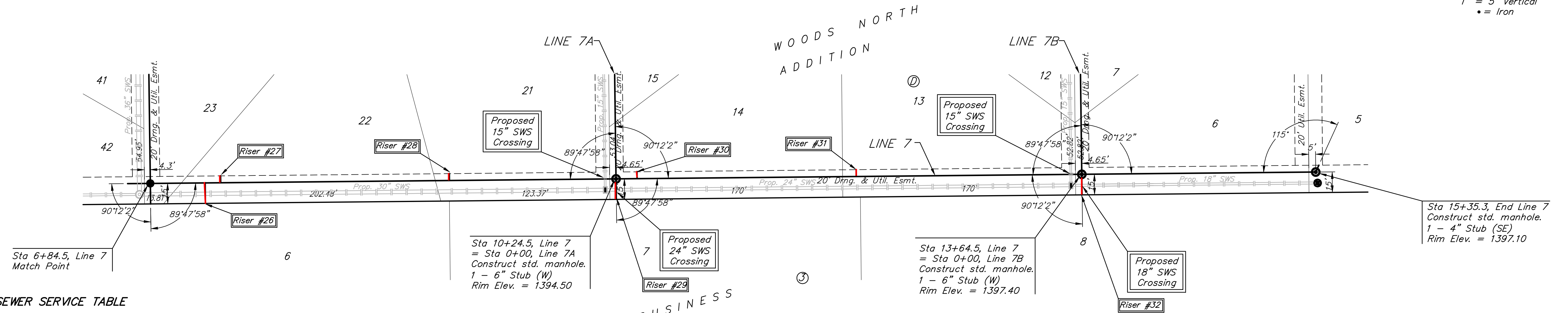


BENCHMARK:
 CROSS CUT ON NORTH
 END OF WEST HEADWALL
 137.5' SOUTH & 12' WEST
 OF THE INTERSECTION OF
 29TH ST N & 127TH ST E.
 ELEV. = 1382.45 NAVD88

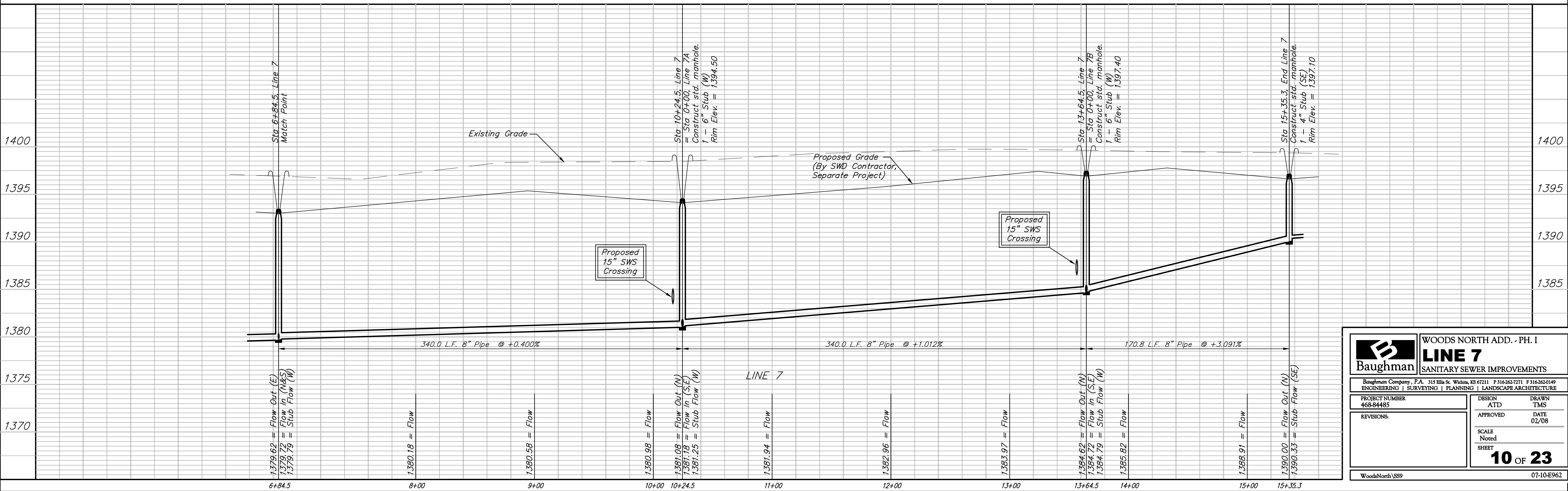
Scale: 1" = 40' Horizontal
 1" = 5' Vertical
 • = Iron



SEWER SERVICE TABLE

NUMBER	TYPE	LOCATION			FOR INFORMATION ONLY		DISTANCE FROM		
		LOT NO.	BLOCK NO.	LINE NO.	STATION \ DIRECTION	APPROXIMATE LENGTH 4" PIPE		UPSTREAM MH	DOWNSTREAM MH
						VERTICAL	HORIZONTAL		
26	8" X 6" Tee	6*	3	7	7+25/Rt.	9.5'	15'	299.5'	40.5'
27	8" X 4" Tee	22	D	7	7+36/Lt.	9.5'	5'	288.5'	51.5'
28	8" X 4" Tee	21	D	7	9+03/Lt.	11.0'	5'	121.5'	218.5'
29	6" Stub	7*	3	7	10+24.5/Rt.	9.0'	15'	0'	340'
30	8" X 4" Tee	14	D	7	10+40/Lt.	9.0'	5'	324.5'	15.5'
31	8" X 4" Tee	13	D	7	12+00/Lt.	9.0'	5'	164.5'	175.5'
32	6" Stub	8*	3	7	13+64.5/Rt.	8.5'	15'	0'	340'

NOTE: Vertical Riser Pipe shall be extended to 2' minimum above ground water elevation and 4' maximum below proposed ground elevation.
 * Greenwich Business Center Addition



Baughman WOODS NORTH ADD. - PH. I
LINE 7
 SANITARY SEWER IMPROVEMENTS

Baughman Company, P.A. 315 Ellis St. Wichita, KS 67211 P 316-262-7271 F 316-262-0149
 ENGINEERING | SURVEYING | PLANNING | LANDSCAPE ARCHITECTURE

PROJECT NUMBER 468-84485	DESIGN ATD	DRAWN TMS
REVISIONS:	APPROVED	DATE 02/08
	SCALE Noted	SHEET 10 OF 23

WoodsNorth/SS9 07-10-E962