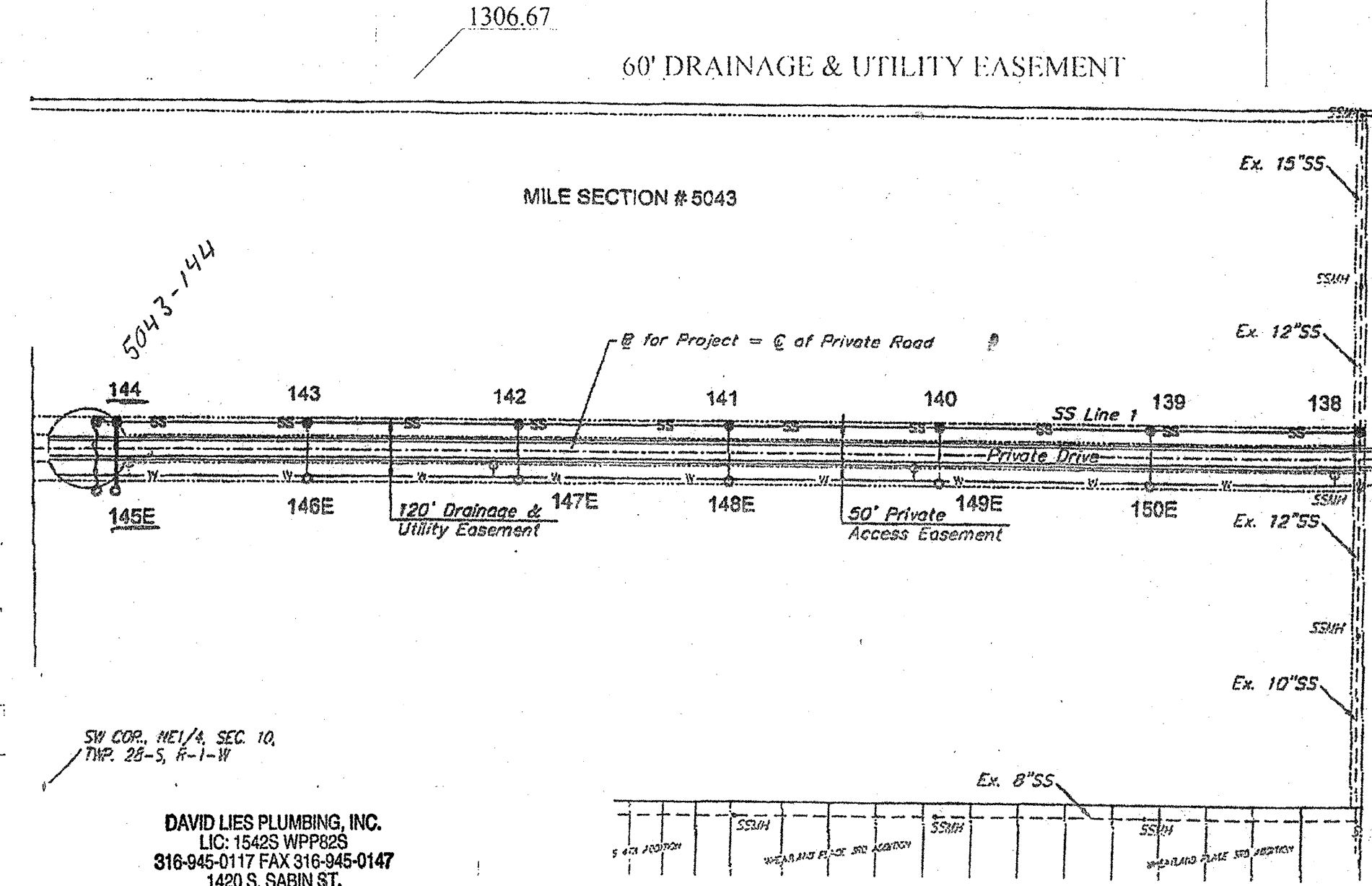
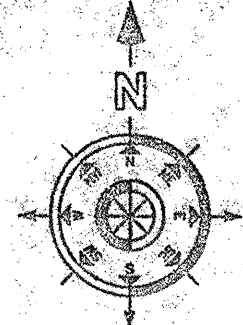


SITE PLAN
1"=40'-0"



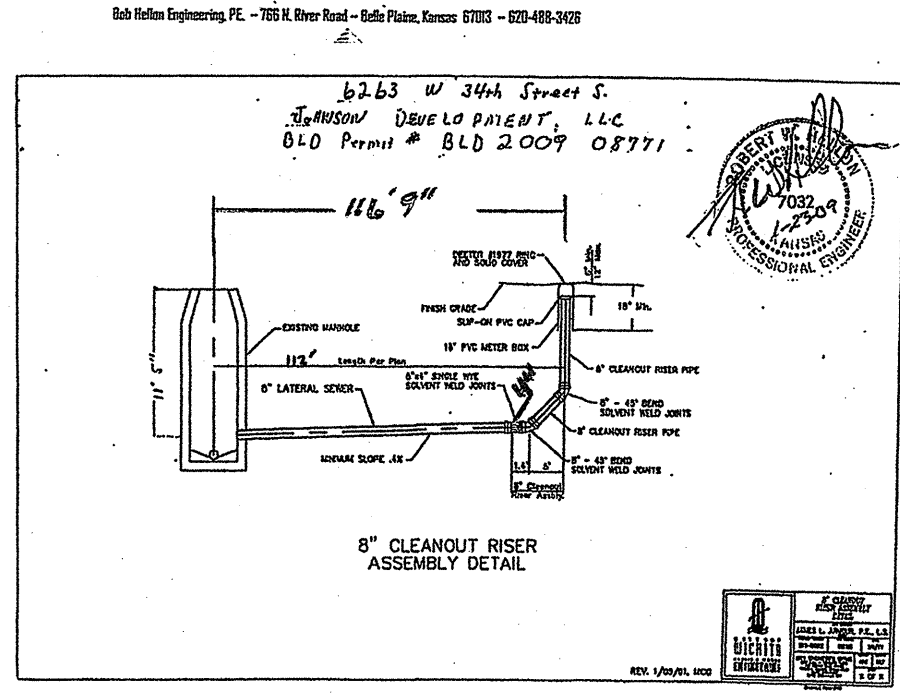
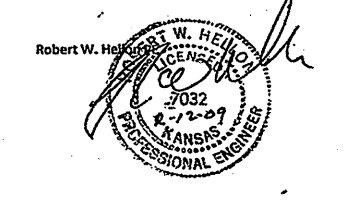
DAVID LIES PLUMBING, INC.
LIC: 15425 WPP828
316-945-0117 FAX 316-945-0147
1420 S. SABIN ST.
WICHITA, KS 67208-4008

INSPECTED BY:
BOB HELLON, ENGINEERING, PE
KEITH JOHNSON, CITY OF WICHITA INSPECTOR

PARCEL "D"

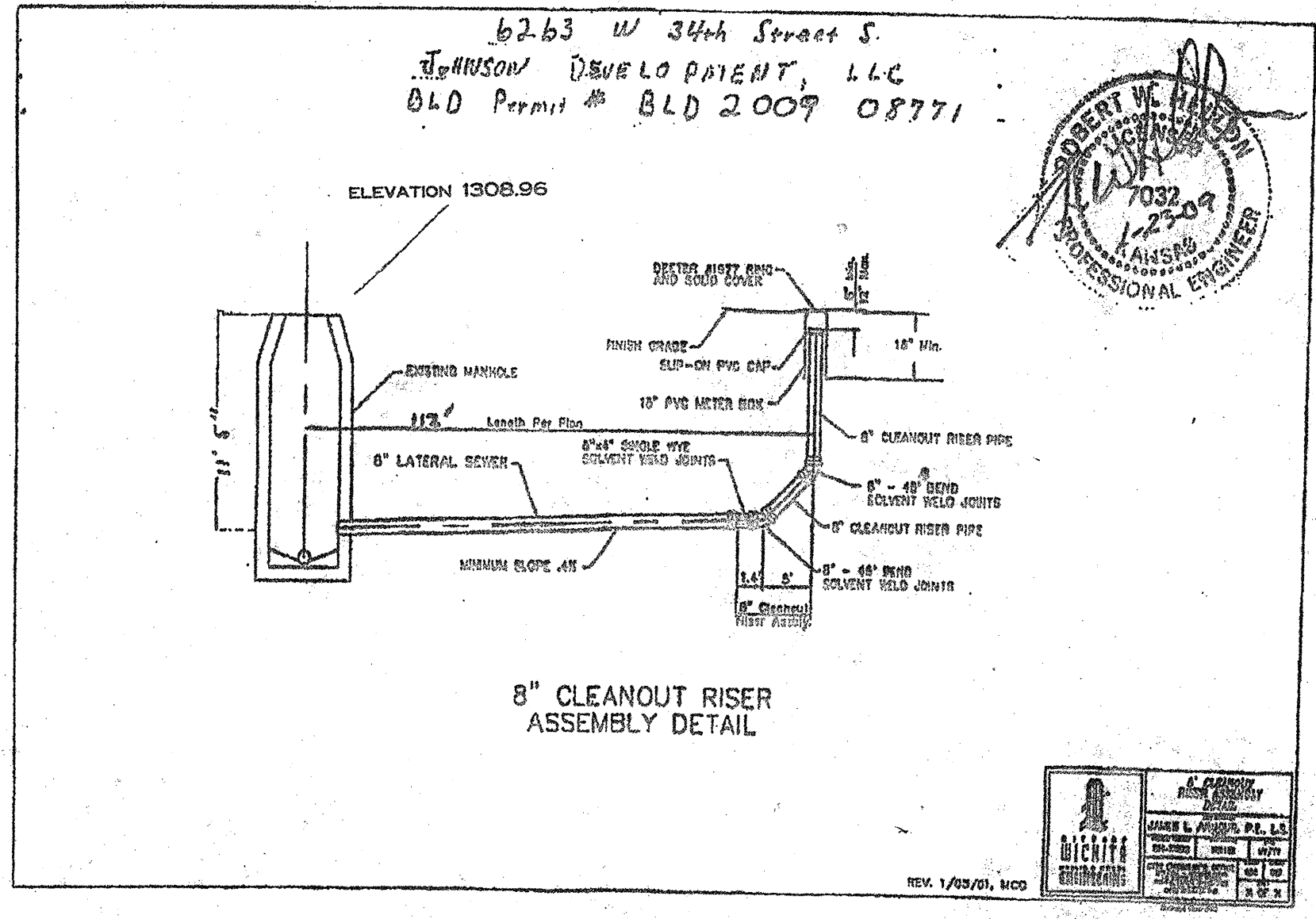
THAT PART OF LOT 1, BLOCK A, ECCO INDUSTRIAL 2ND ADDITION, WICHITA, SEDGWICK COUNTY, KANSAS DESCRIBED AS FOLLOWS: BEGINNING AT THE SW CORNER OF SAID LOT 1, THENCE NORTH 130° 30' W ALONG THE WEST LINE OF SAID LOT 1, 660.06' TO THE INTERSECTION OF SAID WEST LINE WITH THE CENTERLINE OF A 120' DRAINAGE AND UTILITY EASEMENT AS GRANTED IN SAID ECCO INDUSTRIAL 2ND ADDITION; THENCE S89° 50' 00" E ALONG THE CENTERLINE OF SAID 120' DRAINAGE AND UTILITY EASEMENT, 659.95'; THENCE S00° 13' 30" E PARALLEL WITH THE WEST LINE OF SAID LOT 1, 660.06' FEET TO A POINT ON THE SOUTH LINE OF SAID LOT 1, THENCE S89° 59' 45" W ALONG THE SOUTH LINE OF SAID LOT 1, 659.95' FEET TO THE POINT OF BEGINNING.
CONTAINING 435,600.251 SQ. FT. OR 10,000 ACRES, MORE OR LESS.

February 12, 2009
To: Whom it may concern:
Re: 8" Cleanout Riser Assembly Inspection, 6263 W. 34th St., Building Permit No. BLD-2009-08771



AS BUILT PLANS
CONTRACTOR: BOB BARNES
INSPECTOR: BOB HELLON, BOB HILLON
ENGINEERING
PDF BY: bh FEBRUARY 17, 2009

Date Released: 02/17/2009
apr



SANITARY SEWER IMPROVEMENTS
TO SERVE:
JOHNSON DEVELOPMENT, LLC
PARCEL D OF LOT 1, BLOCK A
PRIVATE PROJECT NUMBER:
1953 PPS (607861)
CITY OF WICHITA, KANSAS
JAMES ARMOUR, P.E., CITY ENGINEER
JANUARY, 2009

APPROVED AS NOTED
BY CITY ENGINEER OF WICHITA
Sanitary Sewer Inspection Follow-up 1-27-09
NOTE TO CONTRACTORS
Installation, inspection and testing for this project is to be provided by a Licensed Consulting Engineering firm under contract with the Owner/Developer. Said inspection to be in accordance with the City of Wichita standard construction engineering practices and certified by a Licensed Professional Engineer. No work shall be performed in dedicated easements or public right-of-way by the Contractor without such inspection nor shall any work be commenced without written authorization by the City Engineer. All Construction and Materials shall comply with the City of Wichita Specifications and Standards (as file and available in the City Engineer's Office).

WOLF & ASSOCIATES
ARCHITECTURE
12225 DOVE HILL CT.
DERBY, KANSAS 67037
TEL 1-316-7781110 CELL 1-316-305-6911

WILLIAM E. WOLF
REGISTERED ARCHITECT
KANSAS LICENSE NO. 2991

EVANS
EVANS BUILDING CO., INC.
9801 W. YORK
WICHITA, KANSAS 67277

A NEW BUILDING FOR
JOHNSON DEVELOPMENT, LLC
WICHITA, KS.
6263 W 34th Street S

PROPERTY
EVANS BUILDING COMPANY, INC.
UNWARRANTED TO REBUILD

Wichita City House No. 28
Sedgwick Co. License No. 00209

NO.	REVISIONS	DATE	BY
1		12/12/08	EL

DATE :	11/24/08
DR. BY :	EL
CK. BY :	
PROJECT NO.	08-130
SHEET	SA1