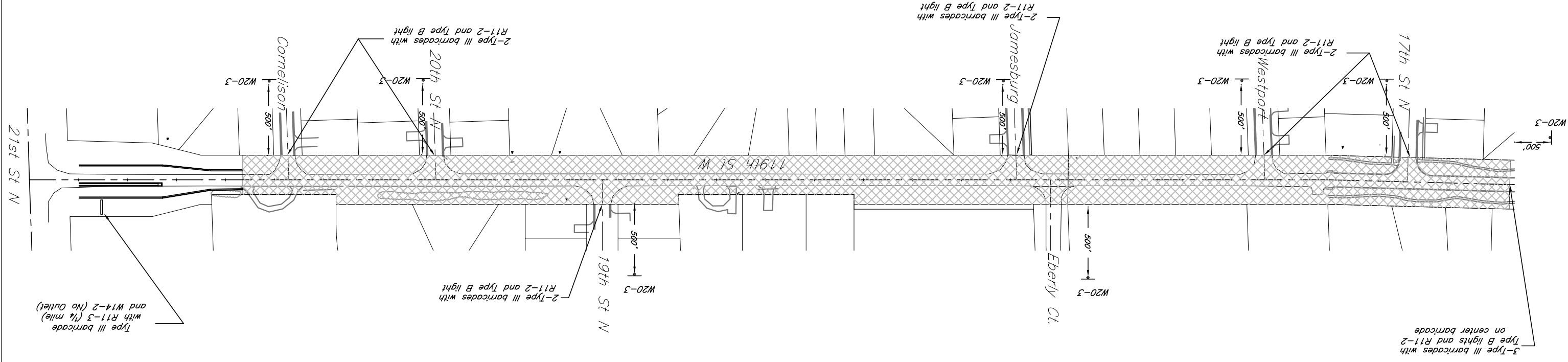
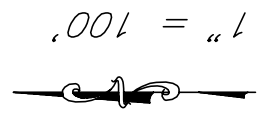
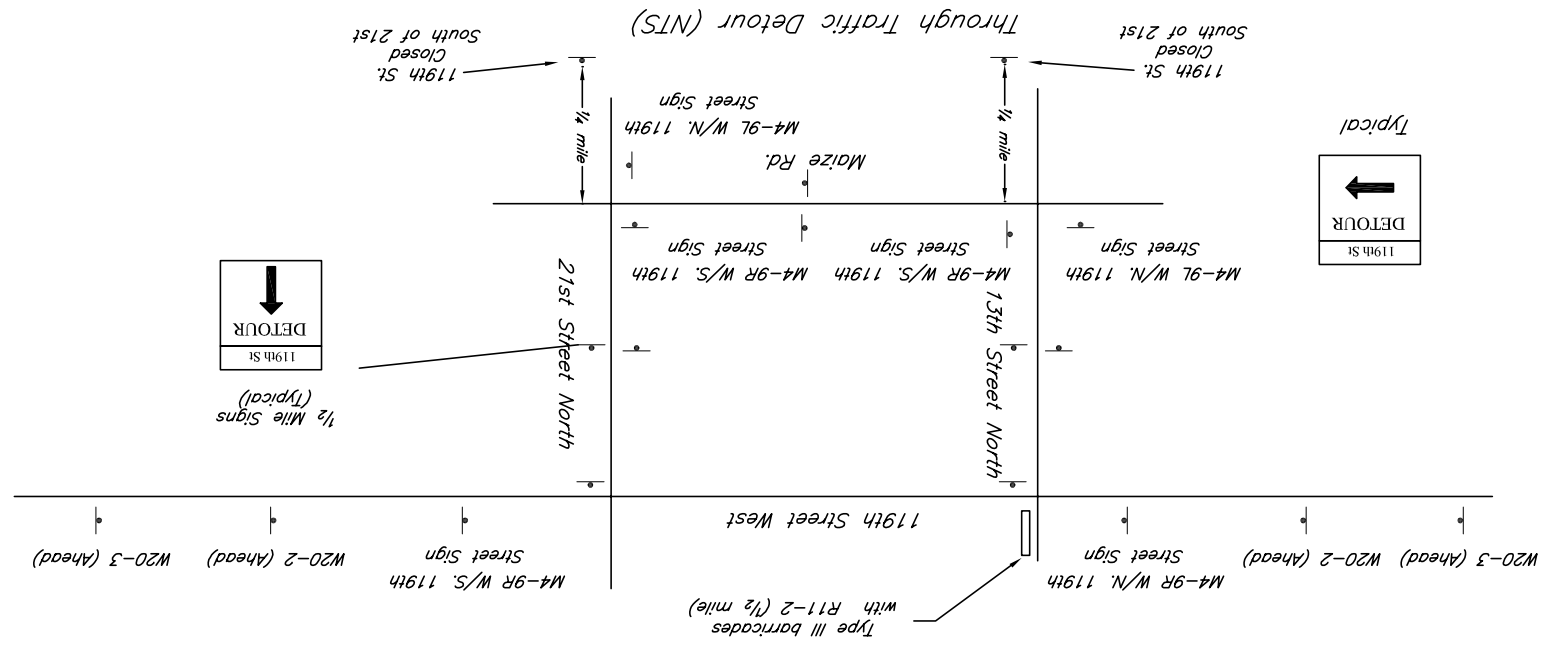


FHWA REG. NO.	7	KANSAS	87 N-0301-01	2003	16	36
PROJECT NO.				YEAR	SHEET NO.	SHEETS TOTAL



*Note: Contractor to maintain access to houses that front 119th St. and to Eberly Ct.*



PROJECT NUMBER 472 83890		DESIGN RR 316/264-0242		DATE 6/01		SHEET NO. 16		SHEET TOTAL 36	
City of Wichita		516 S. Market, Wichita, KS 67202		KEM NO. 01002		DRAWN RR		REVISIONS	
19th Street West		Kern Miller Engineering		FILE Traffic		RR			
Traffic Control Plan									