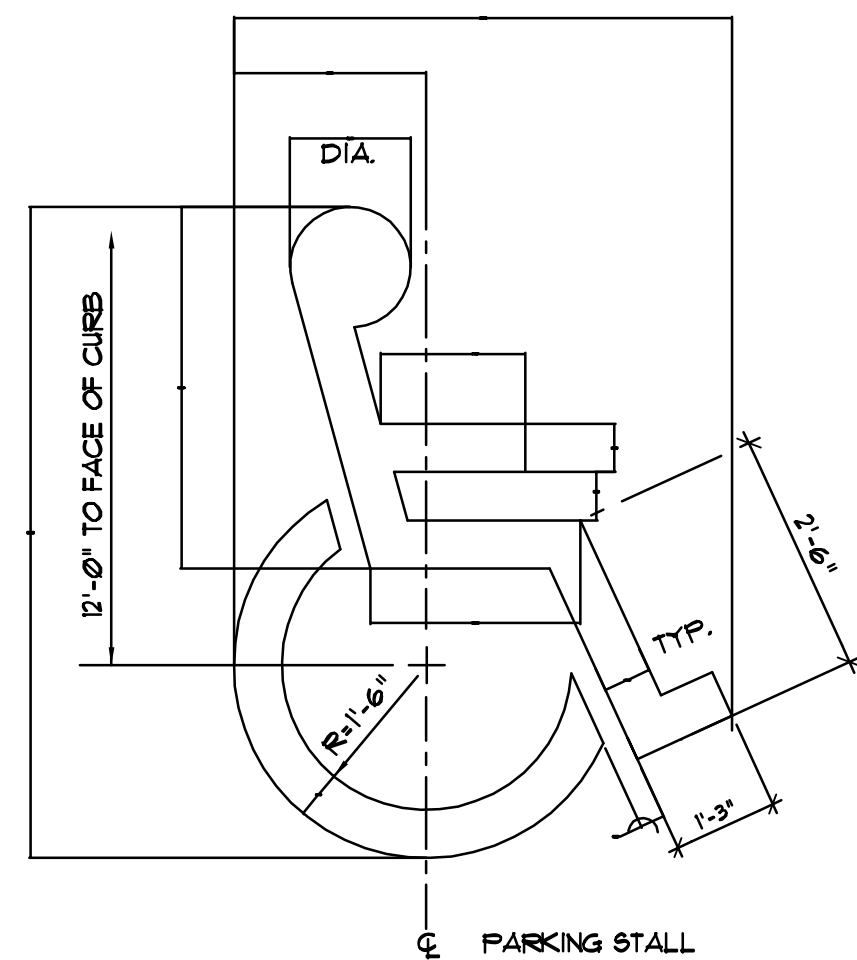
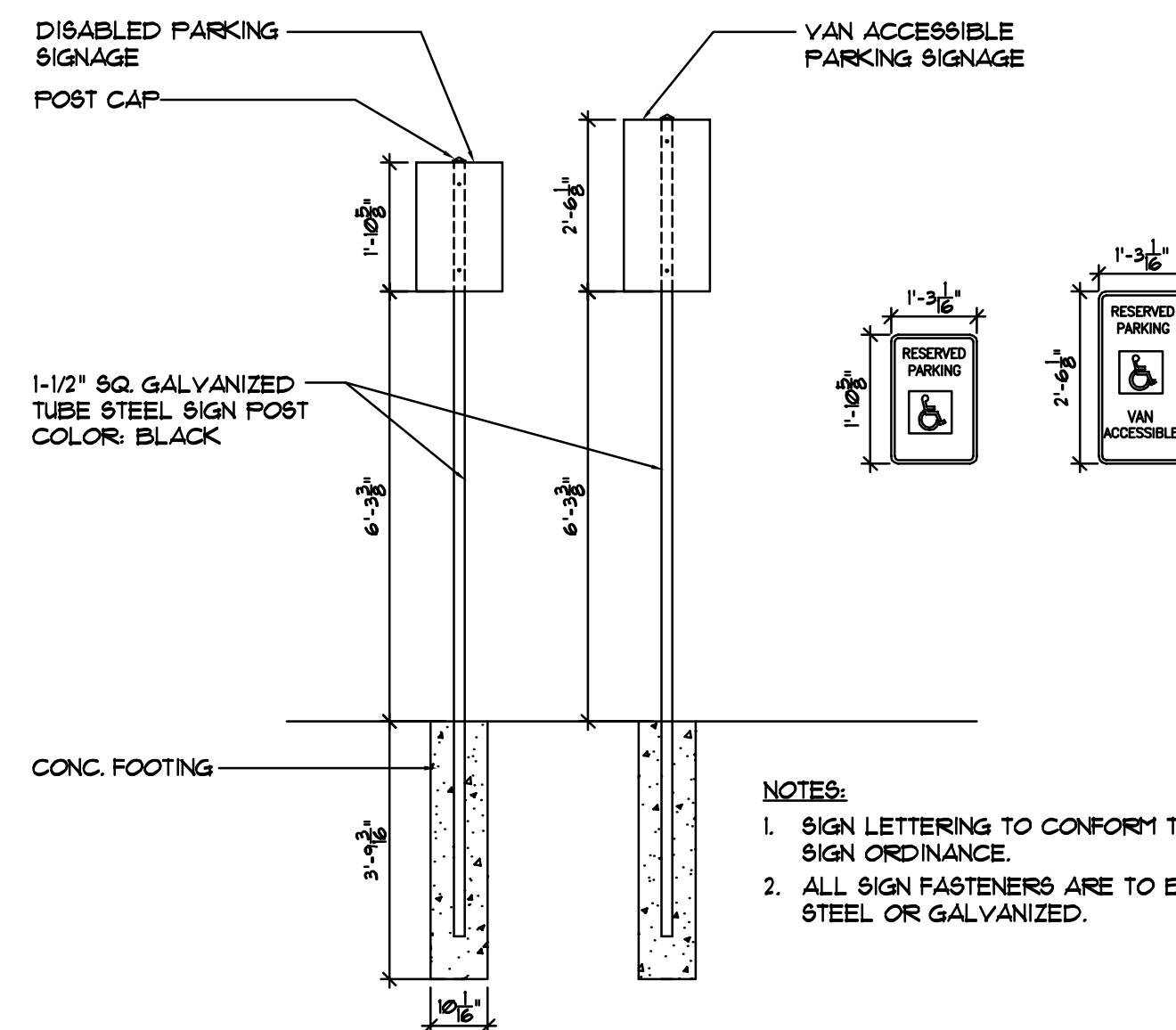


NOTE:
CENTER WHEELSTOP BETWEEN PARKING STRIPES
UNLESS OTHERWISE SPECIFIED ON PLANS.

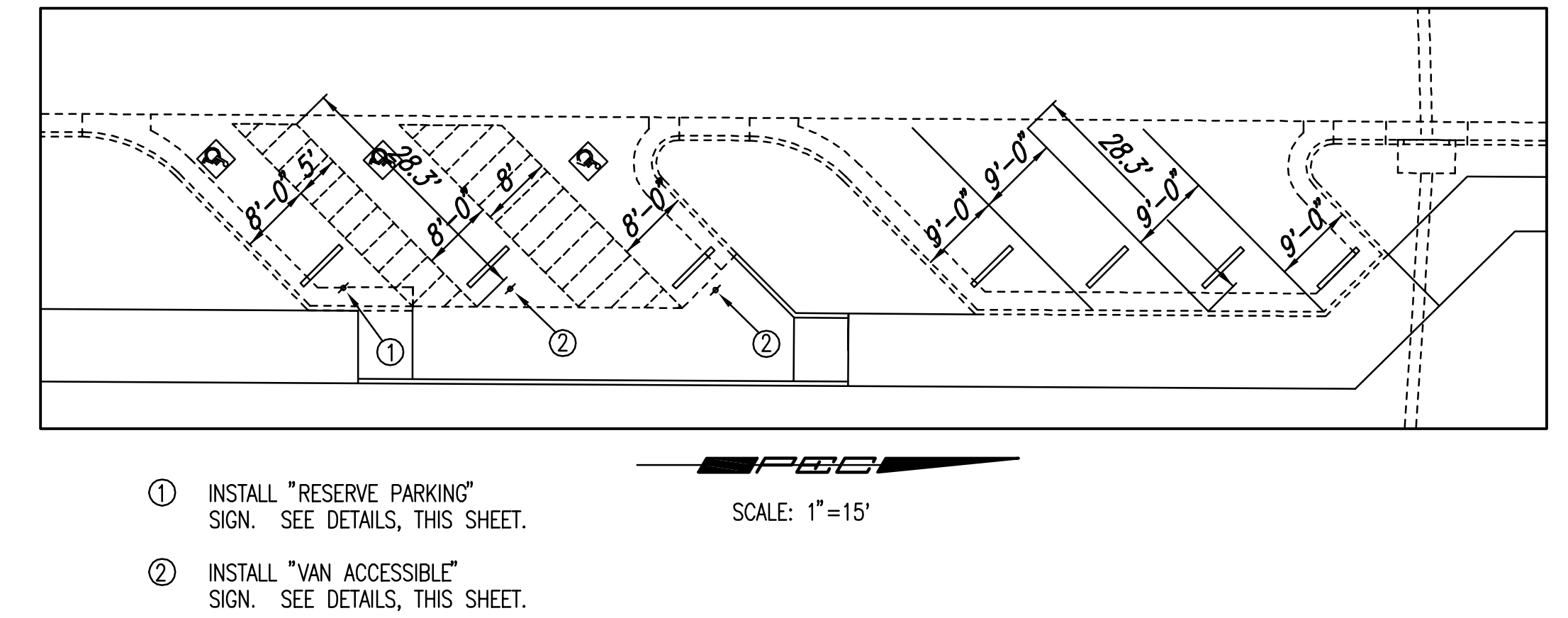
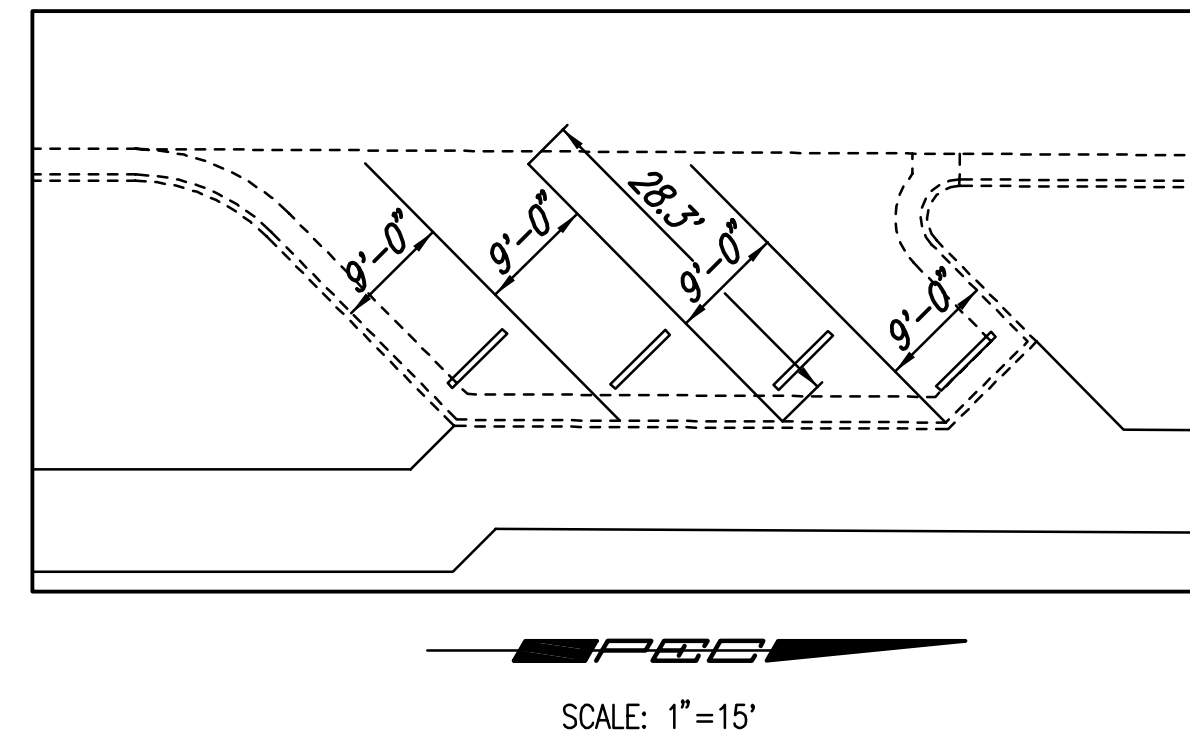
WHEELSTOP



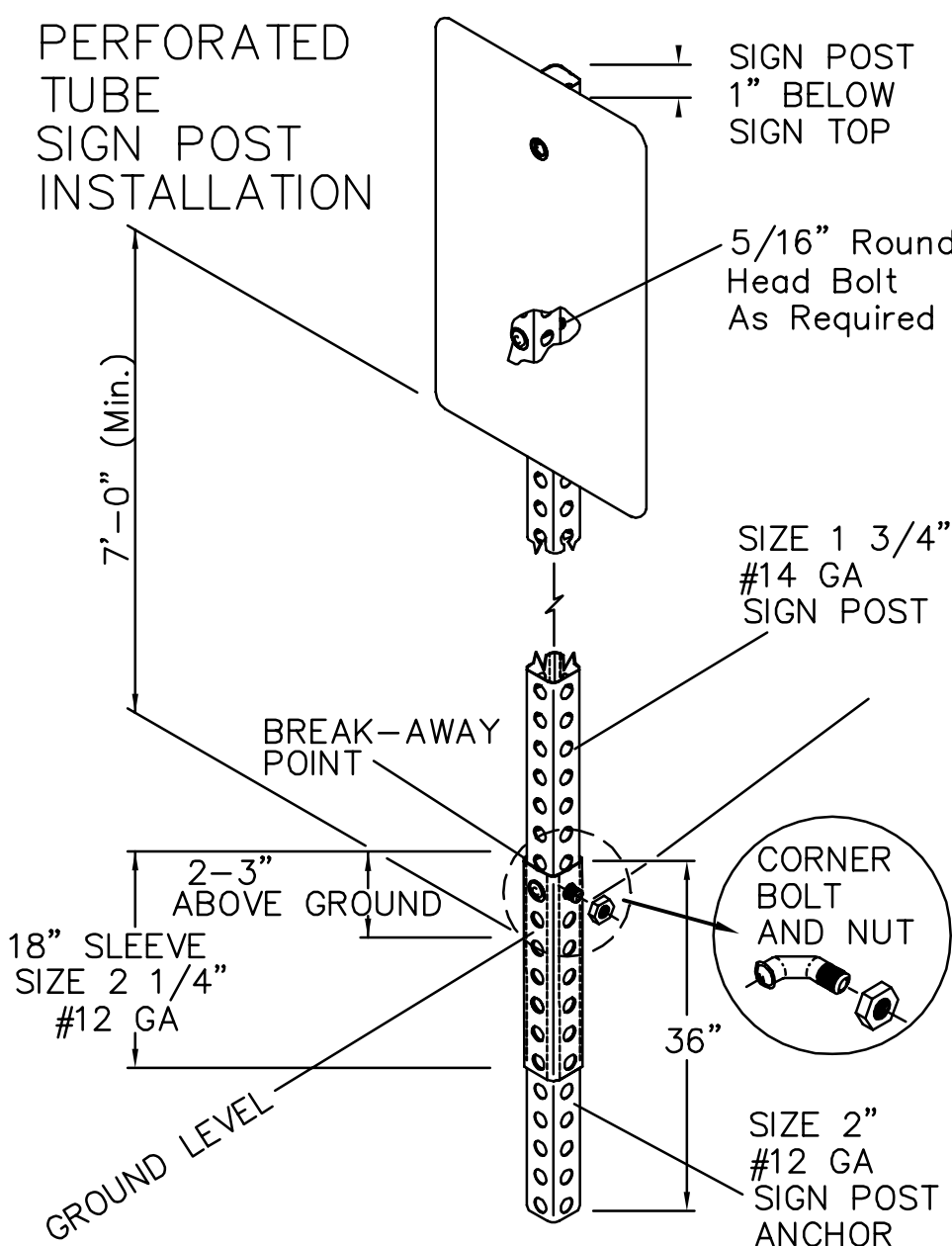
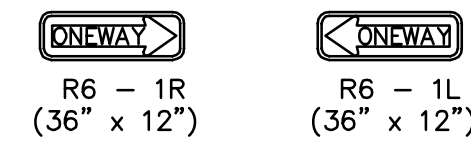
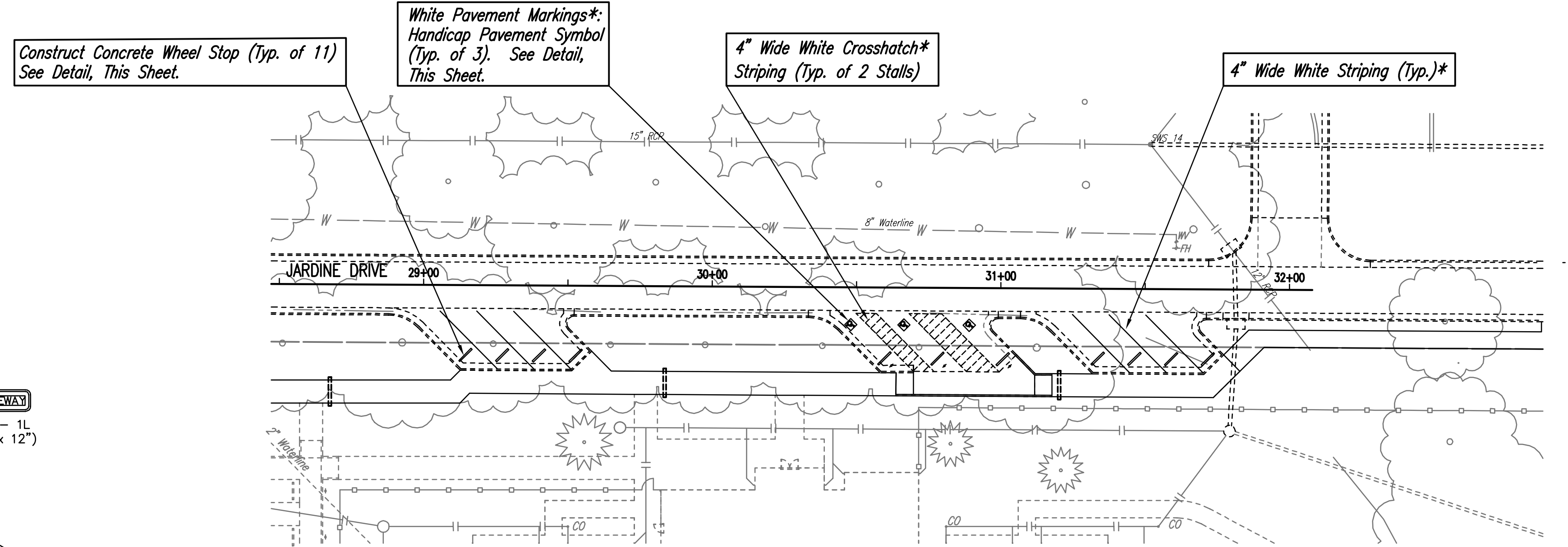
HANDICAP PAVEMENT SYMBOL



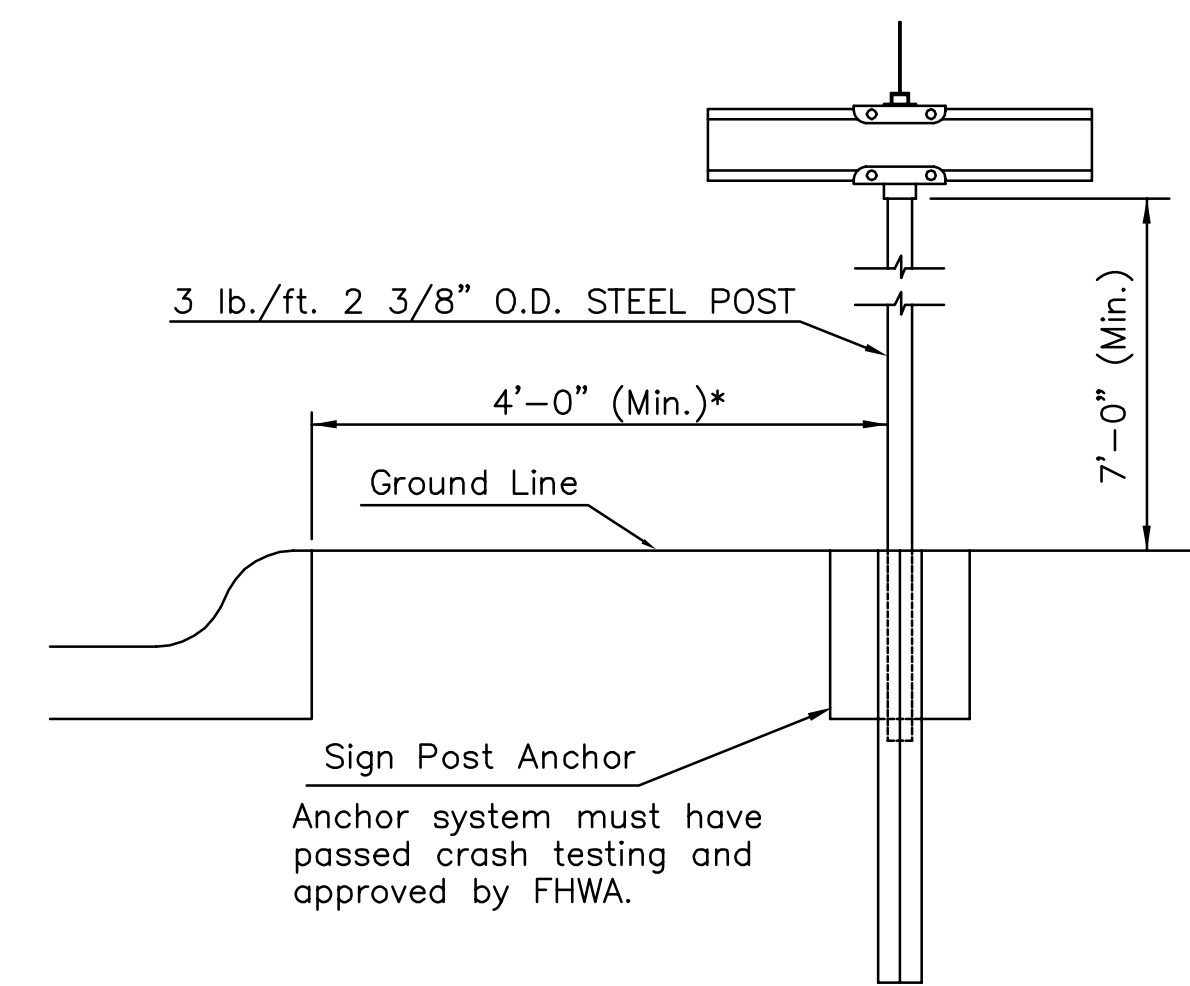
HANDICAP SIGN MOUNTING DETAIL



- ① INSTALL "RESERVE PARKING" SIGN. SEE DETAILS, THIS SHEET.
- ② INSTALL "VAN ACCESSIBLE" SIGN. SEE DETAILS, THIS SHEET.



TYPICAL TRAFFIC CONTROL SIGN MOUNTING INSTALLATION
CURB AND GUTTER SECTION



TYPICAL STREET NAME SIGN MOUNTING INSTALLATION
CURB AND GUTTER SECTION

*** PAVEMENT MARKINGS**
 CLEANING: SWEEP AND CLEAN SURFACE TO ELIMINATE LOOSE MATERIAL AND DUST.
 STRIPING: USE CHLORINATED RUBBER BASE TRAFFIC LANE MARKING PAINT, FACTORY MIXED, QUICK DRYING AND NON-BLEEDING.
 APPLICATION: APPLY PAINT TO PRODUCE UNIFORM STRAIGHT EDGES. APPLY IN 2 COATS AT MANUFACTURER'S RECOMMENDED RATES.

No.	Revision	By	Date
21ST STREET KIDS AND FAMILY EMPOWERMENT JARDINE DRIVE-PHASE 2			
PAVEMENT MARKING PLAN			
JAMES L. ARMOUR, P.E. - CITY ENGINEER CITY OF WICHITA PROJECT NO. 472-84782			
Professional Engineering Consultants, P.A. 303 S. TOPKA • WICHITA, KANSAS 67202 316-262-2691 • FAX 316-262-3003			
Designed by	BDB, BMM	Job No.	35-05416-004
Drawn by	BJS, TAT	Date	October 2005
			Sheet 24 of 32

