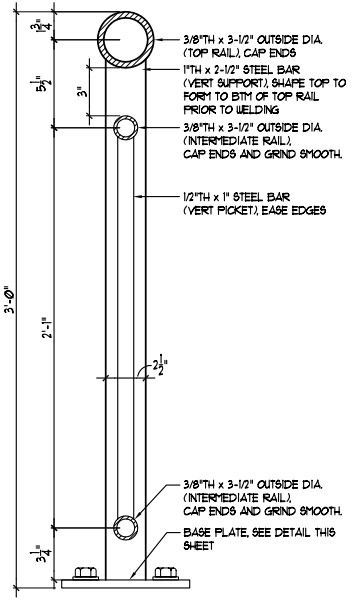
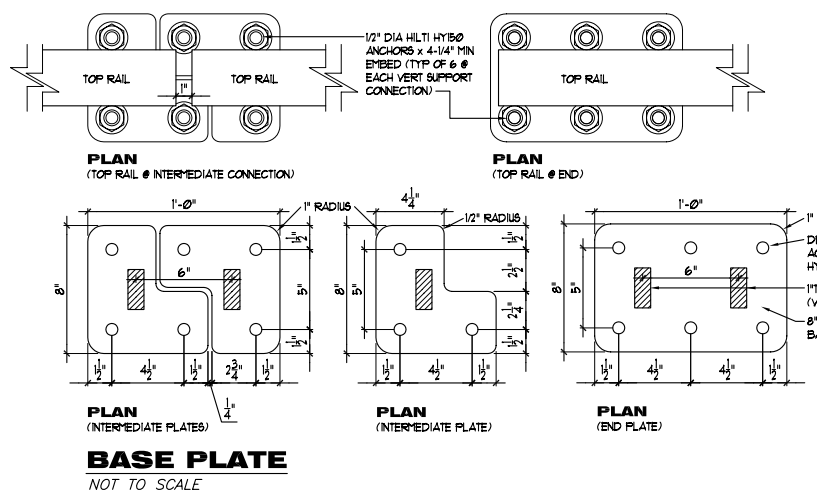


ELEVATION - END ASSEMBLY
GUARDRAIL ASSEMBLY
SCALE 1"=1'-0"

- GENERAL FINISH NOTES**
1. THE IRON FENCE SHALL CONFORM TO ASTM DESIGNATION A36 OR EQUIVALENT.
 2. ALL PARTS OF IRON FENCE SHALL BE PAINTED. THE PRIMER COAT SHALL CONFORM TO THE INORGANIC ZINC SYSTEM. SURFACE PREPARATION SHALL BE IN ACCORDANCE WITH THAT FOR STRUCTURAL STEEL. THE FINISH COAT SHALL BE IN ACCORDANCE WITH WATERBORNE ACRYLIC FINISH COAT. ALL MATERIALS, EQUIPMENT AND LABOR NECESSARY FOR THE INSTALLATION OF THE GUARDRAIL SHALL BE SUBSIDIARY TO THE BID ITEM.
 4. WHERE WELDS MUST BE COMPLETED IN THE FIELD TOUCHUP PAINTING WILL BE REQUIRED. AFTER HANDRAIL IS FULLY ERECTED, CLEAN FIELD WELDS, BOLTED CONNECTIONS, AND ABRASED AREAS OF SHOP PAINT. APPLY PAINT NEATLY BY BRUSH OR SPRAY USING THE SAME MATERIAL AS USED FOR SHOP PAINTING.
 5. ALL FIELD WELDS SHALL BE GRINDED AND BE COMPLETED BY AN AWS CERTIFIED WELDER.
 6. THE COLOR OF THE PAINT SHALL BE TENEK - RED CLAY (END), SEMI-GLOSS, OR CARBOLINE - TLE RED (0516).
 7. SAMPLE MOCK-UP SECTION REQUIRED PRIOR TO FINAL PRODUCT.



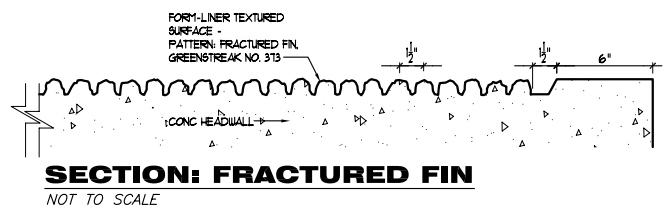
SECTION
NOT TO SCALE



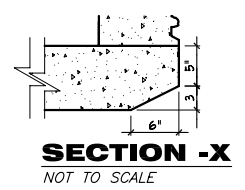
BASE PLATE
NOT TO SCALE

GENERAL NOTES

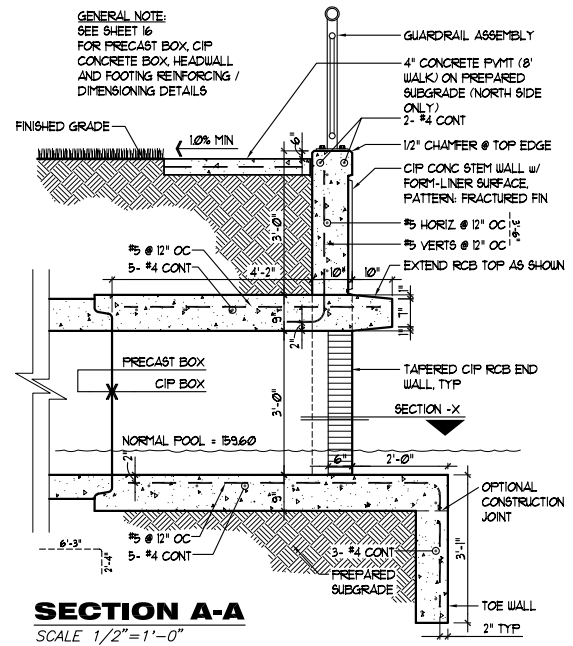
- 1) CONCRETE SHALL HAVE A MINIMUM COMPRESSIVE STRENGTH OF 4000 PSI AT 28 DAYS. CONTRACTOR SHALL SUBMIT CONCRETE MIX DESIGN TO ENGINEER FOR APPROVAL PRIOR TO CONSTRUCTION.
- 2) CONCRETE SHALL CONFORM TO THE CURRENT "ACI MANUAL OF CONCRETE PRACTICE".
- 3) CONCRETE COVER SHALL BE 3" IN BOTTOM OF FOOTING CAST AGAINST SOIL. ALL OTHER COVER SHALL BE 2".
- 4) PORTLAND CEMENT SHALL CONFORM TO ASTM C-150, TYPE 1 OR III.
- 5) TEXTURED CONCRETE SURFACE SHALL BE PROVIDED ON FACES OF HEADWALL STRUCTURE. TEXTURE SHALL BE FORMED WITH GREENSTREAK NO. 313 FRACTURED FIN FORM LINER PATTERN OR EQUAL AS SHOWN IN SECTION DETAIL THIS SHEET. PATTERN SHALL HAVE A 6" BORDER ALONG THE TOP AND SIDES AS SHOWN. THE TEXTURED CONCRETE SURFACE SHALL BE FLUSH OR SLIGHTLY RECESSED BEHIND THE FACE OF THE PERIMETER SURFACES.
- 6) AGGREGATE FOR NORMAL WEIGHT CONCRETE SHALL MEET ASTM C33.
- 7) REINFORCING SHALL MEET ASTM A615 OR GR 60.
- 8) FOOTINGS SHALL BEAR ON UNDISTURBED EARTH OR ENGINEERED FILL AT ELEVATIONS SHOWN ON DETAILS.
- 9) EARTHWORK SHALL BE CONSIDERED SUBSIDIARY TO HEADWALL CONSTRUCTION.
- 10) PRODUCT MOCK-UPS SHALL BE REQUIRED ON ALL WALL AND STEEL SYSTEMS PRIOR TO COMMENCEMENT OF WORK. WALL AND STEEL SYSTEM MOCK-UPS MAY VARY IN HEIGHT AND LENGTH (TO BE DETERMINED BY LANDSCAPE ARCHITECT).



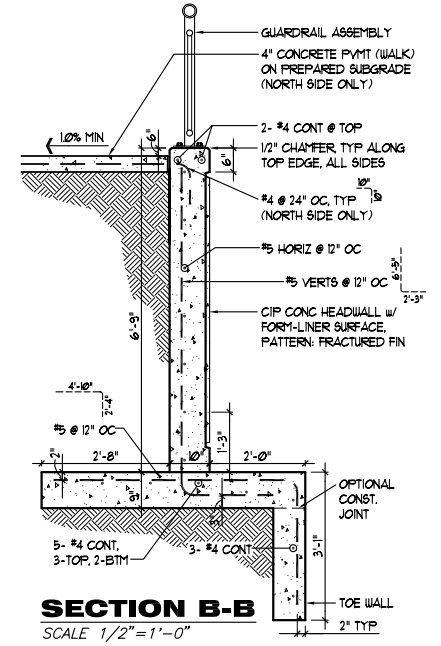
SECTION: FRACTURED FIN
NOT TO SCALE



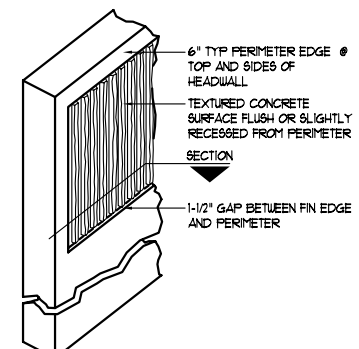
SECTION - X
NOT TO SCALE



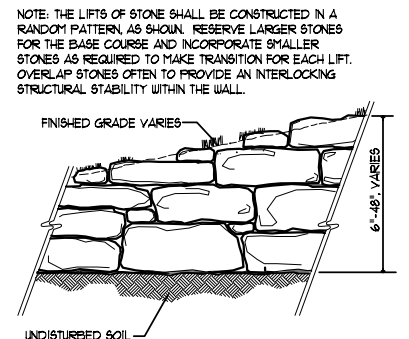
SECTION A-A
SCALE 1/2"=1'-0"



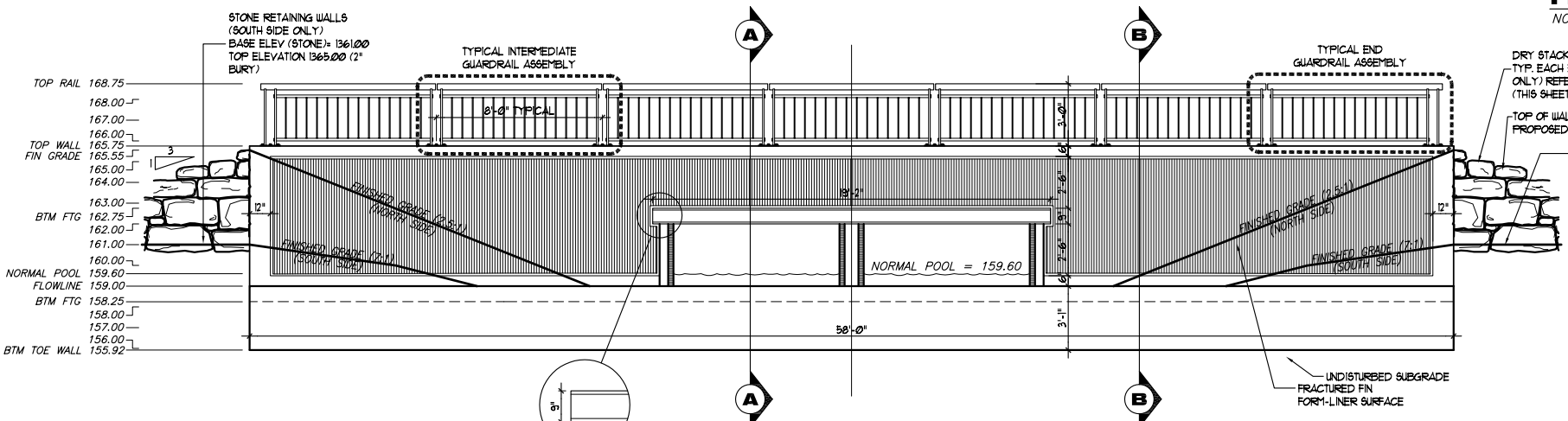
SECTION B-B
SCALE 1/2"=1'-0"



ISOMETRIC - FRACTURED FIN
NOT TO SCALE



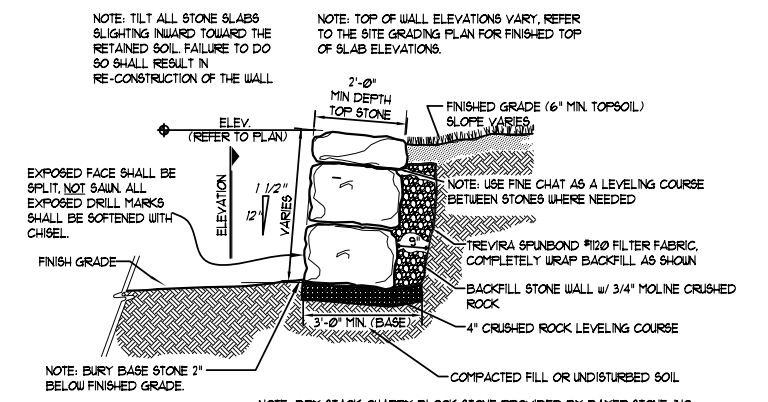
DRYSTACK STONE WALL ELEVATION
NOT TO SCALE



ELEVATION
SCALE 1/4"=1'-0"



BOX EXTENSION



DRYSTACK STONE WALL SECTION
NOT TO SCALE

- NOTE: TILT ALL STONE SLABS SLIGHTLY INWARD TOWARD THE RETAINED SOIL. FAILURE TO DO SO SHALL RESULT IN RE-CONSTRUCTION OF THE WALL.
- NOTE: TOP OF WALL ELEVATIONS VARY. REFER TO THE SITE GRADING PLAN FOR FINISHED TOP OF SLAB ELEVATIONS.
- NOTE: USE FINE CHAT AS A LEVELING COURSE BETWEEN STONES WHERE NEEDED.
- NOTE: DRY STACK QUARRY BLOCK STONE PROVIDED BY BAYER STONE, INC. - SITE: CHASE COUNTY, KS QUARRY TYPE: TOP LEDGE COTTONWOOD LIMESTONE SIZE: RANDOM SPLIT STONE, LEDGE HEIGHTS 9" AND 18" MIX: 60% MACHINE SPLIT, 30% QUARRY SPLIT LENGTH: 18" TO 42" DEPTH: 24" MINIMUM RESERVE LARGER STONES FOR BASE COURSES. COORDINATE PLACEMENT WITH LANDSCAPE ARCHITECT

PAVING AND INCIDENTAL DRAINAGE PLANS
FOX RIDGE ADDITION
CONNECTOR PHASE - PART 2

HEADWALL PLAN, ELEVATION AND DETAILS
SHEET TITLE
472-84421
PROJECT NUMBER

DESIGN BY: DFL
DRAWN BY: DMU
CHECKED BY: GJA

ISSUED: September 2006