

**PAVING AND INCIDENTAL DRAINAGE PLANS
FOX RIDGE ADDITION
CONNECTOR PHASE - PART 2**

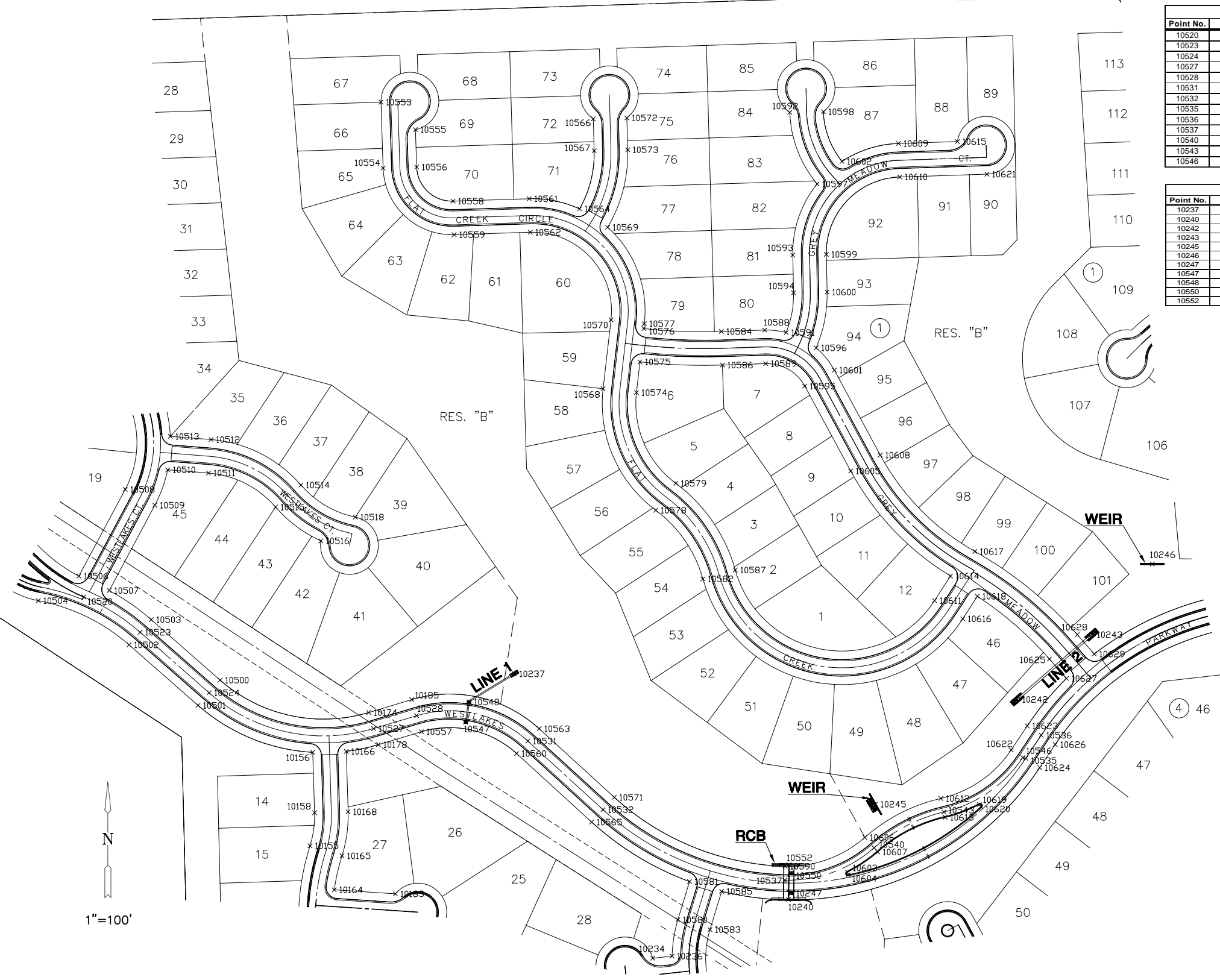
BUBBLE MAP
SHEET TITLE
472-84421
PROJECT NUMBER

DESIGN BY *DFL*
DRAWN BY *KKL*
CHECKED BY *GJA*

ISSUED
September 2006
REVISED

SHEET NO.
30 of 31

Center, Sec. 32,
T26S, R1W, 6th P.M.



Paving Points			
Point No.	Northing	Easting	Description
10520	1705684.767	1613535.206	PRC
10523	1705623.712	1613632.662	PT
10524	1705519.126	1613751.780	PC
10527	1705457.242	1614036.007	PT
10528	1705479.530	1614110.218	PC
10531	1705435.626	1614302.658	PT
10532	1705317.112	1614432.357	PC
10535	1705405.803	1615162.852	PT
10536	1705445.800	1615189.562	PC
10537	1705195.323	1614746.590	PC
10540	1705251.191	1614900.728	PRC
10543	1705313.139	1615021.494	PRC
10546	1705407.068	1615157.684	PT

SWS Points			
Point No.	Northing	Easting	Description
10237	1705552.037	1614279.110	ES
10240	1705162.020	1614753.005	RCB
10242	1705507.628	1615148.073	Es
10243	1705619.550	1615277.149	Es
10245	1705326.620	1614903.149	Weir
10246	1705741.588	1615381.494	Weir
10247	1705172.624	1614757.712	Inlet
10547	1705468.206	1614195.402	Inlet
10548	1705503.130	1614200.761	Inlet
10550	1705207.980	1614758.120	Inlet
10552	1705222.016	1614753.697	RCB

Plat Points			
Point No.	Northing	Easting	Description
10155	1705254.858	1613926.147	PI
10156	1705416.106	1613930.824	PI
10158	1705311.738	1613934.040	PI
10164	1705178.619	1613967.980	PI
10166	1705237.363	1613981.442	PI
10166	1705417.893	1613988.796	PI
10168	1705313.524	1613992.013	PI
10174	1705485.016	1614027.666	PI
10178	1705429.467	1614044.348	PI
10183	1705171.656	1614073.679	PI
10185	1705507.304	1614101.877	PI
10234	1705060.352	1614518.441	PI
10236	1705064.002	1614551.781	PI
10238	1705540.918	1613770.914	PI
10501	1705497.334	1613732.646	PI
10502	1705601.919	1613613.529	PI
10503	1705645.504	1613651.796	PI
10504	1705678.268	1613456.712	PI
10506	1705720.742	1613526.764	PI
10507	1705695.845	1613579.223	PI
10508	1705870.581	1613606.922	PI
10509	1705843.222	1613558.084	PI
10510	1705904.462	1613680.312	PI
10511	1705898.912	1613750.646	PI
10512	1705956.733	1613755.209	PI
10513	1705962.283	1613684.875	PI
10514	1705878.044	1613910.573	PI
10515	1705940.164	1613966.681	PI
10516	1705781.553	1613944.905	PI
10518	1705822.695	1614004.518	PI
10519	1705839.836	1614048.813	PI
10524	1706425.895	1614052.466	PI
10555	1706492.364	1614108.365	PI
10557	1706427.336	1614110.436	PI
10557	1705451.755	1614118.560	PI
10558	1706368.739	1614173.360	PI
10559	1705410.769	1614178.218	PI
10560	1705414.218	1614283.096	PI
10561	1706372.955	1614304.878	PI
10562	1706114.985	1614356.737	PI
10563	1705457.034	1614322.220	PI
10564	1706355.428	1614391.894	PI
10565	1705995.703	1614417.205	PI
10566	1706510.953	1614415.581	PI
10567	1706455.854	1614417.138	PI
10568	1706044.573	1614432.548	PI
10569	1706323.608	1614440.479	PI
10570	1706163.543	1614446.207	PI
10571	1705338.520	1614451.919	PI
10572	1706512.591	1614473.558	PI
10573	1706457.491	1614475.114	PI
10574	1706377.957	1614490.169	PI
10575	1706090.851	1614496.242	PI
10576	1706148.474	1614502.858	PI
10577	1706156.927	1614503.828	PI
10578	1705834.529	1614523.624	PI
10579	1705881.113	1614556.178	PI
10580	1705126.779	1614591.729	PI
10581	1705192.814	1614581.896	PI
10582	1705715.889	1614604.978	PI
10583	1705109.838	1614617.200	PI
10584	1706143.472	1614636.920	PI
10585	1705775.874	1614637.367	PI
10586	1706085.502	1614638.778	PI
10587	1705731.336	1614680.883	PI
10588	1706145.873	1614711.775	PI
10589	1706087.903	1614713.634	PI
10590	1705219.314	1614747.236	PI
10591	1706141.787	1614746.860	PI
10592	1706225.036	1614755.128	PI
10593	1706275.594	1614760.273	PI
10594	1706210.329	1614761.641	PI
10595	1706049.115	1614781.112	PI
10596	1706115.262	1614800.611	PI
10597	1706398.473	1614802.333	PI
10598	1706523.283	1614813.121	PI
10599	1706276.809	1614818.261	PI
10600	1706211.545	1614819.628	PI
10601	1706076.684	1614832.141	PI
10602	1706437.458	1614845.369	PI
10603	1705205.162	1614854.550	PI
10604	1705204.464	1614856.144	PI
10605	1705902.403	1614860.375	PI
10606	1705269.196	1614884.860	PI
10607	1705244.064	1614907.009	PI
10608	1705929.972	1614911.404	PI
10609	1706468.457	1614943.174	PI
10610	1706410.487	1614945.033	PI
10611	1705678.426	1615005.331	PI
10612	1705336.531	1615016.127	PI
10613	1705303.880	1615023.618	PI
10614	1705720.885	1615032.812	PI
10615	1706471.716	1615044.785	PI
10616	1705846.912	1615054.023	PI
10617	1705763.391	1615074.977	PI
10618	1705685.876	1615079.241	PI
10619	1705326.120	1615082.556	PI
10620	1705322.085	1615085.442	PI
10621	1706415.328	1615095.974	PI
10622	1705420.396	1615137.726	PI
10623	1705481.905	1615165.445	PI
10624	1705389.698	1615186.969	PI
10625	1705577.496	1615203.766	PI
10626	1705429.695	1615213.679	PI
10627	1705544.005	1615233.140	PI
10628	1705619.688	1615251.889	PI
10629	1705586.205	1615281.256	PI

PLOTTED: Wednesday, September 13, 2006 @ 11:09AM

G:\C:\MILL\BIB18\DWG\PAV\CONN PH PART 2\911BE.DWG