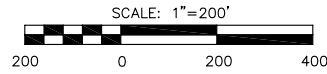


FINAL PLAT

FOX RIDGE ADDITION

AN ADDITION TO WICHITA, SEDGWICK COUNTY, KANSAS

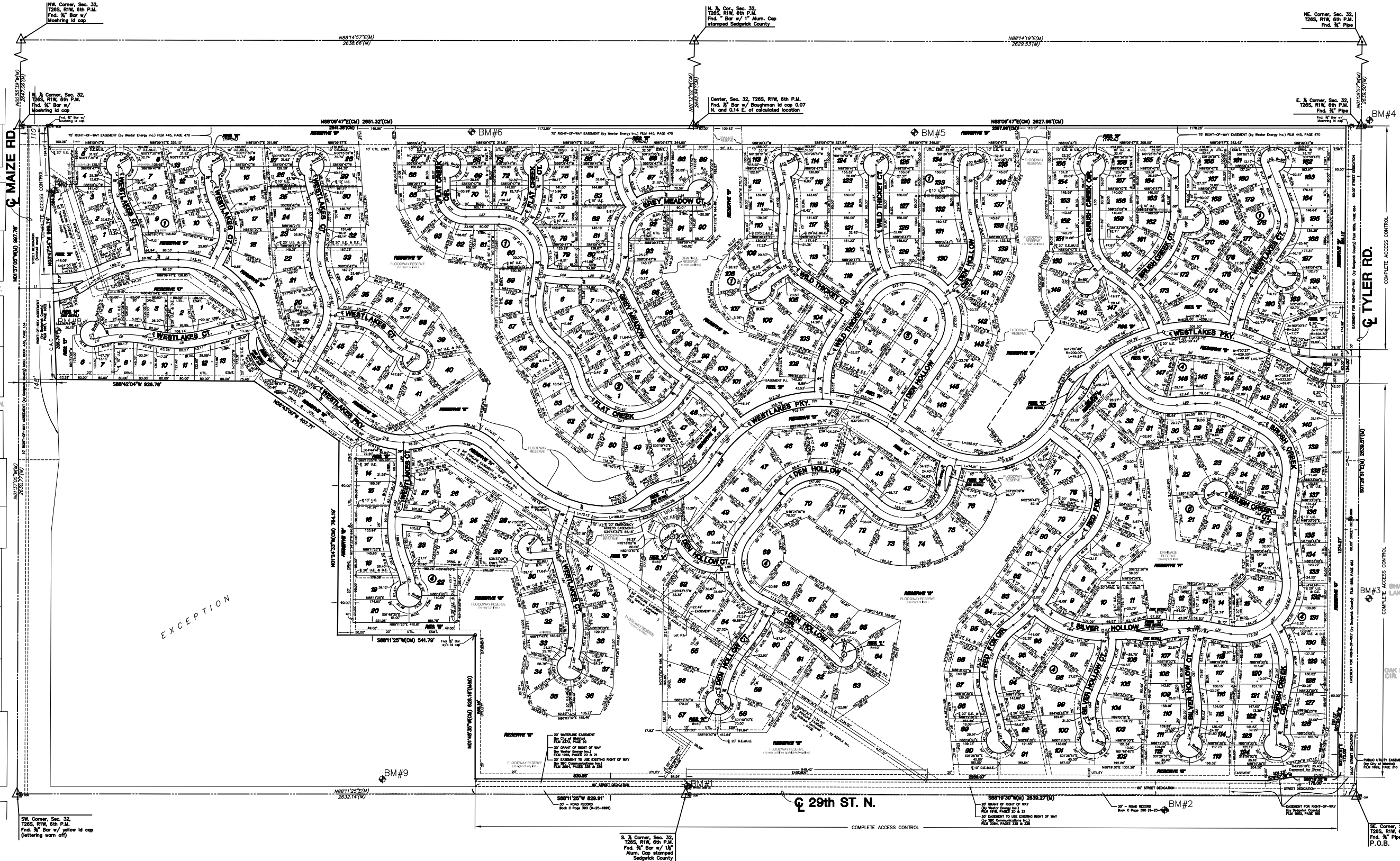


BENCHMARKS

- BM#1 C.O.W. disc 0.5 miles east of Maize Rd. on 29th St. N. 25' +/- N. of centerline of 29th St. Elev. = 160.86
- BM#2 Square cut top of curb N. end of island at Meadow Park, S. Elev. = 168.33
- BM#3 Square cut top curb W. end of island at Shadow Lakes, East side of Tyler Rd. Elev. = 175.81
- BM#4 RR spike in W. face of South H-pole East of Tyler Rd., 3320 N. Tyler Rd. Elev. = 175.53
- BM#5 RR Spike in South face of South H-pole 3rd H-pole West of Tyler Rd. and 1/2 Mile N. of 29th St. N. Elev. = 169.24
- BM#6 RR Spike in South face of South H-pole 6th H-pole West of Tyler Rd. and 1/2 Mile N. of 29th St. N. Elev. = 166.37
- BM#7 PK nail (point numbered 201) in asphalt on bike path 60 feet South of 33rd St. N. on East side of Maize Rd. 28 feet NW. of PP. Elev. = 163.97
- BM#8 RR spike in W. face of PP East side Maize Rd., 100 feet ± S. of Cora St. Elev. = 165.58
- BM#9 RR spike in NW face of PP N. side of 29th St. N., 6th PP West of C.O.W. Disc (Disc 1/2 mile East of Maize Rd.) Elev. = 164.55

LEGEND

- △ = Found Section Corner
- = Found Survey Monument
- = Set 5/8" Rebar w/ MKEC CLS 39 id. cap
- (M) = Measured
- (D) = Deeded
- = Page Match Line



411 N. WEBB ROAD
WICHITA, K.S. 67206
316-684-9600