

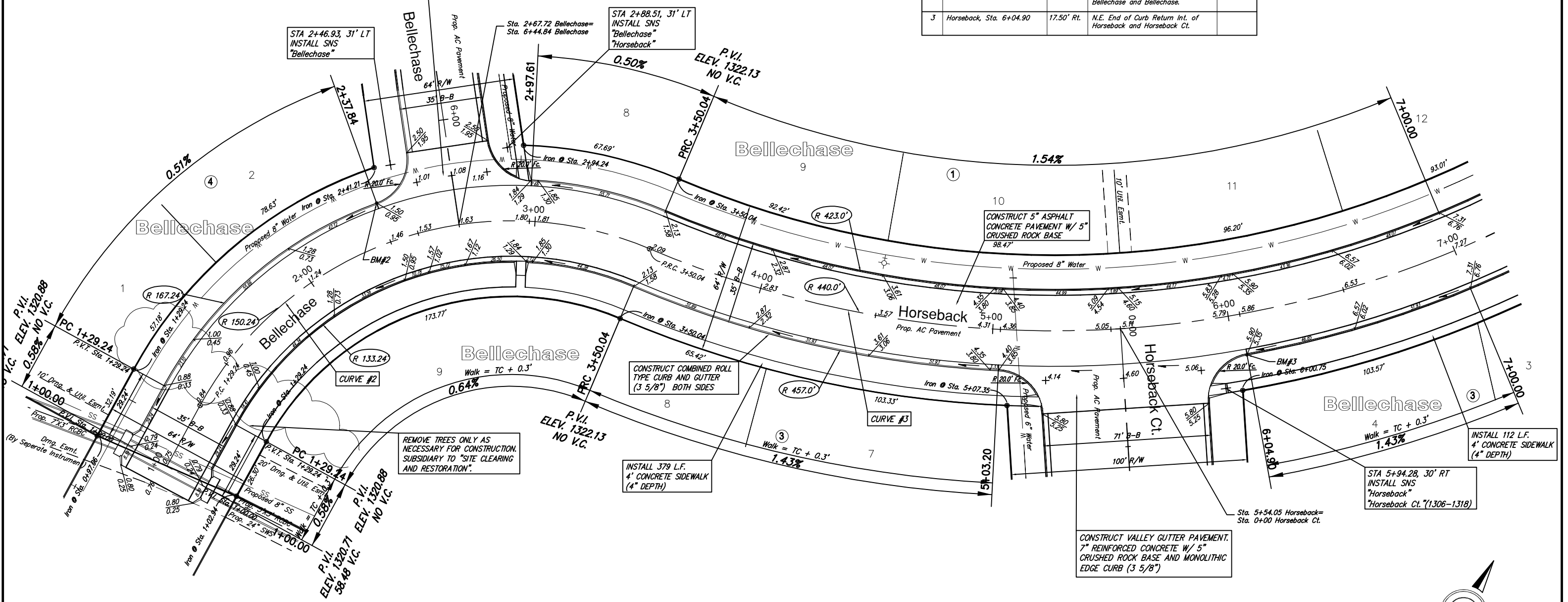
CONSTRUCT VALLEY GUTTER PAVEMENT.
7" REINFORCED CONCRETE W/ 5"
CRUSHED ROCK BASE AND MONOLITHIC
EDGE CURB (3 5/8")

STA 2+46.93, 31' LT
INSTALL SNS
"Bellechase"

STA 2+88.51, 31' LT
INSTALL SNS
"Bellechase"
"Horseback"

Subdivision Bench Marks

No.	Street and Station	From CL	Description	Elevation
2	Bellechase, Sta. 2+37.84	17.50' Lt.	S.E. End of Curb Return Int. of Bellechase and Bellechase.	
3	Horseback, Sta. 6+04.90	17.50' Rt.	N.E. End of Curb Return Int. of Horseback and Horseback Ct.	



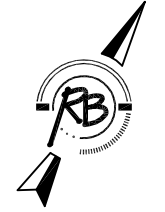
CURVE #2
Curve Data Based on Centerline
Rad. = 150.24' Delta = 84°12'15" Tangent = 135.76'
Arc = 220.80' L.C. = 201.46' Del/Ft. = 11.44078 Min.

Station	FACE CHORD LENGTHS				
	Arc	B Lt.	B Rt.	Defl.	T. Defl.
1+29.24	-	-	-	0°00'00"	0°00'00"
1+50.00	20.76'	24.20'	17.29'	3°57'30"	3°57'30"
1+75.00	25.00'	28.13'	20.82'	4°46'01"	8°43'31"
2+00.00	25.00'	28.13'	20.82'	4°46'01"	13°29'32"
2+25.00	25.00'	28.13'	20.82'	4°46'01"	18°15'33"
2+50.00	25.00'	28.13'	20.82'	4°46'01"	23°01'34"
2+75.00	25.00'	28.13'	20.82'	4°46'01"	27°47'35"
3+00.00	25.00'	28.13'	20.82'	4°46'01"	32°33'36"
3+25.00	25.00'	28.13'	20.82'	4°46'01"	37°19'37"
3+50.04	25.04'	28.17'	20.85'	4°46'28"	42°05'38"

CURVE #3
Curve Data Based on Centerline
Rad. = 440.00' Delta = 55°58'14" Tangent = 233.81'
Arc = 429.82' L.C. = 412.94' Del/Ft. = 3.90656 Min.

Station	FACE CHORD LENGTHS				
	Arc	B Lt.	B Rt.	Defl.	T. Defl.
3+50.04	-	-	-	0°00'00"	0°00'00"
3+75.00	24.96'	23.54'	26.37'	1°37'30"	1°37'30"
4+00.00	25.00'	23.58'	26.42'	1°37'40"	3°15'10"
4+25.00	25.00'	23.58'	26.42'	1°37'40"	4°52'50"
4+50.00	25.00'	23.58'	26.42'	1°37'40"	6°30'30"
4+75.00	25.00'	23.58'	26.42'	1°37'40"	8°08'10"
5+00.00	25.00'	23.58'	26.42'	1°37'40"	9°45'49"
5+25.00	25.00'	23.58'	26.42'	1°37'40"	11°23'29"
5+50.00	25.00'	23.58'	26.42'	1°37'40"	13°01'09"
5+75.00	25.00'	23.58'	26.42'	1°37'40"	14°38'49"
6+00.00	25.00'	23.58'	26.42'	1°37'40"	16°16'29"
6+25.00	25.00'	23.58'	26.42'	1°37'40"	17°54'09"
6+50.00	25.00'	23.58'	26.42'	1°37'40"	19°31'48"
6+75.00	25.00'	23.58'	26.42'	1°37'40"	21°09'28"
7+00.00	25.00'	23.58'	26.42'	1°37'40"	22°47'08"
7+25.00	25.00'	23.58'	26.42'	1°37'40"	24°24'48"
7+50.00	25.00'	23.58'	26.42'	1°37'40"	26°02'28"
7+75.00	25.00'	23.58'	26.42'	1°37'40"	27°40'08"
7+79.87	4.87'	4.59'	5.15'	0°19'01"	27°59'09"

NOTE: ROLL TYPE CURB AND GUTTER TO BE CONSTRUCTED ALONG PAVEMENT DEPICTED ON THIS SHEET



SCALE 1" = 20'
IRON = •

**Bellechase Addition
Horseback
WICHITA, KANSAS**

Ruggles & Bohm, P.A.
Engineering, Surveying, Land Planning

924 North Main
Wichita, Kansas 67203
www.rbkansas.com

(316) 264-8008
(316) 264-4621 fax
E-mail: info@rbkansas.com

DESIGN KWL	7 OF 33
DRAWN MLP	
REVIEW	
UTILITY	
DRAWING FILE paving {BELLEHORSE1}	PROJECT NUMBER 472-84426
DATE Sept. 21, 2008	