

# GENERAL NOTES

CONSTRUCTION OF THIS PROJECT WILL OCCUR SIMULTANEOUSLY WITH THE CONSTRUCTION OF CENTRAL BETWEEN OLIVER AND ROCK. THE CONTRACTOR SHALL COORDINATE CONSTRUCTION ACTIVITIES WITH THE CONTRACTOR FOR THE CENTRAL PROJECT.

UNLESS SHOWN OR STATED OTHERWISE ON THESE DRAWINGS, MATERIALS AND CONSTRUCTION SHALL BE IN ACCORDANCE WITH CITY OF WICHITA CONCRETE PAVEMENT AND ASPHALTIC CONCRETE PAVEMENT SPECIFICATIONS.

CONTRACTOR WILL BE REQUIRED TO PROVIDE A MINIMUM ADVANCE NOTICE OF SEVENTY-TWO (72) HOURS TO UTILITY COMPANIES PRIOR TO STARTING ANY EXCAVATION AS FOLLOWS:

KANSAS ONE-CALL 1-800-344-7233  
OR 687-2470 (LOCAL WICHITA)

THE CONTRACTOR MUST NOTIFY THE FOLLOWING IN CASE OF AN EMERGENCY:

AT&T (TELEPHONE) 800-870-8390  
COX COMMUNICATIONS (CABLE) 262-0661  
WESTAR (ELECTRIC) 383-8600  
KANSAS GAS SERVICE (GAS) 832-3101  
CITY OF WICHITA WATER & SEWER MAINT. 262-6000  
AQUILA (GAS) 946-0096

THE CONTRACTOR SHALL BE RESPONSIBLE FOR PRESERVING PROPERTY IRONS. THE CONTRACTOR WILL BE REQUIRED TO REESTABLISH ANY PROPERTY IRONS WHICH ARE DAMAGED OR DESTROYED BY HIS CONSTRUCTION OPERATIONS. SUCH IRONS SHALL BE REESTABLISHED BY A LICENSED LAND SURVEYOR IN ACCORDANCE WITH STATE LAWS.

EXISTING UTILITIES AND THEIR LOCATIONS, AS SHOWN ON THE PLANS REPRESENT THE BEST INFORMATION OBTAINABLE FOR DESIGN. LOCATION INFORMATION HAS BEEN OBTAINED FROM THE VARIOUS UTILITY COMPANIES AND IS EITHER FROM COMPANY RECORD DRAWINGS OR COMPANY PROVIDED FIELD LOCATIONS. THE PLAN LOCATIONS SHOWN ARE NOT GUARANTEED. ADDITIONAL EXISTING UTILITIES MAY ALSO BE ENCOUNTERED.

RUBBLE FROM THE REMOVAL OF MISCELLANEOUS STRUCTURES AND EXCESS EXCAVATION WHICH IS TO BE WASTED SHALL BE DISPOSED OF ON SITES TO BE PROVIDED BY THE CONTRACTOR. THESE SITES SHALL BE APPROVED BY THE ENGINEER AS TO SUITABILITY, APPEARANCE AND SITE LOCATION. LOCATIONS THAT, IN THE OPINION OF THE ENGINEER, WILL LEAVE AN UNSIGHTLY APPEARANCE WILL NOT BE APPROVED. ALL DISPOSAL SITES MUST BE APPROVED BY THE KANSAS DEPARTMENT OF HEALTH AND ENVIRONMENT. MATERIAL EITHER STOCKPILED OR DISPOSED OF IN A FLOOD PLAIN WOULD REQUIRE A KANSAS STATE BOARD OF AGRICULTURE PERMIT. ANY MATERIAL DUMPED IN WATERS OF THE UNITED STATES OR WETLANDS IS SUBJECT TO U.S. CORPS OF ENGINEERS PERMITTING REGULATIONS. ANY MATERIAL BURIED OR STOCKPILED BEYOND APPROVED CONSTRUCTION LIMITS WOULD REQUIRE ADDITIONAL ARCHAEOLOGICAL INVESTIGATIONS UNLESS BURIED IN A PREVIOUSLY APPROVED BORROW LOCATION.

CONTRACTOR SHALL MAINTAIN VEHICLE ACCESS TO THE COMMERCIAL BUILDING AT 6000 E CENTRAL (KANSAS LIGHTING STORE) DURING CONSTRUCTION.

AREAS DISTURBED BY CONSTRUCTION ARE TO BE RESEED WITH A PERMANENT SEED MIX IN TABLE 902-1 TO MATCH ADJACENT AREAS OR AS DIRECTED BY THE ENGINEER. THE SEED MIXTURE TYPE IS TO MATCH ADJACENT TURF OR AS DIRECTED BY THE ENGINEER. RESTORATION OF DISTURBED AREAS SHALL INCLUDE, BUT NOT TO BE LIMITED TO, TOPSOIL PREPARATION, SEEDING, AND MULCHING. ALL SEEDING WORK SHALL BE IN ACCORDANCE WITH THE CITY OF WICHITA STANDARD SPECIFICATIONS AND CITY OF WICHITA ADMINISTRATIVE REGULATION NO. AR78, WHICH GOVERNS CLEANUP AND RESTORATION OR REPLACEMENT FOLLOWING CONSTRUCTION. THE CONTRACTOR SHALL BE RESPONSIBLE FOR INSTALLING EROSION CONTROL BLANKET (CURLEX 1 OR APPROVED EQUAL) AT THE BACK OF CURB (8' MINIMUM WIDE). ALL COSTS FOR THIS WORK WILL BE SUBSIDIARY TO THE BID ITEM "SITE RESTORATION".

ALL TREES TO BE REMOVED ARE MARKED . COSTS SHALL BE PAID AS CLEARING AND GRUBBING.

CONTRACTOR SHALL REMOVE AND DELIVER TO 1801 S. MCLEAN ALL SEWER MANHOLE FRAME AND LIDS, NOTED FOR REMOVAL DURING CONSTRUCTION. ALL ASSOCIATED COSTS TO TRANSPORT THE SALVAGED MATERIAL WILL BE SUBSIDIARY TO THE BID ITEM "REPLACE FRAME AND LID".

ELEVATIONS ARE IN CITY OF WICHITA DATUM. (FEET)

BITUMINOUS SURFACE COURSE SHALL BE PLACED WITH A LAYDOWN MACHINE HAVING AUTOMATIC CONTROLS FOR LINE AND GRADE.

A TACK COAT OF EMULSIFIED ASPHALT (SC-1H OR CSS-1H) SHALL BE APPLIED AT AN APPROXIMATE RATE OF 0.05 GAL. PER SQUARE YARD BETWEEN EACH LIFT OF BITUMINOUS MATERIAL.

CONSTRUCTION JOINTS IN EACH LIFT SHALL BE STAGGERED A MINIMUM DISTANCE OF 12 INCHES FROM JOINTS IN PRECEDING LIFTS AND PLACED SO THAT A JOINT WILL BE CONSTRUCTED ON THE CENTERLINE OF THE TOP LIFT.

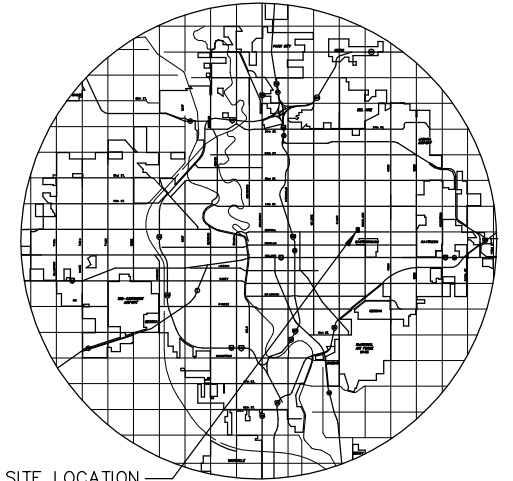
CRUSHED ROCK SUBGRADE IS TO BE COMPACTED AND SMOOTHED WITH A STEEL FACED ROLLER PRIOR TO PLACEMENT OF PAVEMENT. TACK COAT WILL NOT BE APPLIED TO ROCK BASE.

INLET HOOK-UPS SHALL BE CONSTRUCTED AS INDICATED ON THE INLET DETAIL DRAWINGS AND SHALL BE BID AS "INLET HOOK-UP". NO DISTINCTION WILL BE MADE BETWEEN HOOK-UPS BASED ON THE SIZE AND TYPE OF INLET.

# BROOKSIDE PARKWAY PAVING IMPROVEMENTS PROJECT NO. 472-84442

JIM ARMOUR, P.E. - CITY ENGINEER

O.C.A. NO. 766112

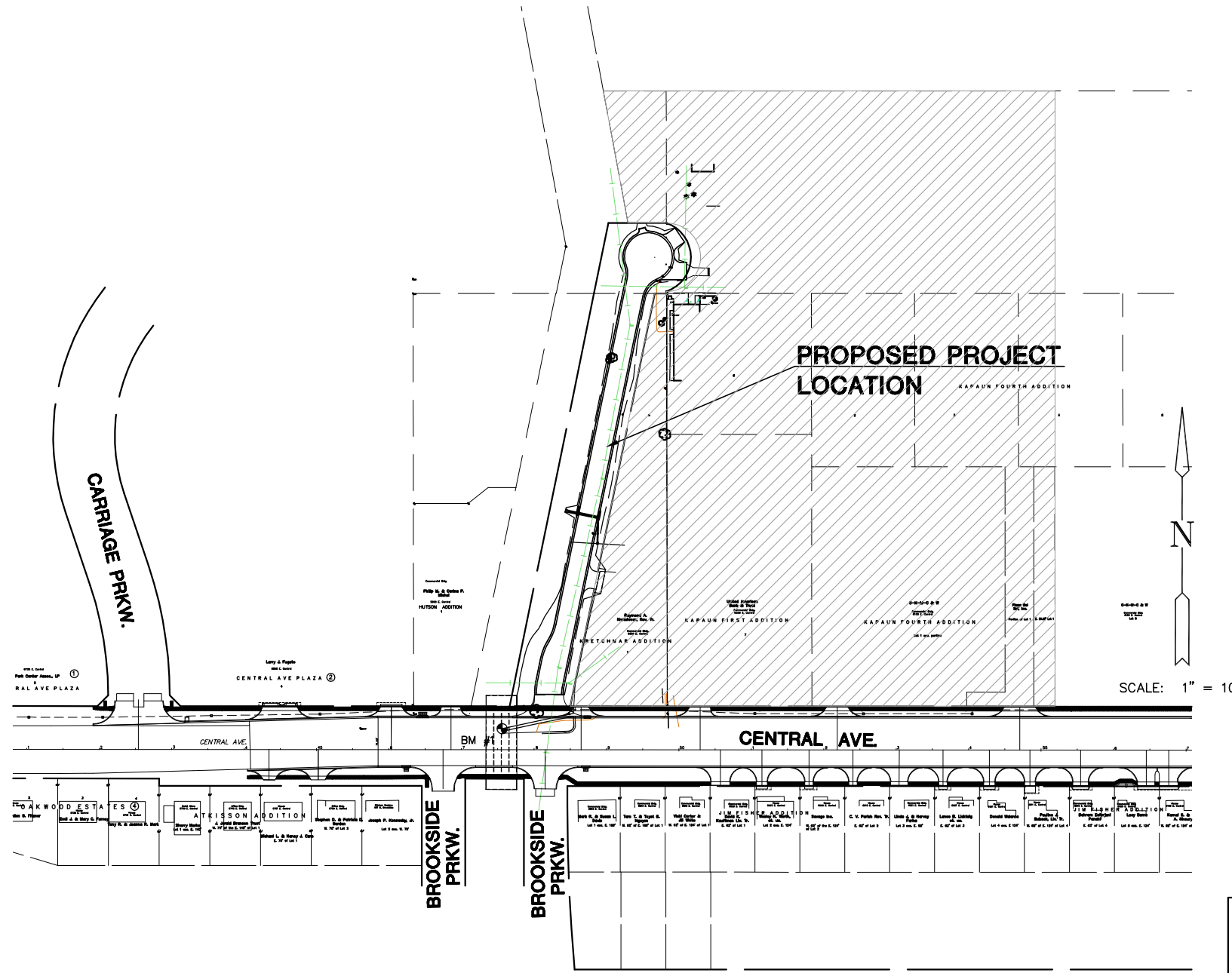


SITE LOCATION

LOCATION MAP

## INDEX TO DRAWINGS


SHEET NO.	DESCRIPTION
1	TITLE SHEET
2	TYPICAL SECTION AND MISC. DETAILS
3-4	PLAN SHEETS
5-6	VALLEY GUTTER PLANS AND DETAILS
7	WHEELCHAIR RAMP DETAILS
8	INLET DETAILS
9	UNDERDRAIN DETAILS
10	MISC. DETAILS
11	MANHOLE FRAME AND COVER DETAILS
12	EROSION CONTROL SHEET
13-17	SOIL EROSION BMP SHEETS
18	PAVEMENT MARKING AND SIGNING PLAN
19-23	CROSS SECTIONS



## BENCHMARKS

BM #1 Square cut @ East end of RBC, North side of Central N 28.49, E 4755.80 Elev.=178.45

 BENEFIT DISTRICT



**BROOKSIDE PARKWAY PAVING IMPROVEMENTS**  
PROJECT NAME

---

**TITLE SHEET**  
SHEET TITLE

---

JRA DESIGN BY. JSB DRAWN BY. JRA CHECKED BY.

---

JAN. 2007 DATE 06656 JOB NO. 1/23 SHEET/OF