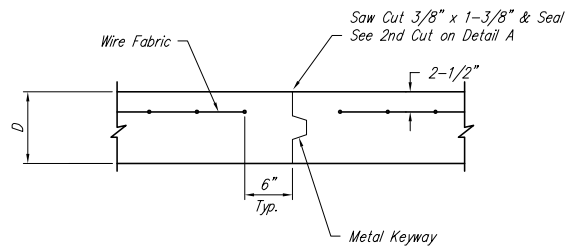
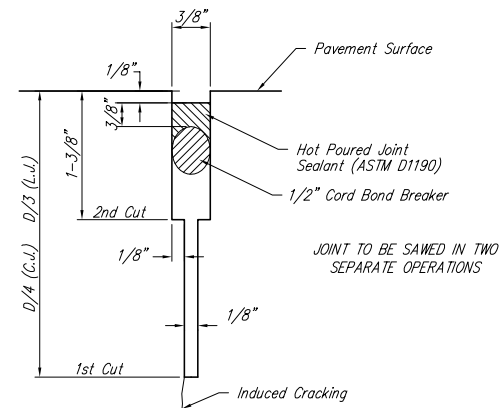


EXPANSION JOINT

NOTE: Extra Thickness to be Subsidiary to Price of Square Yards Pavement



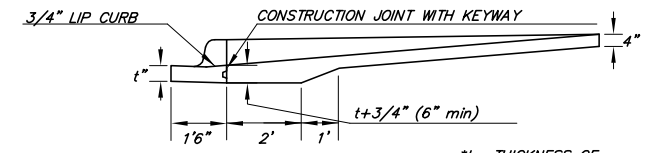
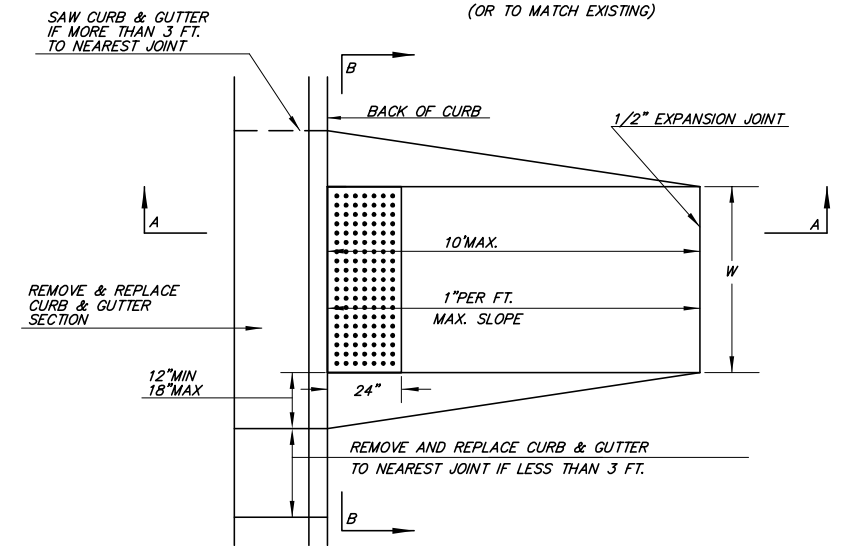
OPTIONAL CONTRACTION JOINT



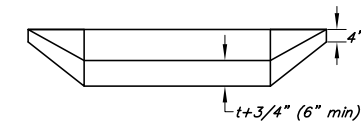
SAW JOINT DETAIL

STANDARD WHEELCHAIR RAMP CONSTRUCTION DETAIL FOR STREETS WITH COMBINED CURB & GUTTER (TYPE A)

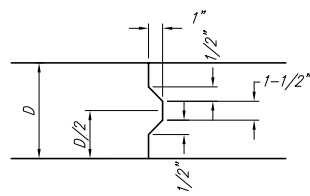
W= 4'0" FOR STANDARD RAMP
W= 5'0" FOR RAMPS AT SCHOOL CROSSWALKS (OR TO MATCH EXISTING)



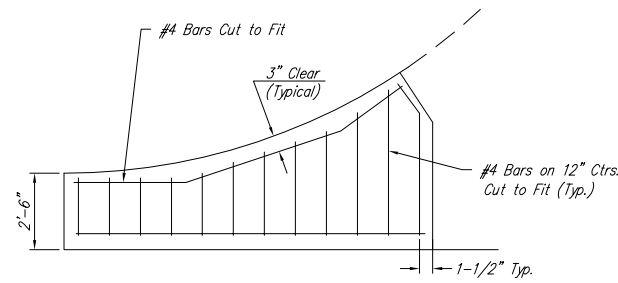
SECTION A-A



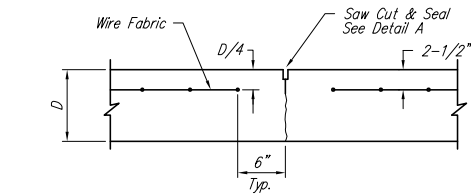
SECTION B-B



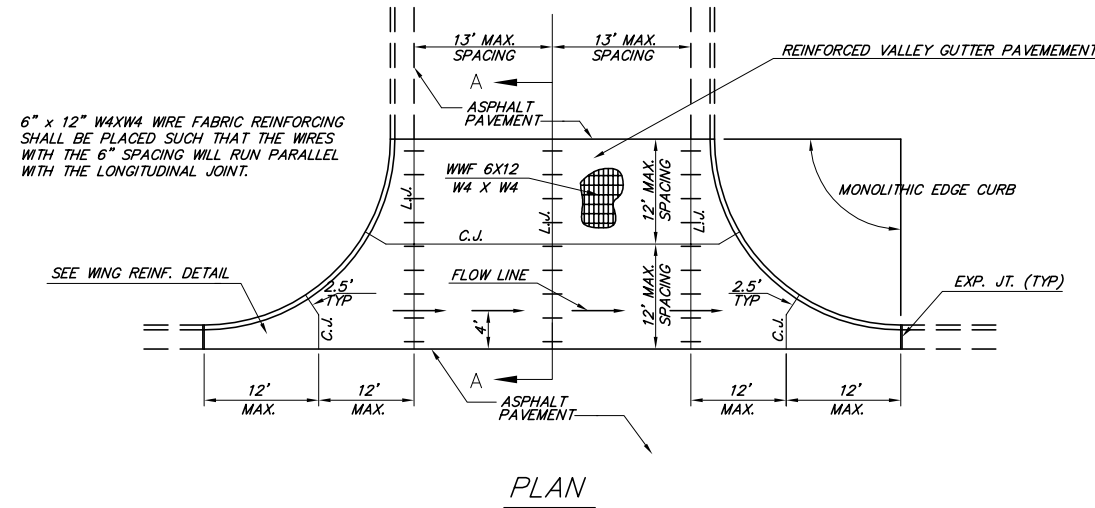
KEYWAY DETAIL



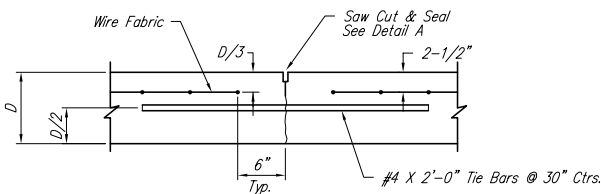
WING REINFORCING DETAIL



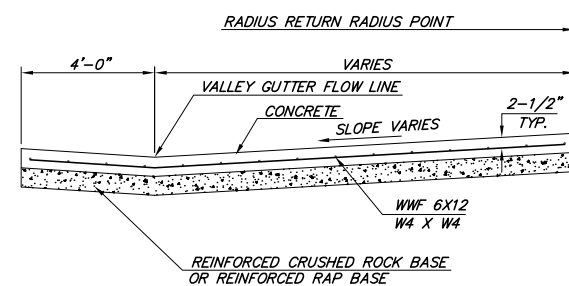
CONTRACTION JOINT DETAIL (C.J.)



PLAN

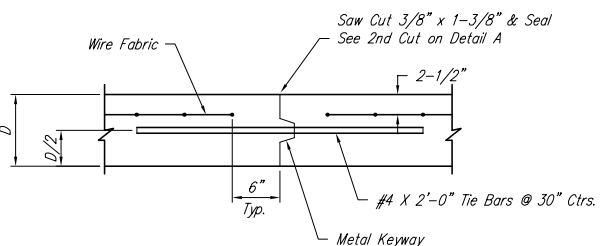


LONGITUDINAL JOINT DETAIL (L.J.)



SECTION A-A

REINFORCED VALLEY GUTTER DETAIL



OPTIONAL LONGITUDINAL JOINT DETAIL (L.J.)

| | | |
|--|--------------------------------|-----------------|
| <p>THE CITY OF WICHITA</p> <p>CITY ENGINEER'S OFFICE 455 NORTH MAIN STREET WICHITA, KANSAS 67202 (316) 268-4201 (316) 268-4114 FAX</p> | VALLEY GUTTER DETAILS | |
| | WHEELCHAIR RAMP DETAILS | |
| | PROJECT NUMBER 472-84448 | OCA # 766114 |
| | DATE MAR 96 | SHEET 4 OF 31 |