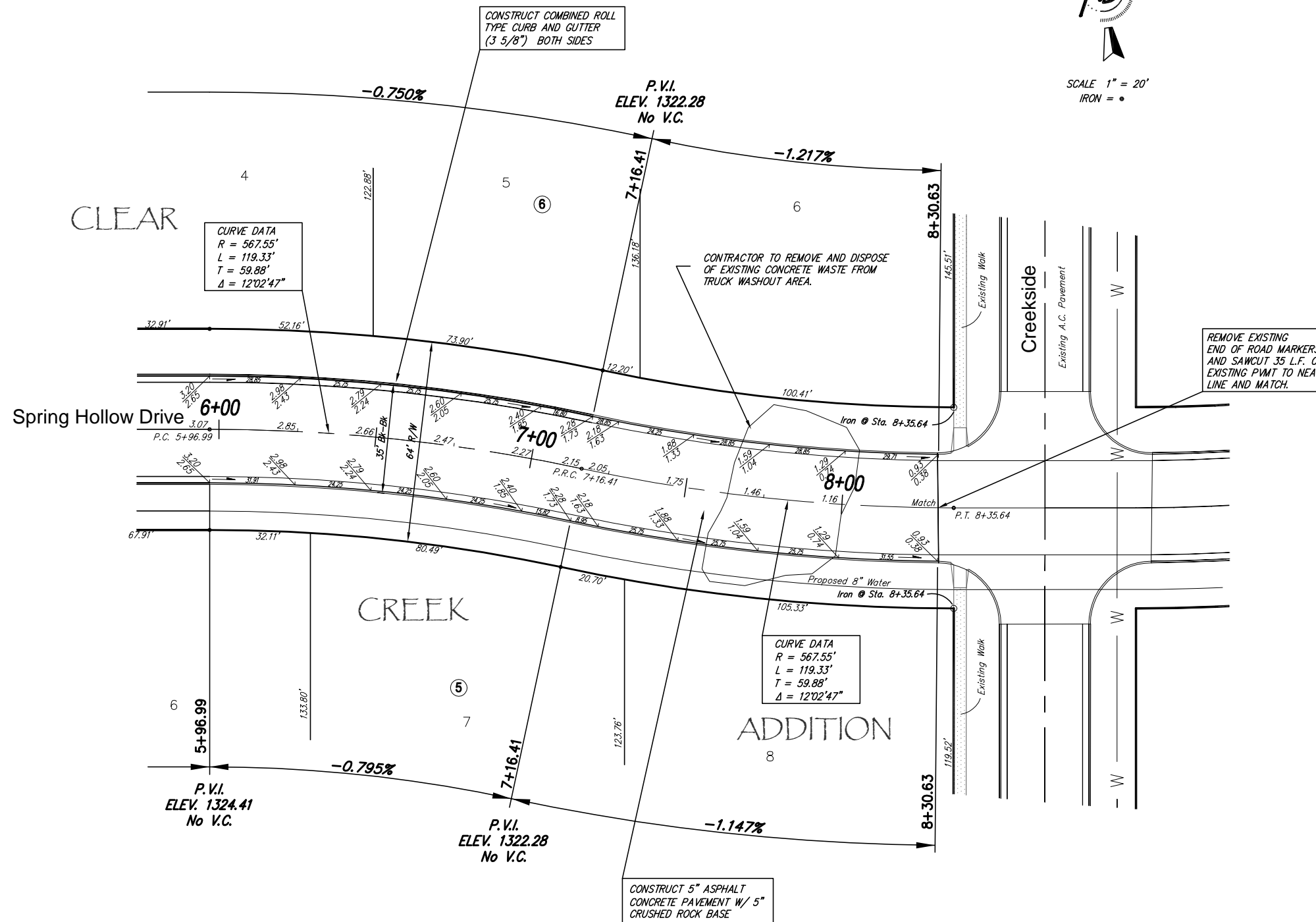


Subdivision Bench Marks

No.	Street and Station	From CL	Description	Elevation
1				
2				



SCALE 1" = 20'  
IRON = •



CURVE DATA  
R = 567.55'  
L = 119.33'  
T = 59.88'  
Δ = 12°02'47"

CURVE DATA  
R = 567.55'  
L = 119.33'  
T = 59.88'  
Δ = 12°02'47"

CURVE #6

Curve Data Based on Centerline  
Rad. = 567.55' Delta = 12°02'47" Tangent = 59.88'  
Arc = 119.33' L.C. = 119.11' Def/Ft. = 3.02851 Min.

Station	Arc	FACE CHORD LENGTHS		Defl.	T. Defl.
		8 Lt.	8 Rt.		
5+96.99	-	-	-	0'00'00"	0'00'00"
6+00.00	3.01'	3.14'	2.88'	0'09'07"	0'09'07"
6+25.00	25.00'	26.10'	23.90'	1'15'43"	1'24'50"
6+50.00	25.00'	26.10'	23.90'	1'15'43"	2'40'33"
6+75.00	25.00'	26.10'	23.90'	1'15'43"	3'55'16"
7+16.41	41.41'	43.22'	39.58'	2'05'24"	6'00'40"

CURVE #6

Curve Data Based on Centerline  
Rad. = 567.55' Delta = 12°02'47" Tangent = 59.88'  
Arc = 119.33' L.C. = 119.11' Def/Ft. = 3.02851 Min.

Station	Arc	FACE CHORD LENGTHS		Defl.	T. Defl.
		8 Lt.	8 Rt.		
7+16.41	-	-	-	0'00'00"	0'00'00"
7+25.00	8.59'	8.21'	8.97'	0'26'01"	0'26'01"
7+50.00	25.00'	23.90'	26.10'	1'15'43"	1'41'44"
7+75.00	25.00'	23.90'	26.10'	1'15'43"	2'57'27"
8+00.00	25.00'	23.90'	26.10'	1'15'43"	4'13'10"
8+35.64	35.64'	34.06'	37.20'	1'47'56"	6'01'06"

NOTE: ROLL TYPE CURB AND GUTTER TO BE CONSTRUCTED ALONG PAVEMENT DEPICTED ON THIS SHEET

Clear Creek Addition, Paving Improvements  
Spring Hollow Drive  
WICHITA, KANSAS



Ruggles & Bohm, P.A.  
Engineering, Surveying, Land Planning

924 North Main (316) 264-8008  
Wichita, Kansas 67203 (316) 264-4621 fax  
www.rbkansas.com E-mail: info@rbkansas.com

DRAWING FILE paving {Spring Hollow 2} PROJECT NUMBER .

DESIGN	KWL	SHEET 8 OF 31
DRAWN	RA	
REVIEW		
UTILITY		
DATE	Dec. 21, 2006	