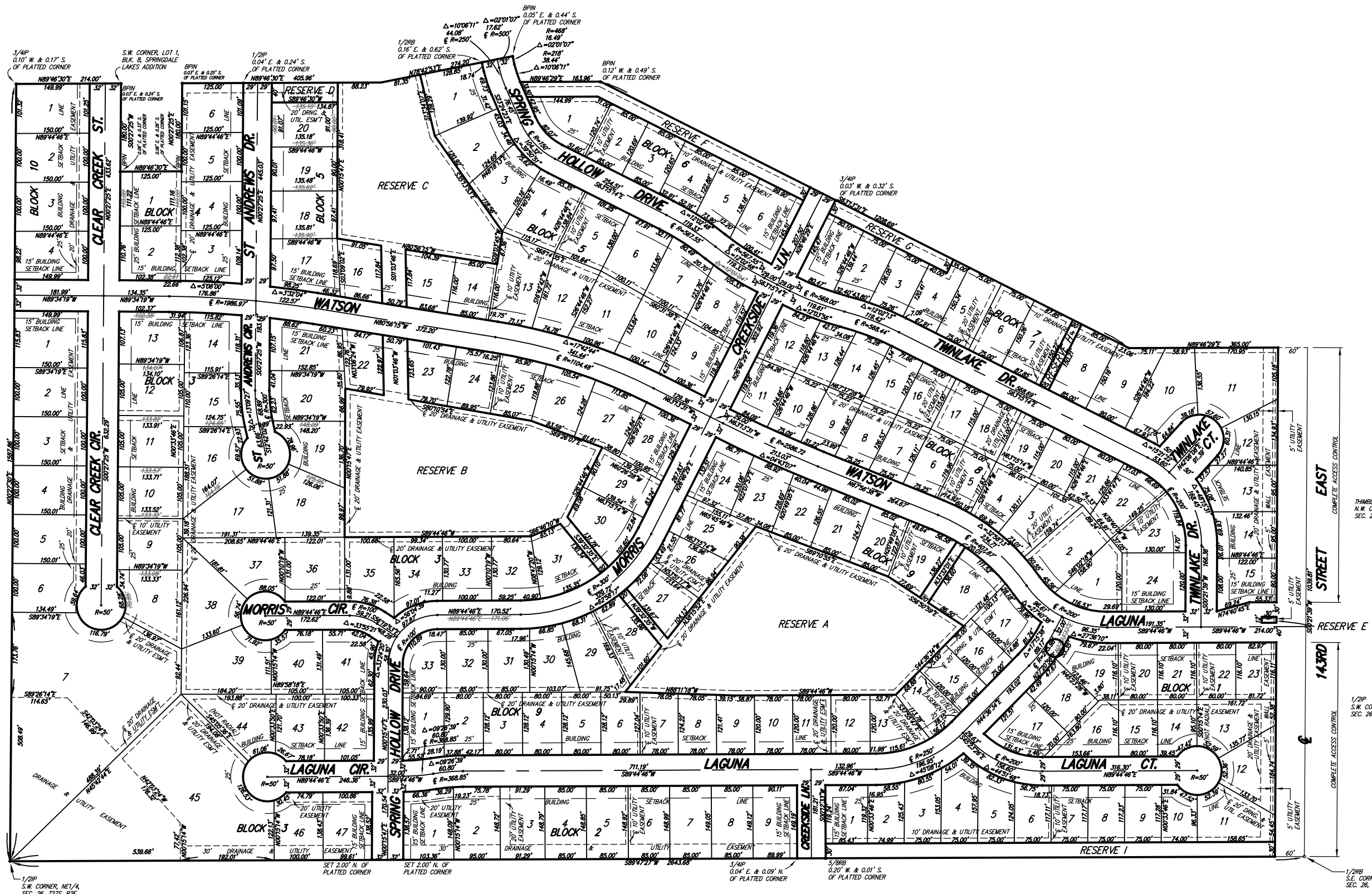


# CLEAR CREEK ADDITION

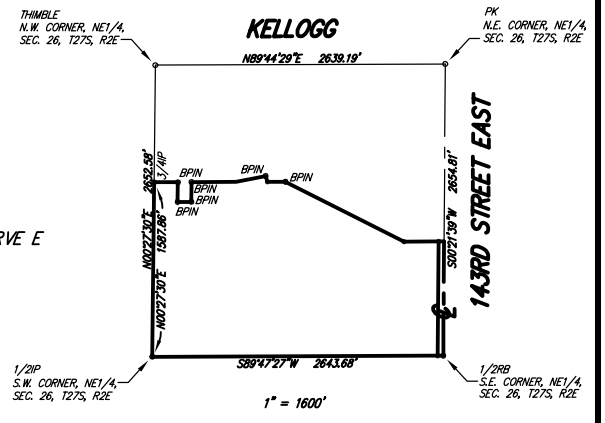
Wichita, Sedgwick County, Kansas



- SURVEY MARKER LEGEND**
- THIMBLE = 5/8" REBAR IN THIMBLE (FOUND)
  - 1/2" IR = 1/2" IRON PIPE (FOUND)
  - 1/2P = 1/2" IRON PIPE (FOUND)
  - 3/4P = 3/4" IRON PIPE (FOUND)
  - 5/8RB = 5/8" REBAR (FOUND)
  - BPIN = 5/8" REBAR W/BAUGHMAN CAP (FOUND)
  - PK = PK NAIL W/KEC WASHER (FOUND)
  - = 5/8" REBAR W/R&B CAP (SET)

BENCH-MARK: R.R. SPIKE WEST FACE POWER POLE 38 FEET WEST OF THE S.E. CORNER, SEC. 16, T27S, R2E ELEV. = 1314.88 NGVD

BENCH-MARK: R.R. SPIKE WEST FACE POWER POLE 38 FEET WEST OF THE S.E. CORNER OF THE NE 1/4, SEC. 26, T27S, R2E ELEV. = 1314.88 NGVD



1/20P S.W. CORNER, NE 1/4, SEC. 26, T27S, R2E

SET 2.00' N. OF PLATTED CORNER

3/40P 0.20' W. & 0.01' S. OF PLATTED CORNER

1/20P S.E. CORNER, NE 1/4, SEC. 26, T27S, R2E



**Ruggles & Bohm, P.A.**  
 Engineering, Surveying, Land Planning  
 924 North Main  
 Wichita, Kansas 67203  
 www.rbkansas.com  
 (316) 264-8008  
 (316) 264-4821 fax  
 E-mail: info@rbkansas.com

DWG FILE: 2266P-W.C.  
 PROJECT NO. 10K02266P  
 APR. 9, 2003