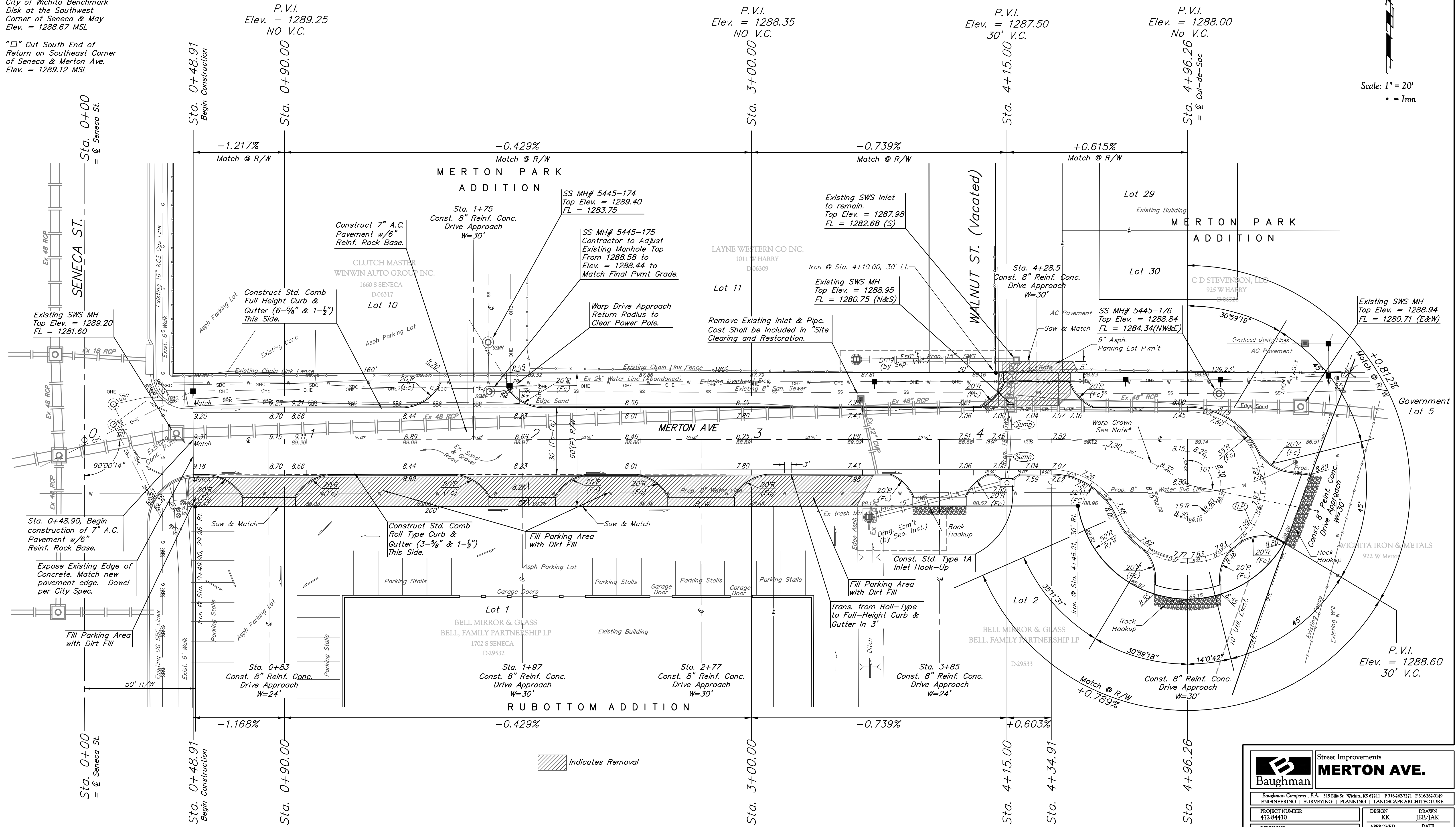
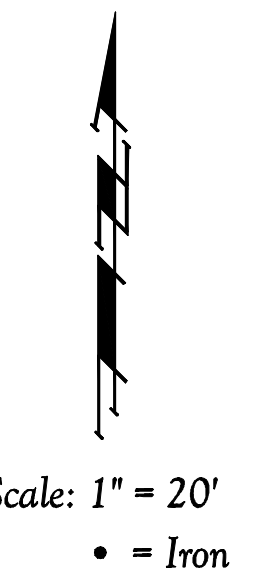


BENCHMARKS:

City of Wichita Benchmark
Disk at the Southwest
Corner of Seneca & May
Elev. = 1288.67 MSL

"□" Cut South End of
Return on Southeast Corner
of Seneca & Merton Ave.
Elev. = 1289.12 MSL



Indicates Removal

		Street Improvements	
		MERTON AVE.	
Baughman Company, P.A. 315 Ellis St. Wichita, KS 67211 P 316-262-7271 F 316-262-0149			
ENGINEERING SURVEYING PLANNING LANDSCAPE ARCHITECTURE			
PROJECT NUMBER	DESIGN	DRAWN	
472-84410	KK	JEB/JAK	
REVISIONS:	JAK	DATE	
1.29.07	JAK	11/15/06	
3.02.07	JAK	SCALE	Noted
Fill area between dates	JAK	SHEET	
3.27.07	JAK		
Drives on south side			
			4R OF 17
E:\Eng\Merton Paving\Pav01			06-07-E592

NOTE:
Warp Crown to Conform to the Approx.
Center of Proposed Pavement.