

BENCHMARKS:

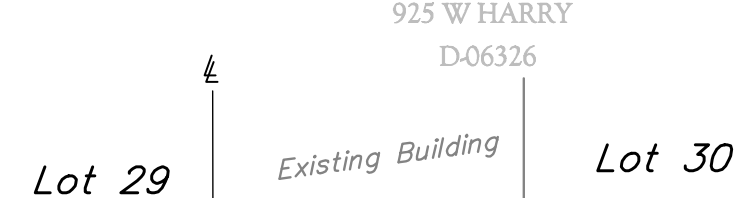
City of Wichita Benchmark
Disk at the Southwest
Corner of Seneca & May
Elev. = 1288.67 MSL

"□" Cut South End of
Return on Southeast Corner
of Seneca & Merton Ave.
Elev. = 1289.12 MSL

Pav. Sta. 4+19.30, 35.56' Lt.
Sta. 0+00, Begin SWS Line 2
Core Existing Drop Inlet &
Extend 15" RCP West.
Seal & Grout Water Tight.
Contractor to Verify Depth
and Location of Existing Drop
Inlet Prior to Construction.

Remove & Replace Existing Fence
and Existing Asphalt Pavement as
Necessary for Construction.
Cost to be Included in Bid Item
"Site Clearing & Restoration"

C D STEVENSON, LLC
925 W HARRY
D-06326



MERTON PARK
ADDITION

WALNUT ST. (Vacated)

SWS LINE 2

Pav. Sta. 3+47.30, 36.00' Lt.
Sta. 0+00, Begin SWS Line 1
Reconst. Existing Reinf. Conc.
Manhole into Std Drive Inlet.
(See Detail, Sheet 8)
Top Elev. = 1287.00

LAYNE WESTERN CO INC.
1011 W HARRY
D-06309

Lot 11

Pav. Sta. 4+19.30, 35.56' Lt.
Sta. 0+72.0, End SWS Line 2
Const. Special Yard Inlet.
Top Elev. = 1286.70

Construct Erosion Control
Straw Bale Barrier Around
Inlet. See Detail, Sheet 11.

BELL MIRROR & GLASS
BELL, FAMILY PARTNERSHIP LP
D-29533

Lot 2

SWS LINE 1

Pav. Sta. 3+52.90, 35.00' Rt.
Sta. 0+98.3, End SWS Line 1
Const. Special Yard Inlet.
Top Elev. = 1287.50

Construct Erosion Control
Straw Bale Barrier Around
Inlet. See Detail, Sheet 11.

BELL MIRROR & GLASS
BELL, FAMILY PARTNERSHIP LP
1702 S SENECA
D-29532

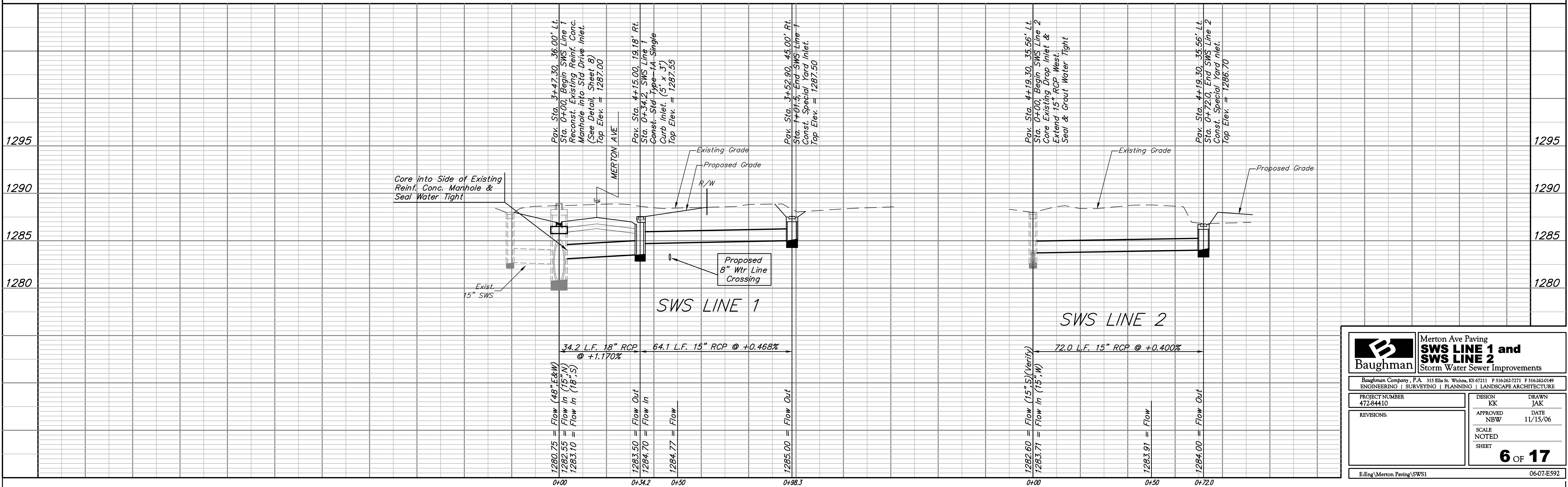
RUBOTTOM
ADDITION

Lot 1

Baseline =
Merton



SCALE:
1" = 20' HORIZONTAL
1" = 5' VERTICAL
• = IRON



| | | | |
|---|-----------------|--|------------------|
| | | Merton Ave Paving SWS LINE 1 and SWS LINE 2 Storm Water Sewer Improvements | |
| Baughman Company, P.A. 315 Ellis St. Wichita, KS 67211 P 316-262-7271 F 316-262-0149 ENGINEERING SURVEYING PLANNING LANDSCAPE ARCHITECTURE | | | |
| PROJECT NUMBER 472-84410 | DESIGN KK | DRAWN JAK | DATE 11/15/06 |
| REVISIONS: | APPROVED NBW | SCALE NOTED | SHEET |
| | | | 6 OF 17 |
| E:Eng\Merton Paving\SWS1 | | | 06-07-E592 |