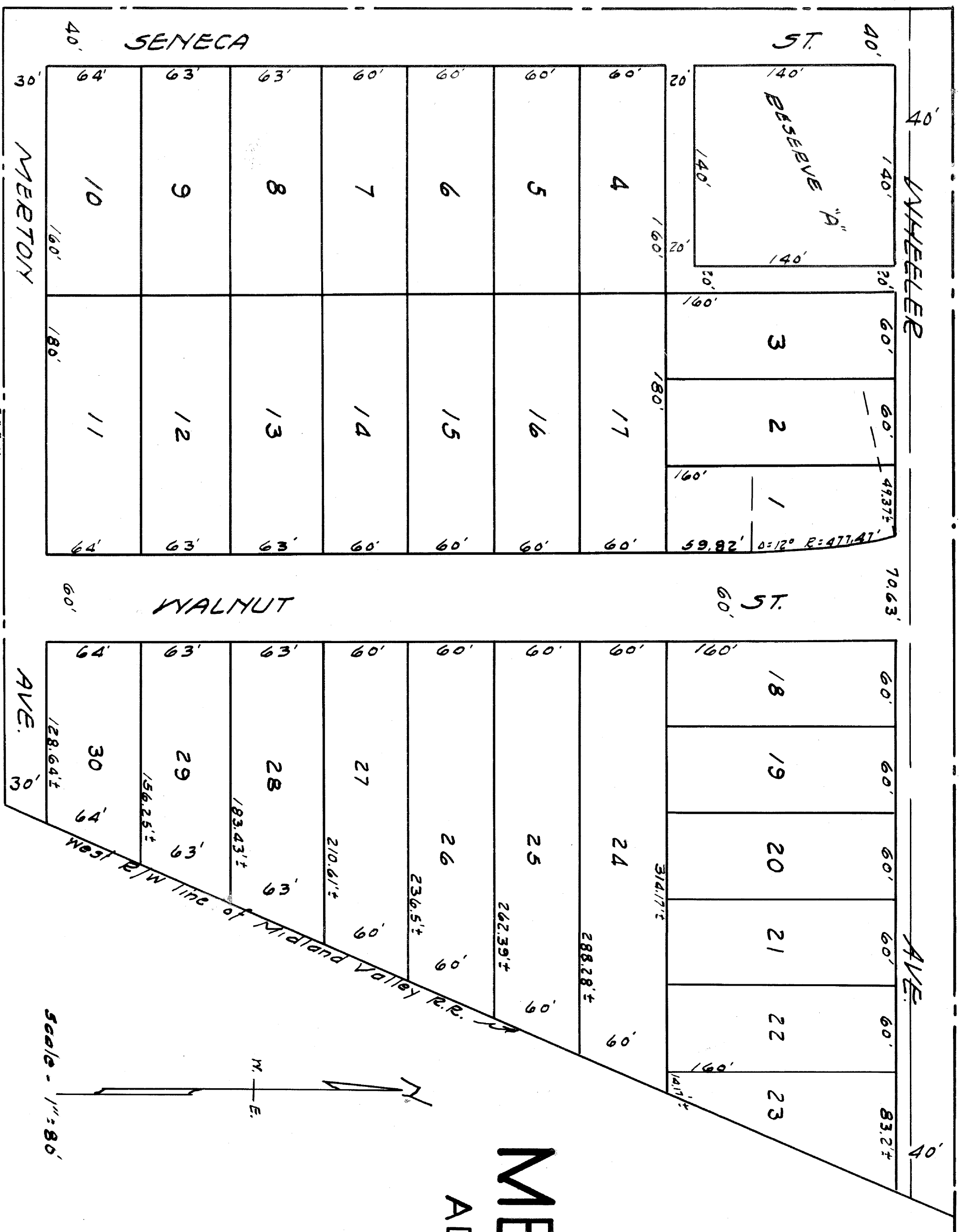


M-1-8-2



# MERTON PARK ADDITION TO WICHITA KANS.

State of Kansas } ss: Clyde M. Baughman, County Surveyor  
 County of Sedgwick }  
 I have surveyed and platted MERTON PARK ADDITION to  
 Wichita Kansas, and that the accompanying plat is a true  
 and correct exhibit of the property as surveyed described as  
 follows: - the north 660 feet of lot 5, Section 32, Twp. 27, R. 1  
 East of the 6th P.M., Sedgwick County, Kansas, lying west of  
 the westerly line of the Midland Valley Railroad, except the  
 north 30' thereof.

*Clyde M. Baughman* County Surveyor

Know all men by these presents  
 that we, Carl G. Aley and Julia B. Aley, husband and wife,  
 have caused the land described in the surveyor's  
 certificate to be surveyed and platted into lots, streets,  
 avenues, a reserve and alley to be known as Merton Park  
 Addition to Wichita, Kansas. The streets, Avenues, and Alley  
 are dedicated to and for the use of the public, said  
 dedication not to interfere with the encroachments of any  
 existing buildings that now encroach on some during their  
 normal existence. An easement is hereby granted on the  
 rear 25 feet of lots 4 to 10 inc, on the rear 5 feet of lots 11 to 17 inc.  
 and on the rear 10 feet of all other lots, all for the construction and  
 maintenance of all public utilities.

*Carl G. Aley*  
*Julia B. Aley*

State of Kansas } ss: *Julia B. Aley*  
 County of Sedgwick }  
 before me a notary public in and for said county and state, came Carl G. Aley and Julia B.  
 Aley, husband and wife, to me personally known to be the same persons who executed the  
 foregoing instrument of writing, and duly acknowledged the same as their voluntary act and deed  
 my commission expires *July 14th* *1939* *Julius A. Amshary* Notary Public

This plat of Merton Park Addition has been sub-  
 mitted to and considered by The City Planning Commission of  
 the City of Wichita, Kansas, and is hereby transmitted to the Board  
 of Commissioners of the City of Wichita, Kansas, with the  
 recommendation that such plat be approved as proposed  
 Dated this 28th day of July, 1939.  
 The City Planning Commission of the City of Wichita, Kansas,  
 Attest: *W. M. Winkler* Secretary  
 by *W. M. Winkler* President

Approved by the Board of City Commissioners  
 this 31st day of July 1939.  
*W. B. Bell* City Clerk.

Approved by the Board of County Commissioners  
 of Sedgwick County, this 3rd day of August 1939.

Entered on Transfer Book of Sedgwick County Clerk,  
 this 3rd day of August 1939.  
*Clyde M. Baughman* County Clerk.

State of Kansas } ss:  
 County of Sedgwick }  
 This is to certify that this instrument  
 was filed for record in the Register of  
 Deeds office on the 3rd day of August 1939,  
 at 10 o'clock A.M. and is duly recorded  
*Frank E. Myers*  
 Registrar of Deeds.