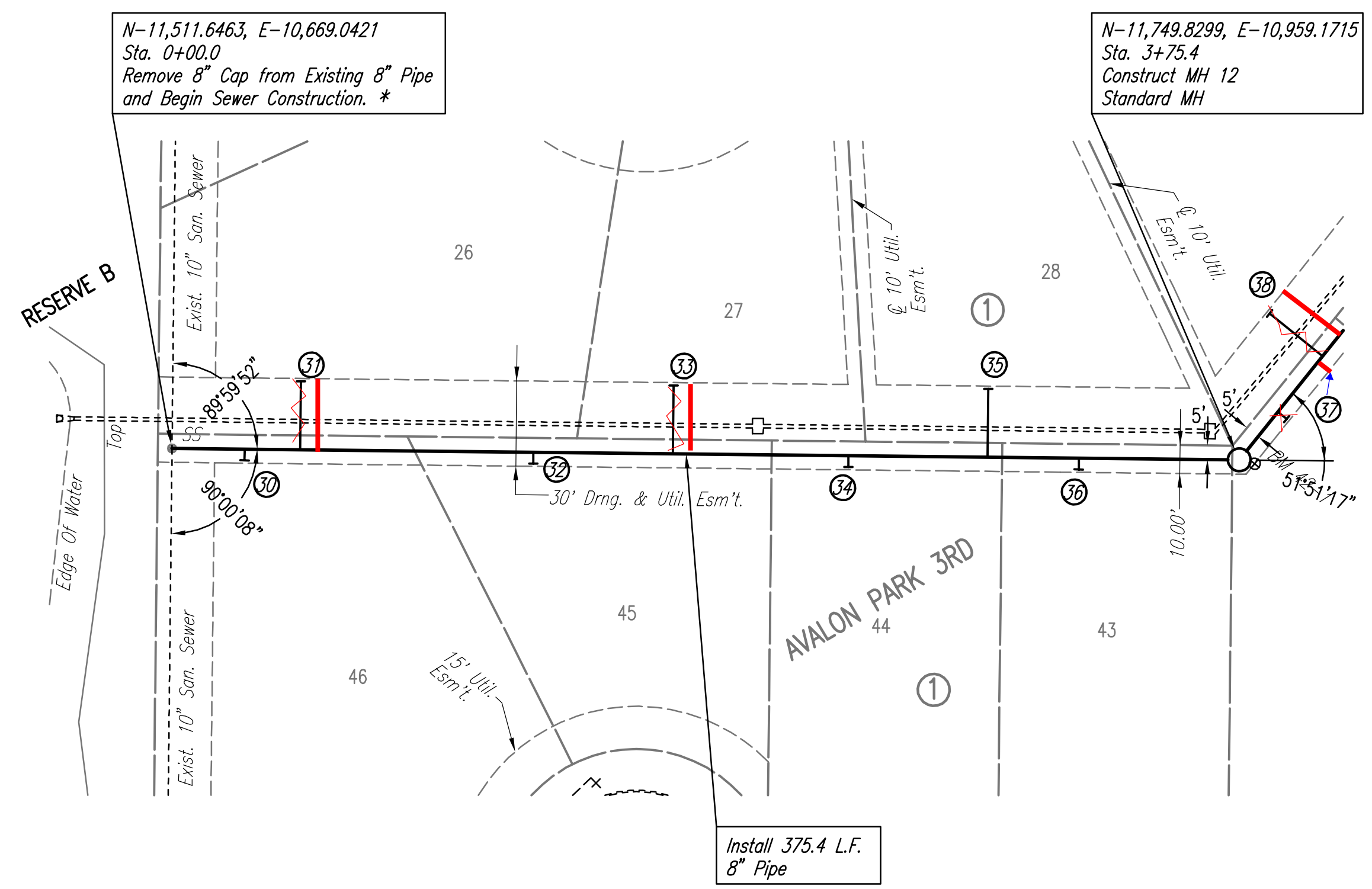
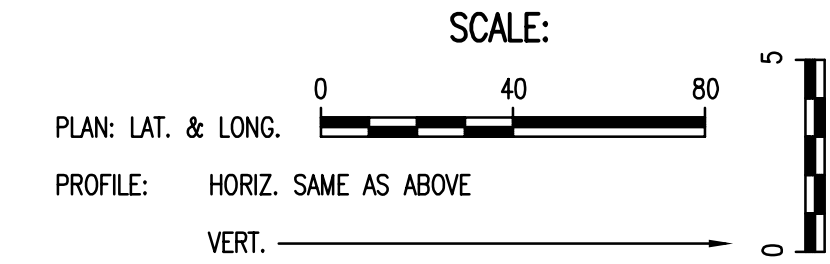


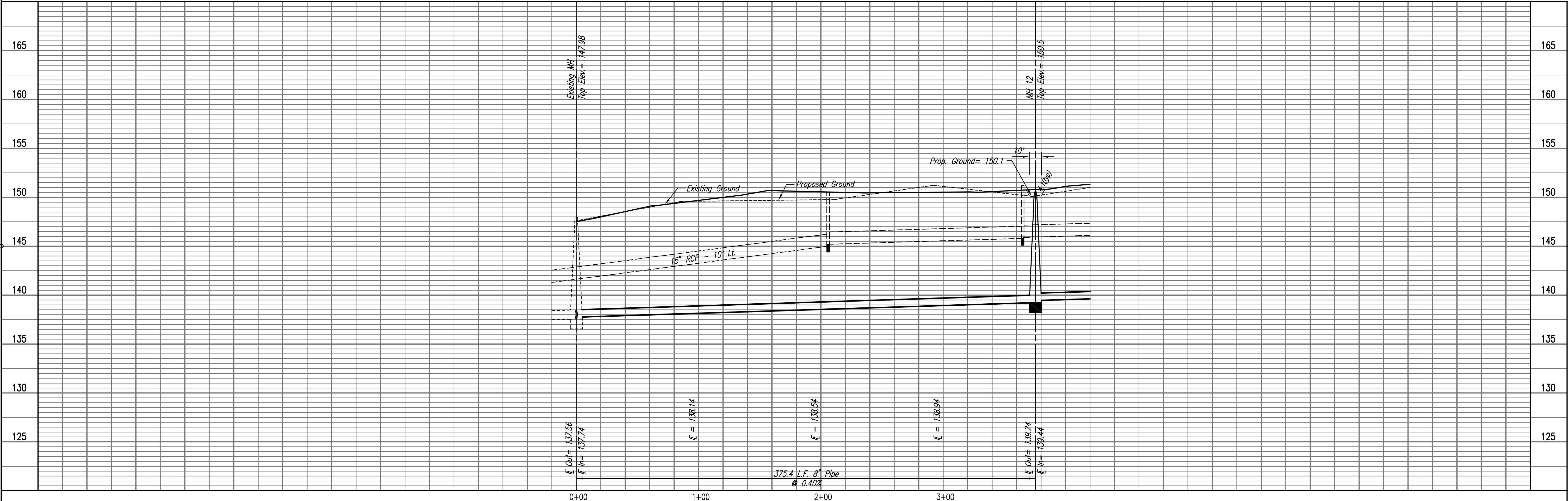
PLAN
 CHECKED
 CHECKED
 BY
 DATE

PROFILE
 CHECKED
 CHECKED
 BY
 DATE



* PRIOR TO BEGINNING CONSTRUCTION, THE CONTRACTOR SHALL EXCAVATE THE EXISTING 8" PVC PIPE AT SANITARY SEWER STATION 0+00.0 TO VERIFY ITS HORIZONTAL AND VERTICAL LOCATION. THE PIPE LOCATION SHALL BE REPORTED TO THE ENGINEER SO THAT ANY NECESSARY PLAN MODIFICATIONS CAN BE MADE. ANY ADDITIONAL LABOR OR MATERIALS NECESSARY TO COMPLETE THE CONNECTION SHALL BE CONSIDERED SUBSIDIARY TO THE PROJECT.

SANITARY SEWER LINE NO. 4



Saved: 06-08-2007 2:47:08 PM by JAW
 Plot Scale: 1/40 06-11-2007 3:11:03 PM by BEJ
 J:\SENTOU\2007\07150\2007-06-11 to City\Sanitary Sewer\DWG\10-Line04

LATERAL 26, MAIN 19
 OF THE SOUTHWEST INTERCEPTOR SEWER
 SANITARY SEWER LINE NO. 4
 JAMES L. ARMOUR, P.E. - CITY ENGINEER
 CITY OF WICHITA PROJECT NO. 468-84216

Professional Engineering Consultants, P.A.
 803 S. TOPICKA AVENUE, WICHITA, KANSAS 67202
 316-262-2691 • FAX 316-262-3005
 Job No. 35-07150-1-042
 Date APRIL 2007
 Designed By MDK
 Drawn By JAN