

NOTE:
ALL EXISTING UTILITIES MAY NOT BE SHOWN.
CONTRACTOR SHALL CONTACT ONE-CALL TO
VERIFY LOCATION OF ALL EXISTING UTILITIES

NOTE: CONTRACTOR SHALL
PROTECT EXISTING TREES. ALL
TREE REMOVAL SHALL BE
APPROVED BY MKEC PRIOR TO
TREES BEING REMOVED.

CURVE TABLE

$\Delta = 49^{\circ}29'31''$ R = 226.00' T = 104.17' L = 195.22' LC = 169.21'

CURVE DATA BASED ON WATERLINE $\Delta / 2 = 24^{\circ}44'45''$

STATION	ARC	6'LT Offset	6'RT Offset	DEFLECTION	DEFLECTION
15+31.35				00'00"00"	00'00"00"
15+50.00	18.65'		19.14'	02'21"51"	02'21"51"
15+75.00	25.00'		25.65'	03'10"08"	05'31"59"
16+00.00	25.00'		25.65'	03'10"08"	08'42"08"
16+25.00	25.00'		25.65'	03'10"08"	11'52"16"
16+50.00	25.00'		25.65'	03'10"08"	15'02"25"
16+75.00	25.00'		25.65'	03'10"08"	18'12"33"
17+00.00	25.00'		25.65'	03'10"08"	21'22'41"
17+25.00	25.00'		25.65'	03'10"08"	24'32'50"
17+26.57	1.57'		1.61'	00'11"56"	24'44'45"

Del/Ft = 7.60563 Min.

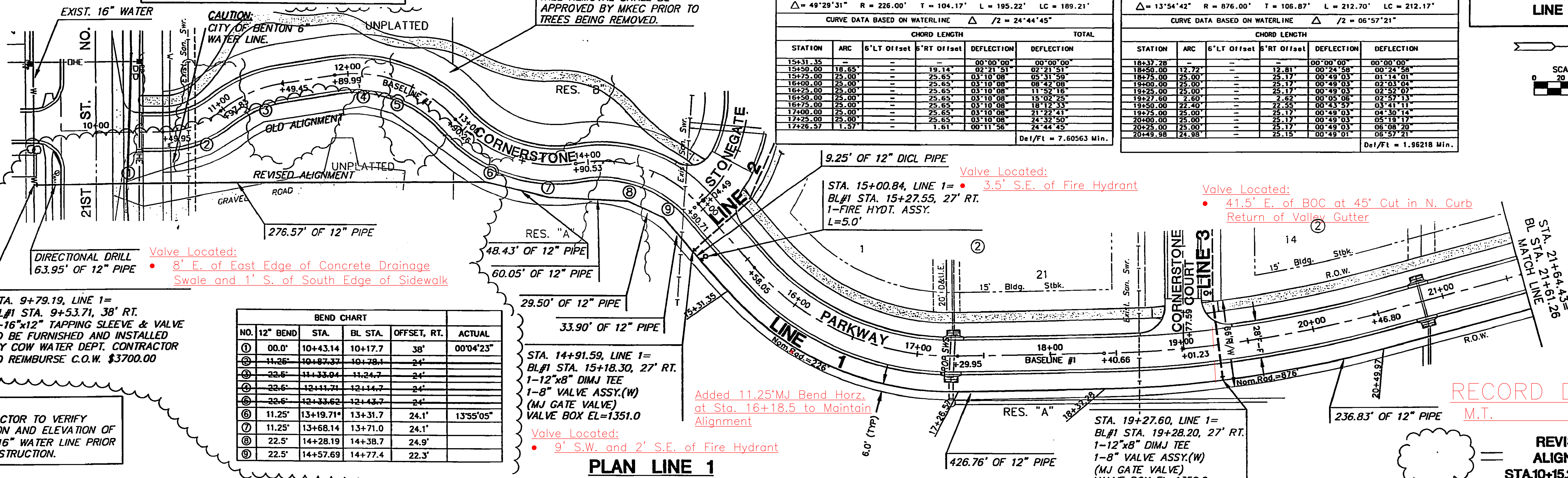
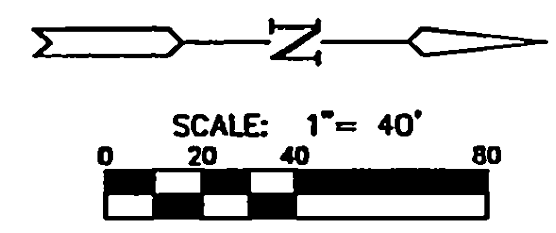
CURVE TABLE

$\Delta = 13^{\circ}54'42''$ R = 876.00' T = 106.87' L = 212.70' LC = 212.17'

CURVE DATA BASED ON WATERLINE $\Delta / 2 = 06^{\circ}57'21''$

STATION	ARC	6'LT Offset	6'RT Offset	DEFLECTION	DEFLECTION
18+37.28				00'00"00"	00'00"00"
18+50.00	12.72'		12.81'	00'24"58"	00'24"58"
18+75.00	25.00'		25.17'	00'49'03"	01'14'01"
19+00.00	25.00'		25.17'	00'49'03"	02'03'04"
19+25.00	25.00'		25.17'	00'49'03"	02'52'07"
19+50.00	25.00'		25.17'	00'49'03"	03'41'11"
19+75.00	25.00'		25.17'	00'49'03"	04'30'14"
20+00.00	25.00'		25.17'	00'49'03"	05'19'17"
20+25.00	25.00'		25.17'	00'49'03"	06'08'20"
20+49.98	24.98'		25.15'	00'49'01"	06'57'21"

Del/Ft = 1.96218 Min.



BEND CHART

NO.	12" BEND	STA.	BL STA.	OFFSET, RT.	ACTUAL
①	00.0'	10+43.14	10+17.7	38'	00'04'23"
②	11.25'	10+87.37	10+78.1	24'	
③	22.5'	11+33.04	11+24.7	24'	
④	22.5'	12+11.71	12+14.7	24'	
⑤	22.5'	12+33.62	12+43.7	24'	
⑥	11.25'	13+19.71*	13+31.7	24.1'	13'55'05"
⑦	11.25'	13+68.14	13+71.0	24.1'	
⑧	22.5'	14+28.19	14+38.7	24.9'	
⑨	22.5'	14+57.69	14+77.4	22.3'	

STA. 14+91.59, LINE 1 =
BL#1 STA. 15+18.30, 27' RT.
1-12"x8" DIMJ TEE
1-8" VALVE ASSY.(W)
(MJ GATE VALVE)
VALVE BOX EL=1351.0

Valve Located:
• 9' S.W. and 2' S.E. of Fire Hydrant

PLAN LINE 1

STA. 9+79.19, LINE 1 =
BL#1 STA. 9+53.71, 38' RT.
1-16"x12" TAPPING SLEEVE & VALVE
TO BE FURNISHED AND INSTALLED
BY COW WATER DEPT. CONTRACTOR
TO REIMBURSE C.O.W. \$3700.00

NOTE:
CONTRACTOR TO VERIFY
LOCATION AND ELEVATION OF
EXIST. 16" WATER LINE PRIOR
TO CONSTRUCTION.

RECORD DRAWING
M.T. 1-12-09

REVISED 12-27-05
ALIGNMENT FROM
STA.10+15.23 TO STA.13+19.71

