

FINAL PLANNED UNIT DEVELOPMENT THE CORNERSTONE FIRST ADDITION

AN ADDITION TO ANDOVER, BUTLER COUNTY, KANSAS
 LYING IN A PORTION OF THE SOUTHEAST QUARTER, SECTION 6, TOWNSHIP 27 SOUTH, RANGE 3 EAST, OF THE SIXTH PRINCIPAL MERIDIAN, TOGETHER WITH
 A PORTION OF THE SOUTHWEST QUARTER OF THE NORTHEAST QUARTER, SECTION 6, TOWNSHIP 27 SOUTH, RANGE 3 EAST, OF THE SIXTH PRINCIPAL MERIDIAN
 and being part of the Cornerstone Preliminary Planned Unit Development

PLANNING COMMISSION CERTIFICATE

STATE OF KANSAS, BUTLER COUNTY) ss:
 This Final Planned Unit Development, THE CORNERSTONE FIRST ADDITION, an addition to the City of Andover, Butler County, Kansas, was approved by the Andover City Planning Commission.
 Dated this 17th day of May, 2005.
 ANDOVER PLANNING COMMISSION
 Clark Nelson, Chair
 Secretary

GOVERNING BODY CERTIFICATE

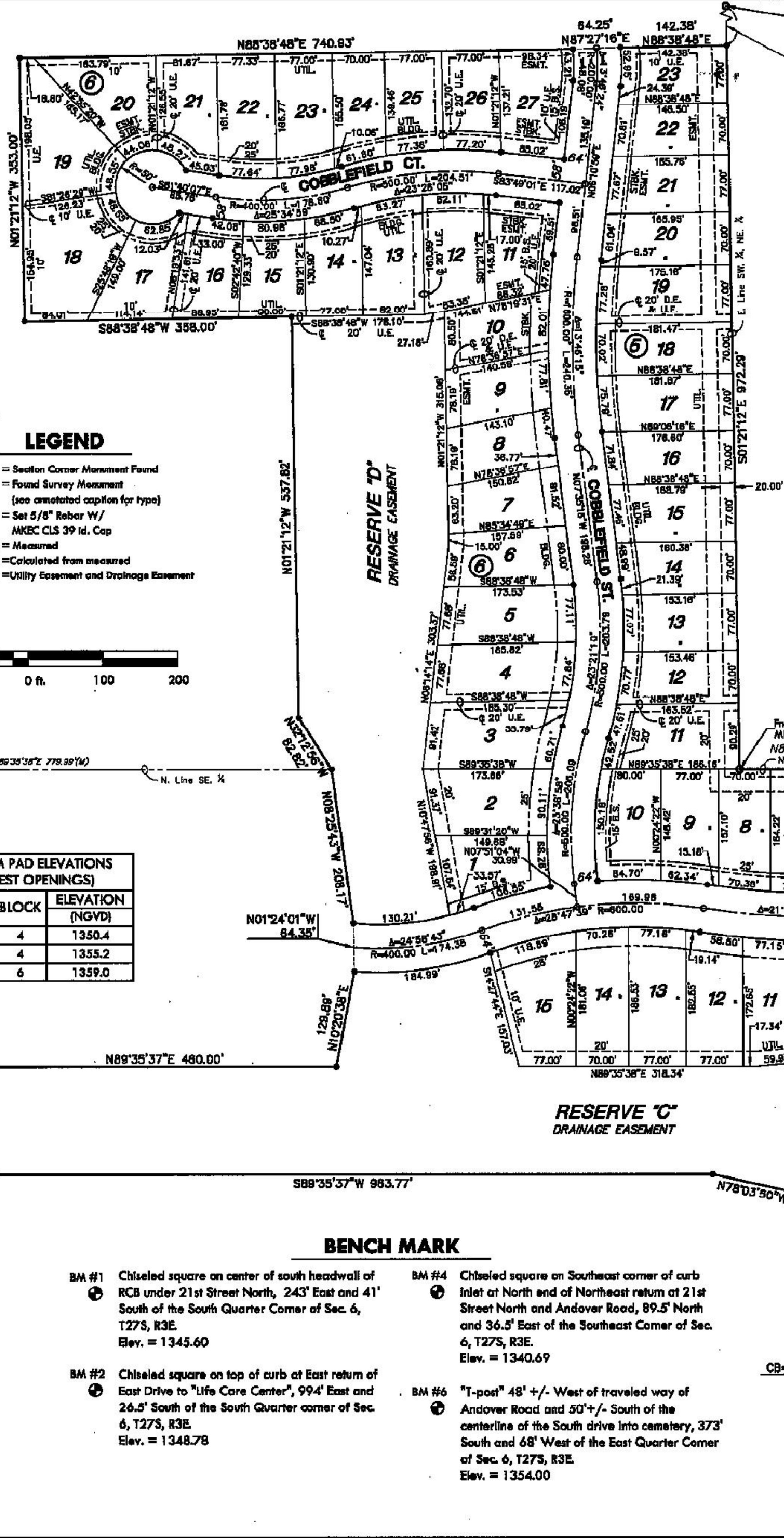
STATE OF KANSAS, BUTLER COUNTY) ss:
 The declaration shown on this Final Planned Unit Development, are hereby accepted by the Governing Body of the City of Andover, Kansas.
 Dated this 14th day of June, 2005.
 Mayor
 Ben Lawrence, Mayor
 Attest:
 Jeffrey K. Blum, City Clerk

REGISTER OF DEEDS CERTIFICATE

STATE OF KANSAS, BUTLER COUNTY) ss:
 This is to certify that this instrument was filed for record in the Register of Deeds office on this 5th day of December, 2005, at 9:30 o'clock A.M., and is duly recorded in Record Book _____, Page _____, Plat Book _____, Page _____, Deck _____, Folio _____.
 Register of Deeds
 Maric McCoy, Register of Deeds
 Deputy
 Teresa Dawson, Deputy

TRANSFER RECORD

STATE OF KANSAS, BUTLER COUNTY) ss:
 Entered on transfer record this 5th day of December, 2005.
 County Clerk
 Ronald Roberts, County Clerk



MINIMUM PAD ELEVATIONS (LOWEST OPENINGS)

LOTS	BLOCK	ELEVATION (NGVD)
1-11	4	1350.4
12-15	4	1355.2
1-15	6	1359.0

BENCH MARK

- BM #1 Chiseled square on center of south headwall of RCB under 21st Street North, 243' East and 41' South of the South Quarter Corner of Sec. 6, T27S, R3E. Elev. = 1345.60
- BM #2 Chiseled square on top of curb at East return of East Drive to Life Care Center, 99.4' East and 26.5' South of the South Quarter corner of Sec. 6, T27S, R3E. Elev. = 1348.78
- BM #3 Chiseled square on Southeast corner of curb Inlet at North end of Northeast return at 21st Street North and Andover Road, 89.5' North and 36.5' East of the Southeast Corner of Sec. 6, T27S, R3E. Elev. = 1340.69
- BM #4 "T-post" 48' +/- West of traveled way of Andover Road and 50' +/- South of the centerline of the South drive into cemetery, 373' South and 68' West of the East Quarter Corner of Sec. 6, T27S, R3E. Elev. = 1354.00

RECORD DRAWING
 M.T. 1-12-09

RESERVE "E" CURVE TABLE

CURVE	LENGTH	RADIUS	DELTA
C10	7.03'	2.50'	161°12'05"
C11	93.74'	638.50'	08°24'42"
C12	163.30'	300.00'	31°11'16"
C13	92.26'	338.50'	15°37'00"
C14	29.71'	9.52'	178°51'27"
C15	92.60'	343.50'	15°26'46"
C16	183.12'	300.00'	34°58'23"
C17	75.76'	643.50'	06°44'43"



MKEC ENGINEERING CONSULTANTS
 411 N. WEST ROAD
 WICHITA, KS 67214
 316-264-9400

NW 1/4 Cor., NE 1/4 Sec. 6, T27S, R3E, 6th P.M. Fnd. 1" bar w/ Standard Butler County lid cap
 29th St. N.
 21st St. N.
 19th St. E.
 County Line Rd.
 ANDOVER RD.
 Center 1/4 Cor., Sec. 4, T27S, R3E, 6th P.M. Fnd. 1" Rebar
 NW 1/4 Cor., SE 1/4 Sec. 6, T27S, R3E, 6th P.M. Fnd. 1" Bolt and Washer
 SW. Cor., SE 1/4 Sec. 6, T27S, R3E, 6th P.M. Fnd. 1" Bolt and Washer
 NE 1/4 Cor., SE 1/4 Sec. 6, T27S, R3E, 6th P.M. Fnd. 1/2" bar w/ Standard Butler County lid cap
 NE 1/4 Cor., SE 1/4 Sec. 6, T27S, R3E, 6th P.M. Fnd. 1/2" bar w/ Standard Butler County lid cap
 SE. Cor., SE 1/4 Sec. 6, T27S, R3E, 6th P.M. Fnd. 1/2" Pipe in Thimble