

**37TH STREET IMPROVEMENTS  
FROM  
MAIZE ROAD TO TYLER ROAD**

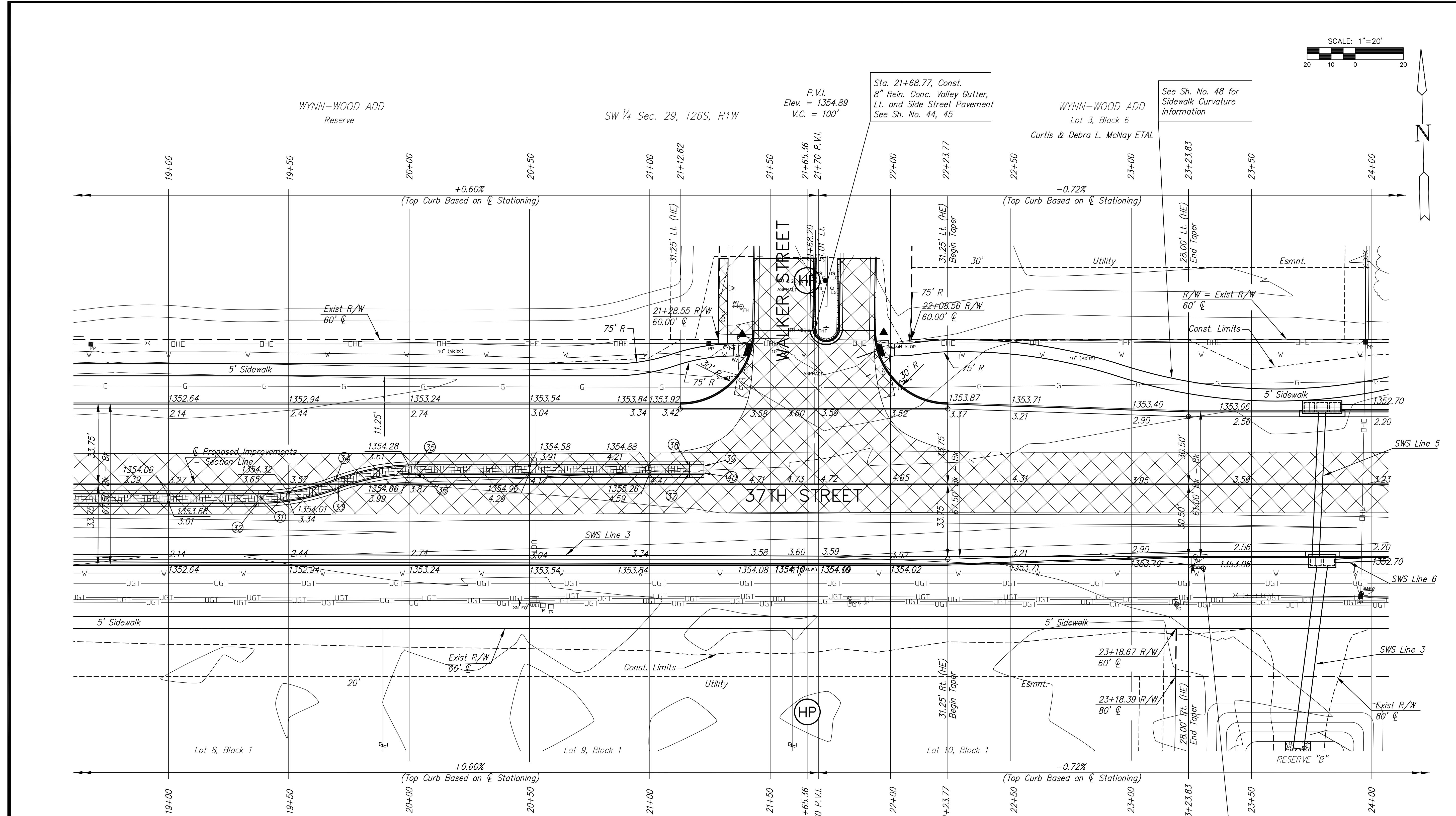
**PLAN SHEET  
STA 19+0.00  
TO  
STA 24+0.00**  
SHEET TITLE  
472-84693  
PROJECT NUMBER

DESIGN BY  
DRAWN BY  
CHECKED BY

ISSUED  
**March 24, 2009**  
REVISED

SHEET NO.  
**8 of 133**

J:\Civil\08137.DWG\PAV\08137-E4



**MEDIAN LOCATION**

Point No.	Station	Offset to Back	Elevation	
			Flowline	Top Curb
31	19+37.33	4.50' Rt.	1353.62	1354.29
32	19+37.33	7.50' Rt.	1353.24	1353.91
33	19+70.45	1.40' Rt.	1353.63	1354.30
34	19+69.39	1.40' Lt.	1353.62	1354.29
35	20+02.51	7.50' Lt.	1353.63	1354.30
36	20+02.51	4.50' Lt.	1354.01	1354.68
37	21+16.50	7.50' Lt.	1354.64	1355.31
38	21+16.50	7.50' Lt.	1354.31	1354.98
39	21+22.50	7.50' Lt.	1354.35	1355.02
40	21+22.50	4.50' Lt.	1354.73	1355.40

**UTILITY ADJUSTMENTS**

STATION	OFFSET	EXISTING ELEVATION	PROPOSED ELEVATION	REMARKS
21+34.16	56.4' Lt.	1354.84	1354.34	Water Valve Box
21+36.91	53.3' Lt.	1354.42	1354.18	Water Valve Box

- LEGEND**
- Pavement Removal
  - 2" Asphalt Milling & Overlay
  - Asphalt Pavement Widening
  - Brick Pavers
  - Construct Wheelchair Ramp See Sh. No. 49

PLOTTED: Tuesday, March 24, 2009 8:01:47 AM