

W.L. Sta. 5+91.51 Line 1 =
B.L. 1 Sta. 14+00.00 =
Match Point.

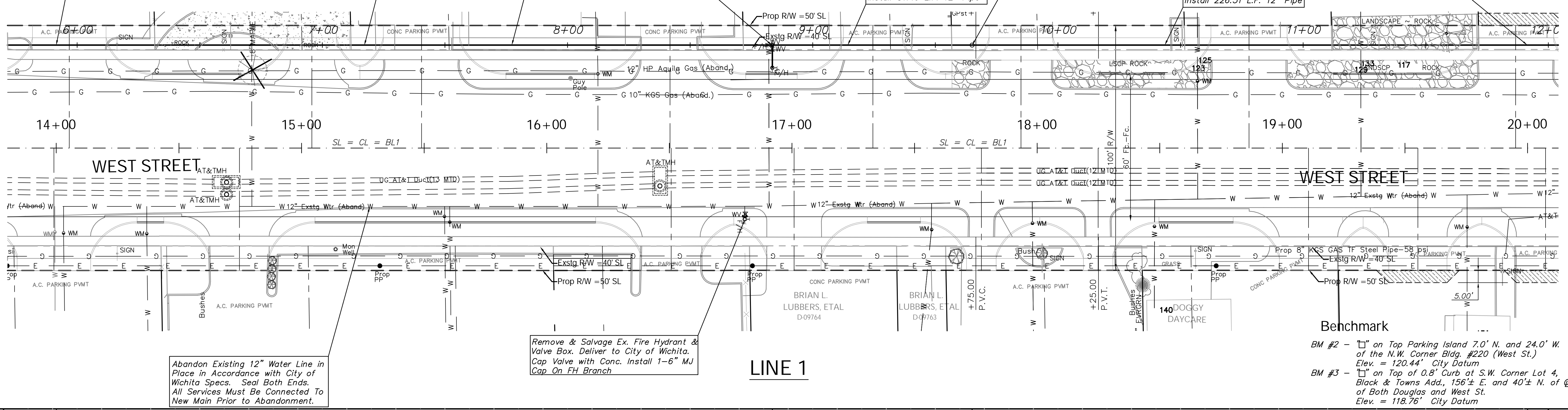
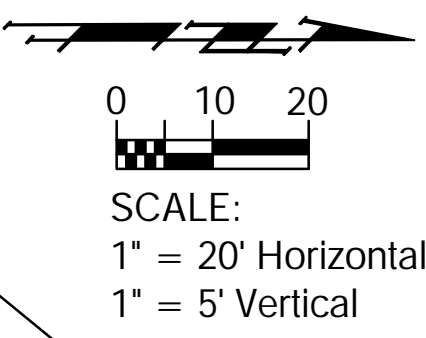
Install 292.00 L.F. 12" Pipe

W.L. Sta. 8+83.51, Line 1 =
B.L. 1 Sta. 16+92.00, 42.00' Lt.
Install 1-Fire Hydrant Assy. (E)
L = 9.50'
Valve Box Elev. 120.23 Top
Bury Line Elev. 119.64
Install 1-12" Valve Assy. (Butterfly Valve) (S)
Valve Box Elev. = 120.39 Top

W.L. Sta. 9+65.00, Line 1 =
B.L. Sta. 17+73.49, 42.00' Lt.
Install 1" Tap for Air Release.
Install 1-Air Release Assy.
See Air Release Detail on Water
Meter Table Sheet.
Top Elev. = 119.78

Note:
See Water Meter
Table For Service
Locations.

W.L. Sta. 11+91.51, Line 1 =
B.L. 1 Sta. 20+00.00 =
Match Point.



Abandon Existing 12" Water Line in
Place in Accordance with City of
Wichita Specs. Seal Both Ends.
All Services Must Be Connected To
New Main Prior to Abandonment.

Remove & Salvage Ex. Fire Hydrant &
Valve Box. Deliver to City of Wichita.
Cap Valve with Conc. Install 1-6" MJ
Cap On FH Branch

Benchmark
BM #2 - "I" on Top Parking Island 7.0' N. and 24.0' W.
of the N.W. Corner Bldg. #220 (West St.)
Elev. = 120.44' City Datum
BM #3 - "I" on Top of 0.8' Curb at S.W. Corner Lot 4,
Black & Towns Add., 156± E. and 40± N. of
of Both Douglas and West St.
Elev. = 118.76' City Datum

