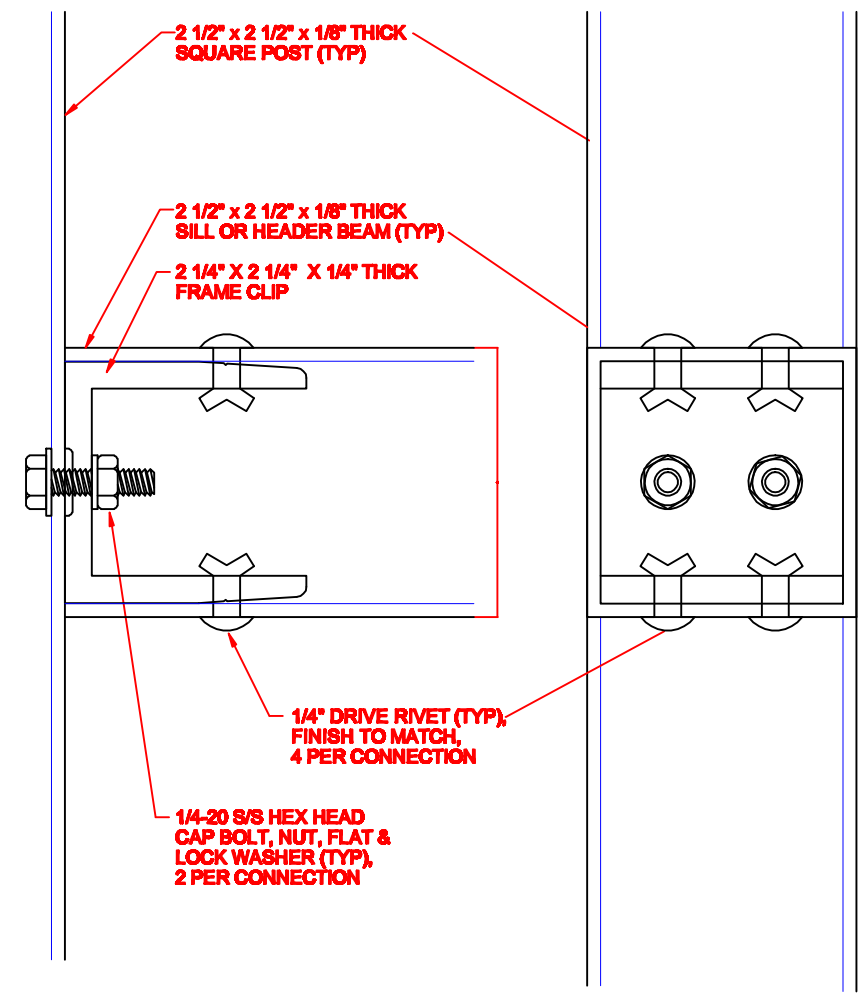


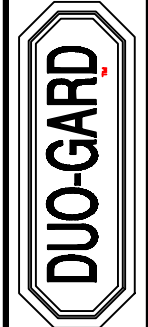
**GLAZING SASH DETAIL  
SECTION THROUGH CORNER POST AND MULLION**



**SECTION THROUGH SIDE                      SECTION THROUGH END**

**INTERNAL FRAME CLIP DETAIL**

Duo-Gard Industries, Inc.  
40442 Koppnick Road, Canton, MI 48187  
734/207-9700 fax 734/207-7995



This drawing is proprietary and for the sole use of our customer and may not be copied or reproduced without prior written consent from Duo-Gard Industries, Incorporated.

**MODULAR BUILDING DETAILS  
FRAME CLIP AND SASH DETAILS  
City of Wichita, KS**

DR BY: <b>B.D.I.</b>	SCALE: <b>1/2 scale</b>
DATE: <b>6-24-97</b>	REV:
SHEET <b>3</b> OF <b>6</b>	DWG# <b>1bus-a</b>



INSTALLATION ATTACHMENT D INSTRUCTIONS		
CITY ENGINEER <b>JAMES L. ARMOUR, P.E., L.S.</b>		
PROJECT NUMBER XXX-XXXX	QA NUMBER XXXXXX	DATE MM/YY
CITY ENGINEER'S OFFICE CITY HALL - SEVENTH FLOOR 305 NORTH MAIN STREET WICHITA, KANSAS 67202-1620 (316) 268-4501 (316) 268-4114 FAX	DESIGN N/A	DRAWN N/A
		SHEET D-24