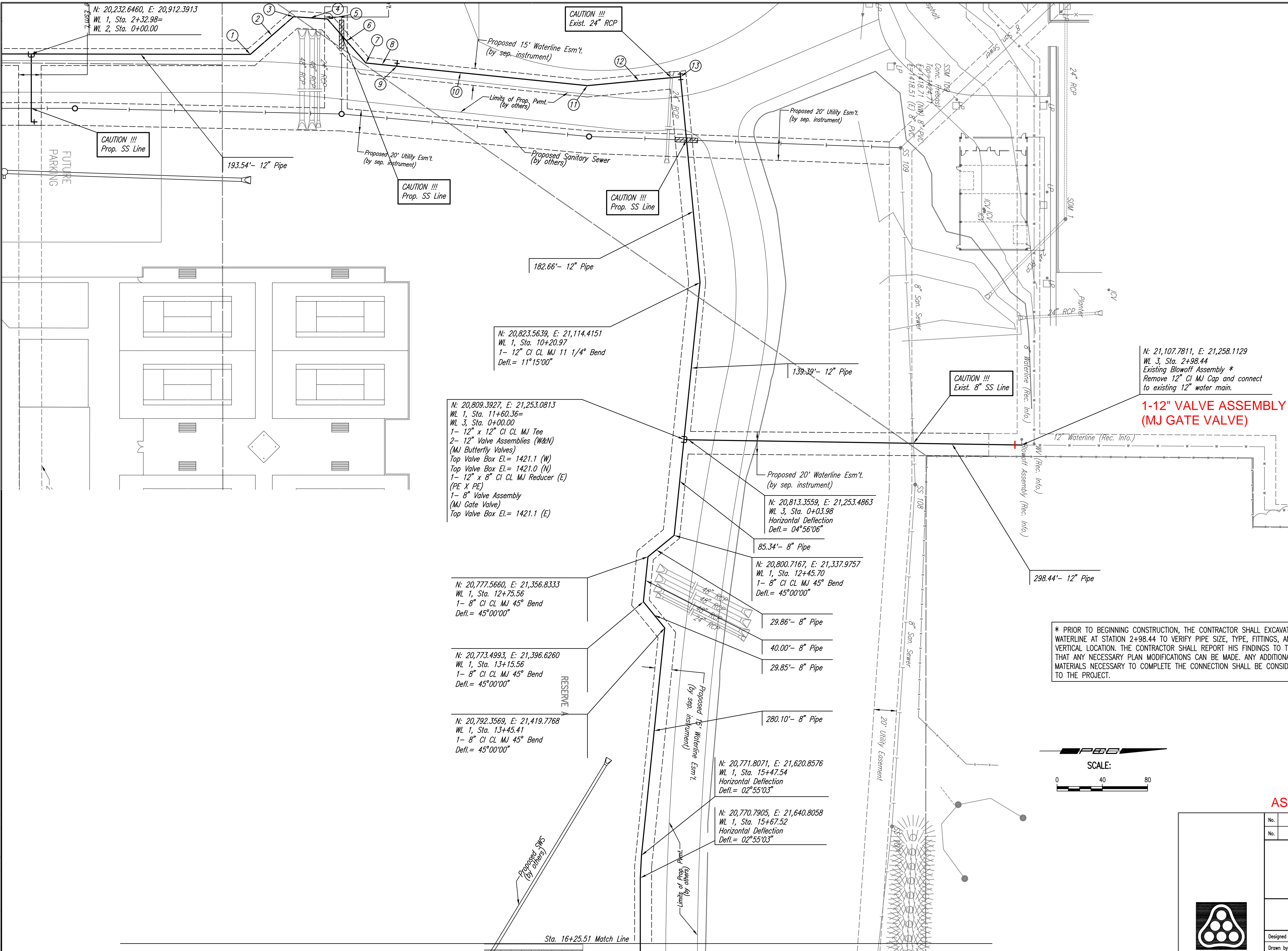
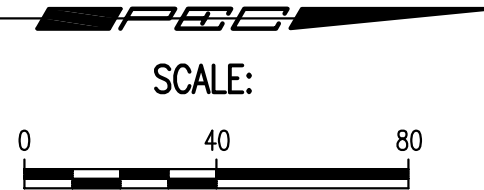


Saved: 01-06-2009 8:17:54 AM by RYM
 Plot Scale: 1/40 01-21-2009 1:19:37 PM by RYM
 01-2009 (08430) CHANGE ORDER (Change Order) T:\PPM\08430-C-604- WATER PLAN NORTH-CENTRAL



- ① N: 20,426.1917, E: 20,912.7555
 WL 1, Sta. 4+26.52
 1- 12" CI CL MJ 45° Bend
 Defl. = 41°16'06"
- ② 50.64'- 12" Pipe
- ③ N: 20,464.3170, E: 20,879.4257
 WL 1, Sta. 4+77.16
 1- 12" CI CL MJ 45° Bend
 Defl. = 45°00'00"
- ④ 30.00'- 12" Pipe
- ⑤ N: 20,494.2497, E: 20,881.4345
 WL 1, Sta. 5+07.16
 1- 12" CI CL MJ 45° Bend
 Defl. = 45°00'00"
- ⑥ 51.74'- 12" Pipe
- ⑦ N: 20,528.2996, E: 20,920.3834
 WL 1, Sta. 5+58.90
 1- 12" CI CL MJ 45° Bend
 Defl. = 43°00'15"
- ⑧ 27.48'- 12" Pipe
- ⑨ N: 20,555.6402, E: 20,923.1775
 WL 1, Sta. 5+86.38
 1- 12" x 12" CI CL MJ Tee
 1- 12" Anchored Valve Assembly (W)
 (MJ Butterfly Valve)
 Top Valve Box El. = 1428.7
 1- 12" CI MJ Plug (W)
- ⑩ 169.21'- 12" Pipe
- ⑪ N: 20,723.9698, E: 20,940.3803
 WL 1, Sta. 7+55.59
 1- 12" CI CL MJ 11 1/4° Bend
 Defl. = 11°15'00"
- ⑫ 82.72'- 12" Pipe
- ⑬ N: 20,806.3273, E: 20,932.5737
 WL 1, Sta. 8+38.31
 1- 12" x 12" CI CL MJ Tee
 (Key Block, Mega Lug)
 2- 12" Anchored Valve Assemblies (E&W)
 (MJ Butterfly Valves)
 Top Valve Box El. = 1424.7 (E)
 Top Valve Box El. = 1424.7 (W)
 1- 12" CI MJ Plug (W)

* PRIOR TO BEGINNING CONSTRUCTION, THE CONTRACTOR SHALL EXCAVATE THE EXISTING 12" WATERLINE AT STATION 2+98.44 TO VERIFY PIPE SIZE, TYPE, FITTINGS, AND HORIZONTAL AND VERTICAL LOCATION. THE CONTRACTOR SHALL REPORT HIS FINDINGS TO THE ENGINEER SO THAT ANY NECESSARY PLAN MODIFICATIONS CAN BE MADE. ANY ADDITIONAL LABOR OR MATERIALS NECESSARY TO COMPLETE THE CONNECTION SHALL BE CONSIDERED SUBSIDIARY TO THE PROJECT.



AS BUILT 4/15/2009

No.	Revision	By	Date
WATER DISTRIBUTION SYSTEM IMPROVEMENTS EISENHOWER MIDDLE SCHOOL - USD 265 GODDARD, KANSAS WATER LINE PLAN (NORTH-CENTRAL) JAMES L. ARMOUR, P.E. - CITY ENGINEER PRIVATE PROJECT NO. 1450 PPM (607853)			
Professional Engineering Consultants, P.A. 303 S. TOPEKA • WICHITA, KANSAS 67202 316-262-2691 • FAX 316-262-3003			
Designed by	RRY, MDK	Job No.	35-08430-259
Drawn by	TDS	Date	OCTOBER 2008
			Sht. C604

