

STORM WATER SEWER to serve EAST KELLOGG ACRES CITY OF WICHITA, KANSAS

James L. Armour, P.E. City Engineer

Project Number

1686 PPS

O.C.A. Number
607861

BENCHMARKS

BM #1: "□" chiseled on Top of West Curb between Lot 19 & 20 on Greenwich Rd.
Elev.= 160.72 (City Datum)

BM #2: "□" chiseled on Top of West Signal Pole Base in front of Lot 16 on Greenwich Rd.
Elev.= 158.51 (City Datum)

As Built Plans
(Line 3 Only)

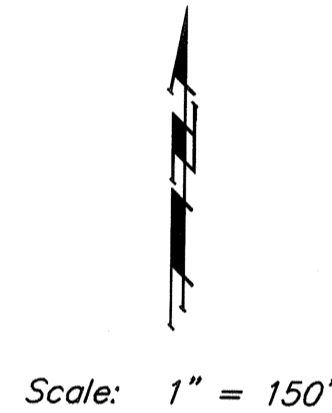
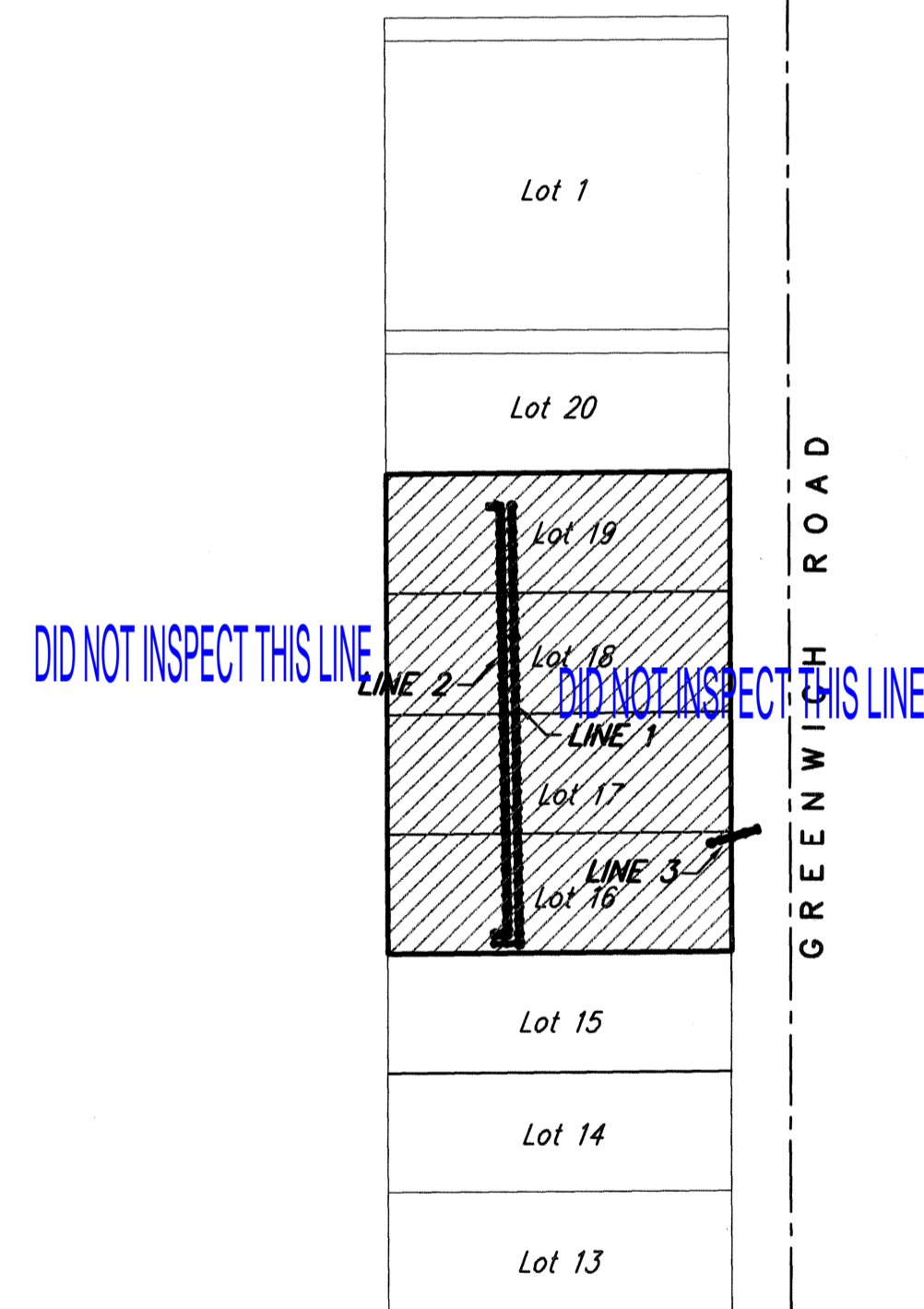
Contractor: Morgan-Off
Inspector: Lyle Powers, Baughman Co.
pdf's by: KEK, 3/3/09

APPROVED AS NOTED
BY CITY ENGINEER OF WICHITA

Storm Water Sewer *[Signature]* 7/29/08

NOTE TO CONTRACTORS
Installation, inspection, and testing for this project is to be provided by a Licensed Consulting Engineering Firm under contract with the Owner/Developer. Said inspection to be in accordance with the City of Wichita standard construction engineering practices and certified by a Licensed Professional Engineer. No work shall be performed in dedicated easements or public right-of-way by the Contractor without such inspection nor shall any work be commenced without written authorization by the City Engineer. All Construction and Materials shall comply with the City of Wichita Specifications and Standards (on file and available in the City Engineer's Office).

KELLOGG AVE ~ U.S. 54 HWY



GENERAL NOTES:

1. Contractor will be required to provide notice to utility companies a minimum of forty-eight (48) hours prior to any excavation, as follows:

Kansas One-Call 687-2470

The Contractor must notify the following in case of an emergency:

- Cox Communications 262-4270
- Kansas Gas Service 1-888-482-4950
- Westar Energy 383-8650
- Aquila Energy 1-800-303-0357
- SBC 268-2245
- City of Wichita Water Dept. 268-4563
- City of Wichita Sewer Maint. 268-4024
- City of Wichita Storm Sewer Maint. 268-4090
- City of Wichita Traffic Maint. 268-4034
- Conoco Phillips Pipeline 1-877-267-2290
- Southern Star Pipeline 529-6600
- Kinder Morgan Pipeline 1-888-844-5658

2. Utility service lines, poles, valve boxes, meters, and etcetera are to be adjusted as necessary by others prior to construction unless the plans specifically call for their adjustment by the Contractor or unless the plans specifically identify a utility to be adjusted by its owner during construction. Existing utilities and their location, as shown on the plans, represent the best information obtainable for design. The Contractor will be required to work around existing utilities within the right-of-way which do not conflict with proposed construction.

3. Rubble from the removal of miscellaneous structures and excess excavation which is to be wasted shall be disposed of on sites to be provided by the Contractor. These sites shall be approved by the Engineer as to suitability, appearance and site location. Locations, in the opinion of the Engineer, that will leave an unsightly appearance will not be approved. All disposal sites must be approved by the Kansas Department of Health and Environment. Material either stockpiled or disposed of in a flood plain would require a Kansas State Board of Agriculture permit. Any material dumped in waters of the United States or wetlands is subject to U.S. Corps of Engineers permitting regulations. Any material buried or stockpiled beyond approved construction limits would require additional archaeological investigations unless buried in a previously approved borrow location.

4. Trees and shrubs in public right-of-way which are in direct conflict with proposed new construction shall be removed by the Contractor with the Engineer's approval. Trees and shrubs which are not in direct conflict with proposed new construction shall be saved and protected from damage.

SHEET INDEX

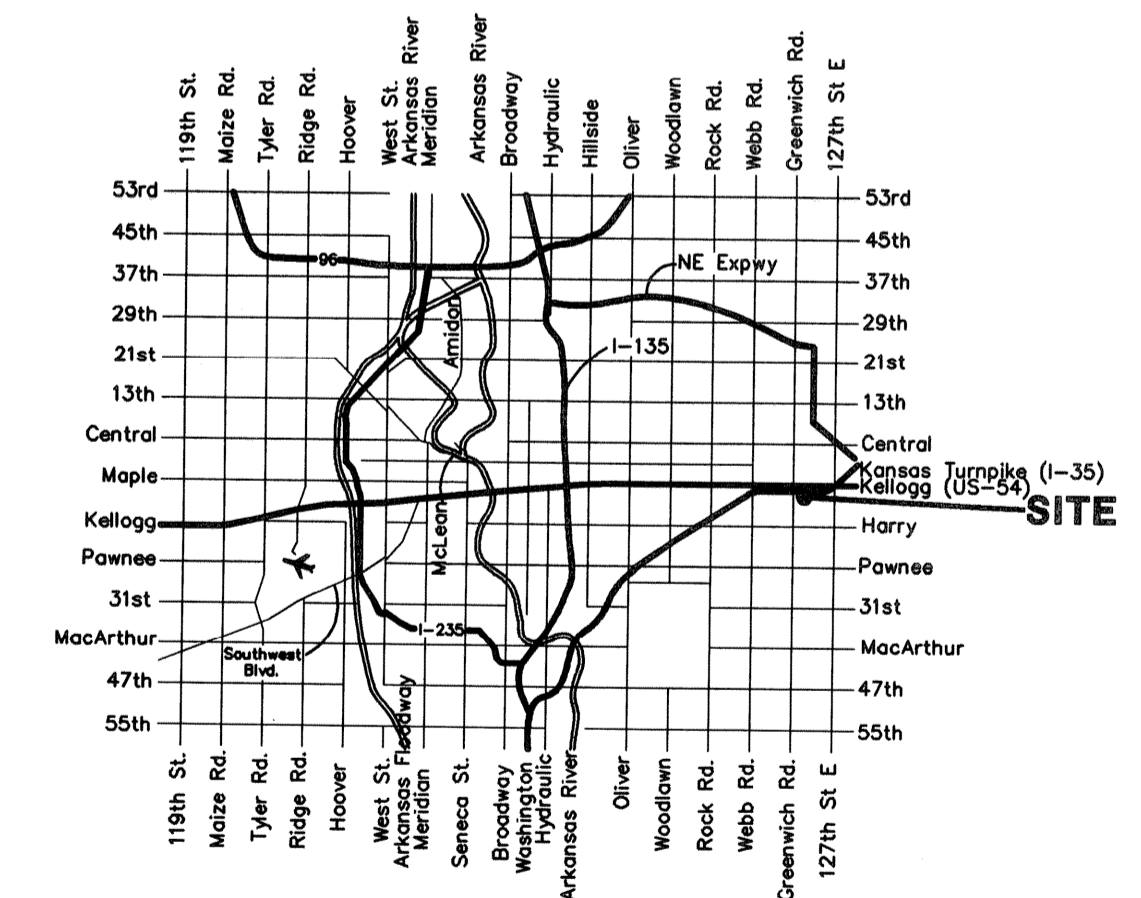
Title Sheet	1
SWS Line 1	2
SWS Line 2	3
SWS Line 3	4
Drop Inlet Detail	5

5. The Contractor shall be responsible for preserving property irons. The Contractor will be required to re-establish any property irons which are damaged or destroyed by his construction operations. Such irons shall be re-established by a licensed land surveyor in accordance with state laws.

6. All existing and proposed erosion control measures including silt fencing, erosion control mat, straw bales, inlet barriers, and const. entrance shall be maintained throughout construction by the contractor and until project is accepted by the City of Wichita. The on-site engineer shall complete weekly reports on the status of erosion control measures. The contractor shall be required to comply with maintenance and/or replacement of erosion control measures as determined by the on-site engineer until project is accepted by City of Wichita. Maintenance and/or replacement of erosion control measures to be paid by L.S. bid item "Site Clearing & Restoration."

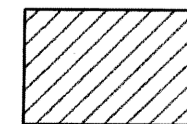
7. All excess excavation shall remain on-site and shall be stockpiled or spread at a location determined by the engineer.

8. All areas disturbed during construction shall be seeded at 300 lbs./acre with Rye Grass immediately following construction in that area. Contractor shall prepare ground per City Specifications.



Vicinity Map

Benefit District



Baughman Company, P.A. 315 Ellis St. Wichita, KS 67211 P 316-262-7271 F 316-262-0145
ENGINEERING | SURVEYING | PLANNING | LANDSCAPE ARCHITECTURE