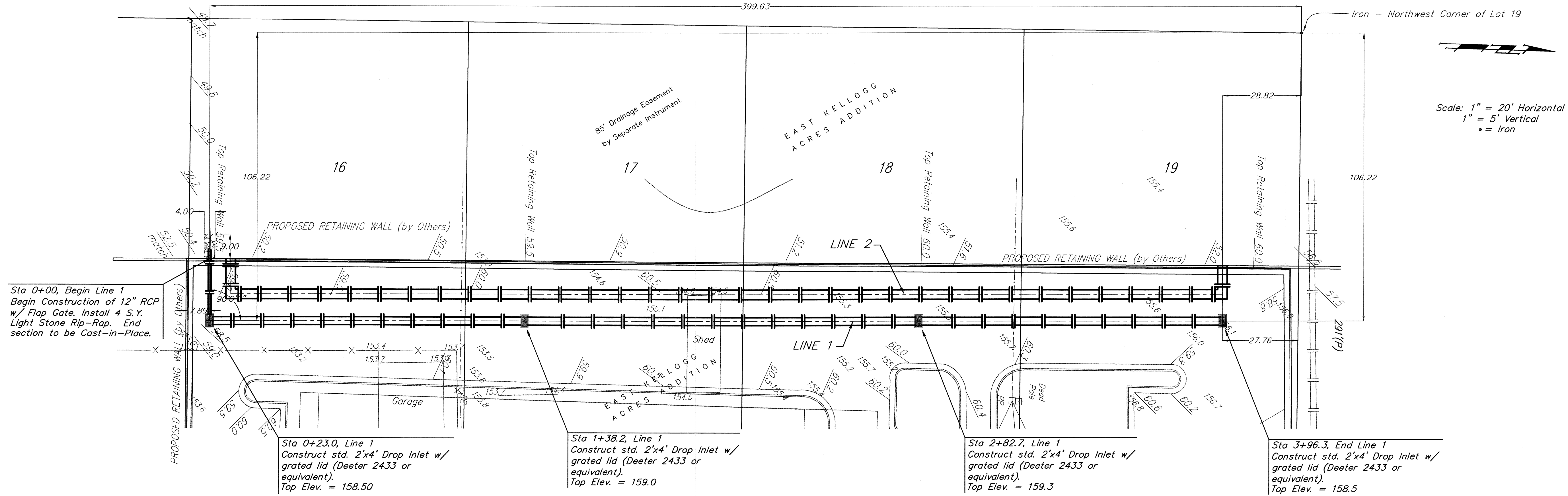


BENCHMARKS:

BM #1: "□" chiseled on Top of West Curb between Lot 19 & 20 on Greenwich Rd.
Elev. = 160.72 (City Datum)

BM #2: "□" chiseled on Top of West Signal Pole Base in front of Lot 16 on Greenwich Rd.
Elev. = 158.51 (City Datum)



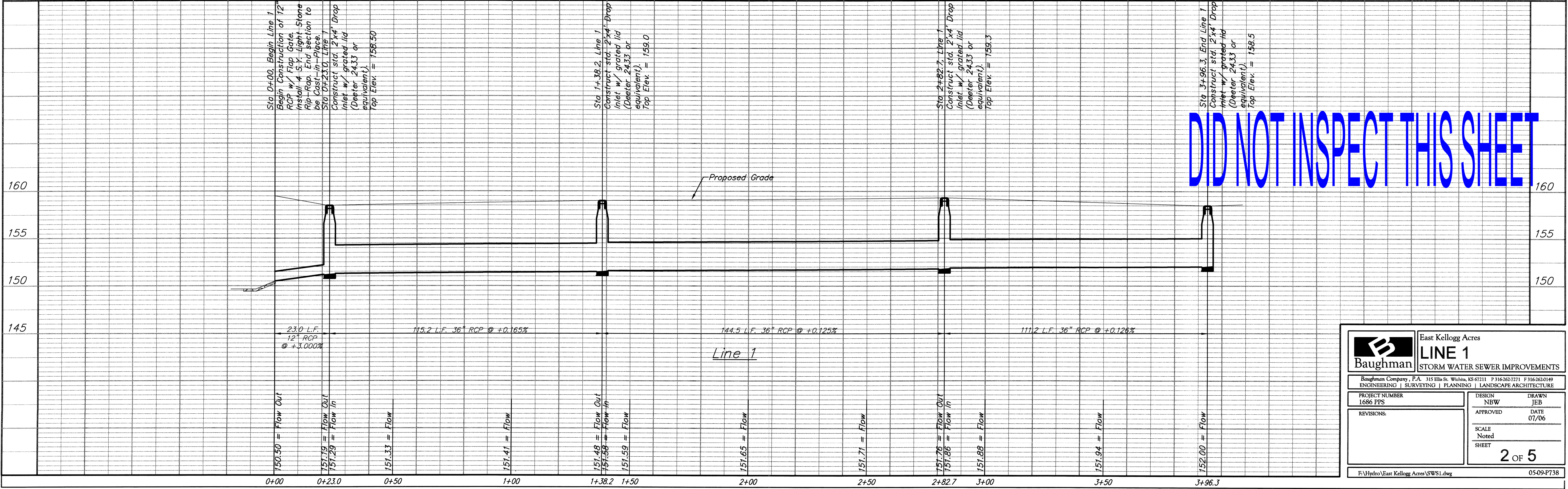
Sta 0+00, Begin Line 1
Begin Construction of 12" RCP w/ Flap Gate. Install 4 S.Y. Light Stone Rip-Rap. End section to be Cast-in-Place.

Sta 0+23.0, Line 1
Construct std. 2'x4' Drop Inlet w/ grated lid (Deeter 2433 or equivalent).
Top Elev. = 158.50

Sta 1+38.2, Line 1
Construct std. 2'x4' Drop Inlet w/ grated lid (Deeter 2433 or equivalent).
Top Elev. = 159.0

Sta 2+82.7, Line 1
Construct std. 2'x4' Drop Inlet w/ grated lid (Deeter 2433 or equivalent).
Top Elev. = 159.3

Sta 3+96.3, End Line 1
Construct std. 2'x4' Drop Inlet w/ grated lid (Deeter 2433 or equivalent).
Top Elev. = 158.5



DID NOT INSPECT THIS SHEET

B Baughman		East Kellogg Acres LINE 1 STORM WATER SEWER IMPROVEMENTS	
Baughman Company, P.A. 315 Ellis St. Wichita, KS 67211 P 316-363-7271 F 316-363-6149 ENGINEERING SURVEYING PLANNING LANDSCAPE ARCHITECTURE			
PROJECT NUMBER 1686 PPS	DESIGN NBW	DRAWN JEB	
REVISIONS:	APPROVED	DATE 07/06	
	SCALE Noted	SHEET	2 OF 5
F:\Hydro\East Kellogg Acres\SWS1.dwg			05-09-P738