

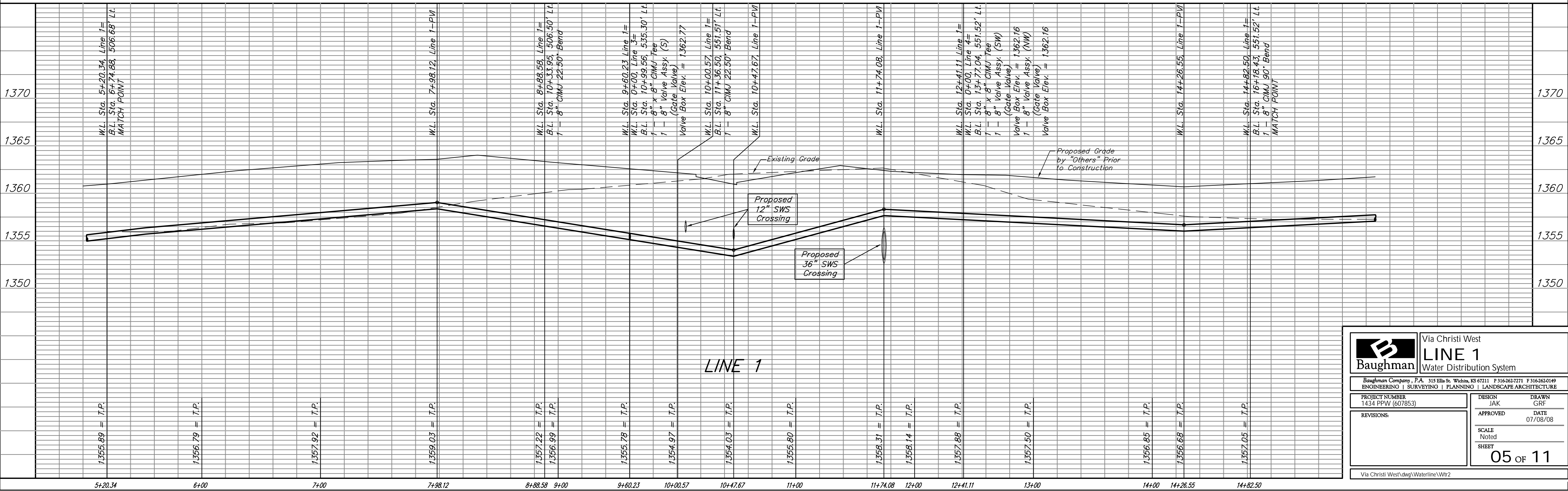
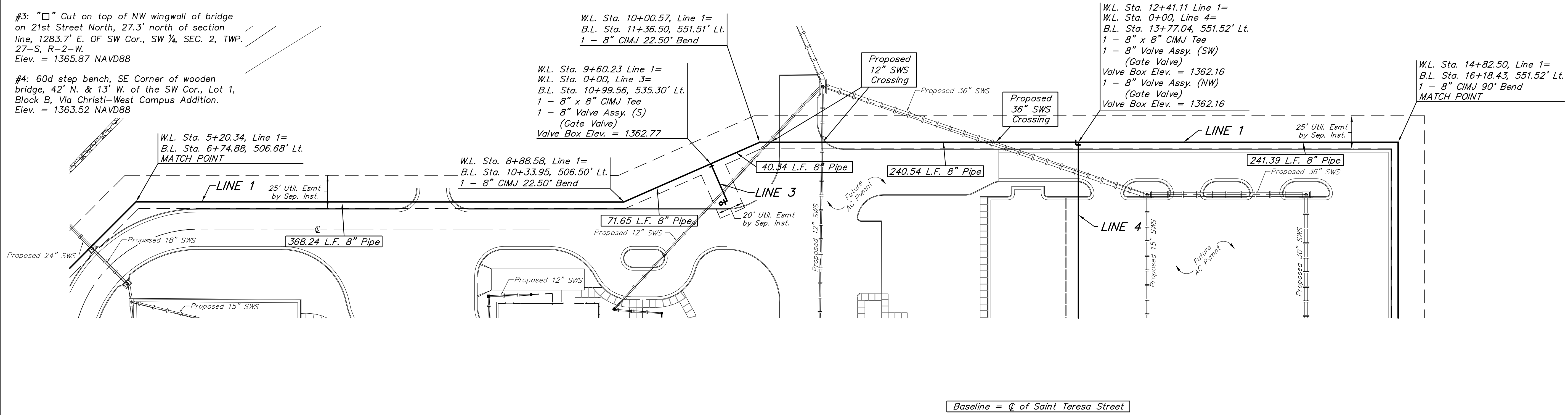
BENCHMARK:
 #1: Top of 2" steel "T" post, 0.5'± deep, 10' West & 7' North of property corner.
 Elev. = 1360.75 NAVD88

#2: 3/4" Iron pipe with Sedgwick County Cap in concrete at the SW Cor., SW 1/4, Sec. 2, TWP. 27-S, R-2-W.
 Elev. = 1367.00 NAVD88

#3: "□" Cut on top of NW wingwall of bridge on 21st Street North, 27.3' north of section line, 1283.7' E. OF SW Cor., SW 1/4, SEC. 2, TWP. 27-S, R-2-W.
 Elev. = 1365.87 NAVD88

#4: 60d step bench, SE Corner of wooden bridge, 42' N. & 13' W. of the SW Cor., Lot 1, Block B, Via Christi-West Campus Addition.
 Elev. = 1363.52 NAVD88

Scale: 1" = 40' Horizontal
 1" = 5' Vertical
 • = Iron



Baughman Via Christi West LINE 1 Water Distribution System			
		<small>ENGINEERING SURVEYING PLANNING LANDSCAPE ARCHITECTURE</small>	
<small>PROJECT NUMBER 1434 PPW (607853)</small>		<small>DESIGN JAK</small>	
<small>REVISIONS:</small>		<small>DRAWN GRF</small>	
<small>APPROVED</small>		<small>DATE 07/08/08</small>	
<small>SCALE Noted</small>		<small>SHEET 05 OF 11</small>	
<small>Via Christi West\dwg\Waterline\Wtr2</small>			