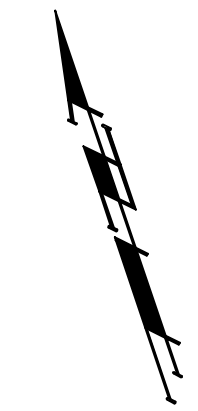
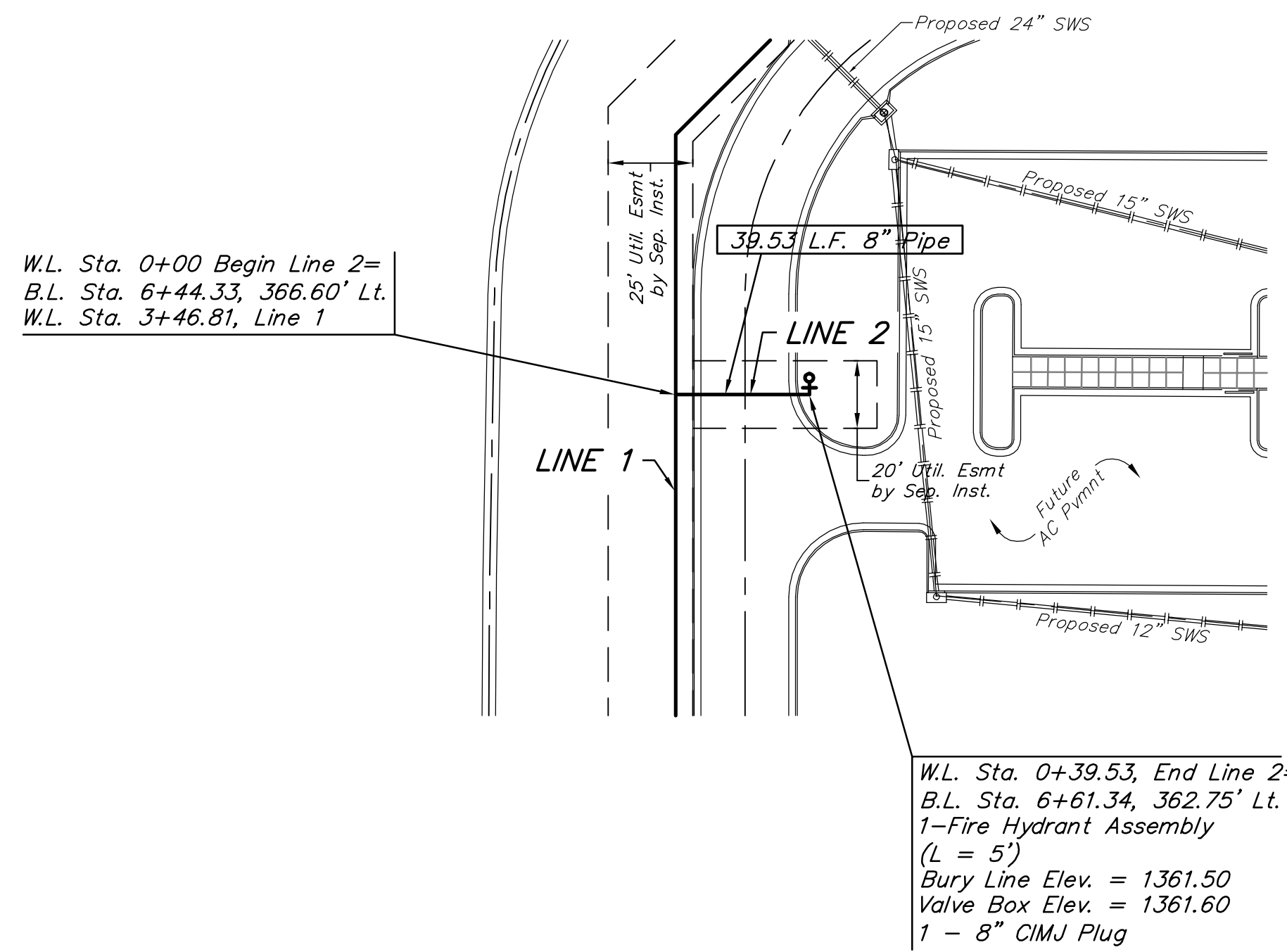


- BENCHMARK:**
 #1: Top of 2" steel "T" post, 0.5'± deep, 10' West & 7' North of property corner.
 Elev. = 1360.75 NAVD88
- #2: 3/4" Iron pipe with Sedgwick County Cap in concrete at the SW Cor., SW 1/4, Sec. 2, TWP. 27-S, R-2-W.
 Elev. = 1367.00 NAVD88
- #3: " " Cut on top of NW wingwall of bridge on 21st Street North, 27.3' north of section line, 1283.7' E. OF SW Cor., SW 1/4, SEC. 2, TWP. 27-S, R-2-W.
 Elev. = 1365.87 NAVD88
- #4: 60d step bench, SE Corner of wooden bridge, 42' N. & 13' W. of the SW Cor., Lot 1, Block B, Via Christi-West Campus Addition.
 Elev. = 1363.52 NAVD88



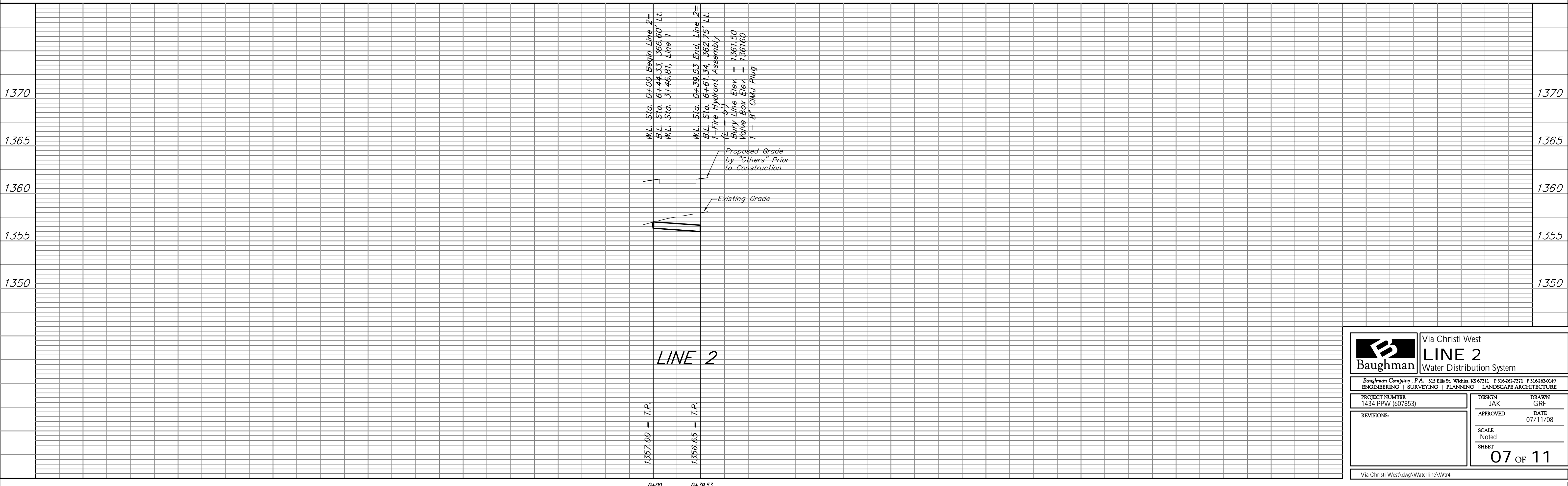
Scale: 1" = 40' Horizontal
 1" = 5' Vertical
 • = Iron




W.L. Sta. 0+00 Begin Line 2=
 B.L. Sta. 6+44.33, 366.60' Lt.
 W.L. Sta. 3+46.81, Line 1

W.L. Sta. 0+39.53, End Line 2=
 B.L. Sta. 6+61.34, 362.75' Lt.
 1-Fire Hydrant Assembly
 (L = 5')
 Bury Line Elev. = 1361.50
 Valve Box Elev. = 1361.60
 1 - 8" CIMJ Plug

Baseline = ϕ of Saint Teresa Street



		Via Christi West LINE 2 Water Distribution System	
<small>Baughman Company, P.A. 315 Ellis St. Wichita, KS 67211 P 316-262-7271 F 316-262-0149 ENGINEERING SURVEYING PLANNING LANDSCAPE ARCHITECTURE</small>			
PROJECT NUMBER 1434 PPW (607853)		DESIGN JAK DRAWN GRF APPROVED DATE 07/11/08	
REVISIONS:		SCALE Noted SHEET 07 OF 11	
<small>Via Christi West\dwg\Waterline\Wtr4</small>			