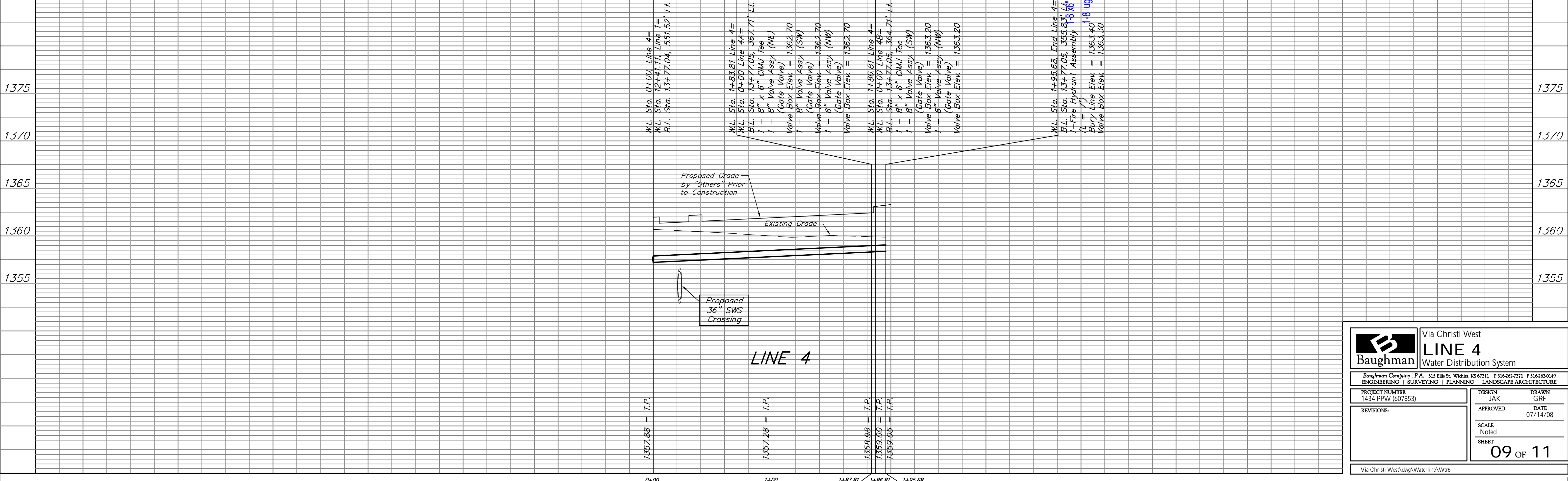
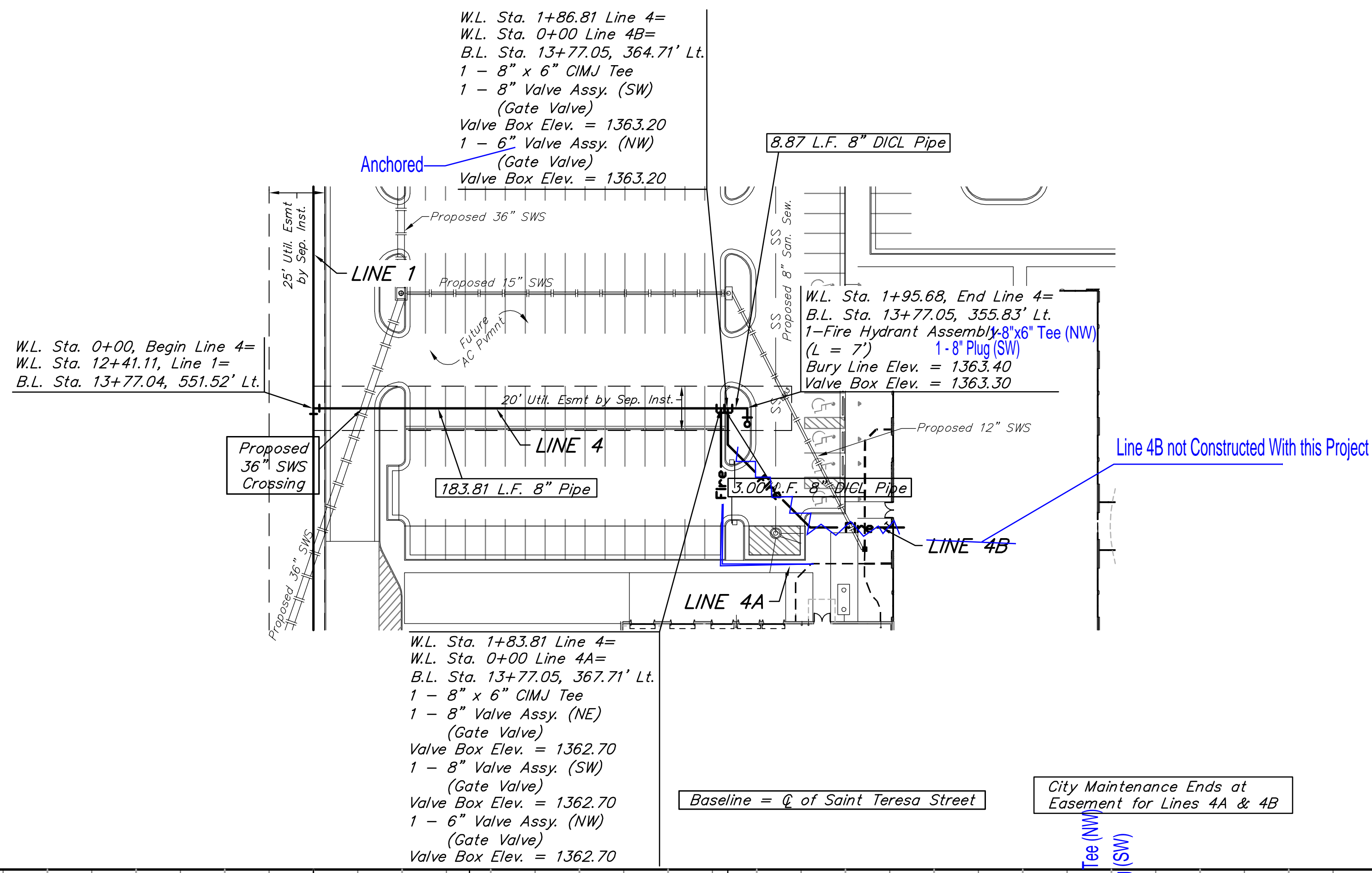
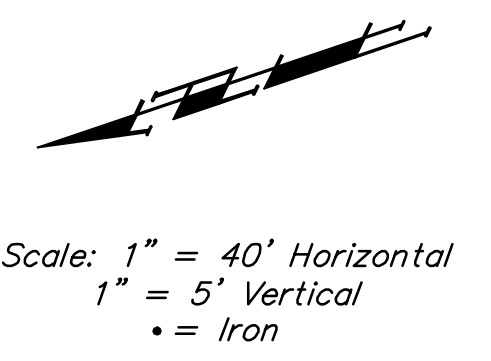


**BENCHMARK:**  
 #1: Top of 2" steel "T" post, 0.5'± deep, 10' West & 7' North of property corner.  
 Elev. = 1360.75 NAVD88

#2: 3/4" Iron pipe with Sedgwick County Cap in concrete at the SW Cor., SW 1/4, Sec. 2, TWP. 27-S, R-2-W.  
 Elev. = 1367.00 NAVD88

#3: " " Cut on top of NW wingwall of bridge on 21st Street North, 27.3' north of section line, 1283.7' E. OF SW Cor., SW 1/4, SEC. 2, TWP. 27-S, R-2-W.  
 Elev. = 1365.87 NAVD88

#4: 60d step bench, SE Corner of wooden bridge, 42' N. & 13' W. of the SW Cor., Lot 1, Block B, Via Christi-West Campus Addition.  
 Elev. = 1363.52 NAVD88



		Via Christi West	
		<b>LINE 4</b>	
Baughman Company, P.A. 315 Ellis St. Wichita, KS 67211 P 316-262-7271 F 316-262-0149		ENGINEERING   SURVEYING   PLANNING   LANDSCAPE ARCHITECTURE	
PROJECT NUMBER 1434 PPW (607853)	DESIGN JAK	DRAWN GRF	APPROVED DATE 07/14/08
REVISIONS:	SCALE Noted		
		SHEET <b>09 OF 11</b>	
Via Christi West\dwg\Waterline\Wtr6			