

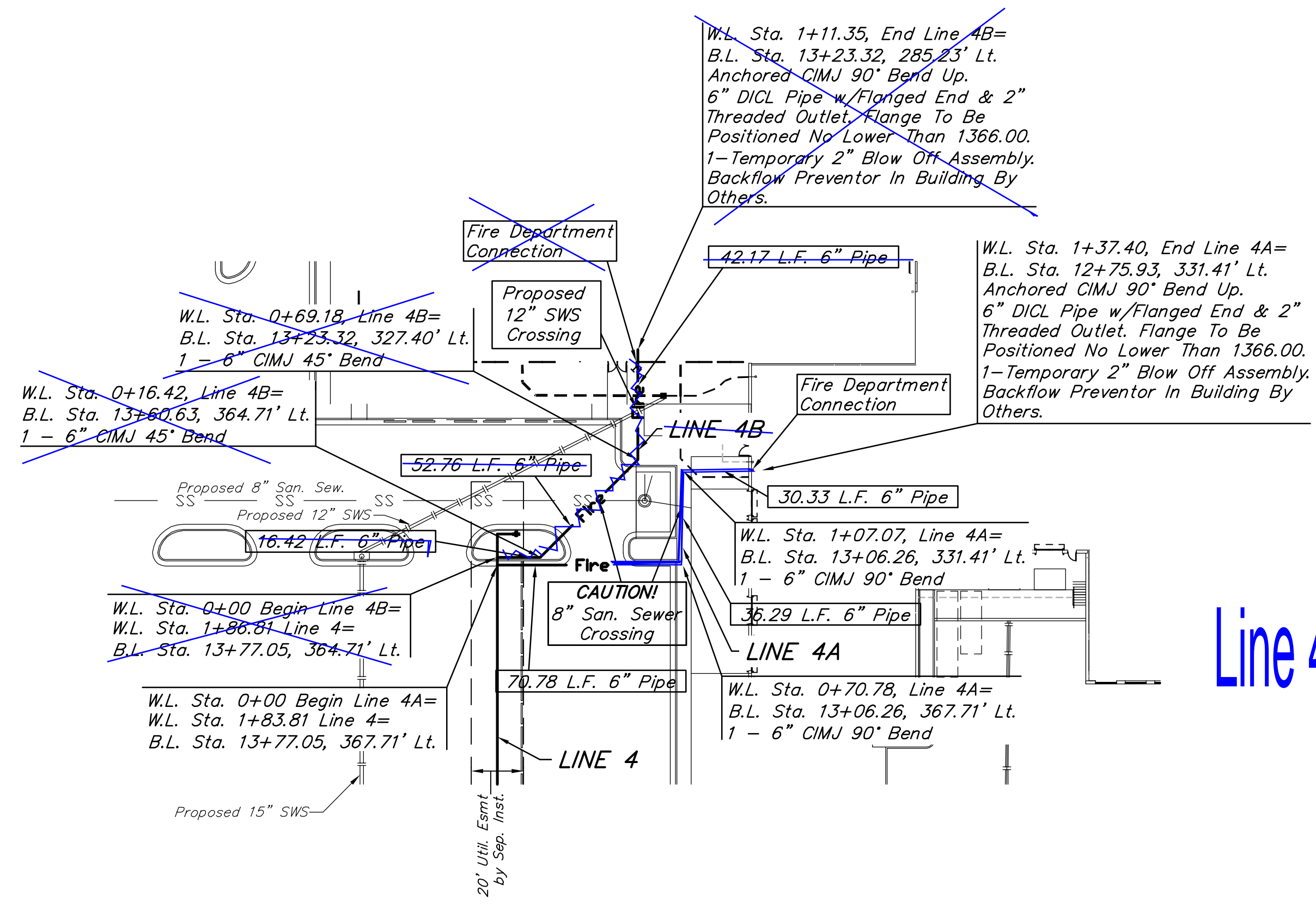
BENCHMARK:
 #1: Top of 2" steel "T" post, 0.5'± deep, 10' West & 7' North of property corner.
 Elev. = 1360.75 NAVD88

#2: 3/4" Iron pipe with Sedgwick County Cap in concrete at the SW Cor., SW 1/4, Sec. 2, TWP. 27-S, R-2-W.
 Elev. = 1367.00 NAVD88

#3: " " Cut on top of NW wingwall of bridge on 21st Street North, 27.3' north of section line, 1283.7' E. OF SW Cor., SW 1/4, SEC. 2, TWP. 27-S, R-2-W.
 Elev. = 1365.87 NAVD88

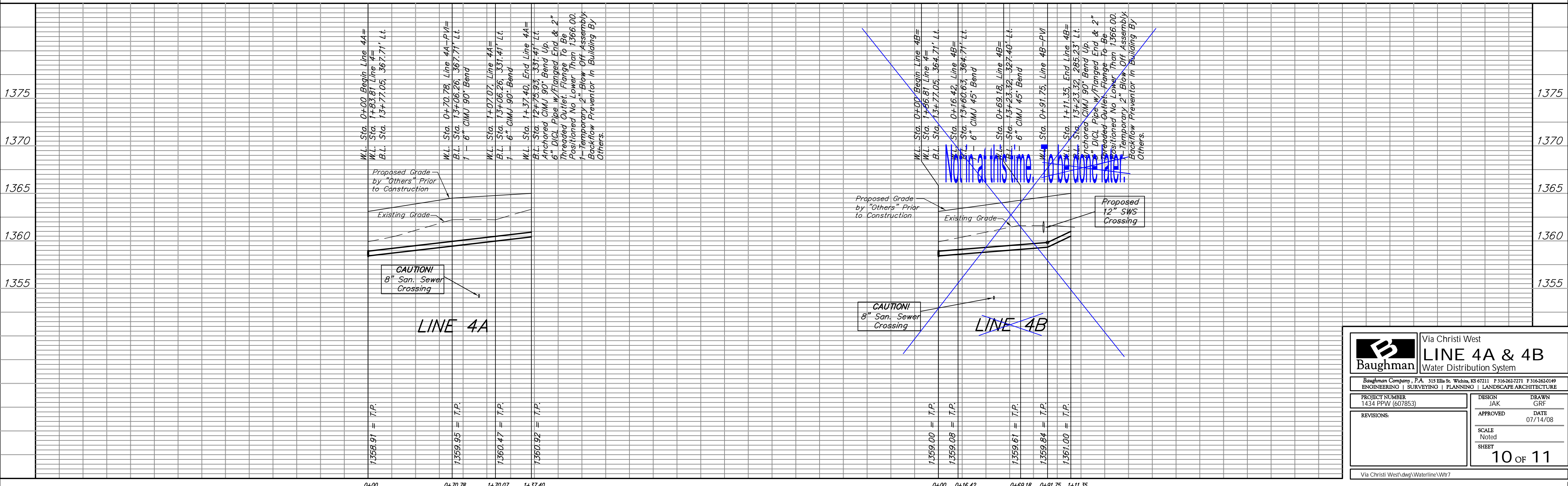
#4: 60d step bench, SE Corner of wooden bridge, 42' N. & 13' W. of the SW Cor., Lot 1, Block B, Via Christi-West Campus Addition.
 Elev. = 1363.52 NAVD88

Scale: 1" = 40' Horizontal
 1" = 5' Vertical
 • = Iron



Line 4B not done with this project

Baseline = Q of Saint Teresa Street
 City Maintenance Ends at Easement for Lines 4A & 4B



		Via Christi West	
		LINE 4A & 4B	
Water Distribution System		<small>Baughman Company, P.A. 315 Ellis St. Wichita, KS 67211 P 316-262-7771 F 316-262-0149 ENGINEERING SURVEYING PLANNING LANDSCAPE ARCHITECTURE</small>	
PROJECT NUMBER 1434 PPW (607853)	DESIGN JAK	DRAWN GRF	APPROVED DATE 07/14/08
REVISIONS:	SCALE Noted	SHEET 10 OF 11	
Via Christi West\dwg\Waterline\Wtr7			