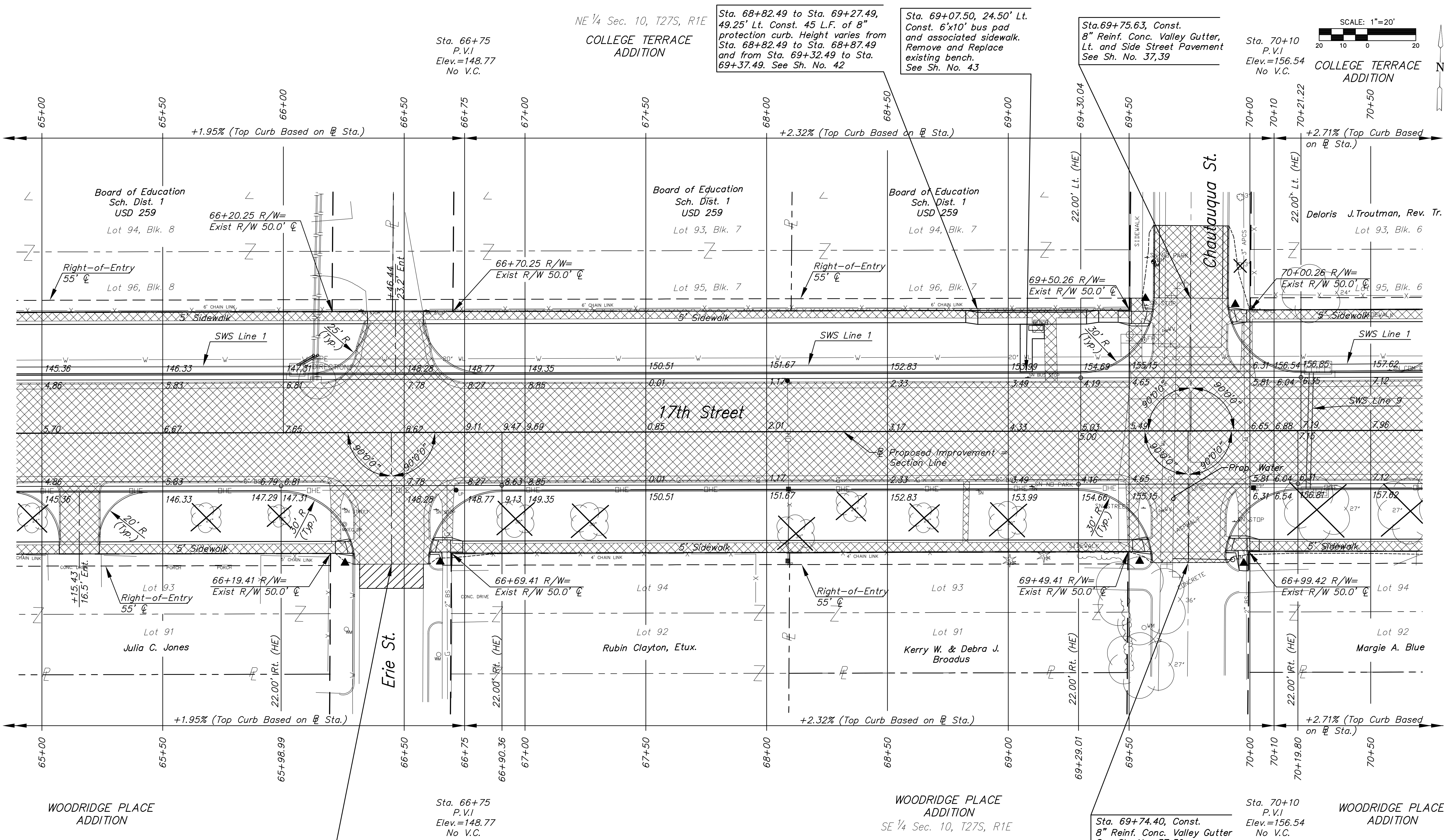


NE 1/4 Sec. 10, T27S, R1E
COLLEGE TERRACE ADDITION



Sta. 66+75
P.V.I
Elev.=148.77
No V.C.

Sta. 68+82.49 to Sta. 69+27.49,
49.25' Lt. Const. 45 L.F. of 8"
protection curb. Height varies from
Sta. 68+82.49 to Sta. 68+87.49
and from Sta. 69+32.49 to Sta.
69+37.49. See Sh. No. 42

Sta. 69+07.50, 24.50' Lt.
Const. 6'x10' bus pad
and associated sidewalk.
Remove and Replace
existing bench.
See Sh. No. 43

Sta. 69+75.63, Const.
8" Reinf. Conc. Valley Gutter,
Lt. and Side Street Pavement
See Sh. No. 37,39

Sta. 70+10
P.V.I
Elev.=156.54
No V.C.

Sta. 66+44.68, Const.
8" Reinf. Conc. Valley Gutter
See Sh. No. 37,39

Sta. 69+74.40, Const.
8" Reinf. Conc. Valley Gutter
See Sh. No. 37,39

Sta. 70+10
P.V.I
Elev.=156.54
No V.C.

UTILITY ADJUSTMENTS				
STATION	OFFSET	EXISTING ELEVATION	PROPOSED ELEVATION	REMARKS
69+56.46	37.6' Lt.	156.28	-	Remove Fire Hydrant
69+63.34	33.1' Rt.	155.17	-	Abandon/Remove WV Box
69+64.89	41.4' Lt.	155.98	-	Abandon/Remove WV Box

- LEGEND**
- Asphalt Hookup
 - Pavement/Walk Removal
 - Construct Wheelchair Ramp See Sh. No. No. 44

17th STREET FROM GROVE TO HILLSIDE

PAVING PLAN
Sta. 65+00
to
Sta. 70+50
SHEET TITLE
87 N-0349-01
PROJECT NUMBER

JRA
DESIGN BY
JSB
DRAWN BY
JRA
CHECKED BY

ISSUED
May 28, 2009
REVISED

SHEET NO.
8 of 133