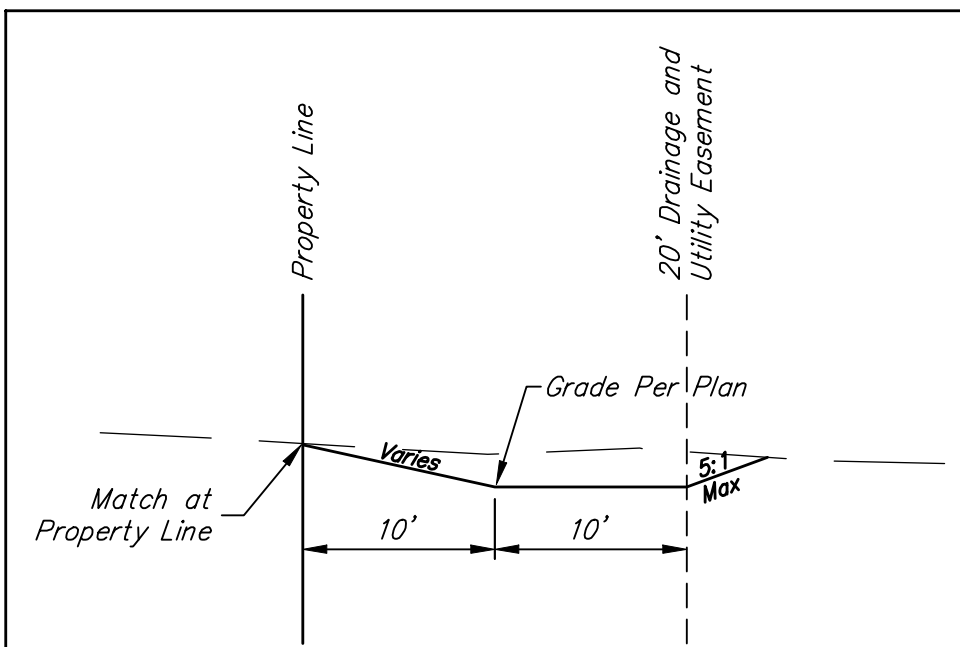


BENCHMARKS:

BM #1: CITY OF WICHITA BENCHMARK
DISC, 48.5' W. & 28' N. OF E 21ST
STREET NORTH AND HOOVER STREET.
ELEV. = 1326.47 NGVD29

BM #2: RAIL ROAD SPIKE IN POWER
POLE 28' N. OF E OF 21ST STREET
NORTH ALONG THE WEST LINE OF THE
PLAT.
ELEV. = 1327.25 NGVD29



**EASEMENT GRADING
TYPICAL SECTION**

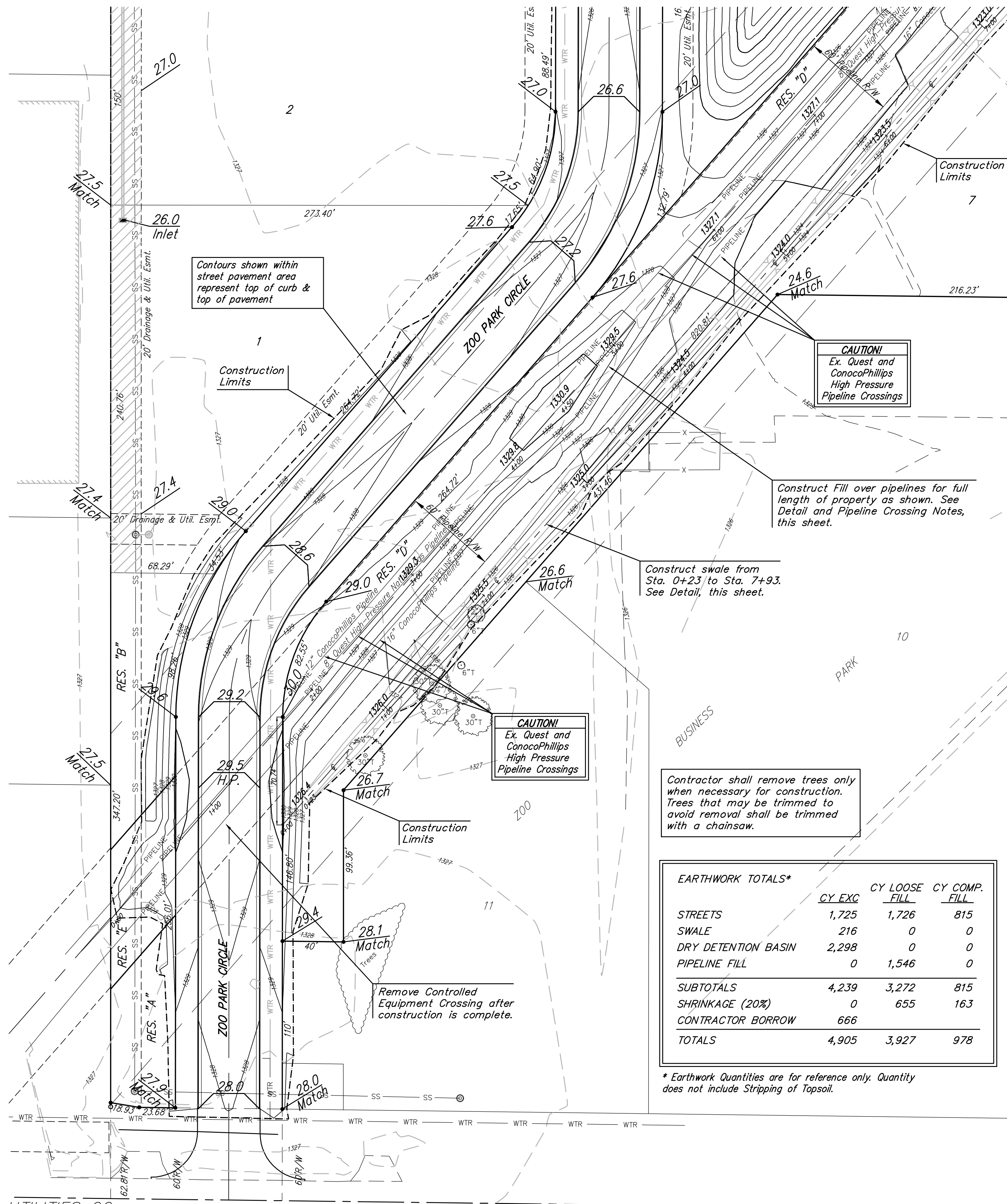
Note: Excess Earth from Easement Grading to be spread on adjacent Lots.

*** Pipeline Crossing Notes:**

1. No Construction Equipment or Operations shall be allowed within ConocoPhillips or Quest Pipeline Right-of-way without first contacting a representative from both pipeline companies, a minimum of 48 hours prior to beginning construction.
2. Contractor and all sub-contractors shall be required to attend a safety meeting with pipeline personnel prior to any mobilization.
3. All construction work within or around the Pipeline Easement shall be done Monday through Friday.
4. Contractor shall coordinate all construction within Pipeline R/W with each Pipeline Company through Kansas One-Call. Contact the following in case of an emergency:
Quest: Joe Fowler (316) 764-6015
ConocoPhillips: J.R. McCaffree (316) 838-3411
5. Fill placed within the pipeline easement shall be done using the following procedure. Dump or pile the fill dirt to the side of the pipelines and blade over and onto the gas lines using a dozer. No scraper or tractor with pans will be used to install fill material directly over the gas lines. Once the 4 feet of fill material has been roughed in with a dozer, a motor grader can be used to cut the dirt to finish grade in the area of the pipelines.
6. All equipment crossing locations shall be approved by Quest and ConocoPhillips prior to any equipment crossing the pipeline easement.

GENERAL NOTES:

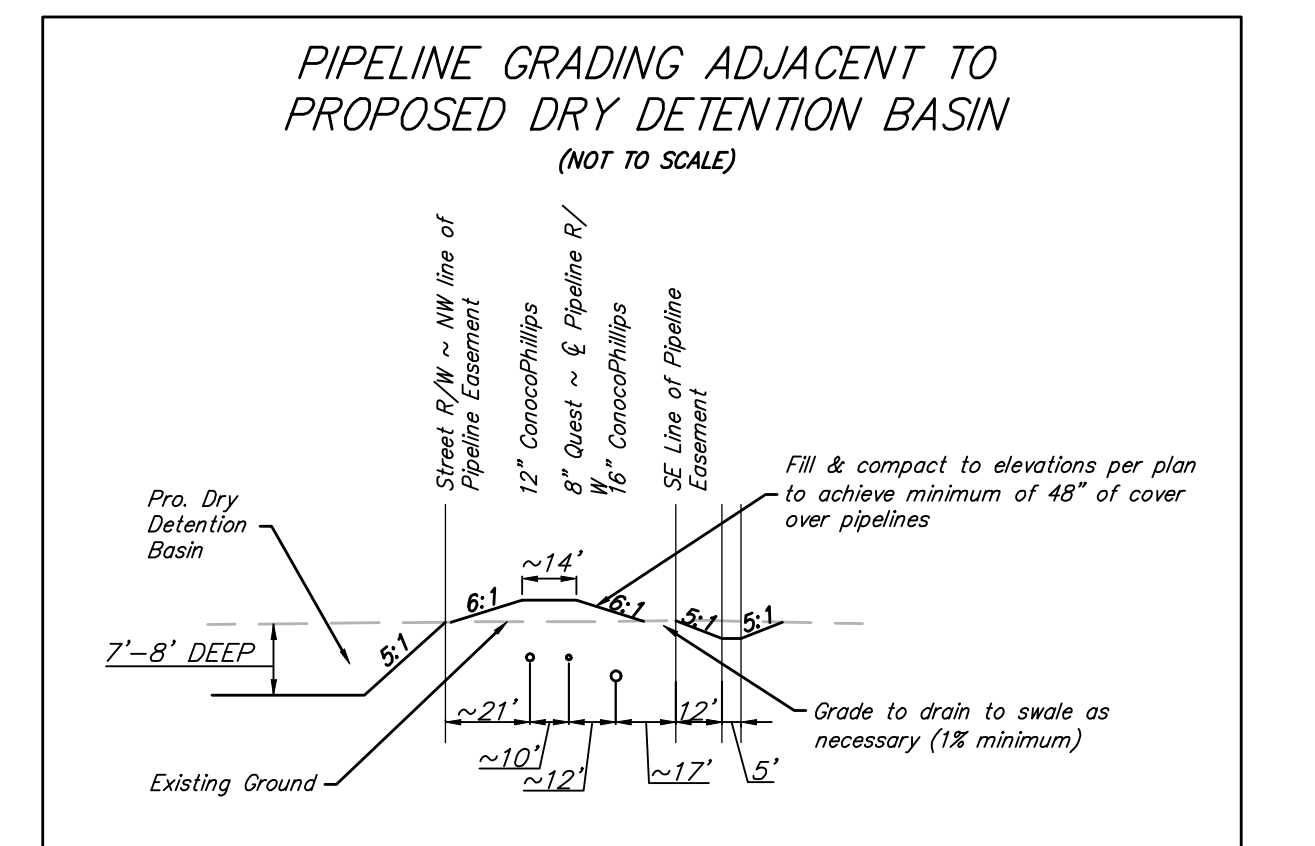
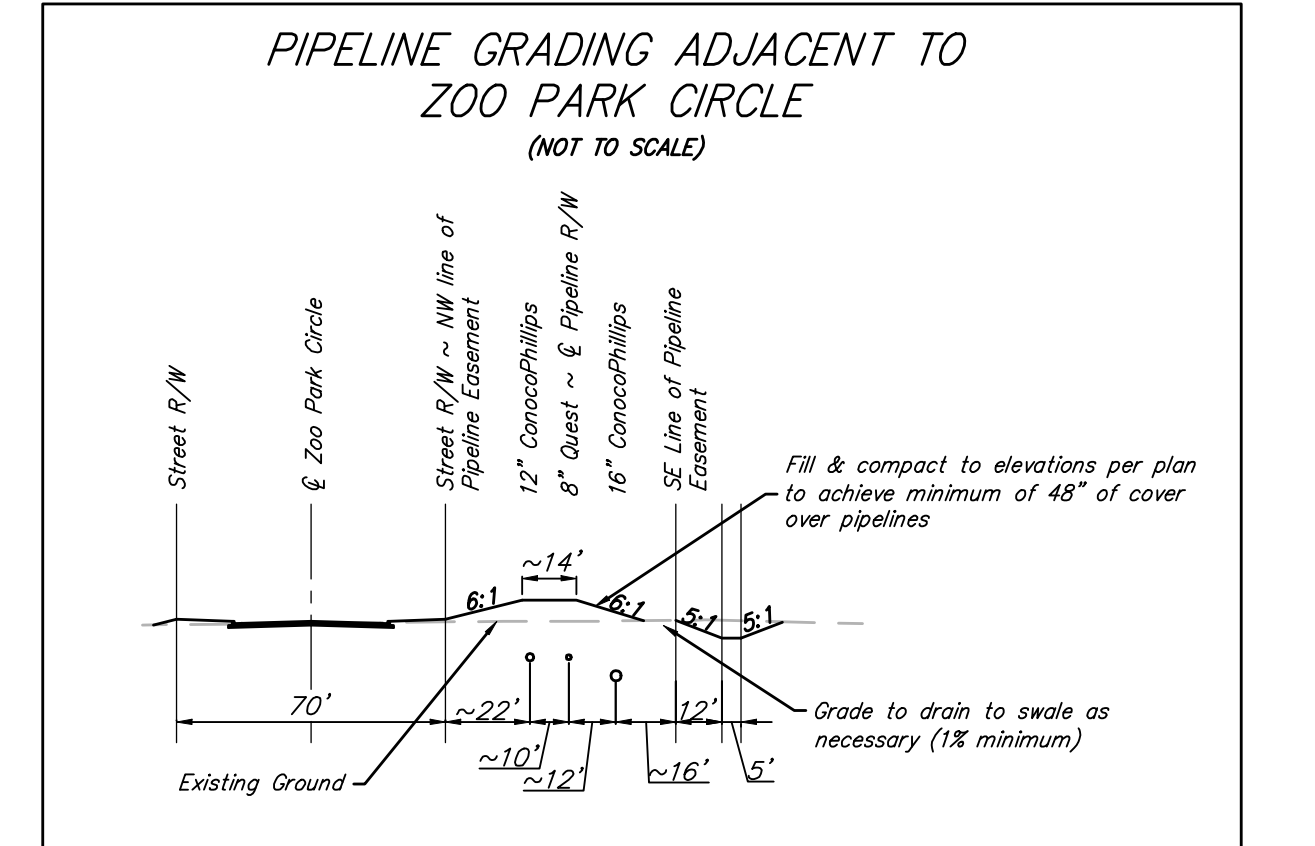
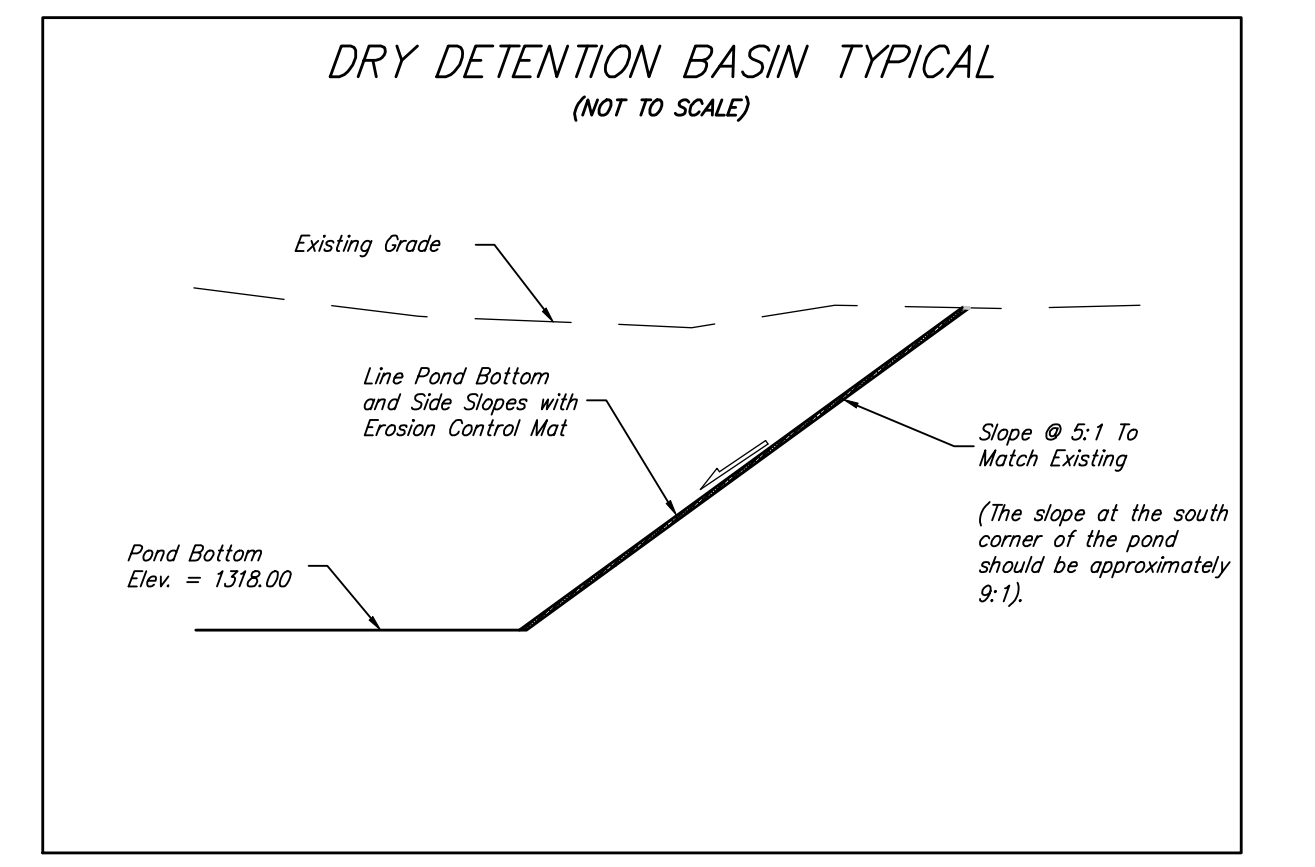
1. Compaction of 95% of maximum standard proctor density shall be obtained in all street R/Ws, 90% in all other areas unless otherwise noted.
2. It shall be the Contractor's responsibility to protect any existing utilities during mass grading. Any damage done to these systems by Contractor or subcontractor shall be repaired at no additional cost to the project.



LEGEND

Existing Contour
Proposed Contour
Easement Grading

Scale: 1" = 40'
• = Iron



EARTHWORK TOTALS*

	CY EXC	CY LOOSE FILL	CY COMP. FILL
STREETS	1,725	1,726	815
SWALE	216	0	0
DRY DETENTION BASIN	2,298	0	0
PIPELINE FILL	0	1,546	0
SUBTOTALS	4,239	3,272	815
SHRINKAGE (20%)	0	655	163
CONTRACTOR BORROW	666		
TOTALS	4,905	3,927	978

* Earthwork Quantities are for reference only. Quantity does not include Stripping of Topsoil.

Baughman COX MACHINE 3RD ADDITION
SITE GRADING
STREET IMPROVEMENTS

Baughman Company, P.A. 315 Ellis St. Wichita, KS 67211 P 316-262-7271 F 316-532-0149
ENGINEERING | SURVEYING | PLANNING | LANDSCAPE ARCHITECTURE

PROJECT NUMBER: 472-84820
DESIGN: AEG
DRAWN: AEG
APPROVED: AEG
DATE: 6-17-09
SCALE: NOTED
SHEET: 2 OF 32

Site Grading.dwg