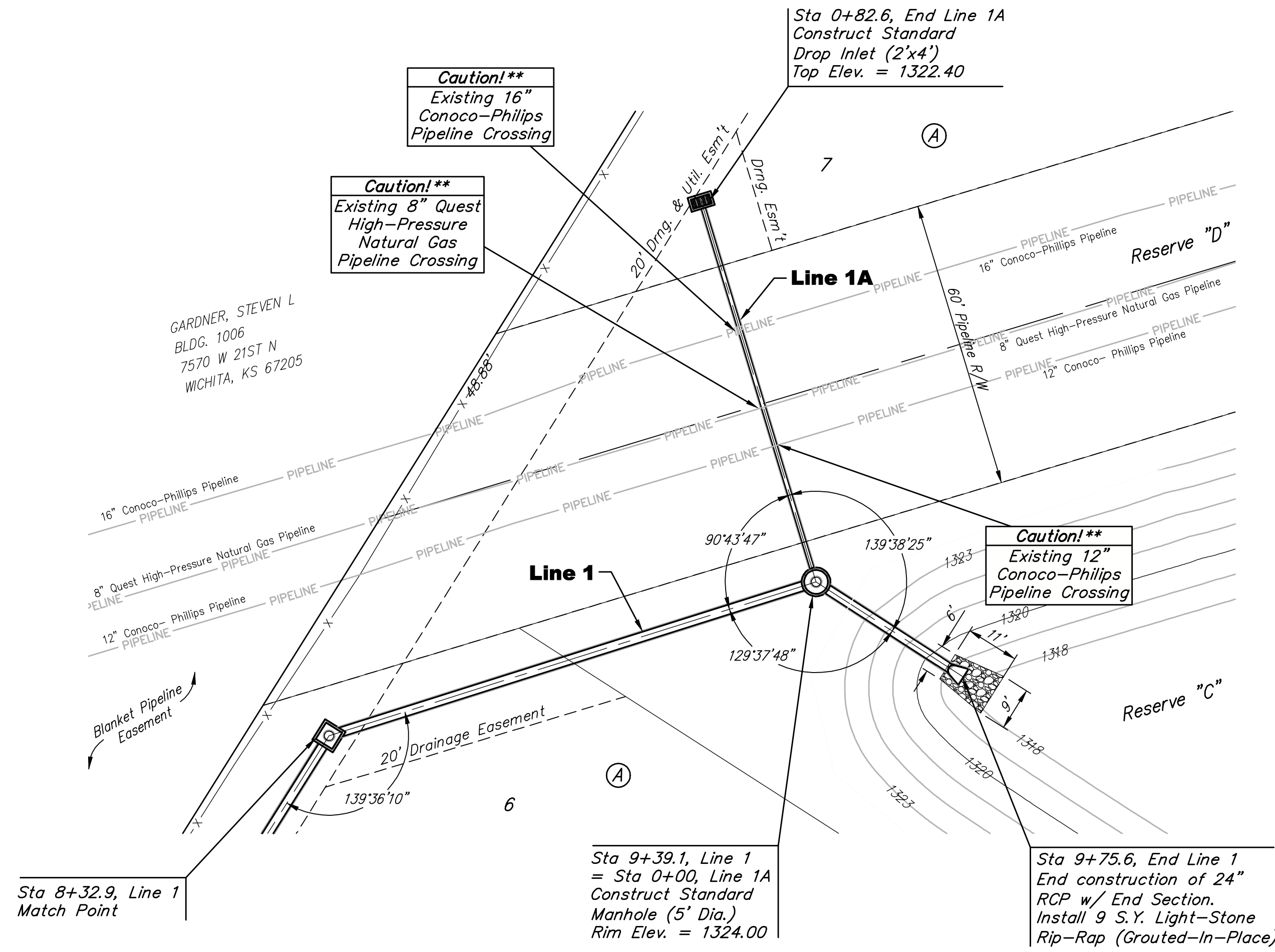


BENCHMARKS:

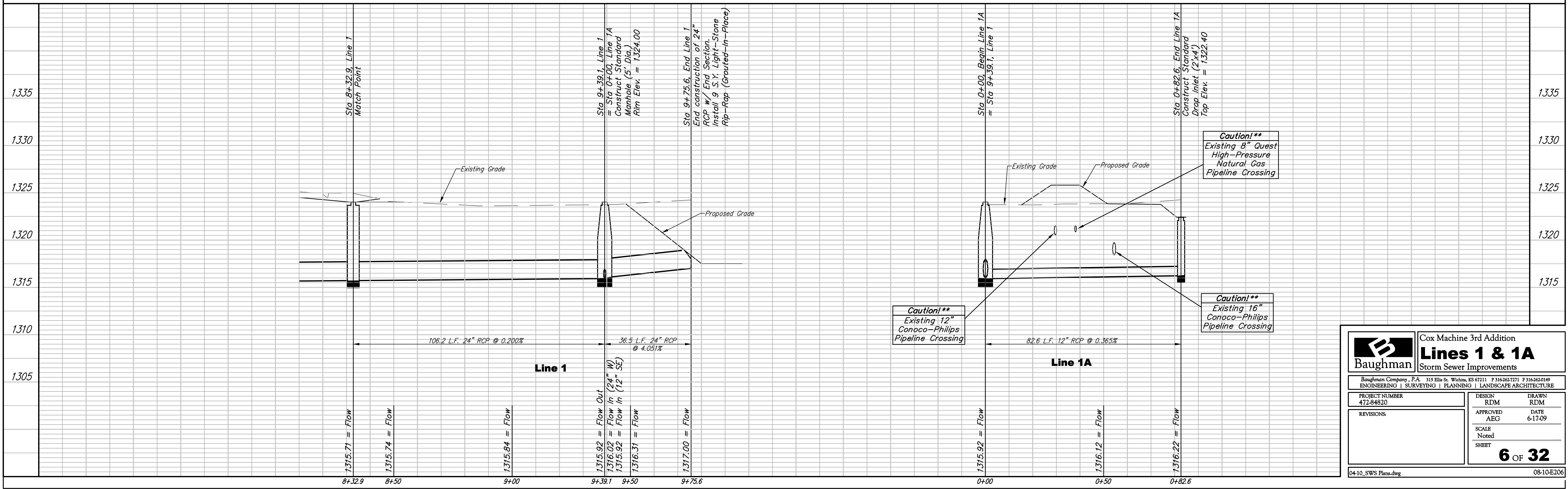
BM #1: CITY OF WICHITA BENCHMARK
DISC, 48.5' W. & 28' N. OF @ 21ST
STREET NORTH AND HOOVER STREET.
ELEV. = 1326.47 NGVD29

BM #2: RAIL ROAD SPIKE IN POWER
POLE 28' N. OF @ OF 21ST STREET
NORTH ALONG THE WEST LINE OF THE
PLAT.
ELEV. = 1327.25 NGVD29



**** Pipeline Crossing Notes:**

1. No Construction Equipment or Operations shall be allowed within ConocoPhillips or Quest Pipeline Right-of-way without first contacting a representative from both pipeline companies, a minimum of 48 hours prior to beginning construction.
2. Contractor and all sub-contractors shall be required to attend a safety meeting with pipeline personnel prior to any mobilization.
3. All construction work within or around the Pipeline Easement shall be done Monday through Friday.
4. Contractor shall coordinate all construction within Pipeline R/W with each Pipeline Company through Kansas One-Call. Contact the following in case of an emergency:
Quest: Joe Fowler (316) 764-6015
ConocoPhillips: J.R. McCaffree (316) 838-3411



		Cox Machine 3rd Addition	
		Lines 1 & 1A	
PROJECT NUMBER 472-84820		DESIGN RDM	DRAWN RDM
APPROVED AEG		DATE 6-17-09	SCALE Noted
REVISIONS:		SHEET 6 OF 32	
04-10_SWS Plans.dwg		08-10-E206	