

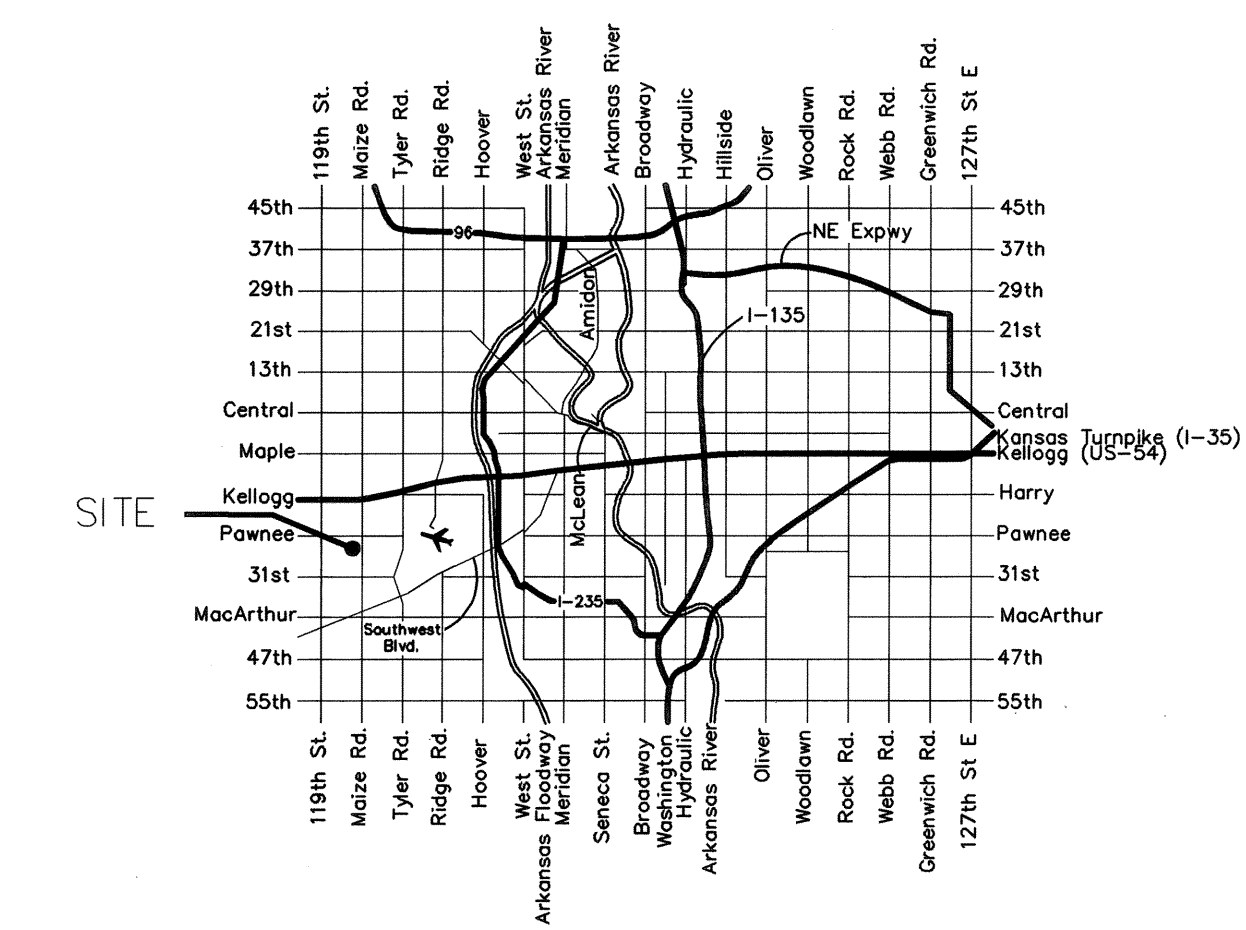
BENCHMARKS:

BM #1: COW Disc in the top of curb adjacent to the fire hydrant at the SW corner of Yosemite and Lamp Cir.
Elev. = 146.73 (City Datum)

BM #2: COW Disc in the top of curb adjacent to the fire hydrant on the west side of Westgate along the southwesterly line of Lot 13, Block B, Southern Ridge Addition.
Elev. = 144.10 (City Datum)

SHEET INDEX:

Title Sheet	1
Lines 1 & 2	2
Line 1	3
Lines 1 & 5	4
Line 3	5
Line 4	6
Lines 4 & 4A	7
Lines 6 & 6A	8
Line 6 & 6B	9
Standard Manhole Detail	10
Shallow Manhole Detail	11
Ring & Cover Detail	12
Standard Riser Detail	13
Erosion Control Plan	14
Erosion Control BMP's	15-18
Coordinate Sheet	19
Copy of Plat	20



Vicinity Map

Baughman Company, P.A. 315 Ellis St. Wichita, KS 67211 P 316-262-7271 F 316-262-0149
ENGINEERING | SURVEYING | PLANNING | LANDSCAPE ARCHITECTURE

Lat. 47, Cowskin Creek Interceptor Sewer
to serve

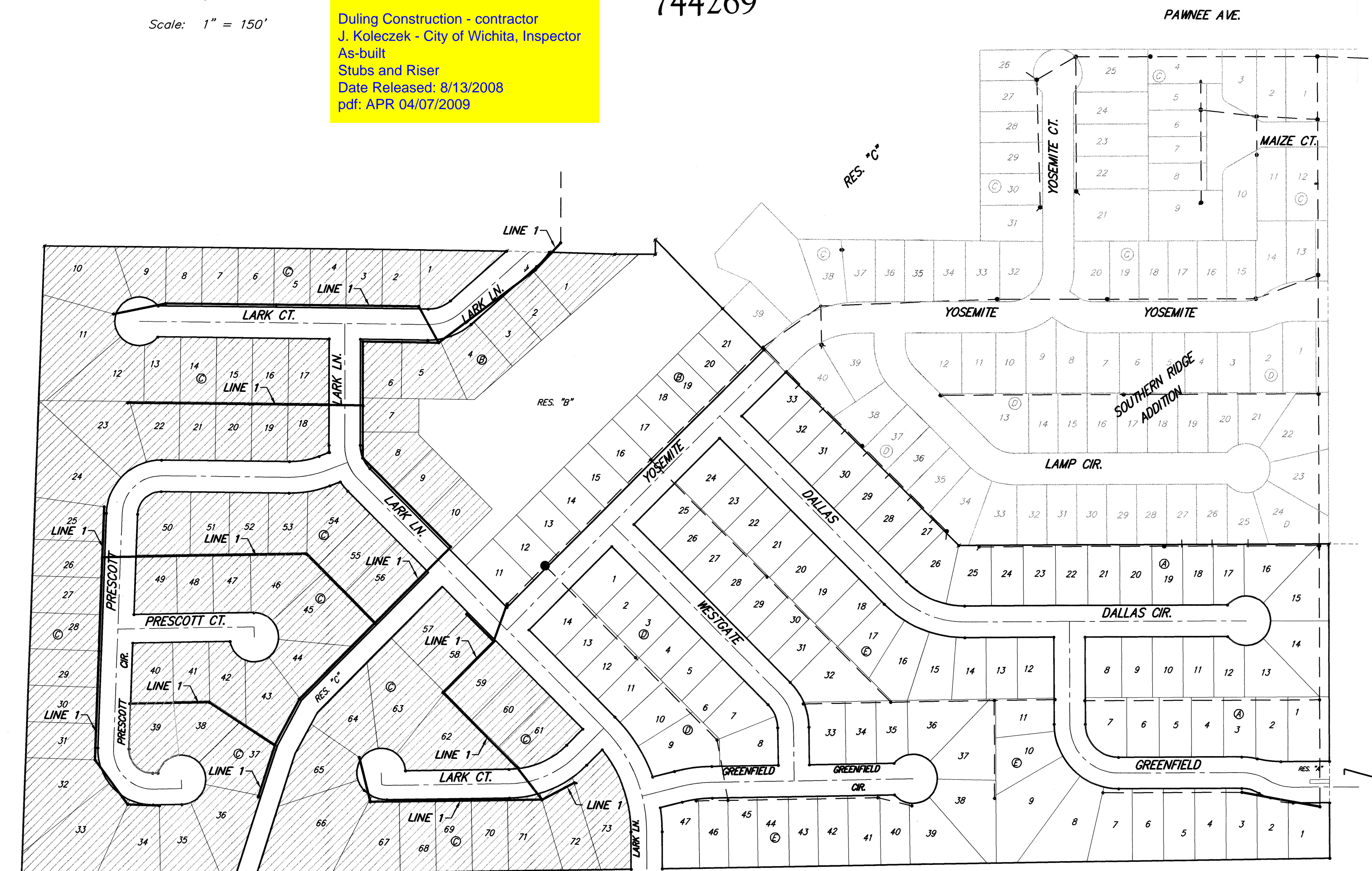
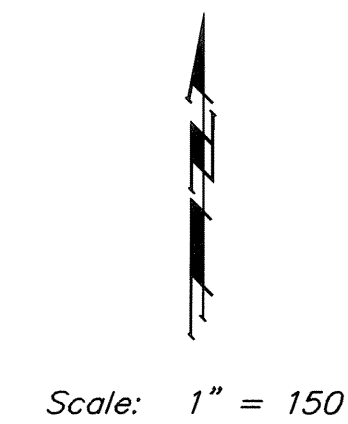
SOUTHERN RIDGE 3rd ADDITION - PHASE III

CITY OF WICHITA, KANSAS

Jim Armour, P.E. City Engineer

Project Number
468-83967
O.C.A. Number
744269

During Construction - contractor
J. Koleczek - City of Wichita, Inspector
As-built
Stubs and Riser
Date Released: 8/13/2008
pdf: APR 04/07/2009



BENEFIT DISTRICT:

GENERAL NOTES:

- Contractor will be required to provide notice to utility companies a minimum of twenty-four (24) hours prior to any excavation, as follows:
Kansas One-Call 687-2470
The Contractor must notify the following in case of an emergency:
Cox Communications 262-4270
Kansas Gas Service 1-888-482-4950
Westar Energy 383-8650
Aquila Energy 1-888-482-4950
Southwestern Bell 268-2245
City of Wichita Water Dept. 268-4563
City of Wichita Sewer Maint. 268-4024
City of Wichita Storm Sewer Maint. 268-4090
City of Wichita Traffic Maint. 268-4034
Conoco Pipeline Co. 1-800-231-2551
Williams Pipeline Co. 529-6600
Phillips Pipeline Co. 1-800-766-8230
- Underground utility service lines and overhead utility pole lines are to be adjusted as necessary by others prior to construction unless the plans specifically call for their adjustment by the Contractor or unless the plans specifically identify a utility to be adjusted by its owner during construction. Existing utilities and their location, as shown on the plans, represent the best information obtainable for design. The Contractor will be required to work around existing utilities within the right-of-way which do not conflict with proposed construction.
- Trees and shrubs in public right-of-way which are in direct conflict with proposed new construction shall be removed by the Contractor with the Engineer's approval. Trees and shrubs which are not in direct conflict with proposed new construction shall be saved and protected from damage.
- The Contractor shall give all property owners and/or tenants of developed property abutting the construction of this project a minimum of ten (10) days advance notice prior to start of construction.
- The Contractor shall be responsible for preserving property irons. The Contractor will be required to re-establish any property irons which are damaged or destroyed by his construction operations. Such irons shall be reestablished by a licensed land surveyor in accordance with state laws.
- When connecting to existing manhole or stub, the contractor shall reshape manhole bottom or adjust the existing stub's alignment or elevation as necessary. Cost shall be subsidiary to project.
- The Contractor shall be responsible for maintaining continuous flow of sewage through construction. Contractor's proposed method for maintaining sewage flow shall be approved by the Engineer. Cost of maintaining flow of sewage through construction will not be paid for directly and this cost shall be considered as subsidiary to the other pay items of work.
- The developer for this project is Jay Russell, 722-2417
- Following construction, all disturbed areas shall be re-graded and restored to pre-construction grades. Any excess earth remaining from excavation shall be wasted on-site at a location to be determined by the engineer.
- All existing and proposed erosion control measures including silt fencing, erosion control mat, straw bales, inlet barriers, and const. entrance shall be maintained throughout construction by the contractor and until project is accepted by the City of Wichita. The on-site engineer shall complete weekly reports on the status of erosion control measures. The contractor shall be required to comply with maintenance and/or replacement of erosion control measures as determined by the on-site engineer until project is accepted by City of Wichita. Cost to be included in "Site Clearing and Restoration."
- All areas disturbed during construction shall be seeded at 300 lbs./acre with Rye Grass immediately following construction in that area. Contractor shall prepare ground per City Specifications. Cost shall be paid by bid item "Project Seeding."
- All Risers shall be constructed using Method "B."