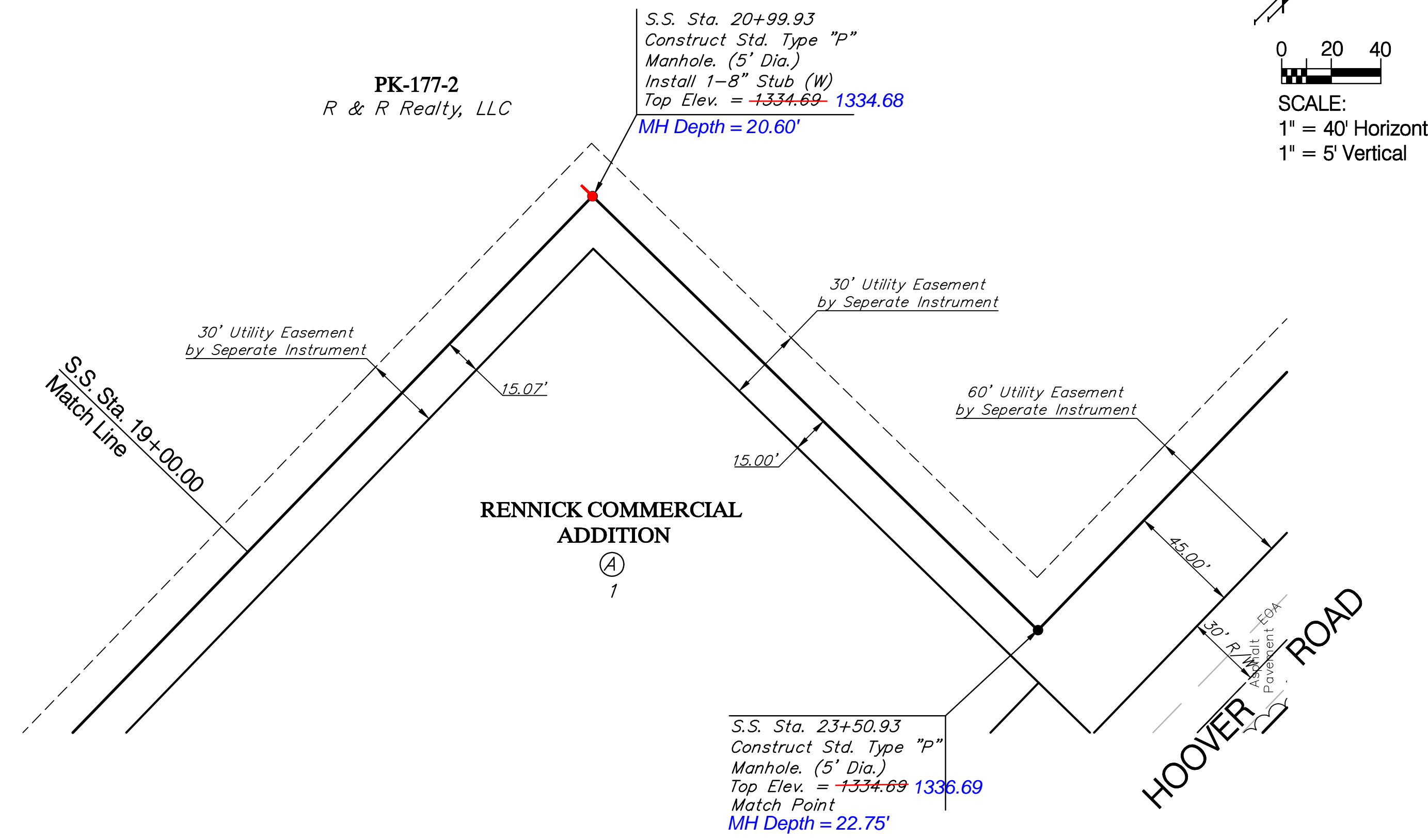
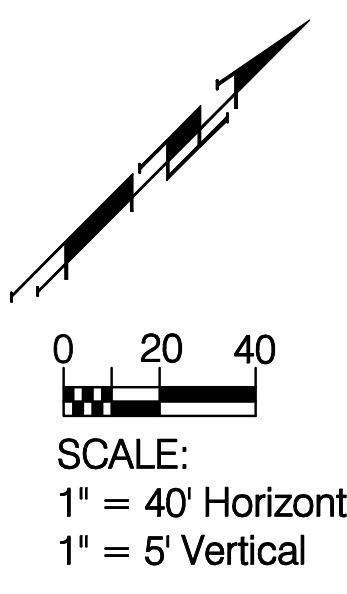
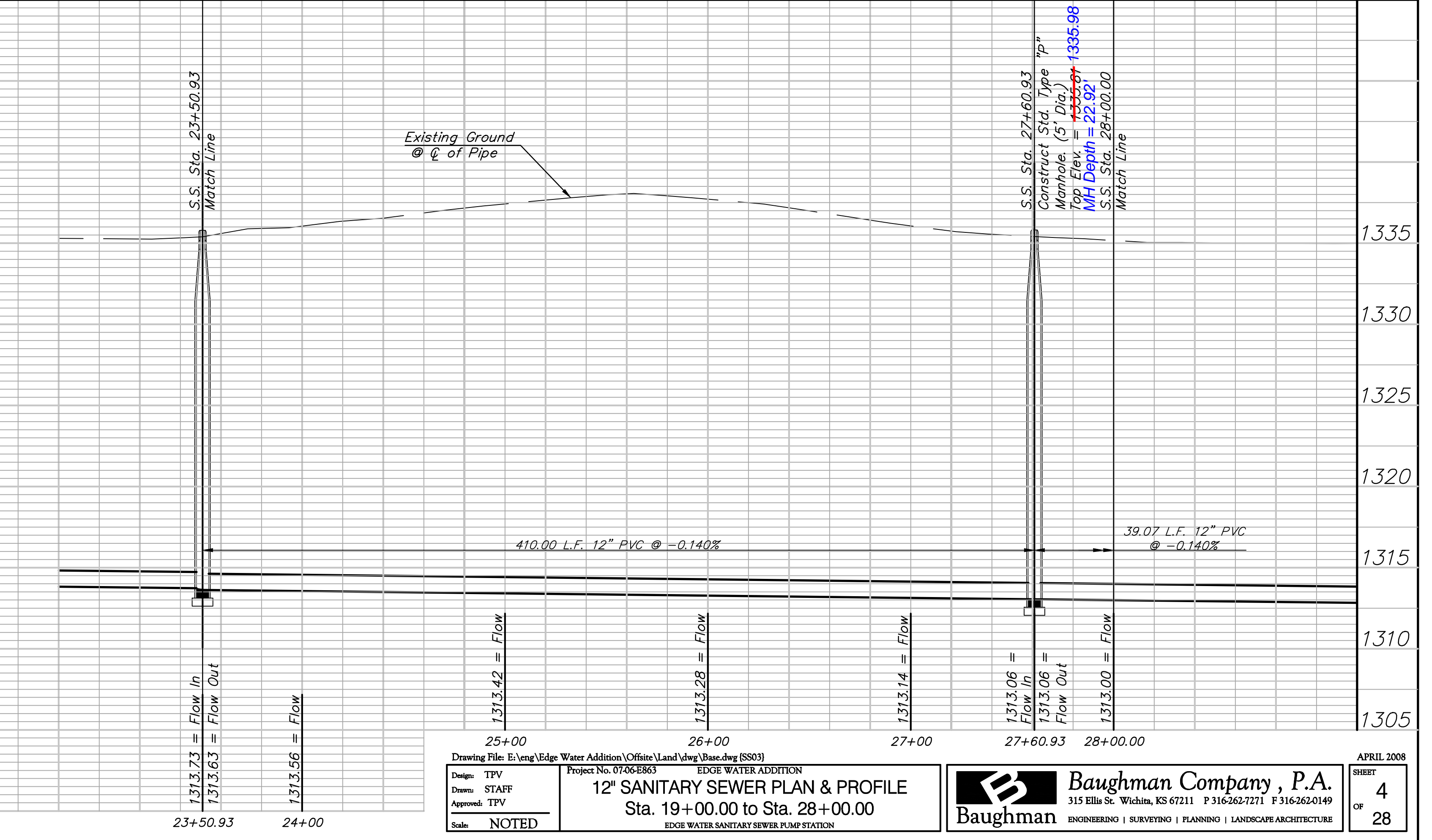
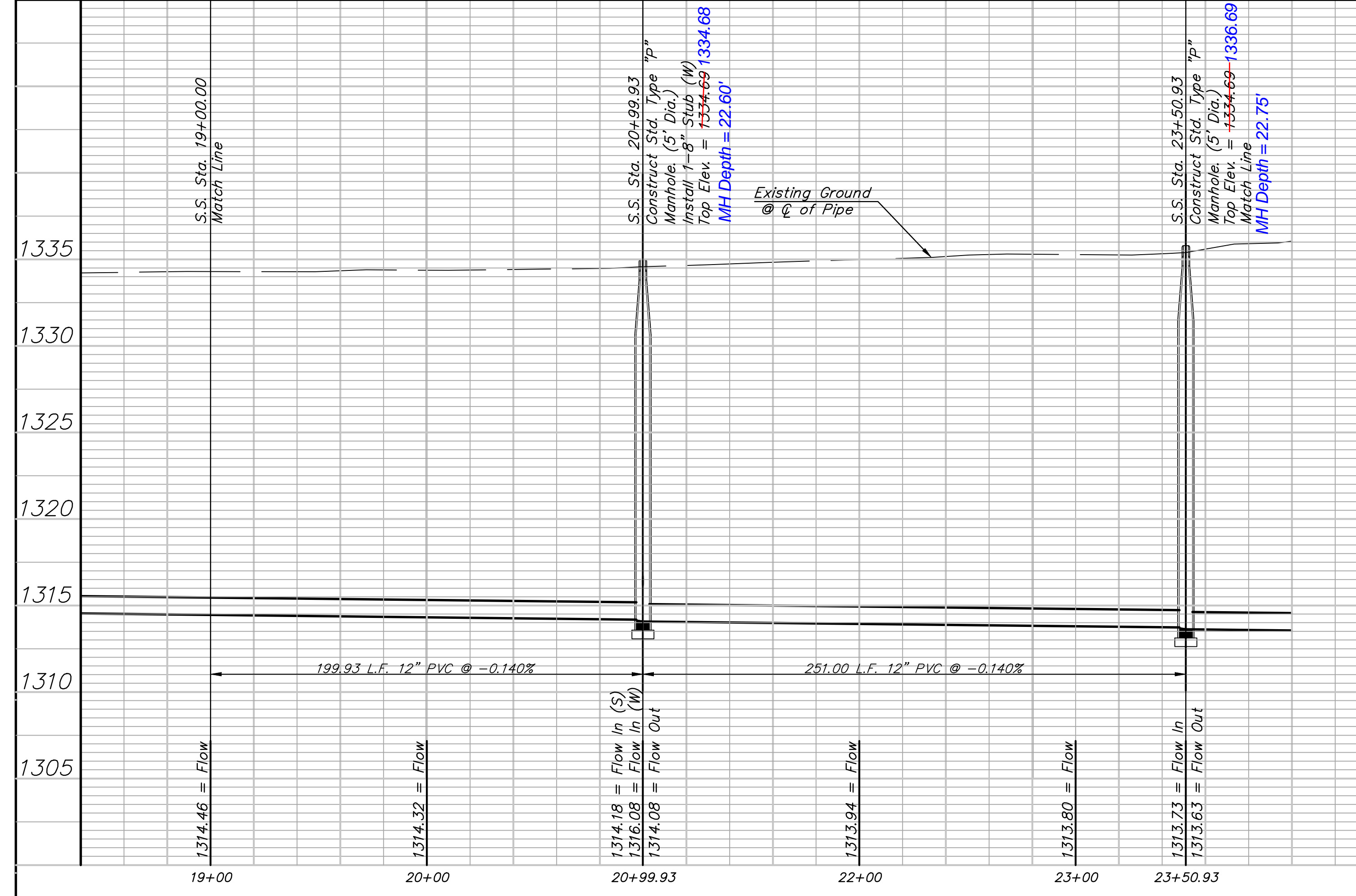
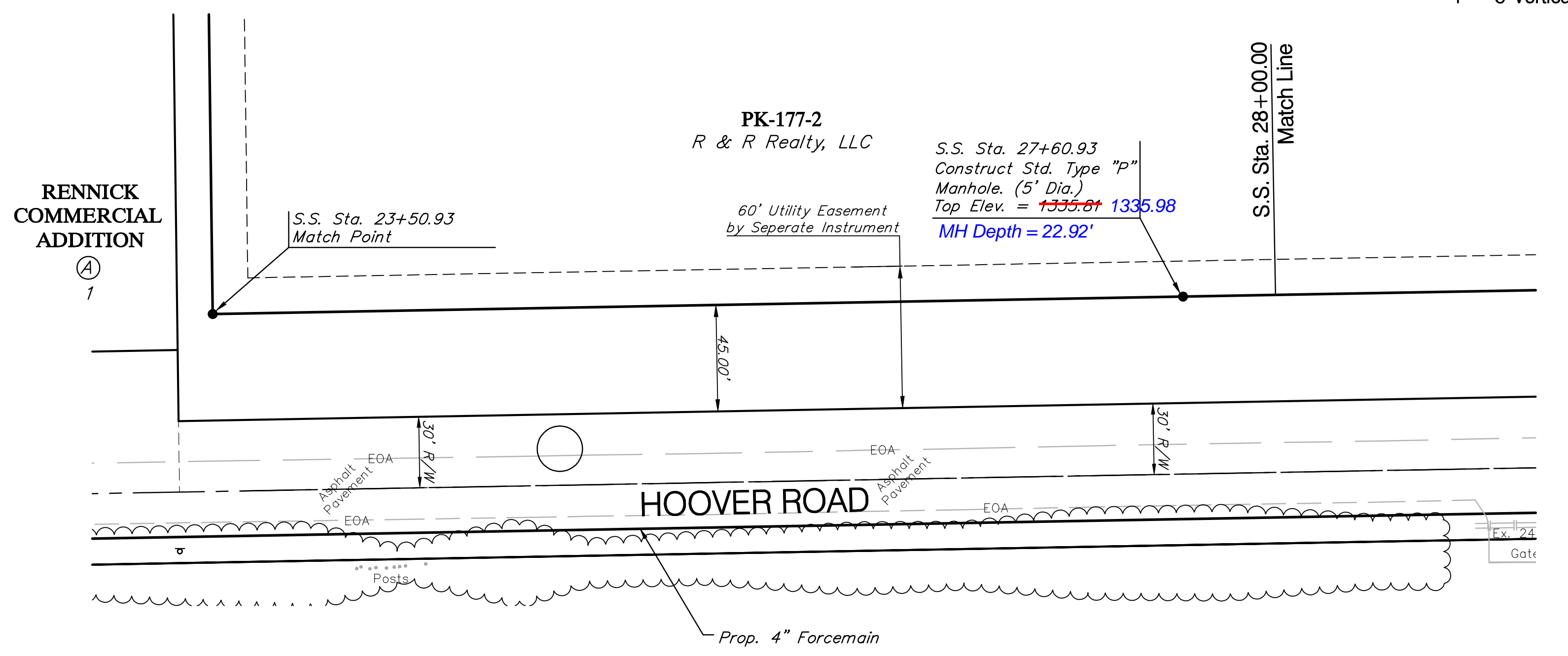
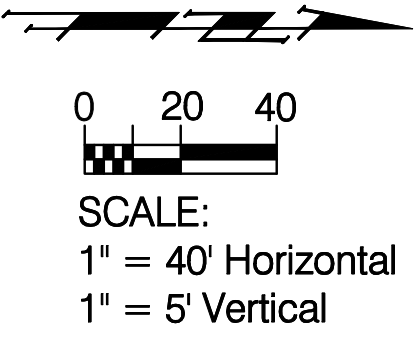


Reseed 451 L.F. According to General Note 19 as Measured Along the Sewer Line from Sta. 19+00 to Sta. 23+51.



Reseed 449 L.F. According to General Note 19 as Measured Along the Sewer Line from Sta. 23+51 to Sta. 28+00.



Drawing File: E:\eng\Edge Water Addition\Offsite\Land\dwg\Basc.dwg (SS03)		APRIL 2008	
Design: TPV	Project No. 07-06-E863	<p><b>Baughman Company, P.A.</b> 315 Ellis St. Wichita, KS 67211 P 316-262-7271 F 316-262-0149</p> <p>ENGINEERING   SURVEYING   PLANNING   LANDSCAPE ARCHITECTURE</p>	
Drawn: STAFF	<b>12" SANITARY SEWER PLAN &amp; PROFILE</b>		
Approved: TPV	Sta. 19+00.00 to Sta. 28+00.00		
Scale: NOTED	EDGE WATER SANITARY SEWER PUMP STATION		
		SHEET 4 OF 28	