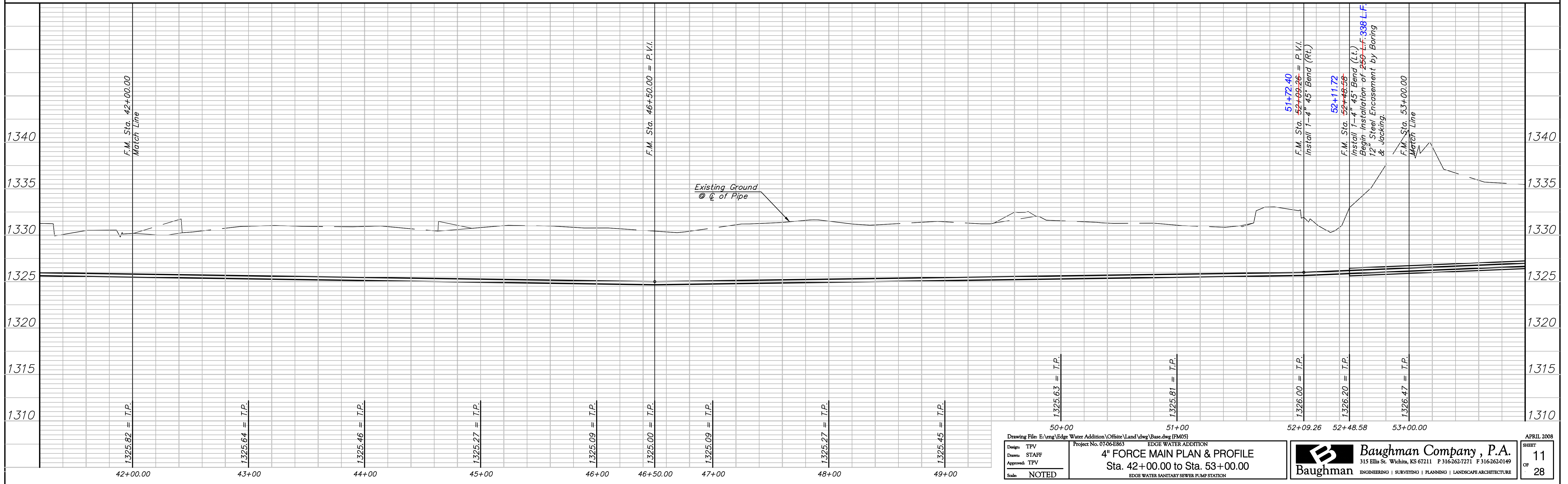
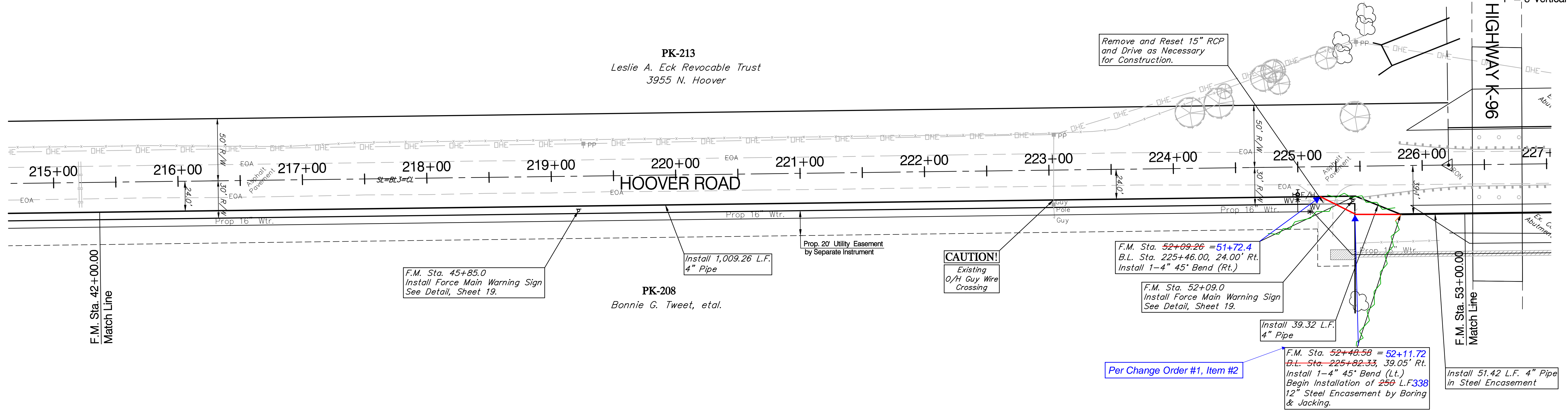
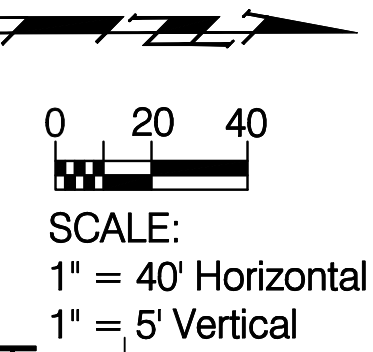


BENCHMARK:
 BM #4 - COW Benchmark the North R/W of K-96 Highway
 and 42.5' West of the Centerline of Hoover Road.
 B.L. Sta. 228+60.3, 39.9' Lt.
 Elev. = 1333.14 (MSL)

Reseed 1049 L.F. According to General
 Note 19 as Measured Along the Force
 Main from Sta. 42+00 to Sta. 52+49.



Drawing File: E:\eng\Edge Water Addition\Offsite\Land\dwg\Basc.dwg (FM05)		Project No. 07-06-EB63		EDGE WATER ADDITION	
Design: TPV	Drawn: STAFF	4" FORCE MAIN PLAN & PROFILE			
Approved: TPV	Scale: NOTED	Sta. 42+00.00 to Sta. 53+00.00			
		Baughman Company, P.A.		315 Ellis St. Wichita, KS 67211 P 316-262-7271 F 316-262-0149	
		Baughman		ENGINEERING SURVEYING PLANNING LANDSCAPE ARCHITECTURE	
					APRIL 2008
					SHEET 11 OF 28