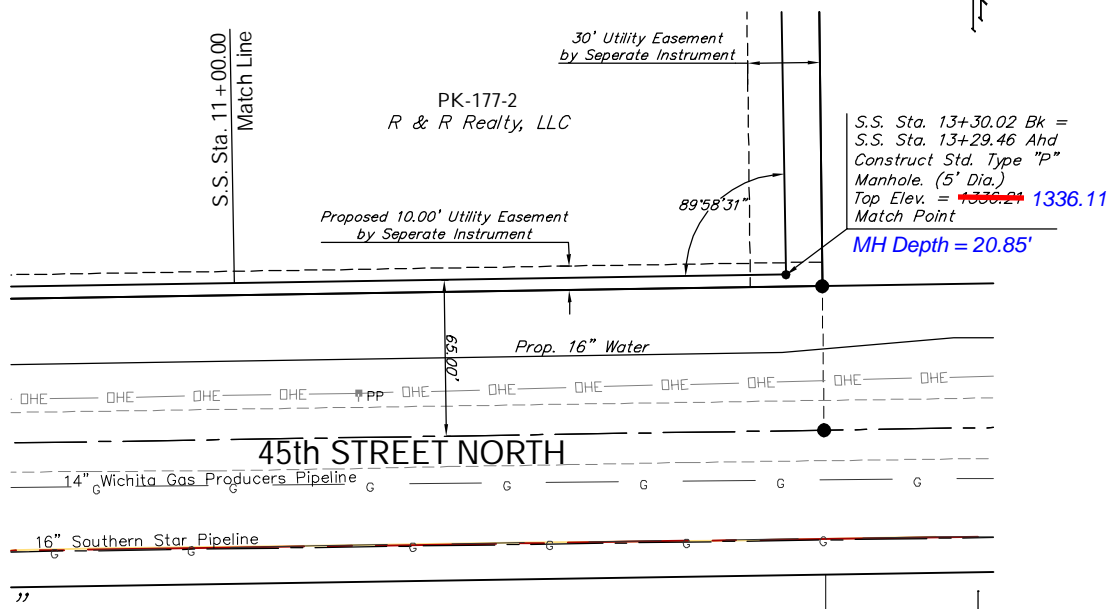


Reseed 230 L.F. According to General Note 19 as Measured Along the Sewer Line from Sta. 11+00 to Sta. 13+30.

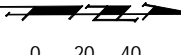


SCALE:
1" = 40' Horizontal
1" = 5' Vertical

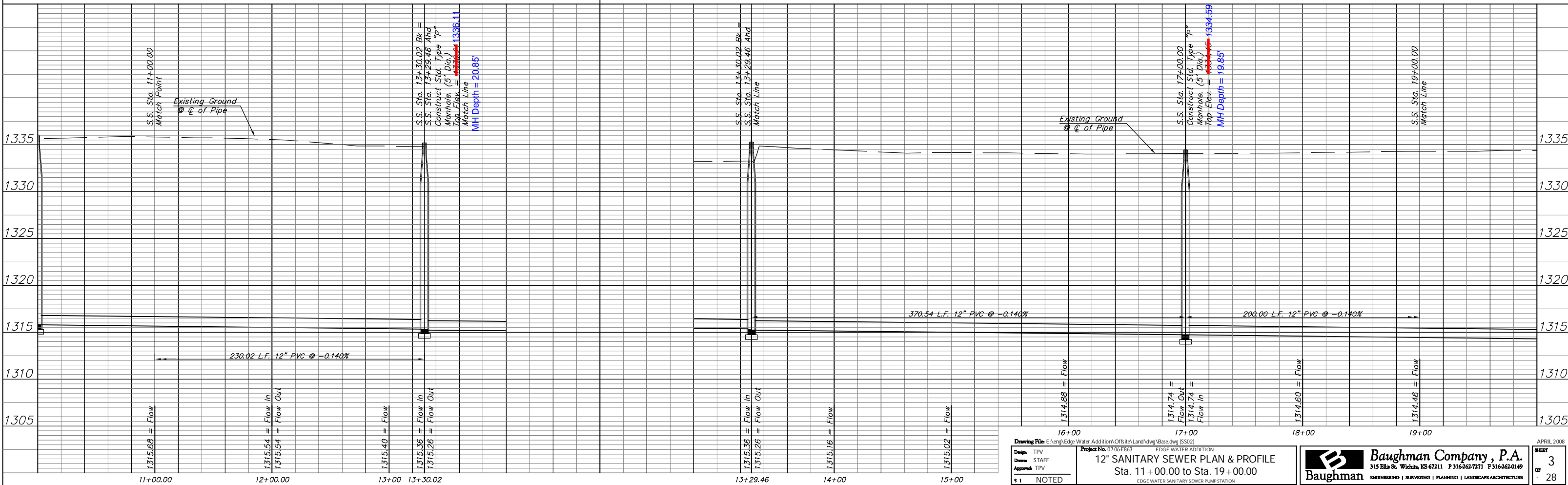
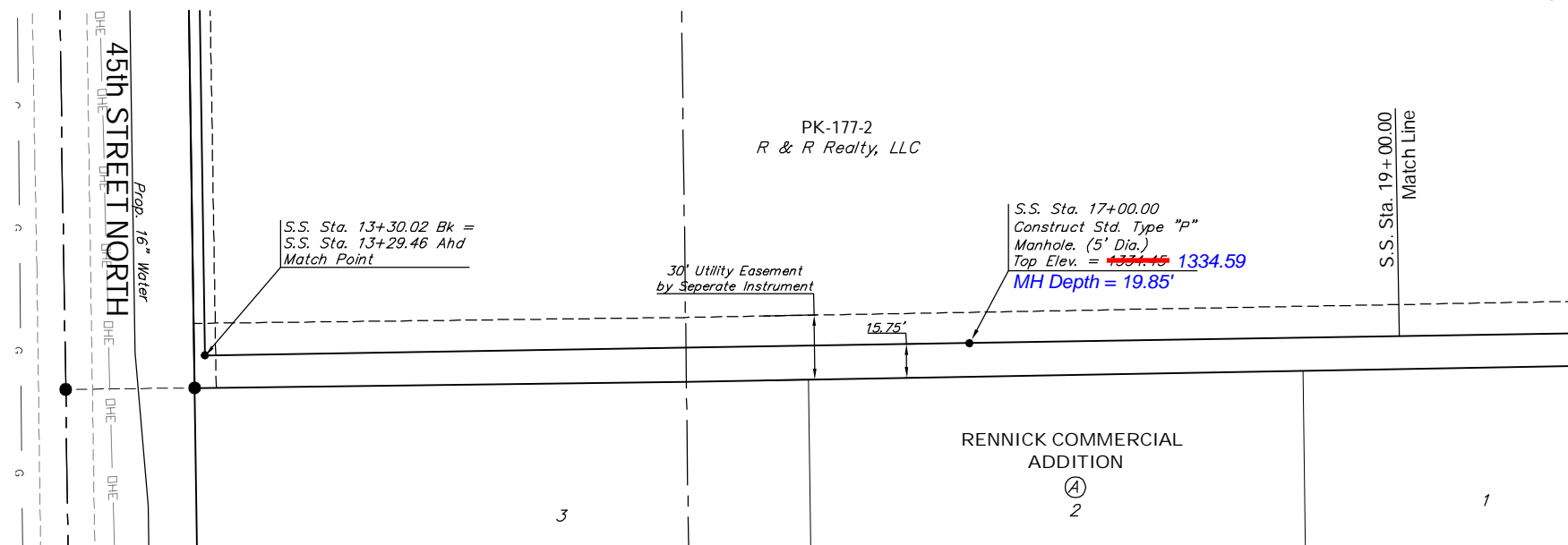


Revised 9-16-08 TPV
Moved SS Line 5' North of PL

Reseed 570 L.F. According to General Note 19 as Measured Along the Sewer Line from Sta. 13+30 to Sta. 19+00.



SCALE:
1" = 40' Horizontal
1" = 5' Vertical



Design: TPV Drawn: STAFF Approved: TPV 91 NOTED	Drawing File: E:\eng\Edge Water Addition\Offsite\Land\dwg\Bse.dwg (SS02) Project No. 0706-EB63 12" SANITARY SEWER PLAN & PROFILE Sta. 11+00.00 to Sta. 19+00.00 EDGE WATER SANITARY SEWER PUMP STATION	Baughman Company, P.A. 315 Ella St. Wichita, KS 67211 P 316-262-7271 F 316-262-0149 ENGINEERING SURVEYING PLANNING LANDSCAPE ARCHITECTURE	APRIL 2008 SHEET 3 OF 28
--	---	--	--