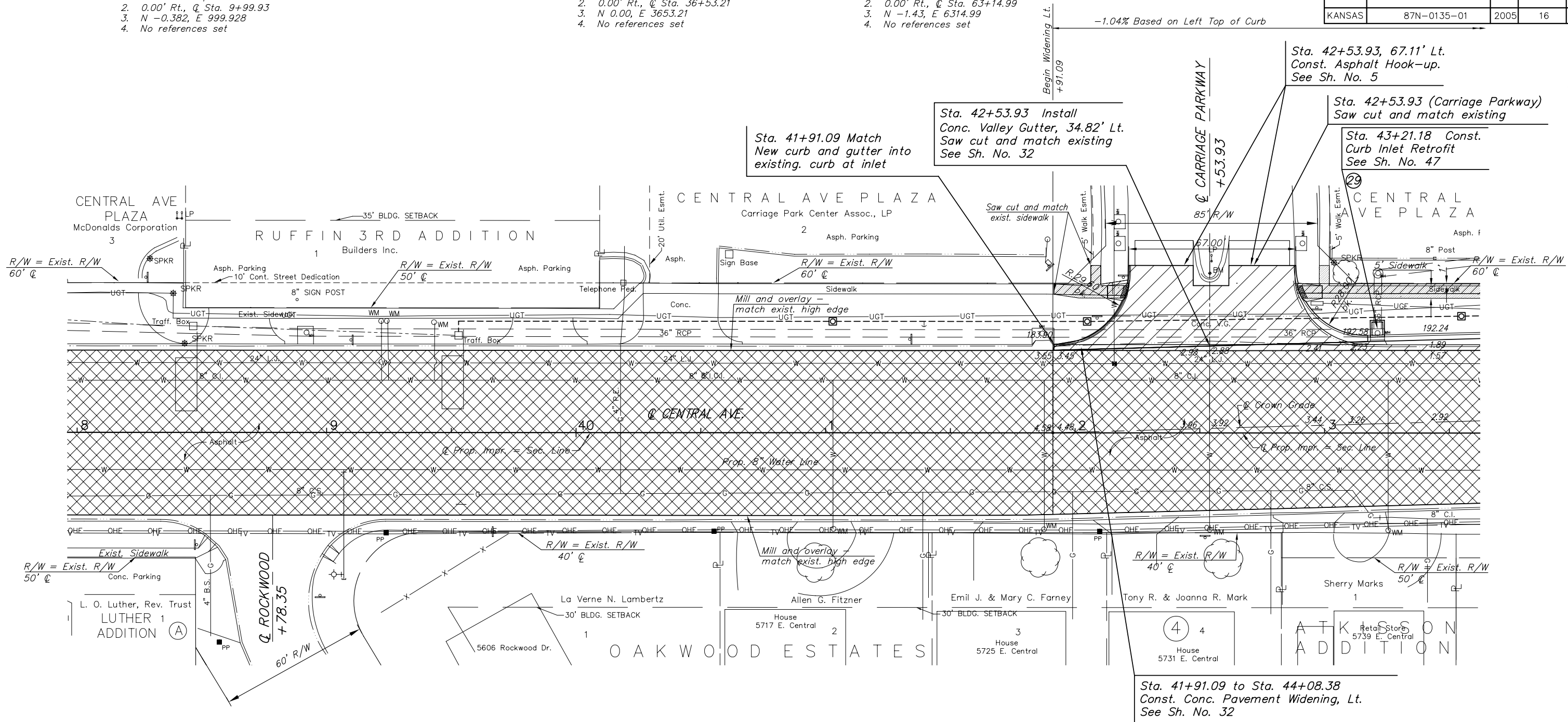


P.I. Southwest Corner Sec. 13, T27S, R1E
 1. Found Iron Pipe in Thimble
 2. 0.00' Rt., @ Sta. 9+99.93
 3. N -0.382, E 999.928
 4. No references set

P.I. South Quarter Corner, Sec. 13, T27S, R1E
 1. Found Iron Pipe in Thimble
 2. 0.00' Rt., @ Sta. 36+53.21
 3. N 0.00, E 3653.21
 4. No references set

P.I. Southeast Corner, Sec. 13, T27S, R1E
 1. Found Thimble
 2. 0.00' Rt., @ Sta. 63+14.99
 3. N -1.43, E 6314.99
 4. No references set

STATE	PROJECT NO.	YEAR	SHEET NO.	SHEETS
KANSAS	87N-0135-01	2005	16	137



UTILITIES

COX COMMUNICATIONS (CABLE)	262-0661
WESTAR (ELECTRIC)	261-6512
KANSAS GAS SERVICE (GAS)	832-3101
SBC (TELEPHONE)	800-870-8390
CITY OF WICHITA WATER & SEWER	262-6000
AQUILA (GAS)	946-0096

LEGEND

	Mill and Overlay
	Pavement Removal
	Trees to be Removed

UTILITY ADJUSTMENTS

DESCRIPTION	STATION/OFFSET	Adjustment	REMARKS
Water Valve	42+15.71, 27.72' Lt.		Adjust

H:\CIVIL\03149\dwg\pave\03149PL6.DWG 02/28/2006 02:23:29 PM CST
 KANSAS DEPARTMENT OF TRANSPORTATION
STREET IMPROVEMENT PLAN
STA. 38+00 TO STA. 43+50
 PROJECT NO. 87N-0135-01 SEDGWICK CO.
 M K E C ENGINEERING CONSULTANTS, INC.
 WICHITA, KANSAS

DESIGNED BY: JRA	CHECKED BY: JRA
DRAWN BY: JSB, DPG	DATE: DEC. 2005 SHEET 16 OF 137