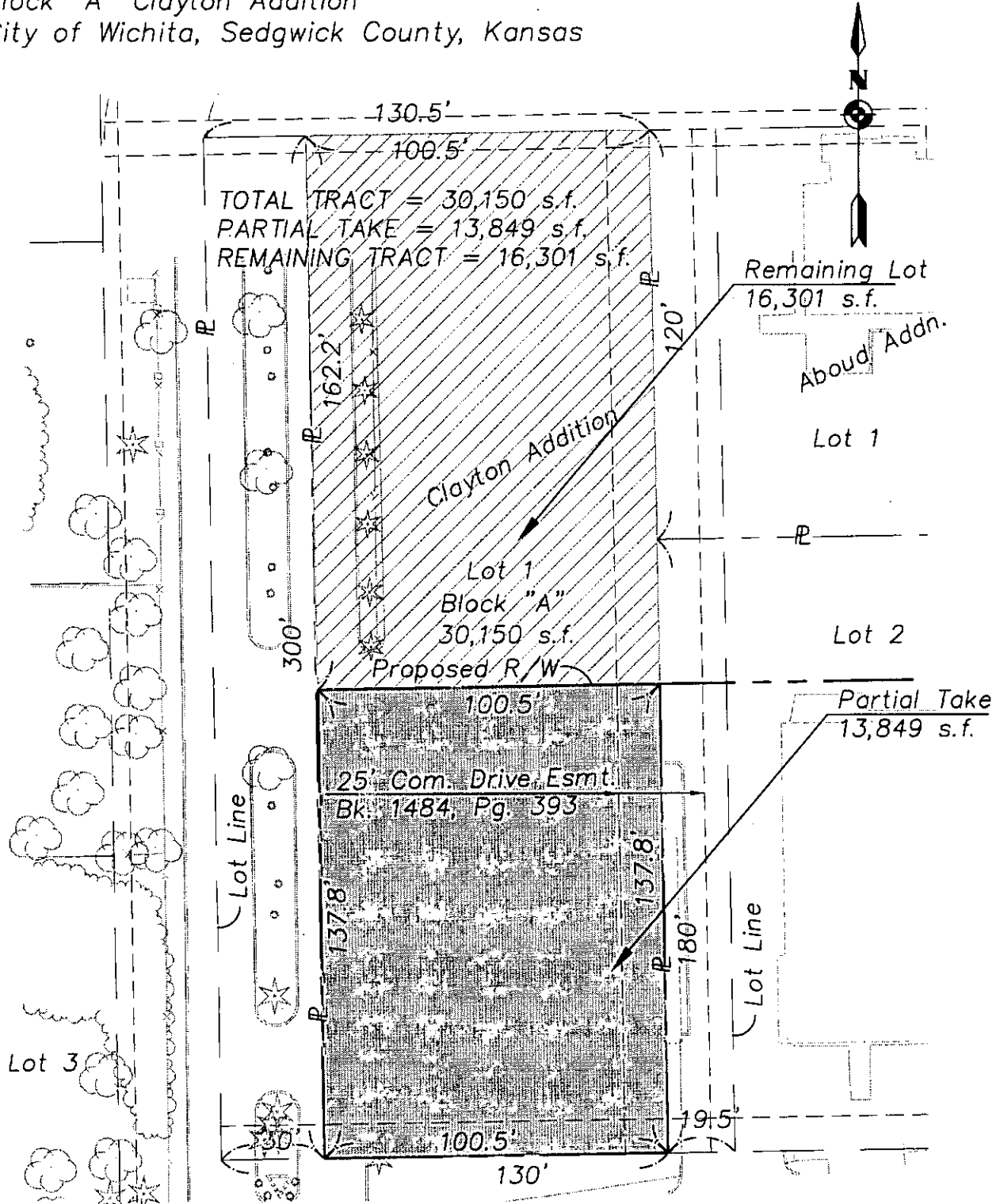


TRACT 161-Remaining Tract

December 9, 2002

N. 162.2' Of Lot 1 Exc. W 30' & Exc. E 19.5'
Block "A" Clayton Addition
City of Wichita, Sedgwick County, Kansas



J:\0001\Tract Maps\161\dwg.dwg 12/12/2002 02:14:21 PM CST



Cook, Flatt & Strobel
ENGINEERS, P.A.

City of Wichita

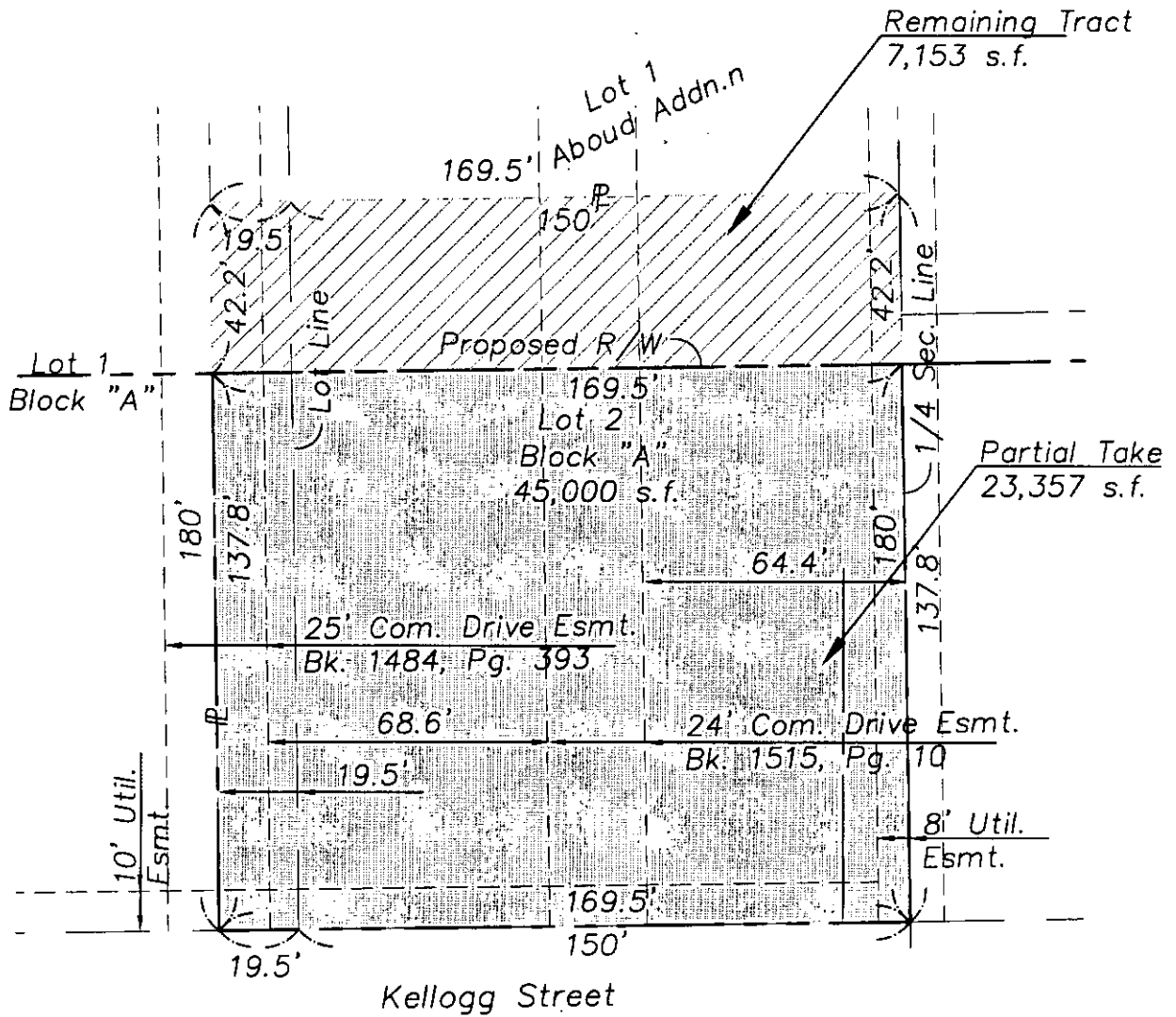
TRACT 162-Remaining Tract

December 9, 2002

N. 42.2' of E. 19.5' Lot 1 Block A &
 N. 42.2" Lot 2 Block A Clayton Addition
 City of Wichita, Sedgwick County, Kansas



TOTAL TRACT = 30,510 s.f.
 PARTIAL TAKE = 23,357 s.f.
 REMAINING TRACT = 7,153 s.f.



J:\00011\Tract Maps\162X.dwg 12/12/2002 02:17:03 PM CST



Cook, Flatt & Strobel
 ENGINEERS, P.A.

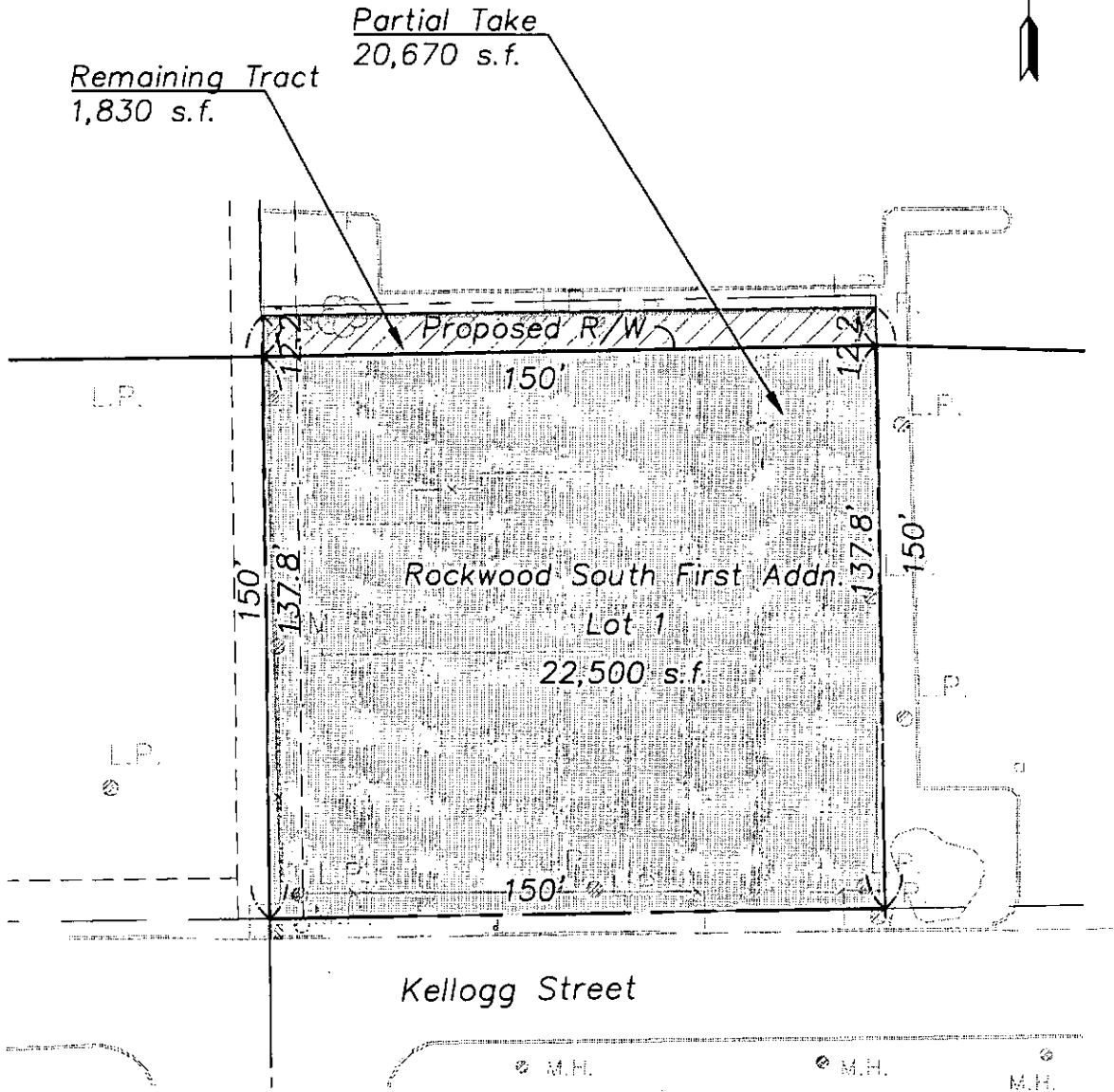
City of Wichita

TRACT 163-Remaining Tract

December 5, 2002

N. 12.2' Of Lot 1
Rockwood South First Addition
City of Wichita, Sedgwick County, Kansas

TOTAL TRACT = 22,500 s.f.
PARTIAL TAKE = 20,670 s.f.
REMAINING TRACT = 1,830 s.f.



J:\00011\Tract Maps\163X.dwg 12/17/2002 02:31:31 PM CST



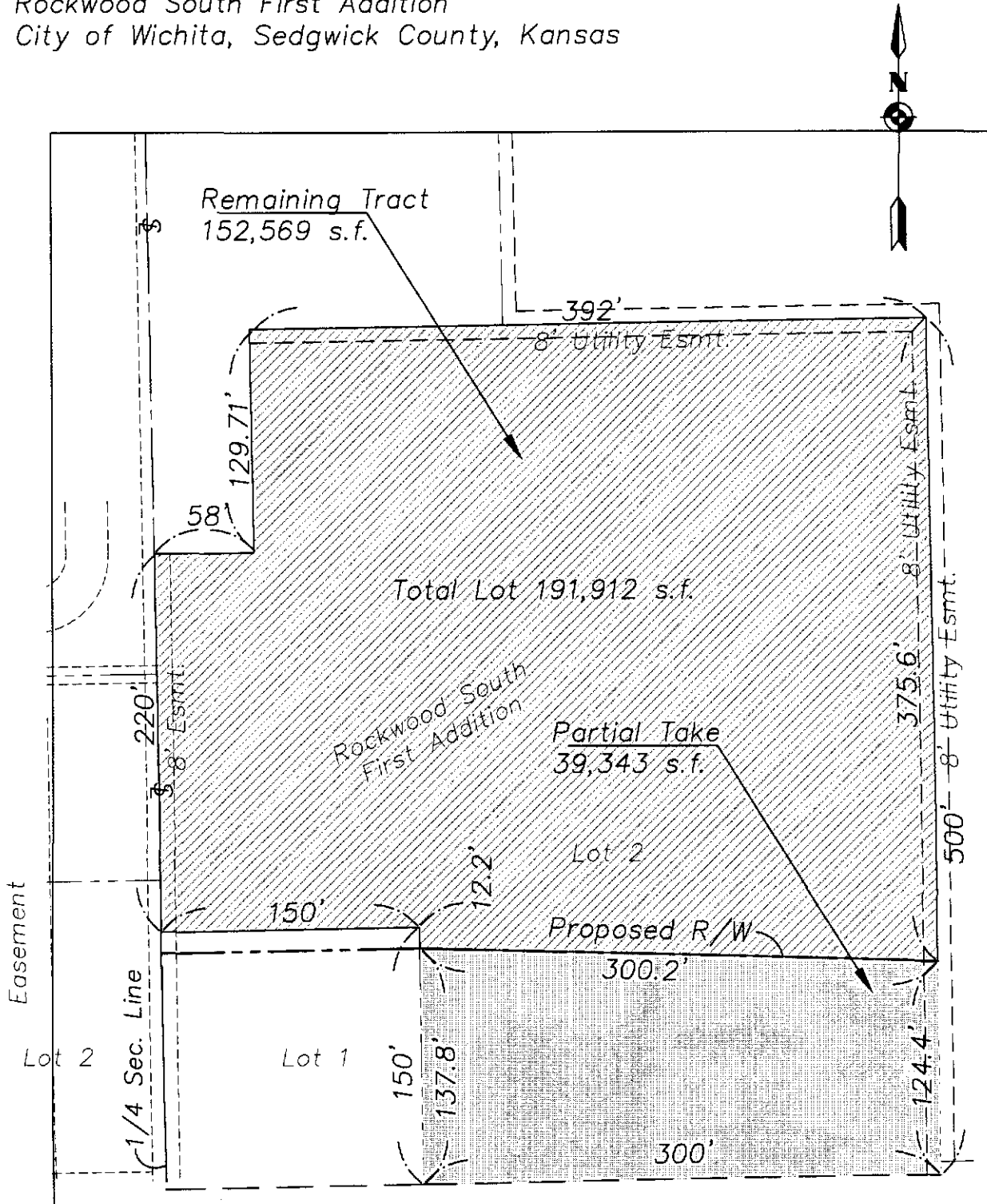
Cook, Flatt & Strobel
ENGINEERS, P.A.

City of Wichita

TRACT 164-Remaining Tract

December 9, 2002

Lot 2 Except The S. 125'±
Rockwood South First Addition
City of Wichita, Sedgwick County, Kansas



Cook, Flatt & Strobel
ENGINEERS, P.A.

City of Wichita