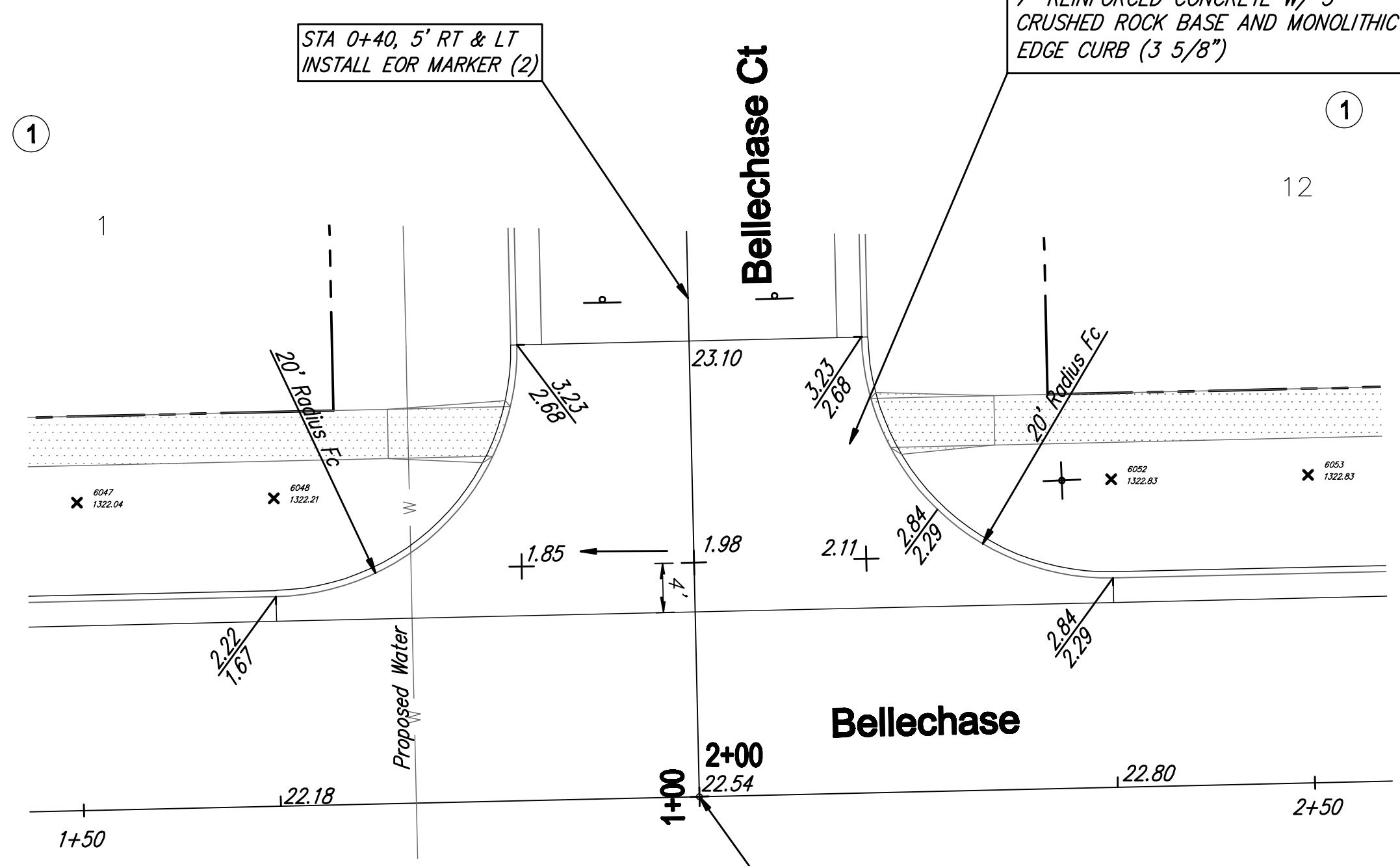
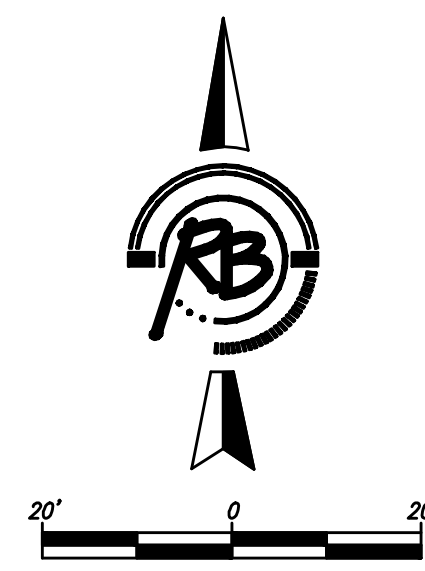
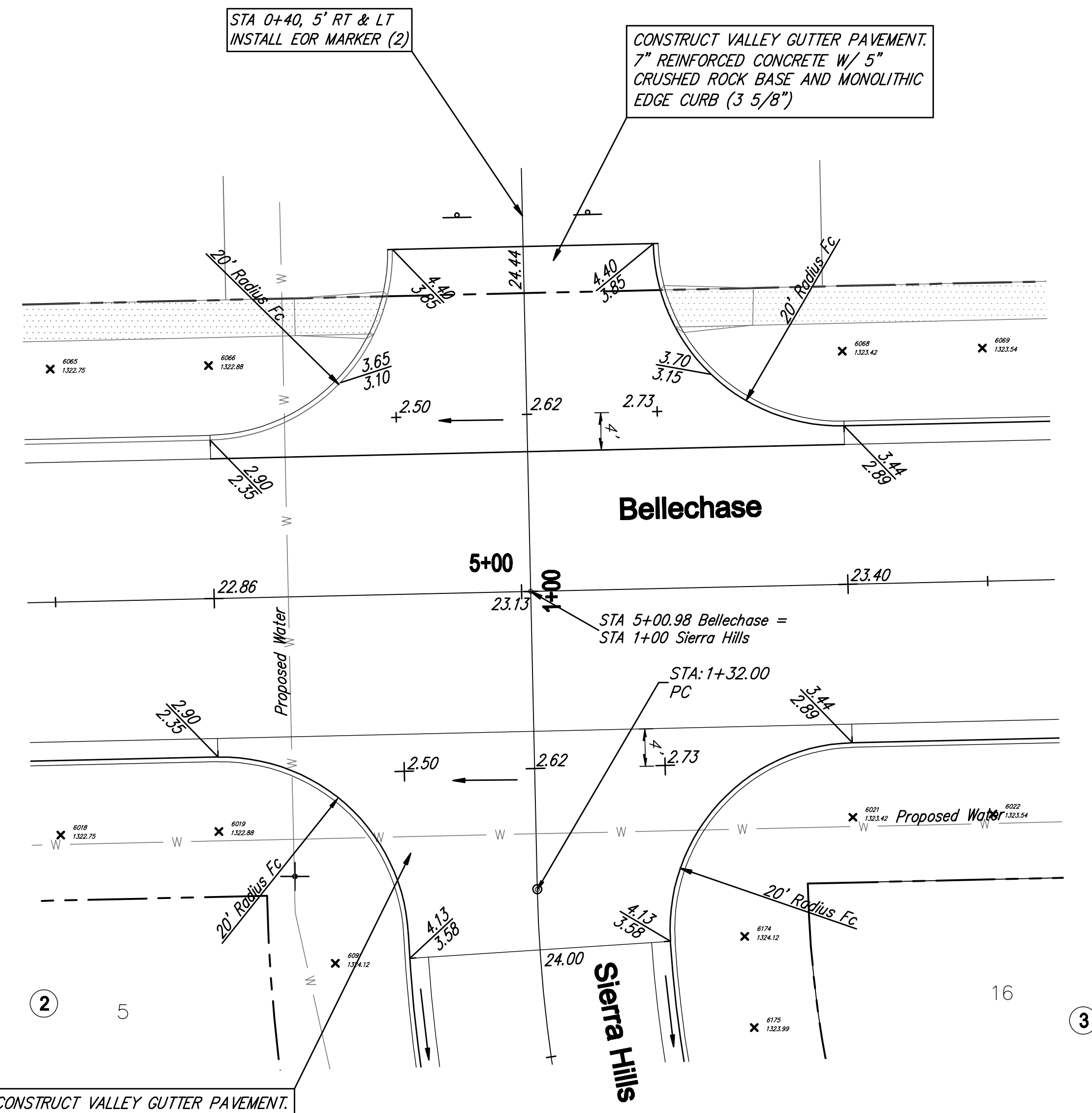


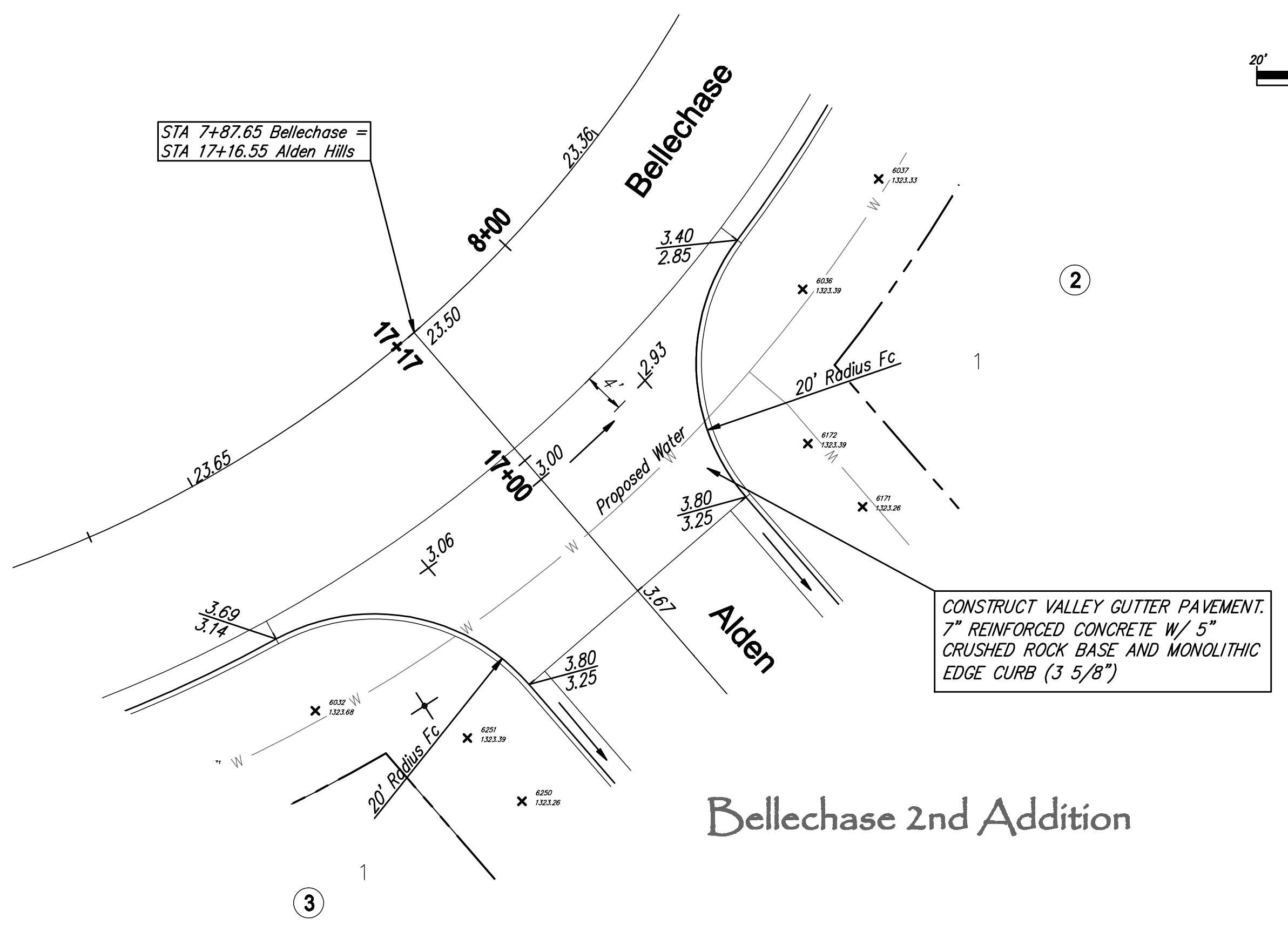
# Bellechase 2nd Addition



# Unplatted



STA 7+87.65 Bellechase = STA 17+16.55 Alden Hills



# Bellechase 2nd Addition

|   |  |
|---|--|
| <b>Bellechase 2nd Addition<br/>Intersection Details<br/>WICHITA, KANSAS</b> |  |
|   | <b>Ruggles &amp; Bohm, P.A.</b><br>Engineering, Surveying, Land Planning |
|   | 624 North Main<br>Wichita, Kansas 67208<br>www.rbag.com                  |
| (913) 264-8888<br>(913) 264-4821 fax<br>E-mail: info@rbag.com               | EJG<br>EJG<br>Feb. 10, 2009<br>EJG                                       |
| DRAWING FILE<br>Paving Intersection Details                                 | PROJECT NUMBER<br>472-84763  |
| 13<br>of<br>23  | 33/42E   |