

N 20493.16 E 20345.27
 STA. 0+00.00 SWS LINE 5
 BL STA. 36+65.32, 20.67' RT
 BEGIN 18" RCP CULVERT W/ END SECTION
 FL ELEV. = 1355.0

N 20464.92 E 20316.62
 STA. 0+40.23 SWS LINE 5
 BL STA. 36+99.31, 23.59' RT
 CONSTRUCT TYPE "P" SHALLOW MH
 W/ BEEHIVE FRAME & GRATE
 TOP ELEV. = 1338.80

N 20444.03 E 20304.26
 STA. 0+64.50 SWS LINE 5
 BL STA. 37+19.54, 24.54' RT
 END 18" RCP CULVERT W/ END SECTION
 FL ELEV. = 1356.50

N 20440.39 E 20305.34
 STA. 0+00.00 SWS LINE 1
 BL STA. 37+22.00, 22.13' RT
 BEGIN 18" RCP CULVERT W/ END SECTIONS.
 PLACE 17 S.Y. LIGHT STONE RIP RAP.
 FL ELEV.=1336.60

N 20417.48 E 20340.54
 STA. 0+42.00 SWS LINE 1
 BL STA. 37+30.57, -18.90' LT
 END 18" RCP CULVERT W/ END SECTIONS
 FL ELEV.=1337.00

CAUTION! 8" WATER LINE
 CROSSING. SEE WATER LINE
 LOWERING DETAILS ON SHEET 18.

N 20530.17 E 20405.52
 STA. 0+66.00 SWS LINE 3
 BL STA. 10+23.14, 24.41' LT
 END 18" RCP CULVERT W/ END SECTION
 FL ELEV.=1330.50

N 20561.89 E 20463.40
 STA. 0+00.00 SWS LINE 3
 BL STA. 10+52.84, 34.53' RT
 BEGIN 18" RCP CULVERT W/ END SECTIONS.
 PLACE 17 S.Y. RIP RAP
 FL ELEV.=1325.15

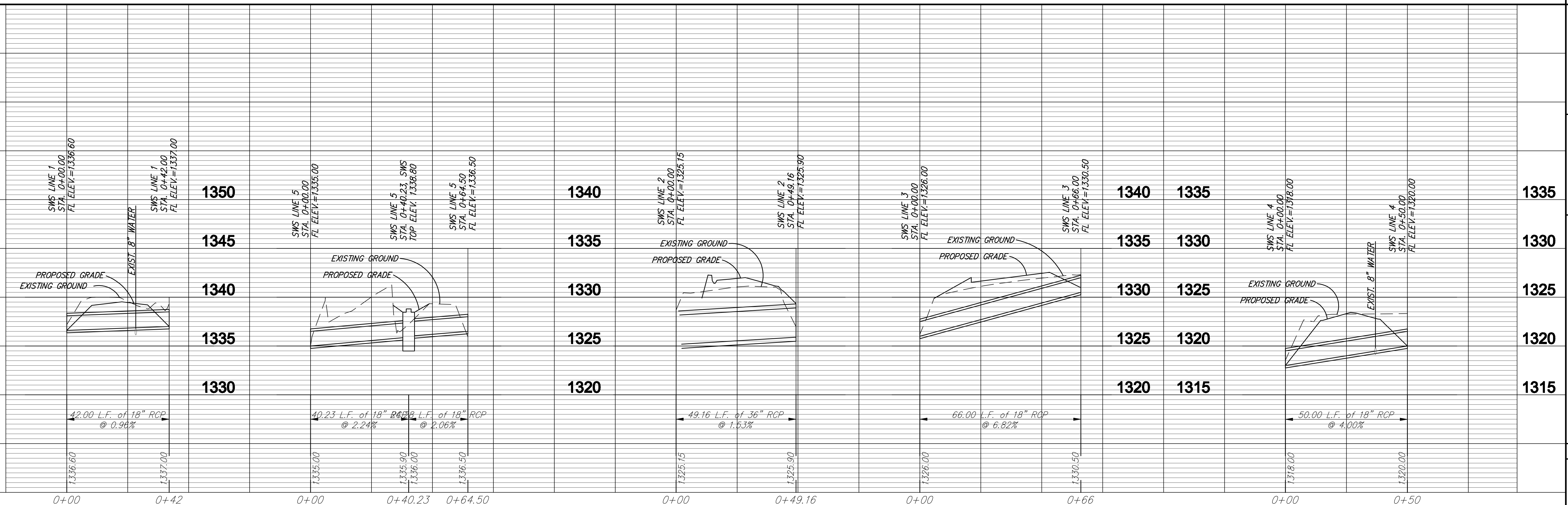
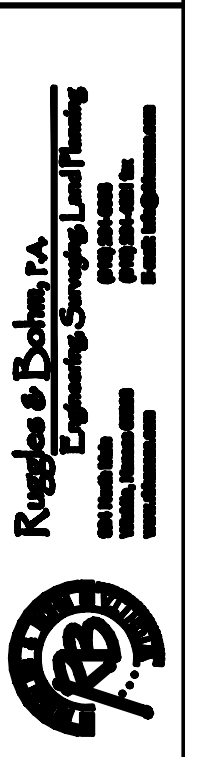
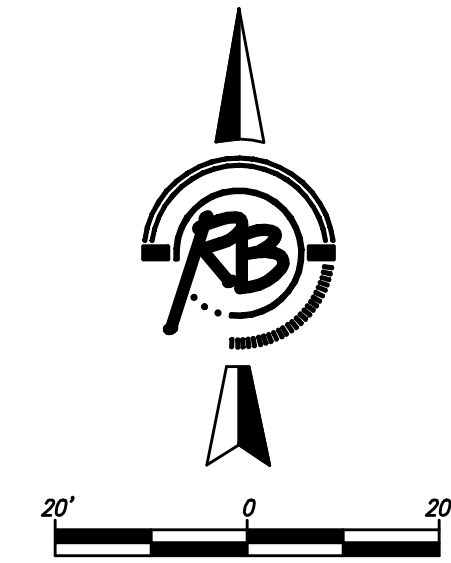
N 20537.29 E 20475.21
 STA. 0+00.00 SWS LINE 2
 BL STA. 35+44.56, 26.47' RT
 BEGIN 36" RCP CULVERT. CONSTRUCT
 CONC. HEADWALL W/ 25 SY RIP RAP. MITRE
 PROP. AND EXISTING PIPE TO HEADWALL.
 FL ELEV.=1325.15

N 20488.57 E 20481.78
 STA. 0+49.16 SWS LINE 2
 BL STA. 35+28.72, -20.04' LT
 END 36" RCP CULVERT.
 FL ELEV.=1325.90

N 21045.19 E 20500.28
 STA. 0+50.00 SWS LINE 4
 BL STA. 7+96.56, 22.83' RT
 END 18" RCP CULVERT W/ END SECTIONS
 AND 23 S.Y. LIGHT STONE RIP RAP
 FL ELEV.=1320.00

N 21092.70 E 20515.87
 STA. 0+00.00 SWS LINE 4
 BL STA. 7+86.55, -26.16' LT
 BEGIN 18" RCP CULVERT W/ END SECTIONS.
 PLACE 17 S.Y. LIGHT STONE RIP RAP.
 FL ELEV.=1318.00

CAUTION! 6" WATER LINE
 CROSSING. SEE WATER LINE
 LOWERING DETAILS ON SHEET 18.



**STORM SEWER
 LINES 1-5
 WICHITA, KANSAS**

PROJECT NUMBER: 472-84718
 DRAWING TITLE: STORM SEWER
 DATE: Dec. 30, 2008
 DWG. NO. STORM BASE (17 Storm Sewer 01)

3307E
 17
 33