

DATE
BY
CHECKED
CHECKED
PLAN

DATE
BY
CHECKED
CHECKED
PROFILE

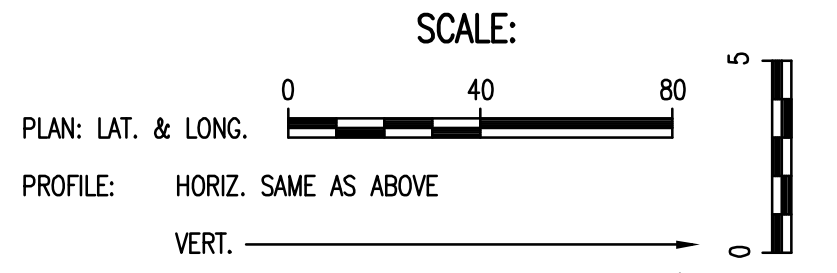
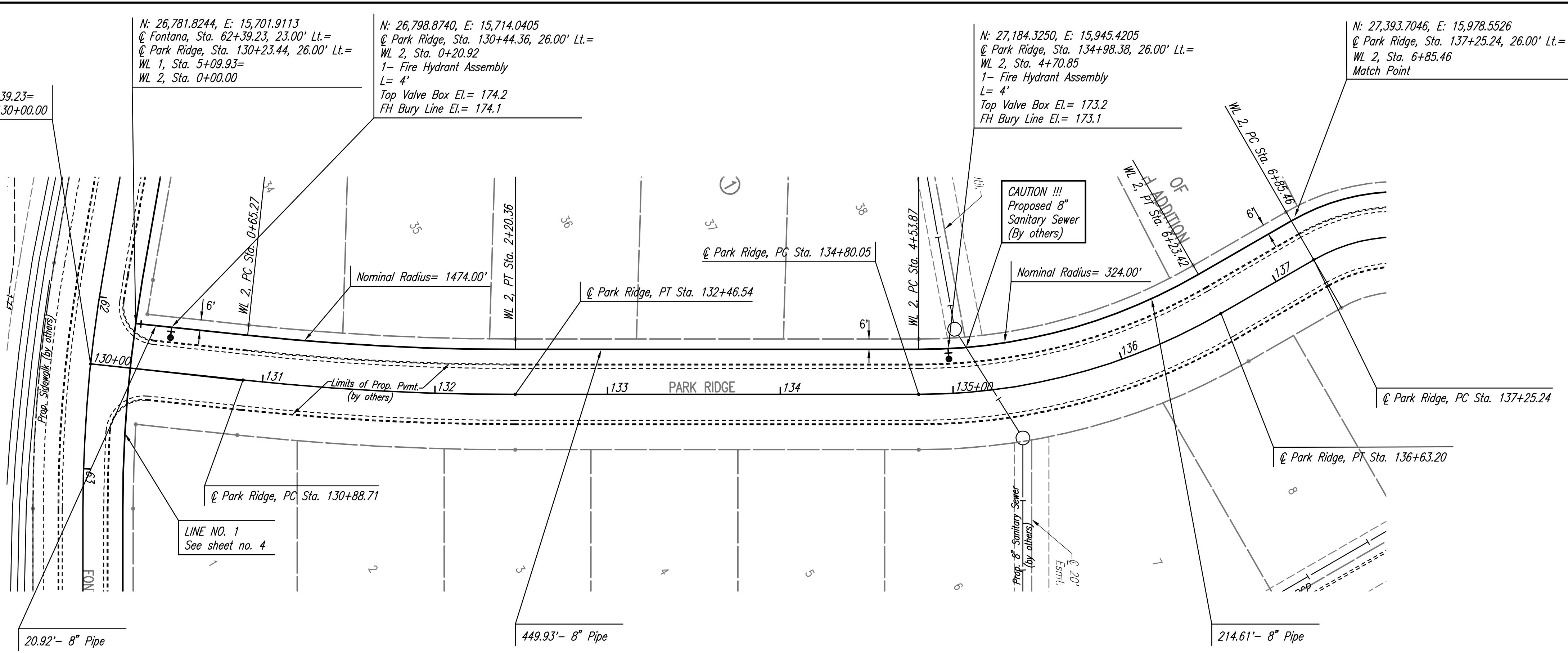
Saved: 09-01-2008 10:45:00 AM
Plot Scale: 1/8" = 1'-0"
C:\2008\08389\002\08389-002-C-WLPP02

WL CURVE DATA
 $\Delta=6^{\circ}1'43''$ Lt = 3' 53' 13.5" R = 1474.00' L = 155.09' T = 77.62' E = 2.04'
 CURVE DATA BASED ON \odot RADIUS $\Delta/2=3^{\circ}0'51.5''$

WL STATION	WL ARC LENGTH	CHORD LENGTH ON -6' OFFSET Left	DEFLECTION ANGLE	TOTAL DEFLECTION
PC 0+65.27			0°00'00.0"	0°00'00.0"
0+75.00	9.73'	9.69'	0°11'20.8"	0°11'20.8"
1+00.00	25.00'	24.90'	0°29'09.2"	0°40'30.0"
1+25.00	25.00'	24.90'	0°29'09.2"	0°79'39.2"
1+50.00	25.00'	24.90'	0°29'09.2"	0°118'48.4"
1+75.00	25.00'	24.90'	0°29'09.2"	0°157'57.6"
2+00.00	25.00'	24.90'	0°29'09.2"	0°237'06.8"
PT 2+20.36	20.36'	20.28'	0°23'44.5"	0°300'51.5"
TOTAL	L = 155.09'	Defl./ft. = 1.166129 min.		

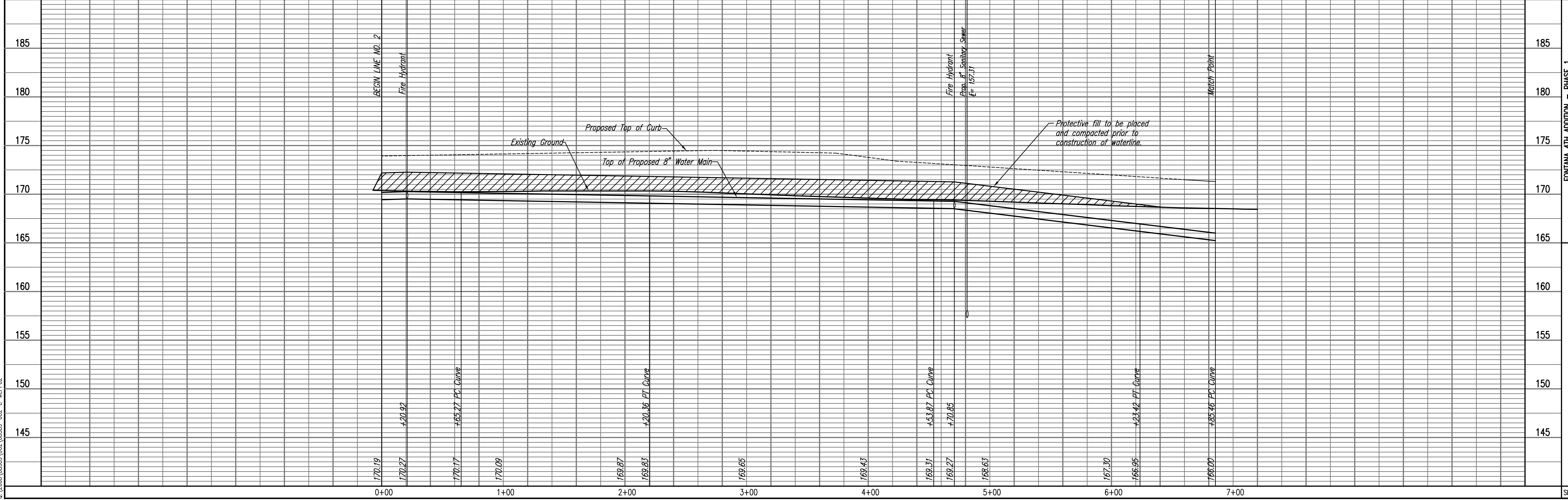
WL CURVE DATA
 $\Delta=29^{\circ}58'59''$ Lt = 17' 41' 2" R = 324.00' L = 169.55' T = 86.76' E = 11.42'
 CURVE DATA BASED ON \odot RADIUS $\Delta/2=14^{\circ}59'29.5''$

WL STATION	WL ARC LENGTH	CHORD LENGTH ON -6' OFFSET Left	DEFLECTION ANGLE	TOTAL DEFLECTION
PC 4+53.87			0°00'00.0"	0°00'00.0"
4+70.85	16.98'	16.66'	1°30'04.9"	0°13'04.9"
4+75.00	4.15'	4.07'	0°22'01.0"	0°15'25.9"
5+00.00	25.00'	24.53'	2°12'37.8"	0°44'43.6"
5+25.00	25.00'	24.53'	2°12'37.8"	0°57'21.4"
5+50.00	25.00'	24.53'	2°12'37.8"	1°10'09.2"
5+75.00	25.00'	24.53'	2°12'37.8"	1°22'47.0"
6+00.00	25.00'	24.53'	2°12'37.8"	1°35'24.8"
PT 6+23.42	23.42'	22.98'	2°04'14.8"	1°49'39.6"
TOTAL	L = 169.55'	Defl./ft. = 5.305165 min.		



Unless noted otherwise, elevations shown are top of pipe

WATERLINE NO. 2



Fontana 4th Addition - Phase 1
 WATERLINE IMPROVEMENTS
WATERLINE NO. 2
 JAMES L. ARMOUR, P.E. - CITY ENGINEER
 CITY OF WICHITA PROJECT NO. 448-90426
 Professional Engineering Consultants, P.A.
 603 E. TOPICKA AVENUE, WICHITA, KANSAS 67202
 316-262-2691 • FAX 316-262-3003
 Job No. 35-08389-002-042
 Date July 2008
 Designed By MDK
 Drawn By TLS
 Sheet 5 of 16