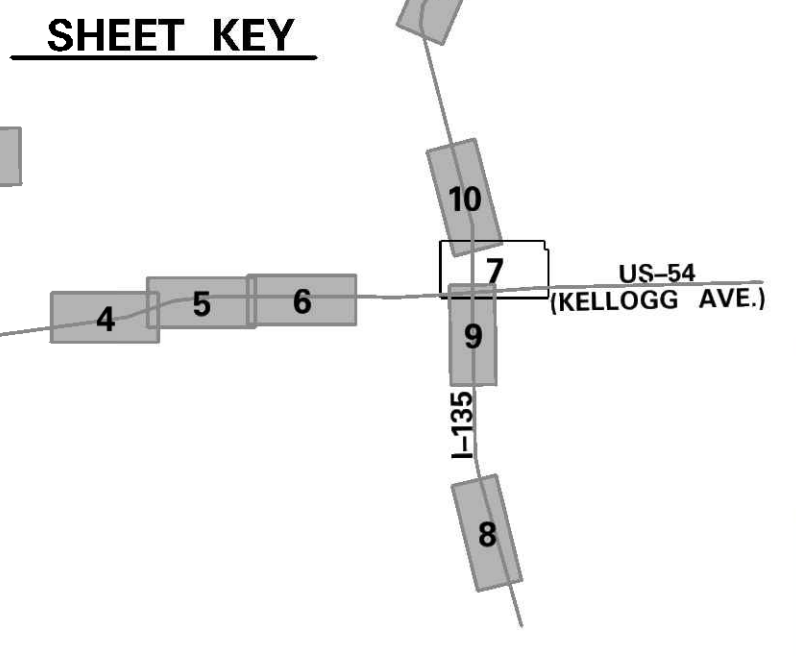
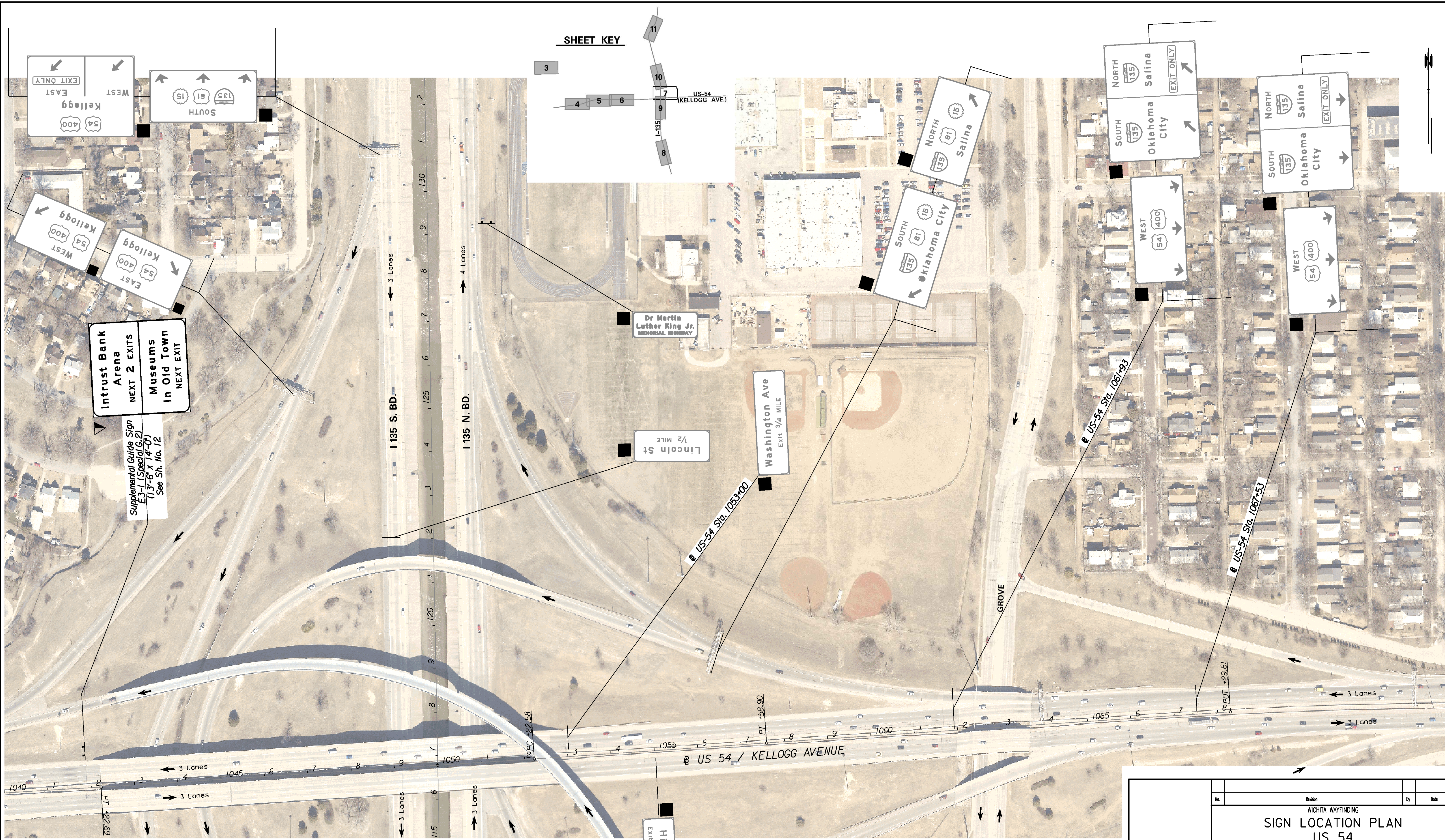
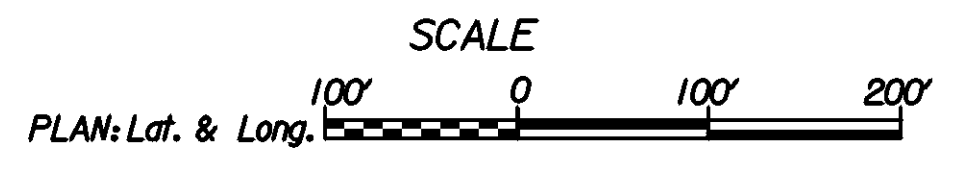


Plotted By: gdr Date: 9/17/2009 10:53:42 AM  
 FILE: i:\2009\09213\Plan\09213-Plan-Kel\_I\_135.dgn



- LEGEND**
- Existing Sign To Remain
  - Remove Existing Sign
  - ▼ Mount on Steel Beam Breakaway Post(s)



**Intrust Bank Arena**  
 NEXT 2 EXITS  
**Museums In Old Town**  
 NEXT EXIT

Supplemental Guide Sign  
 E3-1 (Special G.2)  
 (13'-6" x 14'-0")  
 See Sh. No. 12

Hillside  
 EXIT 3/4 MILE

US-54 Sta. 1053+00

US-54 Sta. 1087+93

US-54 Sta. 1067+53

PT +29.61

PT +58.90

PTC +22.58

No.	Revision	By	Date
WICHITA WAYFINDING			
<b>SIGN LOCATION PLAN</b>			
<b>US 54</b>			
JAMES L. ARMOUR, P.E. - CITY ENGINEER CITY OF WICHITA PROJECT NO. 472-84843A			
<b>Professional Engineering Consultants, P.A.</b>			
303 S. TOPEKA • WICHITA, KANSAS 67202 316-262-2691 • FAX 316-262-3003			
Designed by	DRM	Job No.	09213
Drawn by	GDR	Date	Sept. 2009
			SM. 7 of 37

