

B.G.'S 1ST ADDITION SANITARY SEWER LATERAL 532 SOUTH WEST INTERCEPTOR

Project # 468-84617
OCA NO. 744306

GENERAL NOTES

1) Contractor will be required to provide a minimum advance notice of seventy-two (72) hours to utility companies prior to starting any excavation as follows:

Kansas One-Call 687-2470

2) The Contractor must notify the following in case of an emergency:

Cox Communications	262-0661
Kansas Gas Service	1-888-482-4950
Westar	383-8600
Aquila	1-800-303-0357
AT&T	1-800-286-8313
City of Wichita Water Department	262-6000
City of Wichita Sewer Maintenance	262-6000

3) Underground utility service lines and overhead utility pole lines are to be adjusted as necessary by others prior to construction unless the plans specifically call for their adjustment by the Contractor or unless the plans specifically identify a utility to be adjusted by its owner during construction. Existing utilities and their location, as shown on the plans, represent the best information obtainable for design. Location information has been obtained from the various utility companies and is either from company record drawings or company-provided field locations. The Contractor will be required to work around existing utilities within the right-of-way which do not conflict with proposed construction.

4) Rubble from the removal of miscellaneous structures and excess excavation which is to be wasted shall be disposed of on sites to be provided by the Contractor. These sites shall be approved by the Engineer as to suitability, appearance and site location. Locations that, in the opinion of the Engineer, will leave an unsightly appearance will not be approved.

5) All disposal sites must be approved by the Kansas Department of Health and Environment. Material either stockpiled or disposed of in a flood plain would require a Kansas State Board of Agriculture permit. Any material dumped in waters of the United States or wetlands is subject to U.S. Corps permitting regulations. Any material buried or stockpiled beyond approved of Engineers construction limits would require additional archeological investigations unless buried in a previously approved borrow location.

6) The Contractor shall give all property owners and/or tenants of developed property directly abutting the construction of this project a minimum of ten (10) days advance notice prior to start of construction.

7) The Contractor shall be responsible for preserving property irons. The Contractor will be required to re-establish any property irons which are damaged or destroyed by his construction operations. Such irons shall be re-established by a licensed land surveyor in accordance with state laws.

8) The contractor is responsible for the disposal of any trees or tree limbs associated with construction.

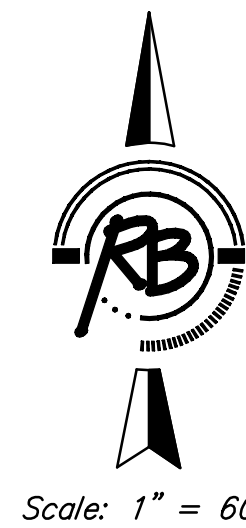
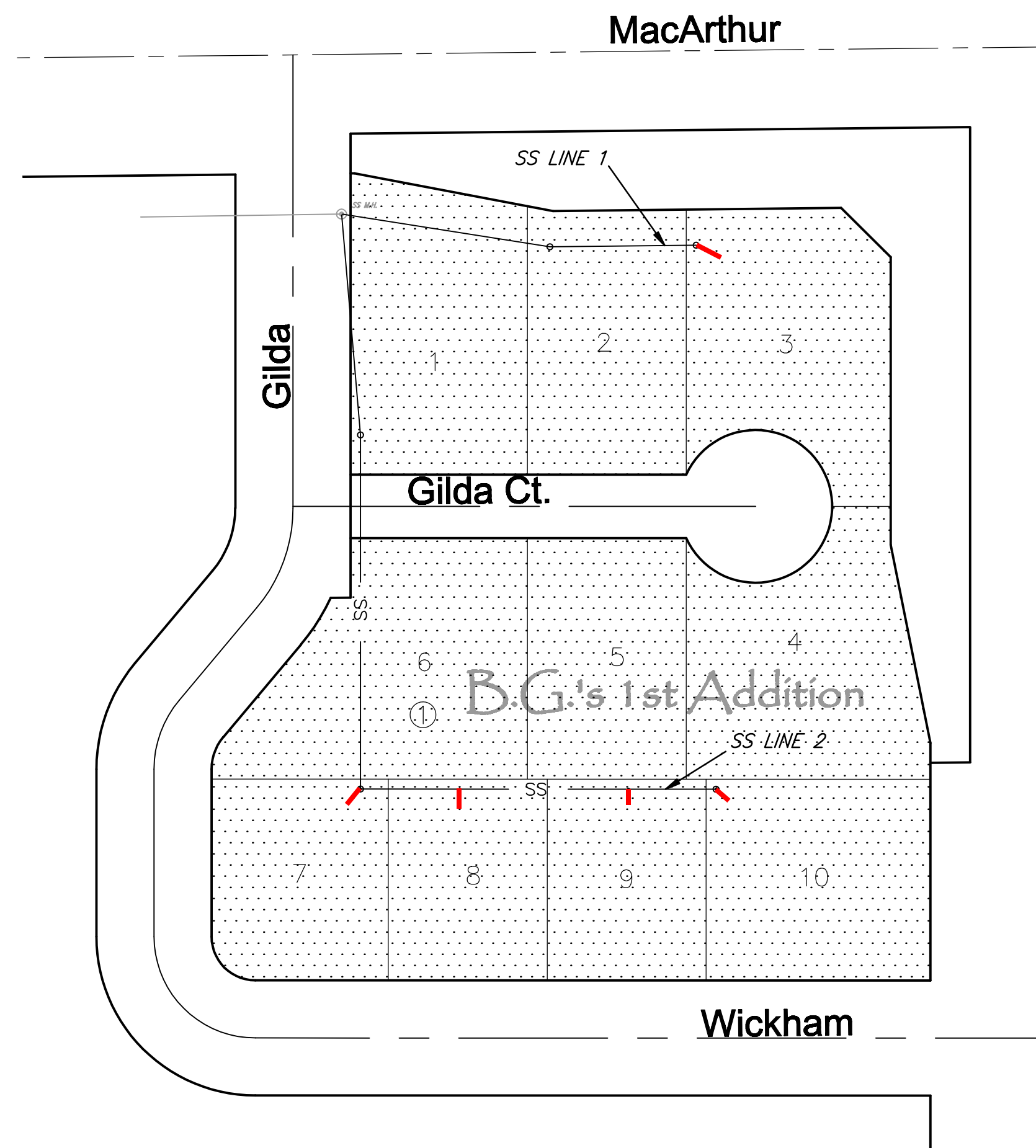
9) All existing on-site rubble or/and trees and shrubs in conflict with construction areas are to be removed and disposed of by Contractor. Bid item subsidiary to "Site Clearing and Restoration".

BENCHMARKS

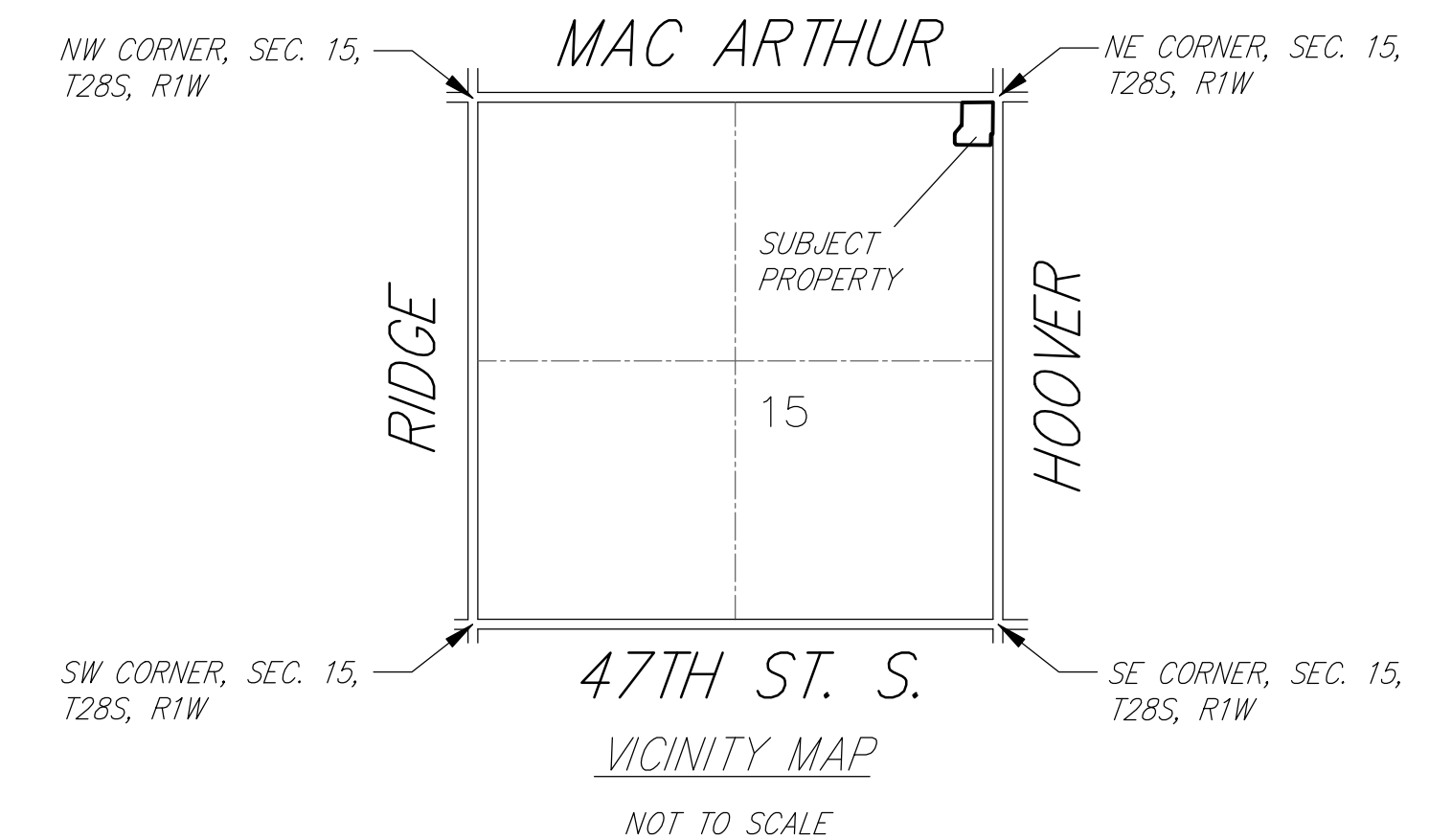
CHISELED SQUARE ON TOP OF CURB AT THE LOT LINE COMMON TO LOTS 8 AND 9, BLOCK 1, B.G.'S 1ST ADDITION, ELEVATION = 1312.69 (NAVD88)

INDEX

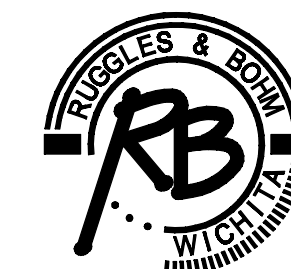
1. TITLE SHEET
2. LINE 1 & 2 SANITARY SEWER PLAN/PROFILE
3. STANDARD TYPE 'P' MANHOLE DETAIL
4. RISER DETAILS
5. RING AND COVER DETAILS
6. EROSION CONTROL PLAN
- 7-11. EROSION CONTROL DETAILS
12. FINAL PLAT



Duling Construction - Contractor
M. Sholander - City of Wichita, Inspector
As-built
Release Date: 09/21/2009
Stubs and Risers
pdf: APROSas 09/21/2009



CITY OF WICHITA, KANSAS
JAMES ARMOUR, P.E. - CITY ENGINEER



Ruggles & Bohm, P.A.
Engineering, Surveying, Land Planning
924 North Main (316) 264-8008
Wichita, Kansas 67203 (316) 264-4621 fax
www.rbkansas.com E-mail: info@rbkansas.com