

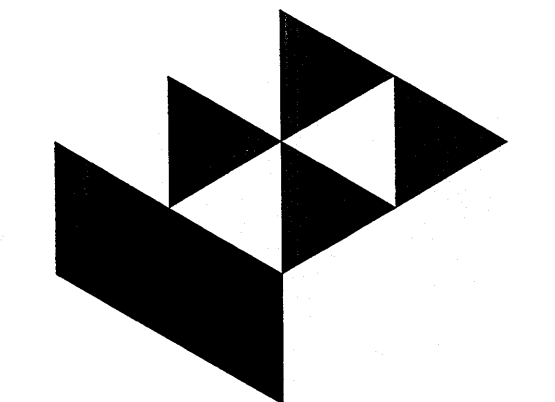
APPROVED AS NOTED
 BY CITY ENGINEER OF WICHITA,
 BY WICHITA WATER & SEWER DEPARTMENT,
 & BY WICHITA FIRE DEPARTMENT

Public Works: Shan Muller 8-5-09
 Water & Sewer
 Fire

NOTE TO CONTRACTORS
Public Property:
 Inspection and testing for the waterline is to be provided by a Licensed Consulting Engineering Firm under contract with the Owner/Developer. Said inspection to be in accordance with the City of Wichita standard construction engineering practices and certified by a Professional Engineer Licensed in the state of Kansas. No work shall be performed in dedicated easements or public right-of-way by the Contractor until such inspection is arranged for and required bonds have been submitted and approved by the City nor shall any work be commenced without written authorization by the City Engineer. All Construction and Materials shall comply with the City or Wichita Specifications and Standards (on file and available in the City Engineer's Office).

Private Property:
 Installation and testing for the fire protection line is to be performed by a City of Wichita licensed fire protection contractor in accordance with the fire codes as adopted by the City of Wichita. All material and construction practices for the fire protection line shall comply with the fire codes as adopted by the City of Wichita (available from the City of Wichita Fire Department). The Contractor shall not commence work without notification and approval of the Wichita Fire Department. Inspection of the fire protection line is to be provided by a licensed Engineering Firm under contract with the Owner/Developer and the Fire Department. The contractor shall not start work until the project inspector is assigned to the project and present on the site. Any work done without inspection will be required to be uncovered for inspection.

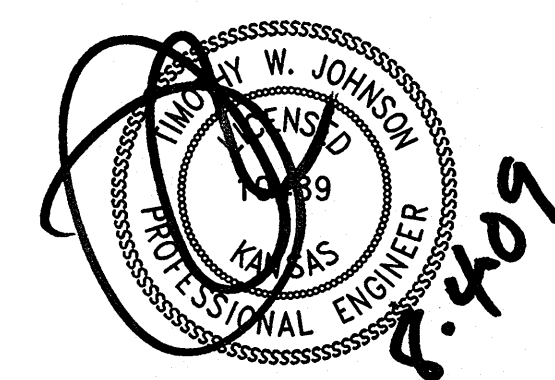
Improvements performed under this project may not be accepted by the City of Wichita until all applicable documentation has been submitted to the City Engineer. This may include: record drawings, inspection logs, test documentation, tv tapes, and a certificate of completion. The above shall be performed by the Consulting Firm contracted to inspect this project.



Gossen Livingston
 Architecture
 420 South Emporia
 Wichita, KS 67202
 Tel: (316) 265-9367
 Fax: (316) 265-5646
 Email: architects@glj.com



Johnson & Associates, Inc.
 100 E. California Ave. - Third Floor
 Oklahoma City, OK 73104
 (405) 235-9075 FAX (405) 235-8078
 Certificate of Authorization #E-1128 EXP. DATE: 12-31-2010



© 2009 Gossen Livingston Associates, Inc.
 The drawing and all information herein is the exclusive property of Gossen Livingston Associates, Inc. and is not to be copied or used in any way without the express written consent of Gossen Livingston Associates, Inc. All drawings, specifications, ideas, designs and arrangements appearing herein constitute the original and unpublished work of Gossen Livingston Associates, Inc.

PLAN:
 SCALE: 1"=20'
 PROFILE:
 SCALE: 1"=20' (HORIZ.)
 1"=4' (VERT.)

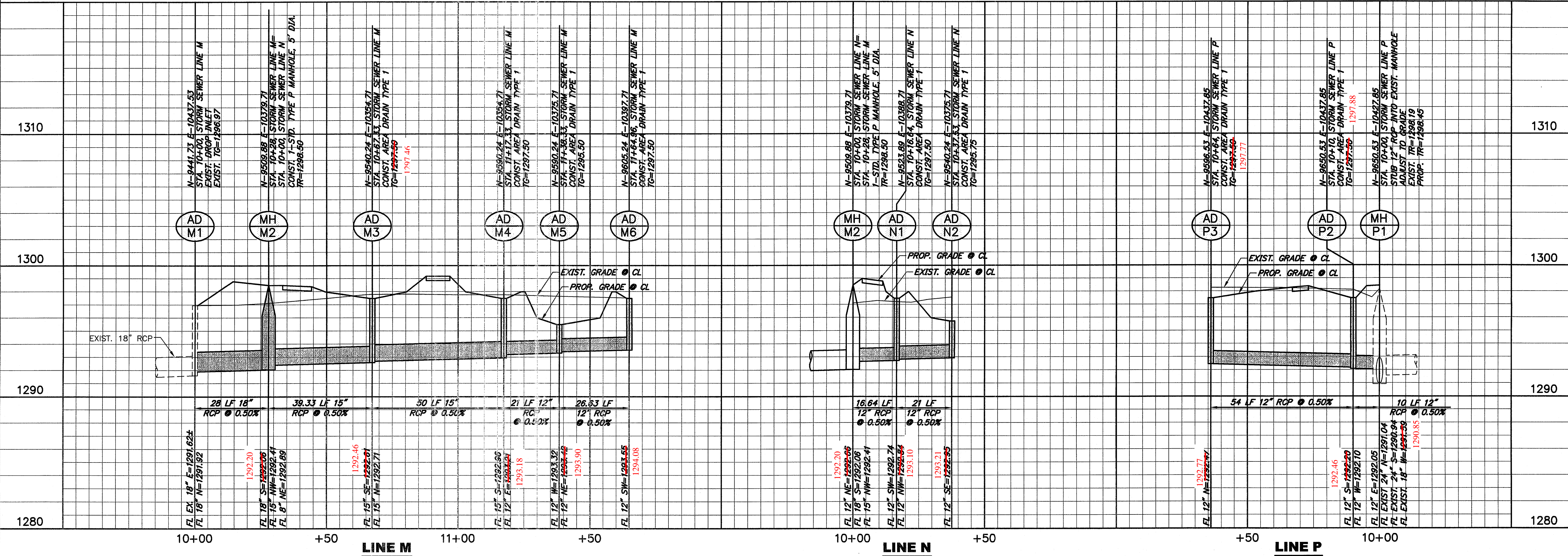
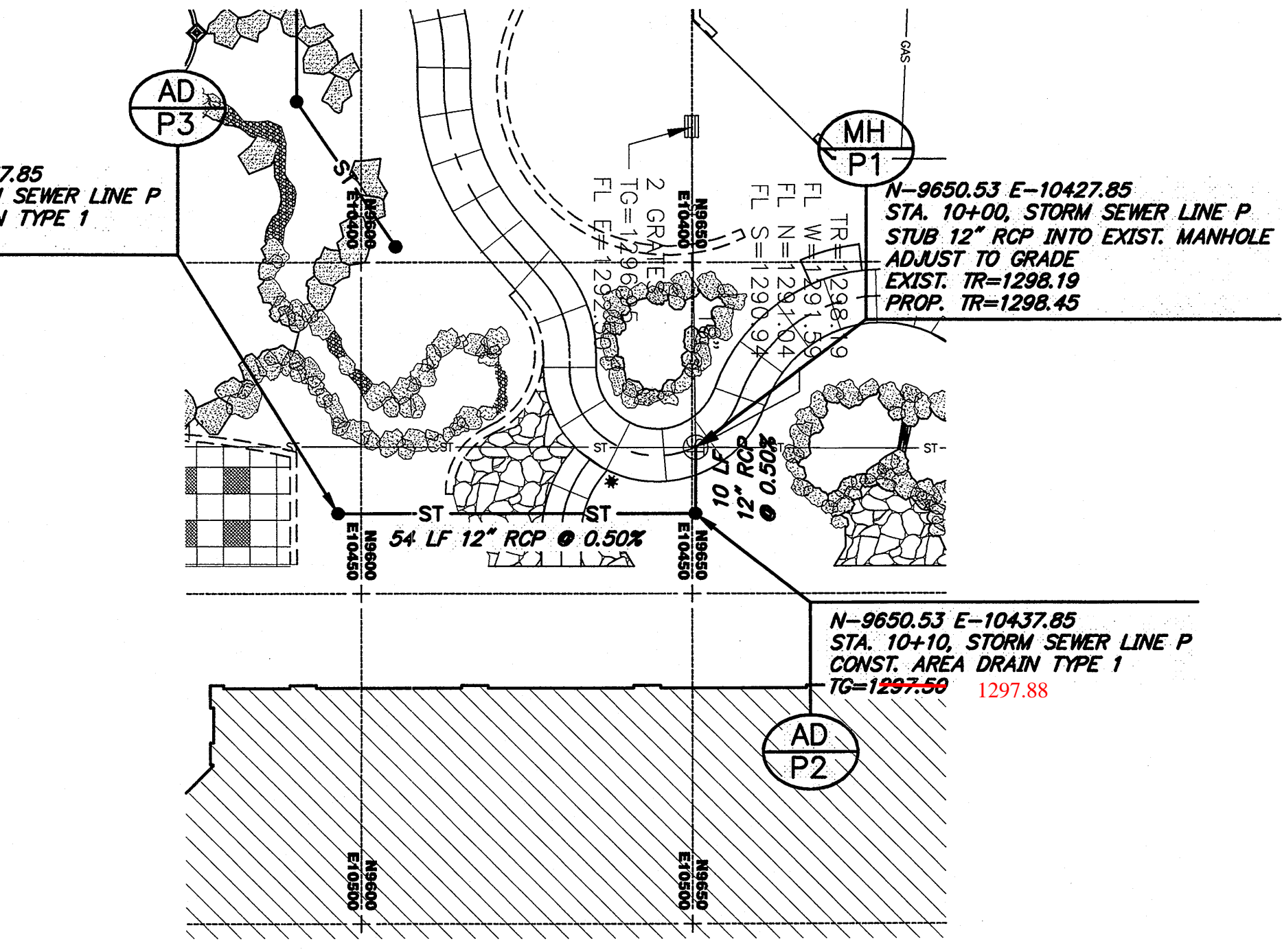
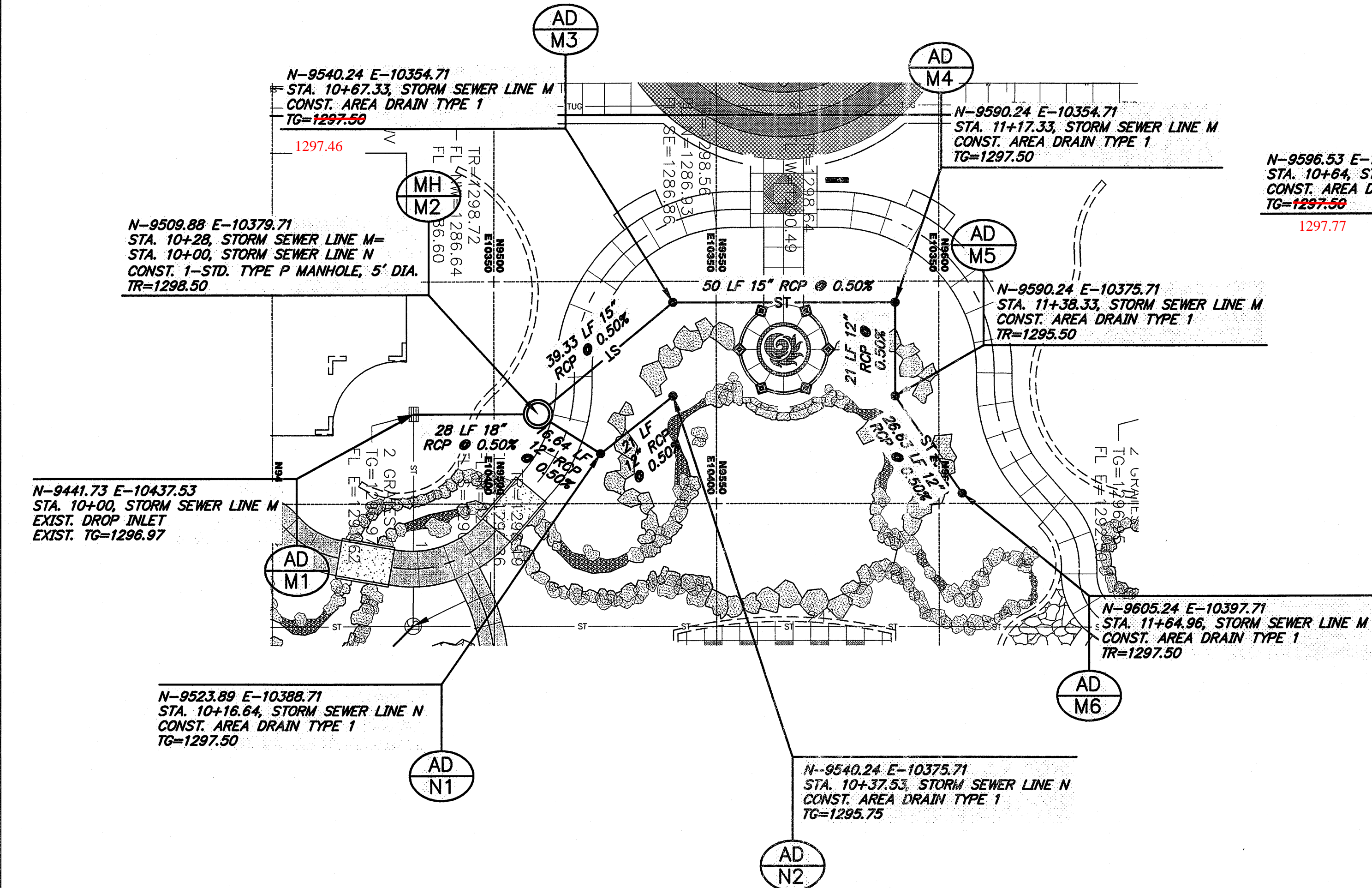
WICHITA
WATERWALK

PUBLIC IMPROVEMENTS - PARCEL 1
STORM SEWER PLAN & PROFILE
LINE M N & P

Mark	Date	Description
2	8-03-09	CITY REVIEW
1	7-27-09	CITY REVIEW

STORM SEWER PLAN & PROFILE
LINE M N & P

Job No.	ST2.3
Date	6-12-09
Drawn	B.C.
Checked	P.B.
	Dwg. 21 of XX



15\2215 Ph 2\2215013 Ph 2 HSE\2215013-STORM.dwg, LoyoukH, 8/3/2009 3:44:33 PM, Plotted by: B.C.