

WATER DISTRIBUTION SYSTEM IMPROVEMENTS

TO SERVE

BLDG. 22 AND 23 AT NEWMARKET SQUARE

LOT 1, BLOCK 1, NEWMARKET SQUARE PHASE III ADDITION

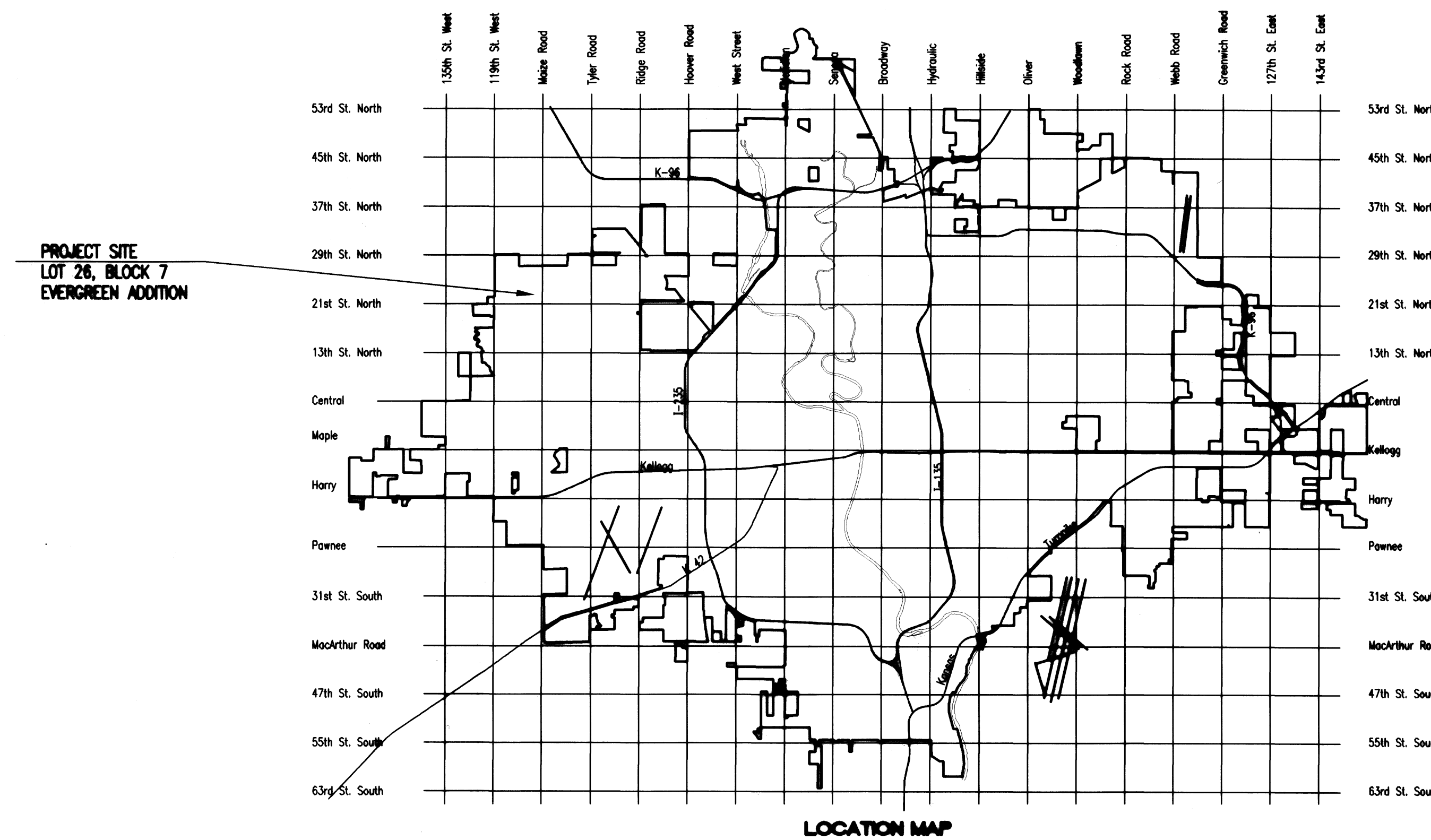
CITY OF WICHITA PROJECT NO. 1492 PPW (607853)

CITY OF WICHITA, KANSAS

JAMES L. ARMOUR, P.E. - CITY ENGINEER

INDEX OF SHEETS

SHEET NO. 4.1	TITLE SHEET
SHEET NO. 4.2	KEY MAP AND GENERAL NOTES
SHEET NO. 4.3	STANDARD DETAILS
SHEET NO. 4.4	PLAN/PROFILE
SHEET NO. 5.1	PLAT
SHEET NO. 2.1-2.3	SOIL EROSION BMP'S



APPROVED AS NOTED
 BY CITY ENGINEER OF WICHITA,
 BY WICHITA WATER UTILITIES,
 & BY WICHITA FIRE DEPARTMENT

Water Mains (Public Works) *[Signature]* 8/19/09
 Water Mains (Water Utilities) *[Signature]* 8/19/09
 Fire Prot. Line *[Signature]* W.F.D. 8-19-09

NOTE TO CONTRACTORS

PUBLIC PROPERTY:
 Inspection and testing for the waterline is to be provided by a Licensed Consulting Engineering Firm under contract with the Owner/Developer. Said inspection to be in accordance with the City of Wichita standard construction engineering practices and certified by a Licensed Professional Engineer licensed in the State of Kansas. No work shall be performed in dedicated easements or public right-of-way by the Contractor without such inspection nor shall any work be commenced without written authorization by the City Engineer. All Construction and Materials shall comply with the City of Wichita Specifications and Standards (on file and available in the City Engineer's Office).

PRIVATE PROPERTY:
 Installation and testing for the fire protection line is to be performed by a City of Wichita licensed fire protection contractor in accordance with the fire codes as adopted by the City of Wichita. All materials and construction practices for the fire protection line shall comply with the fire codes as adopted by the City of Wichita (available from the City of Wichita Fire Department). The Contractor shall not commence work without notification and approval of the Wichita Fire Department.
 Inspection of the fire protection line is to be provided by the City of Wichita Fire Department and by a licensed Consulting Engineering Firm under contract with the Owner/Developer.
 The contractor shall not start work until the project inspector is assigned to the project and present on the site. Any work done without inspection will be required to be uncovered for inspection.

As Built Plans:
 CONTRACTOR: Ewertz Exc.
 INSPECTOR: Larry Gann,
 COMPANY: K E Miller Engineering
 .PDF by: LGG, 11-19-09

AUGUST 2009
 PLANS PREPARED BY
PROFESSIONAL ENGINEERING CONSULTANTS, P.A.
 ENGINEERS
 WICHITA, KANSAS

