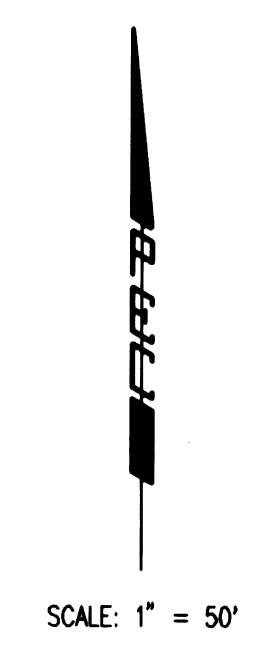
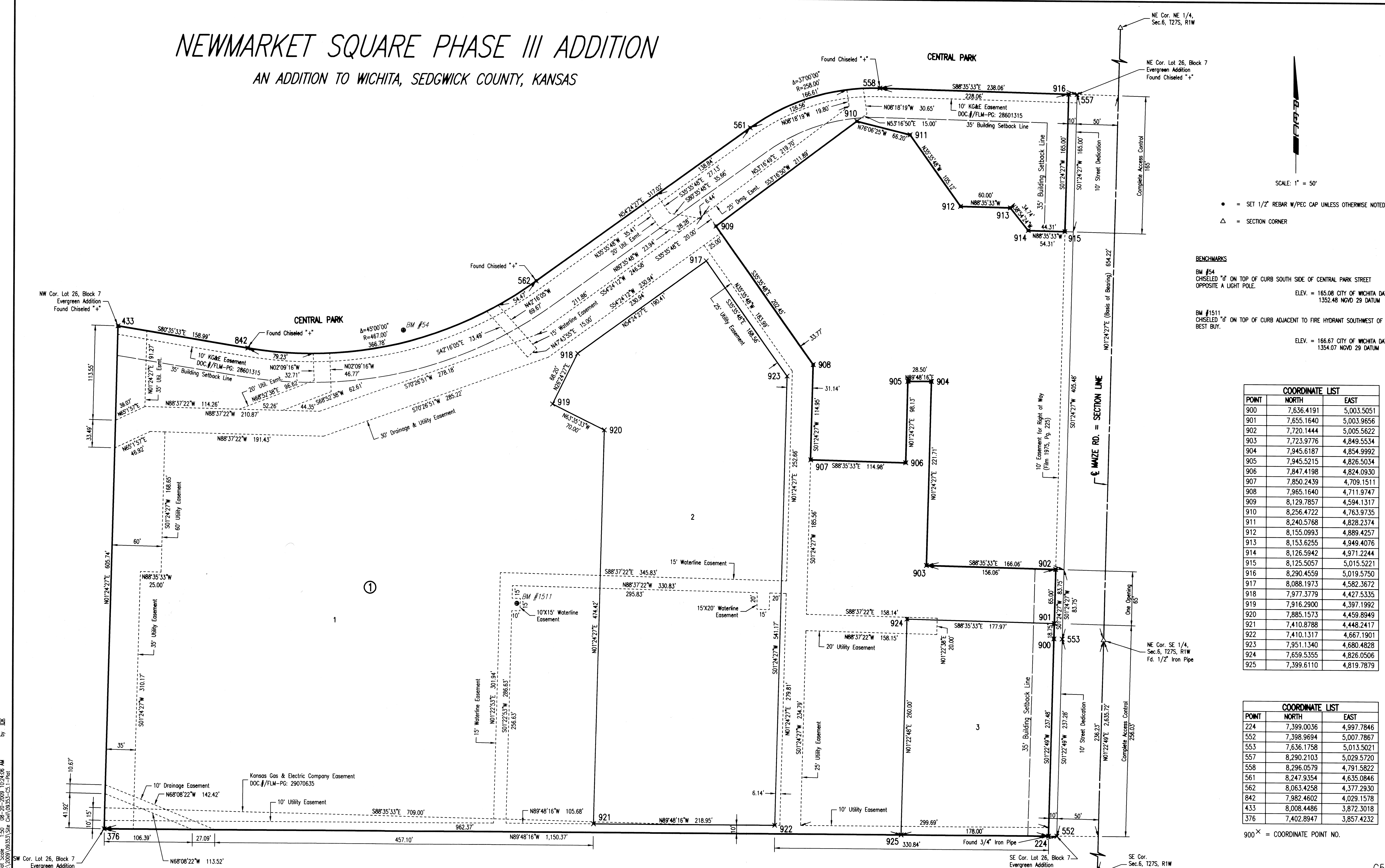


NEWMARKET SQUARE PHASE III ADDITION

AN ADDITION TO WICHITA, SEDGWICK COUNTY, KANSAS



• = SET 1/2" REBAR W/PEC CAP UNLESS OTHERWISE NOTED
 Δ = SECTION CORNER

BENCHMARKS
 BM #54
 CHISELED "d" ON TOP OF CURB SOUTH SIDE OF CENTRAL PARK STREET
 OPPOSITE A LIGHT POLE.
 ELEV. = 165.08 CITY OF WICHITA DATUM
 1352.48 NGVD 29 DATUM

BM #1511
 CHISELED "d" ON TOP OF CURB ADJACENT TO FIRE HYDRANT SOUTHWEST OF
 BEST BUY.
 ELEV. = 166.67 CITY OF WICHITA DATUM
 1354.07 NGVD 29 DATUM

COORDINATE LIST		
POINT	NORTH	EAST
900	7,636.4191	5,003.5051
901	7,655.1640	5,003.9656
902	7,720.1444	5,005.5622
903	7,723.9776	4,849.5534
904	7,945.6187	4,854.9992
905	7,945.5215	4,826.5034
906	7,847.4198	4,824.0930
907	7,850.2439	4,709.1511
908	7,965.1640	4,711.9747
909	8,129.7857	4,594.1317
910	8,256.4722	4,763.9735
911	8,240.5768	4,828.2374
912	8,155.0993	4,889.4257
913	8,153.6255	4,949.4076
914	8,126.5942	4,971.2244
915	8,125.5057	5,015.5221
916	8,290.4559	5,019.5750
917	8,088.1973	4,582.3672
918	7,977.3779	4,427.5335
919	7,916.2900	4,397.1992
920	7,885.1573	4,459.8949
921	7,410.8788	4,448.2417
922	7,410.1317	4,667.1901
923	7,951.1340	4,680.4828
924	7,659.5355	4,826.0506
925	7,399.6110	4,819.7879

COORDINATE LIST		
POINT	NORTH	EAST
224	7,399.0036	4,997.7846
552	7,398.9694	5,007.7867
553	7,636.1758	5,013.5021
557	8,290.2103	5,029.5720
558	8,296.0579	4,791.5822
561	8,247.9354	4,635.0846
562	8,063.4258	4,377.2930
842	7,982.4602	4,029.1578
433	8,008.4486	3,872.3018
376	7,402.8947	3,857.4232

900^x = COORDINATE POINT NO.

Saved 08-19-2009 2:20:12 PM by IDK
 Plot Scale: 1" = 50'
 08-20-2009 10:24:06 AM
 C:\Users\IDK333\OneDrive\Projects\NewMarket\NewMarket.dwg