

BENCHMARK:  
 BM #5 - "C" Chiseled in the Back of Curb in the North Curb  
 Line of 43rd Street South  
 Sta. 124+50, 98' Lt.  
 Elev. = 1281.40 MSL

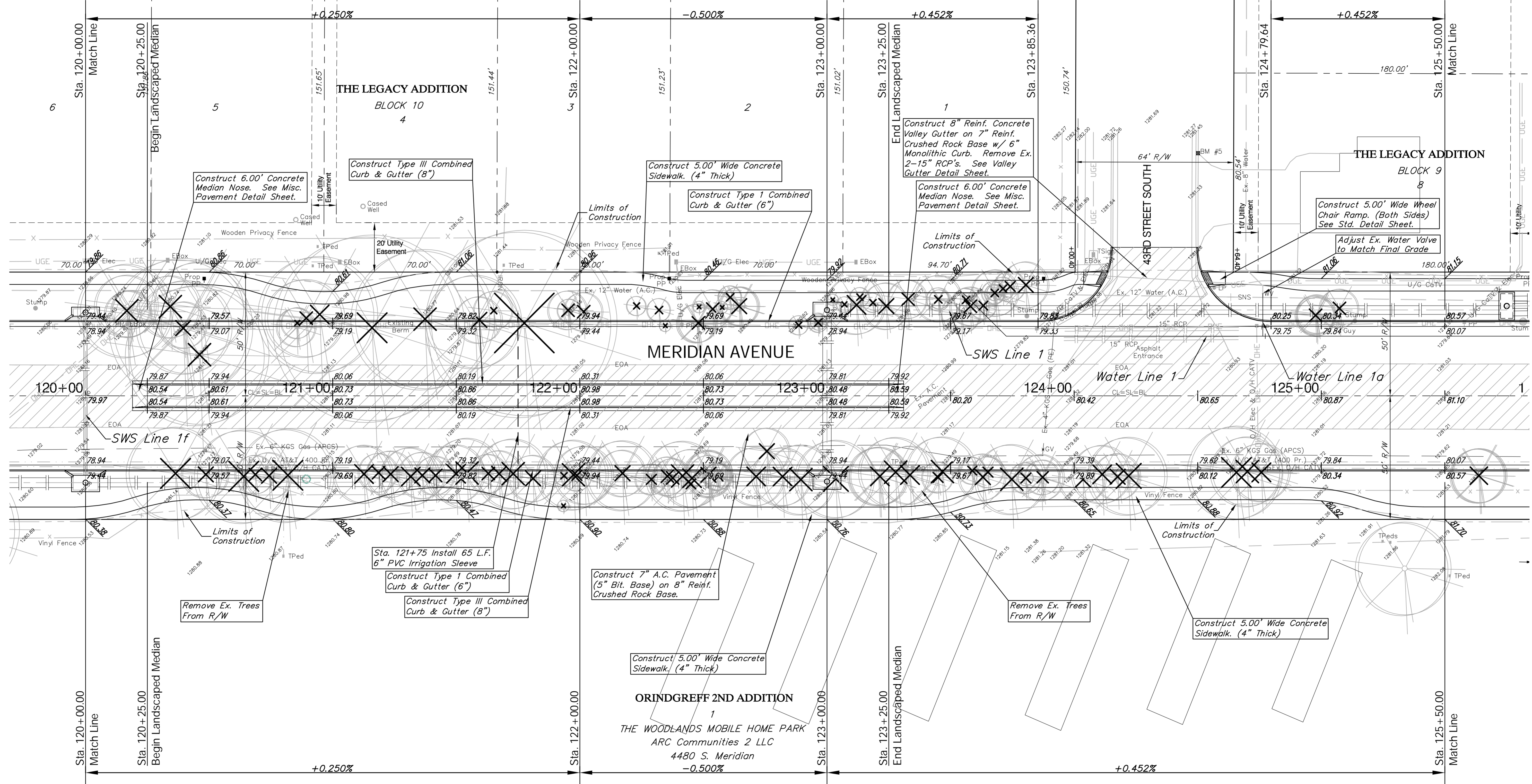
SCALE: 1" = 20'  
 0 10 20

P.V.I.  
 No V.C.  
 Elev. = 1279.44

P.V.I.  
 No V.C.  
 Elev. = 1279.94

P.V.I.  
 No V.C.  
 Elev. = 1279.44

P.V.I.  
 No V.C.  
 Elev. = 1280.57



P.V.I.  
 No V.C.  
 Elev. = 1279.44

P.V.I.  
 No V.C.  
 Elev. = 1279.94

P.V.I.  
 No V.C.  
 Elev. = 1279.44

P.V.I.  
 No V.C.  
 Elev. = 1280.57

Note:  
 Trees/Shrubs to be removed are marked thus:

Existing Mailboxes that Conflict with the Proposed Construction Shall be Removed and Reset on Non-Hazardous Supports. Cost to be SUBSIDIARY to "Site Restoration."

Note:  
 Pavement, Sidewalks, and Etc. To Be Removed Are Indicated By:

Drawing File: E:\eng\Meridian\_47th to 31st\Land\dwg\Base.dwg (Pav04)  
 Project No. 0510E396 CAPITAL IMPROVEMENT PROJECT  
 Design: TPV  
 Drawn: STAFF  
 Approved: TPV  
 Scale: NOTED

MERIDIAN AVENUE PAVING  
 Sta. 120+00.00 to Sta. 125+50.00  
 MERIDIAN AVENUE - 47TH STREET SOUTH TO 31ST STREET SOUTH

**Baughman Company, P.A.**  
 315 Ellis St., Wichita, KS 67211 P 316-262-7171 F 316-262-0149  
 ENGINEERING | SURVEYING | PLANNING | LANDSCAPE ARCHITECTURE

September 2009  
 SHEET  
 21  
 OF  
 187