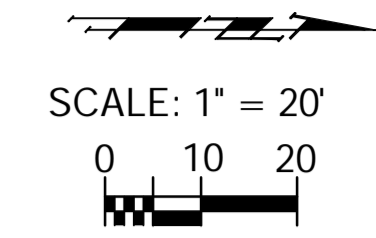
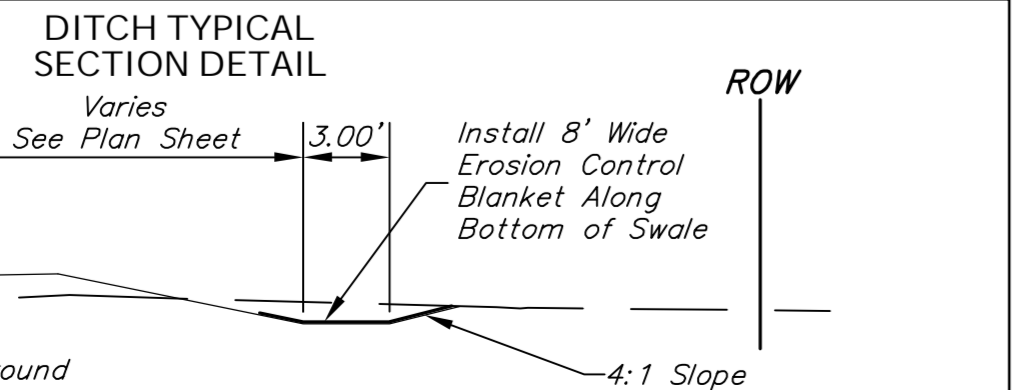
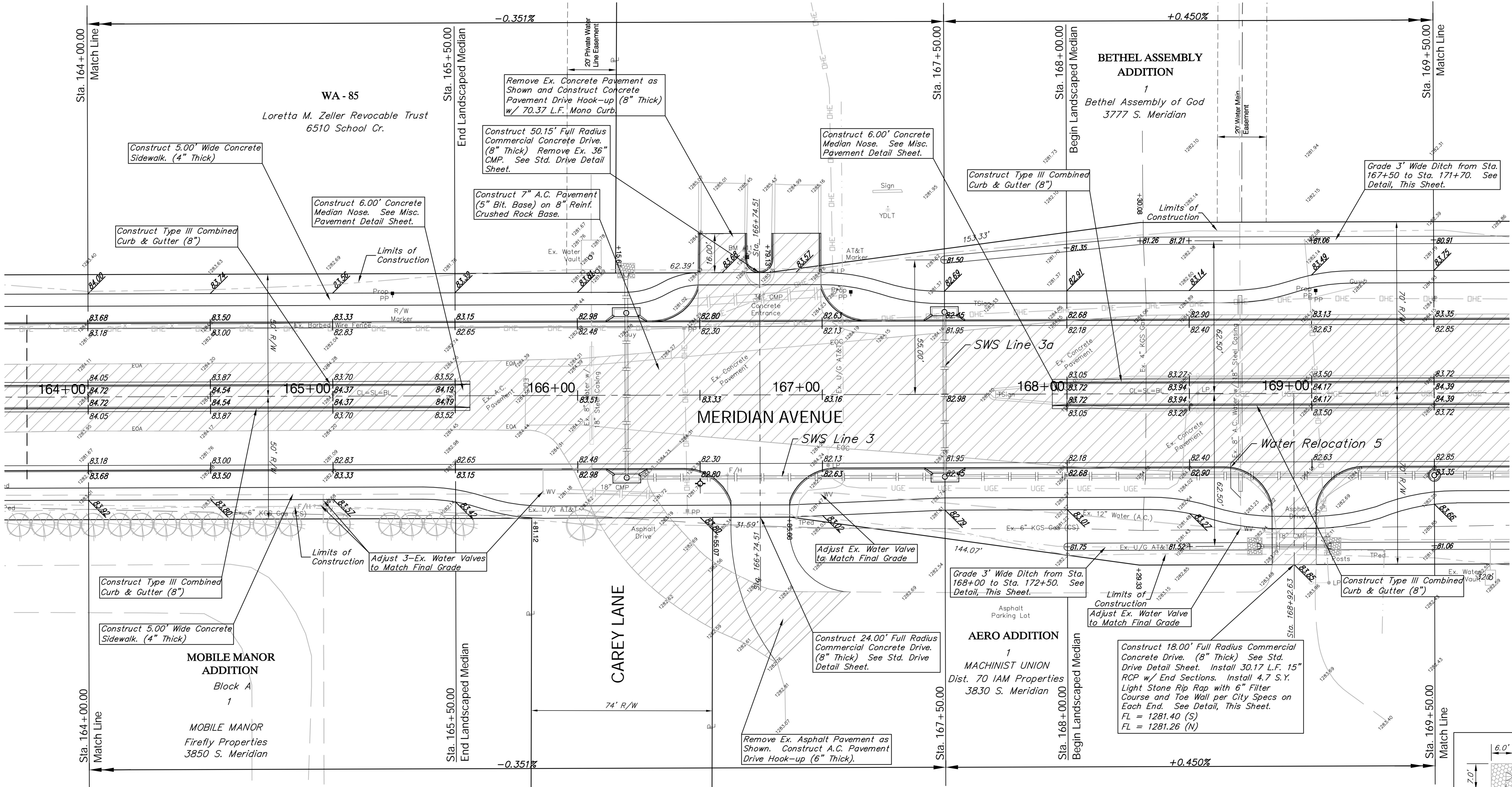


BENCHMARK:
 BM #11 - "C" Chiseled in the Top of the Curb on the South Side of Median at Church Entrance
 Sta. 166+69, 56' Lt.
 Elev. = 1285.34 MSL

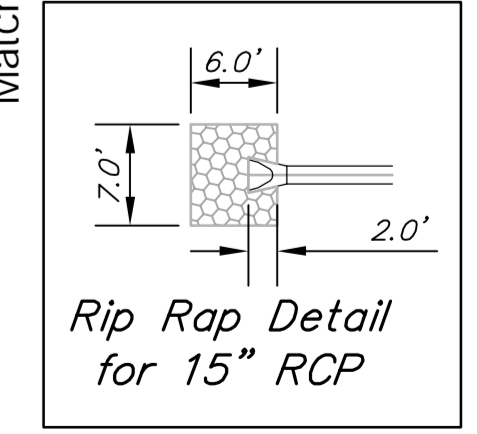


Remove Ex. Steel Light Pole at Sta. 167+02, 29' Rt. & Deliver to the KDOT Yard at 3200 E. 45th Street N. Contact Ben Koerner with KDOT at 744-1271 for more information. Cost to be SUBSIDIARY to the Bid Item "Transportation of Salvage Material".

P.V.I.
 No V.C.
 Elev. = 1282.45



Note:
 Pavement, Sidewalks, and Etc. To Be Removed Are Indicated By:



Drawing File: E:\eng\Meridian_47th to 31st\Land\dwg\Base.dwg (Pav12)
 Project No. 0510E396 CAPITAL IMPROVEMENT PROJECT
 Design: TPV
 Drawn: STAFF
 Approved: TPV
 Scale: NOTED

Baughman Company, P.A.
 315 Ellis St., Wichita, KS 67211 P 316-262-7171 F 316-262-0149
 ENGINEERING | SURVEYING | PLANNING | LANDSCAPE ARCHITECTURE

September 2009
 SHEET
 OF 29
 187

MERIDIAN AVENUE PAVING
 Sta. 164+00.00 to Sta. 169+50.00
 MERIDIAN AVENUE - 47TH STREET SOUTH TO 31ST STREET SOUTH