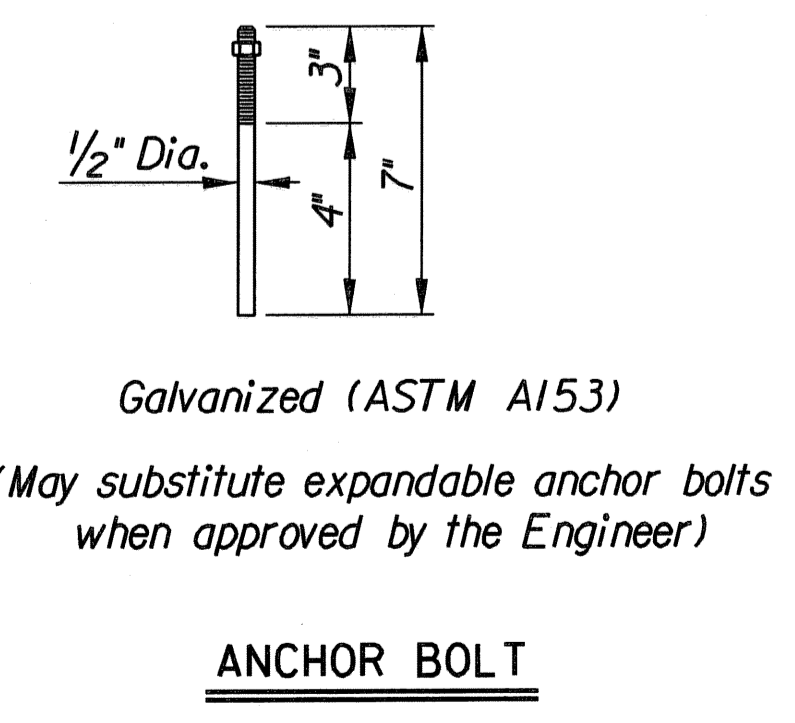
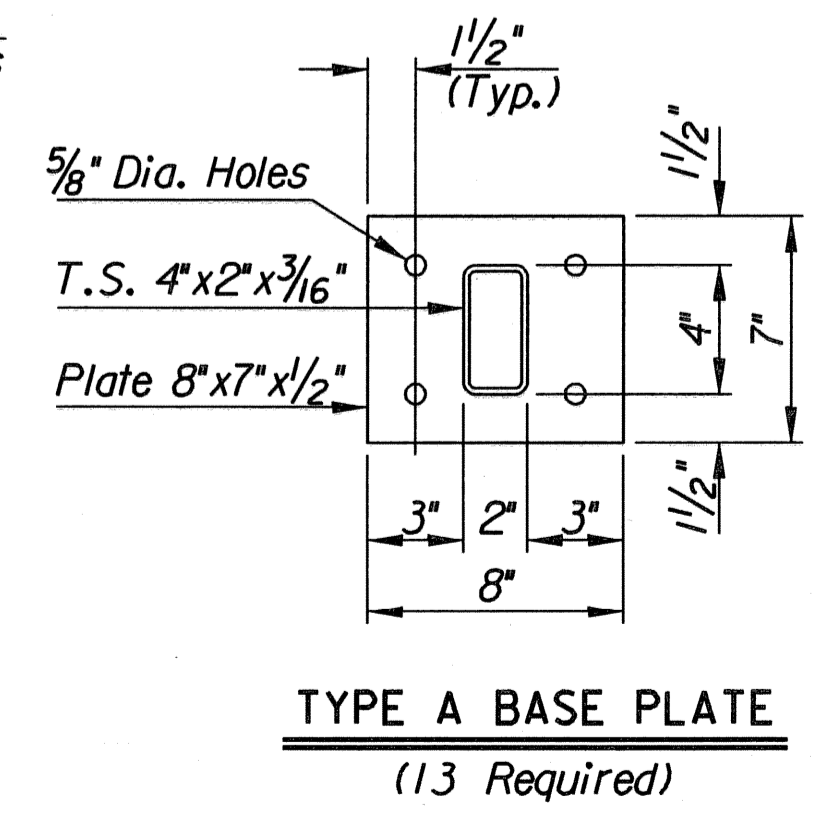
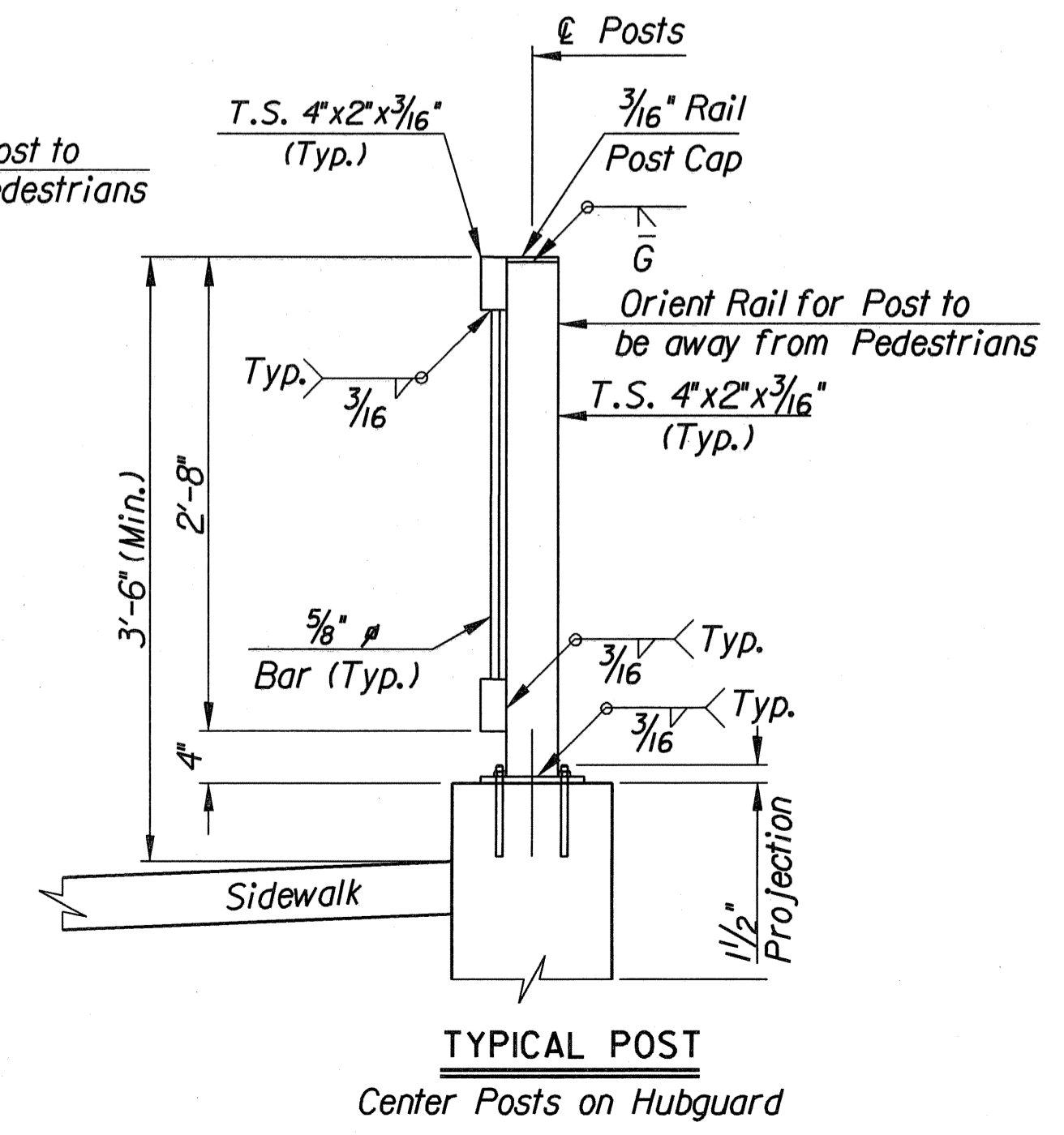
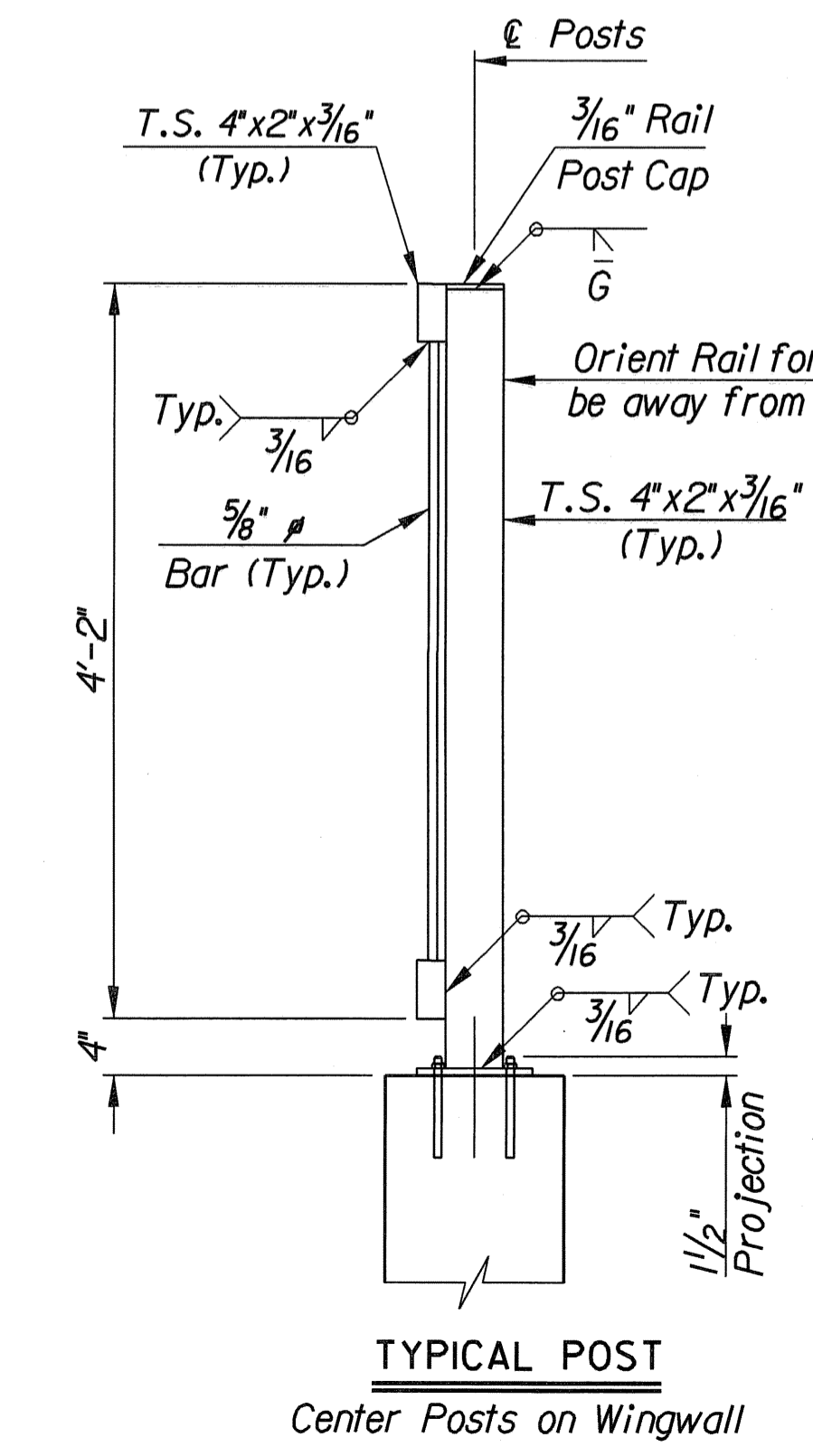
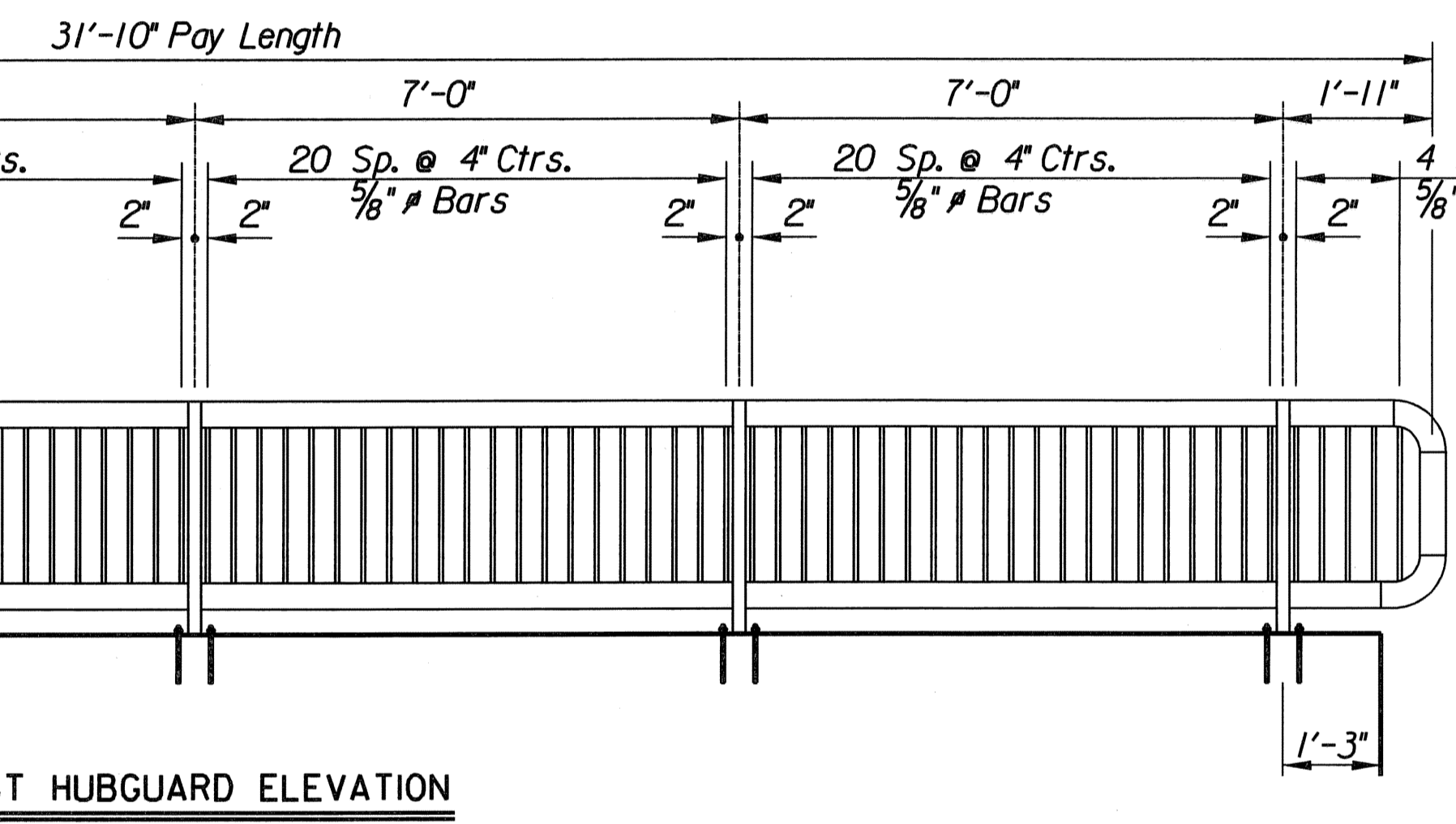
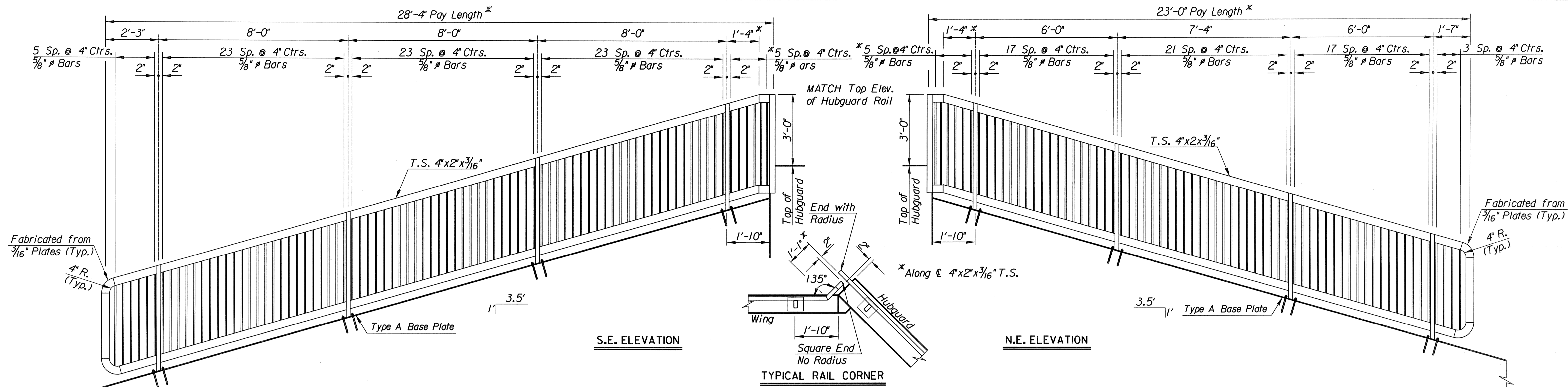


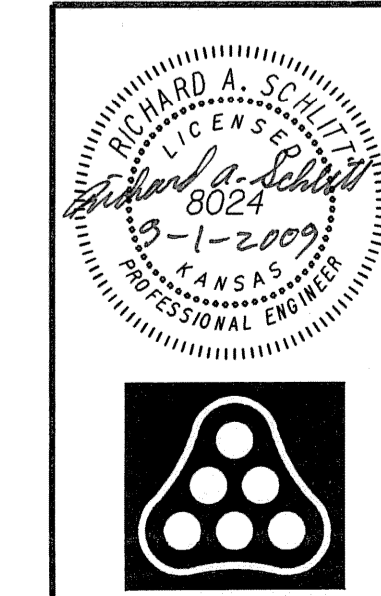
Plotted By: rjm Date: 9/1/2009 2:05:46 PM  
 FILE: I:\2009\09248\meridian\235\_PedRail.dgn



**GENERAL NOTES**

The horizontal members of the Rail and Posts shall be hollow structural tubing. All structural steel tubing shall comply to A.S.T.M. designation A36 or A500 Grade B respectively. Rail shall be fabricated in lengths as shown from joint to joint and end. Post and Bars shall be set vertical and shimmed if required. Prior to painting abrasive blast to commercial finish SSPC-SP6 to obtain a surface profile of 1-1/2 Mils. The shop and field coats applied to structural steel shall conform to an inorganic Zinc Primer with water-borne Acrylic finish coat. (The finish coat shall match Carboline #C900, Ebony Black). Provide a color sample to the Engineer with shop drawing submittal. Material and construction shall conform to the structural welding code A.W.S. D1.1-01. Shop details must be submitted and approved by the Engineer.

BILL OF MATERIALS	
Handrail (Steel) (Pedestrian)	83.17 L.F.



Revision	By	Date
CITY OF WICHITA, KANSAS JAMES L. ARMOUR, P.E. - CITY ENGINEER MERIDIAN AVENUE - 47TH STREET SOUTH TO 31ST STREET SOUTH <b>PEDESTRIAN HANDRAIL DETAILS NB</b> CAPITAL IMPROVEMENT PROJECT <b>Professional Engineering Consultants, P.A.</b> 303 S. TOPEKA • WICHITA, KANSAS 67202 316-262-2691 • FAX 316-262-3003		
Designed by RJM	Job No. 09248	Sht. 48 of 187
Drawn by WLL	Date Sept. 2009	