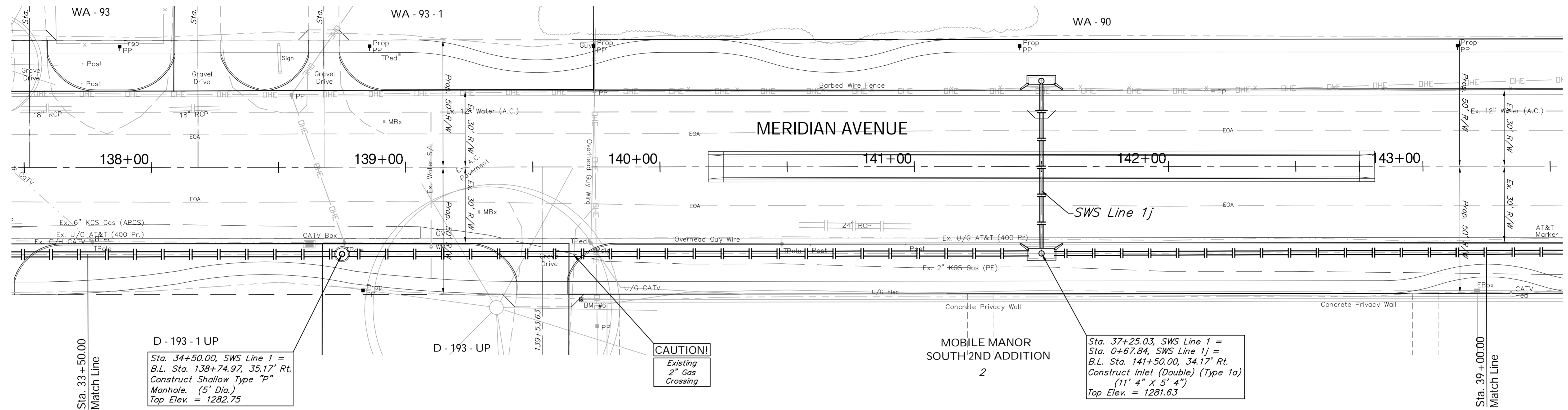


**BENCHMARK:**  
 BM #6 - "C" Chiseled in the Base at the South End of the Concrete Privacy Wall  
 Sta. 139+69, 52' Rt.  
 Elev. = 1282.88 MSL

The Existing 6" Kansas Gas Line Running Parallel to the Proposed SWS System is to Remain in Place During Construction. The Contractor Shall Contact Jim Coe with KGS at 832-3126 to Coordinate Bracing, Support, etc.

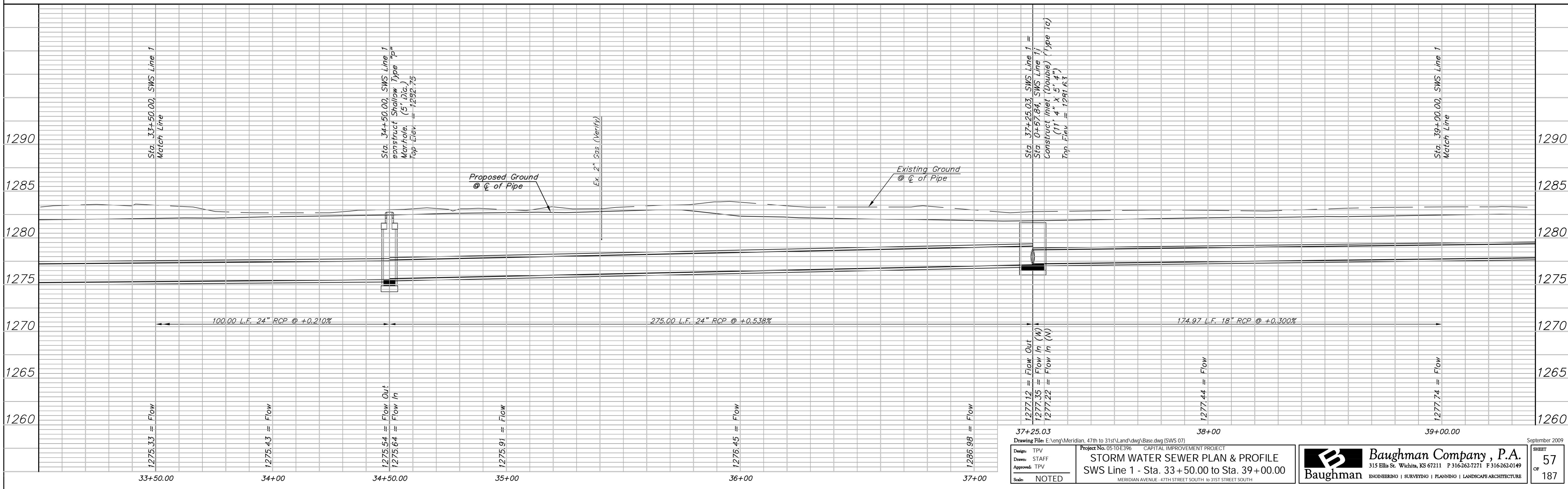
SCALE:  
 HORIZONTAL: 1" = 20'  
 VERTICAL: 1" = 5'



**D - 193 - 1 UP**  
 Sta. 34+50.00, SWS Line 1 = B.L. Sta. 138+74.97, 35.17' Rt. Construct Shallow Type "P" Manhole. (5' Dia.) Top Elev. = 1282.75

**CAUTION!**  
 Existing 2" Gas Crossing

Sta. 37+25.03, SWS Line 1 = Sta. 0+67.84, SWS Line 1j = B.L. Sta. 141+50.00, 34.17' Rt. Construct Inlet (Double) (Type 1a) (11' 4" X 5' 4") Top Elev. = 1281.63



<b>37+25.03</b> Drawing File: E:\eng\Meridian_47th to 31st\Land\dwg\Base.dwg (SWS 07) Project No. 0510E396 CAPITAL IMPROVEMENT PROJECT <b>STORM WATER SEWER PLAN &amp; PROFILE</b> SWS Line 1 - Sta. 33+50.00 to Sta. 39+00.00 MERIDIAN AVENUE - 47TH STREET SOUTH TO 31ST STREET SOUTH		 <b>Baughman Company, P.A.</b> 315 Ellis St., Wichita, KS 67211 P 316-262-7171 F 316-262-0149 ENGINEERING   SURVEYING   PLANNING   LANDSCAPE ARCHITECTURE	SHEET <b>57</b> OF <b>187</b>
Design: TPV Drawn: STAFF Approved: TPV Scale: NOTED			