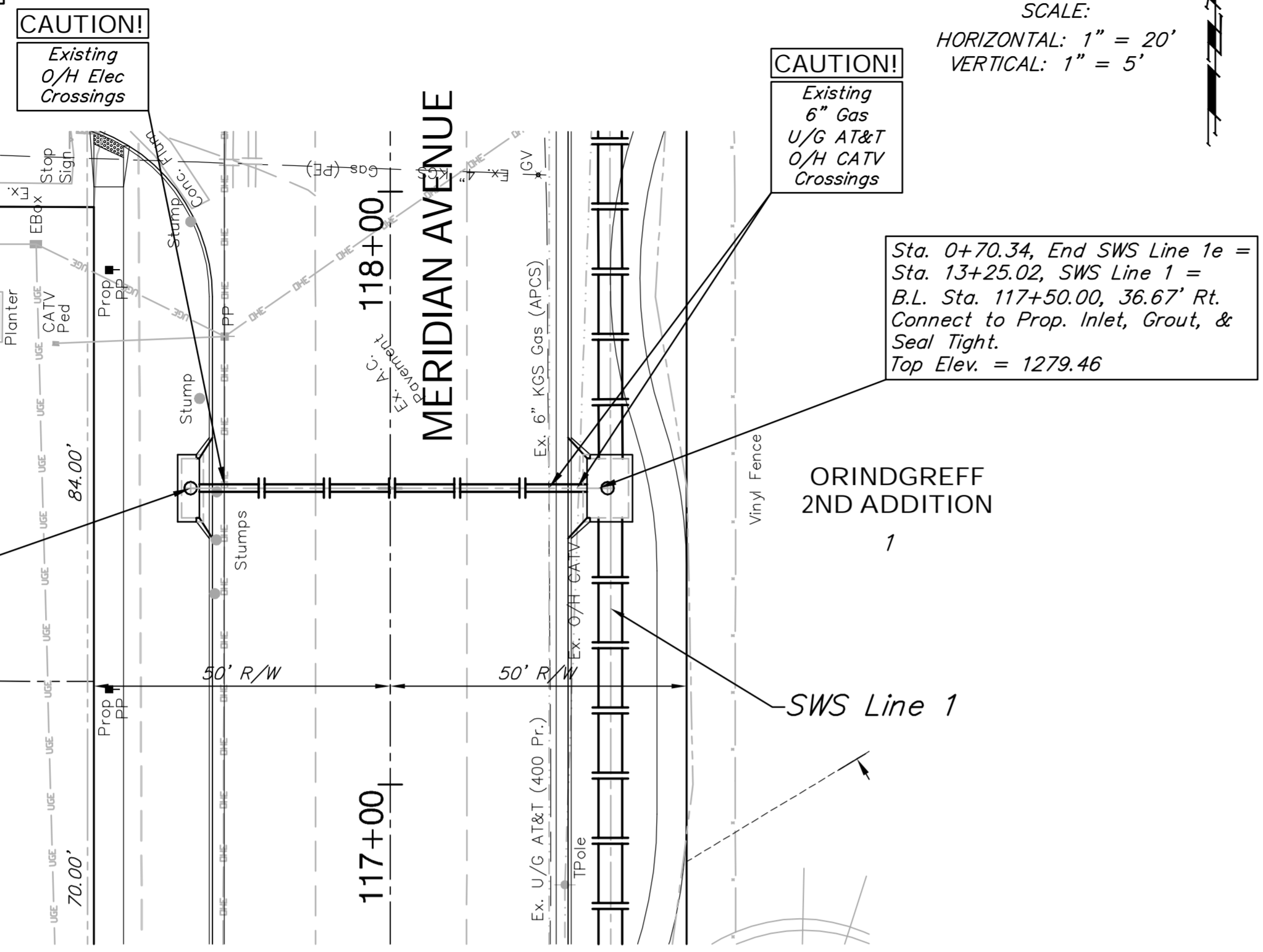


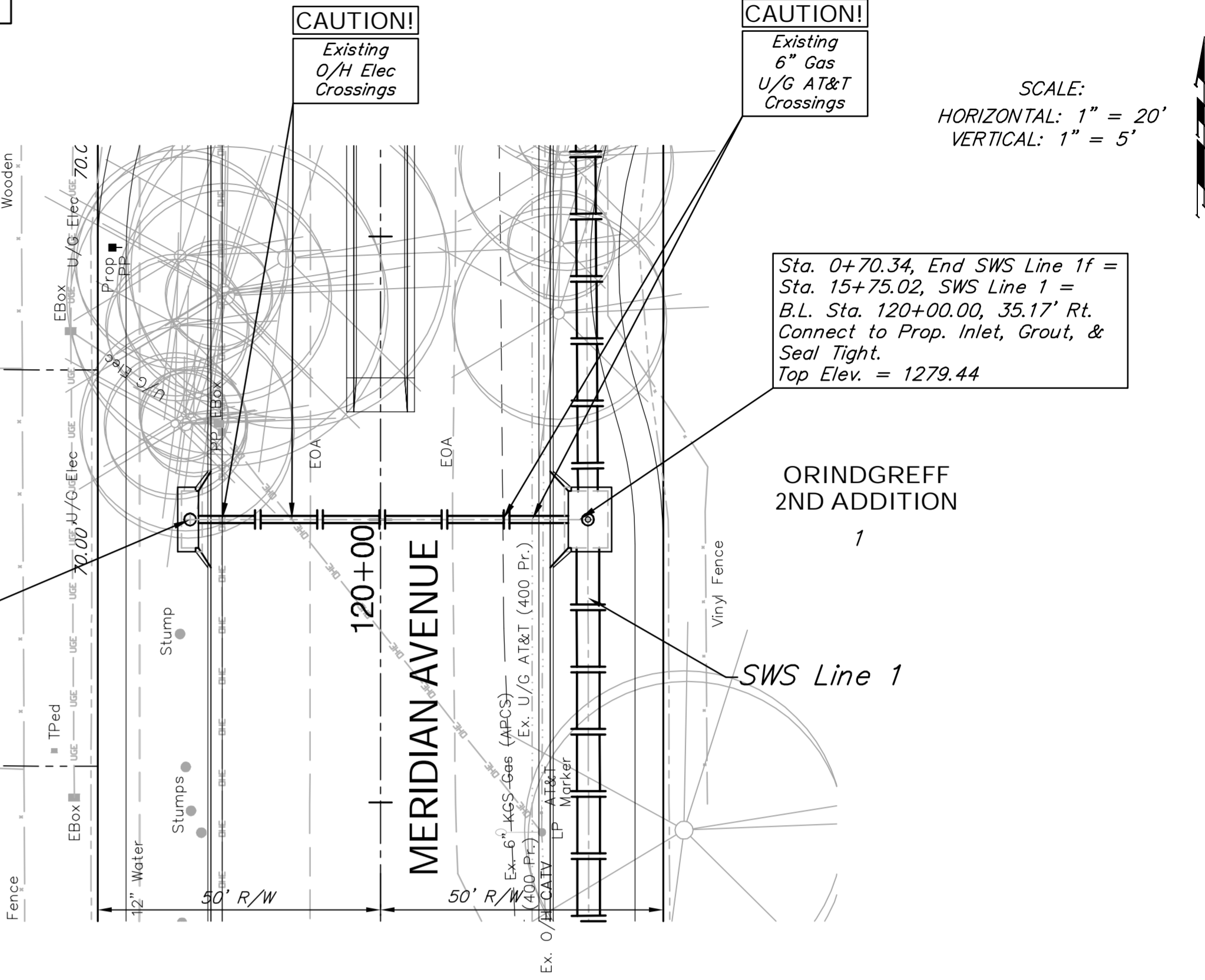
BENCHMARK:
 BM #4 - "C" Chiseled in the Back of Curb in the South Curb
 Line of 44th Street South
 Sta. 118+12, 80' Lt.
 Elev. = 1280.96 MSL



Sta. 0+00.00, Begin SWS Line 1e =
 B.L. Sta. 117+50.00, 33.67' Lt.
 Construct Inlet (Double) (Type 1a)
 (11' 4" X 4' 4")
 Top Elev. = 1279.46

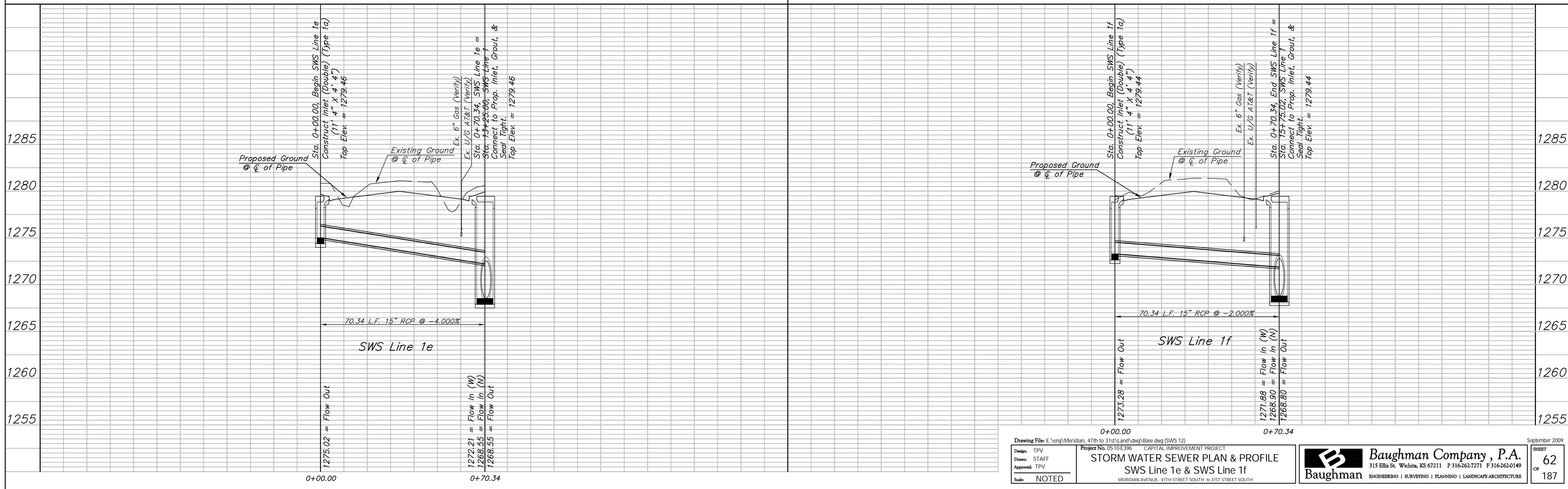
Sta. 0+70.34, End SWS Line 1e =
 Sta. 13+25.02, SWS Line 1 =
 B.L. Sta. 117+50.00, 36.67' Rt.
 Connect to Prop. Inlet, Grout, &
 Seal Tight.
 Top Elev. = 1279.46

BENCHMARK:
 BM #4 - "C" Chiseled in the Back of Curb in the South Curb
 Line of 44th Street South
 Sta. 118+12, 80' Lt.
 Elev. = 1280.96 MSL



Sta. 0+00.00, Begin SWS Line 1f =
 B.L. Sta. 120+00.00, 33.67' Lt.
 Construct Inlet (Double) (Type 1a)
 (11' 4" X 4' 4")
 Top Elev. = 1279.44

Sta. 0+70.34, End SWS Line 1f =
 Sta. 15+75.02, SWS Line 1 =
 B.L. Sta. 120+00.00, 35.17' Rt.
 Connect to Prop. Inlet, Grout, &
 Seal Tight.
 Top Elev. = 1279.44



Drawing File: E:\eng\Meridian_47th to 31st\Land\dwg\Base.dwg (SWS 12)
 Project No. 0510E396 CAPITAL IMPROVEMENT PROJECT
STORM WATER SEWER PLAN & PROFILE
 SWS Line 1e & SWS Line 1f
 MERIDIAN AVENUE - 47TH STREET SOUTH TO 31ST STREET SOUTH

Design: TPV
 Drawn: STAFF
 Approved: TPV
 Scale: NOTED

September 2009
 SHEET 62 OF 187

Baughman Company, P.A.
 315 Ellis St., Wichita, KS 67211 P 316-262-7171 F 316-262-0149
 Baughman ENGINEERING | SURVEYING | PLANNING | LANDSCAPE ARCHITECTURE